



25 MASSACHUSETTS AVE
WASHINGTON, DC 20001

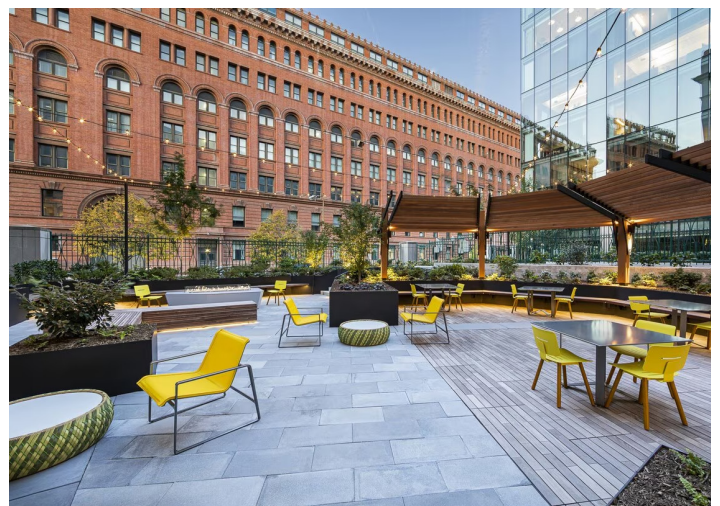
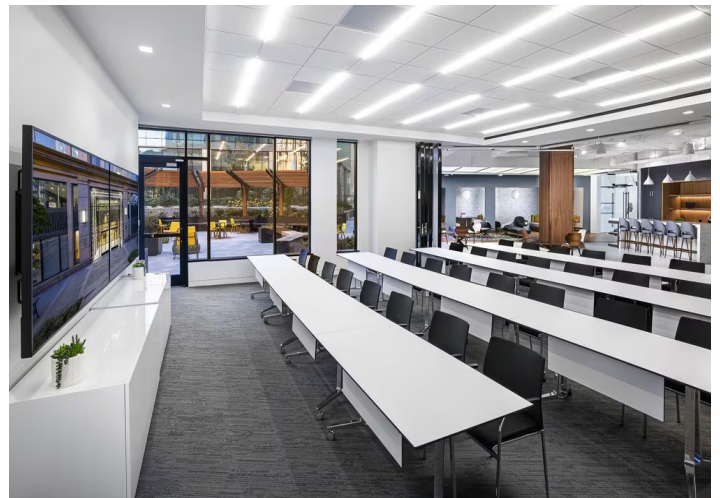
FOR SUBLEASE

Private street level entrance off Massachusetts Avenue



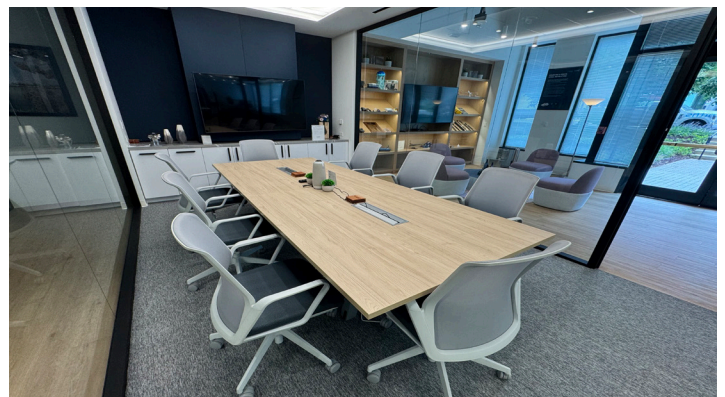
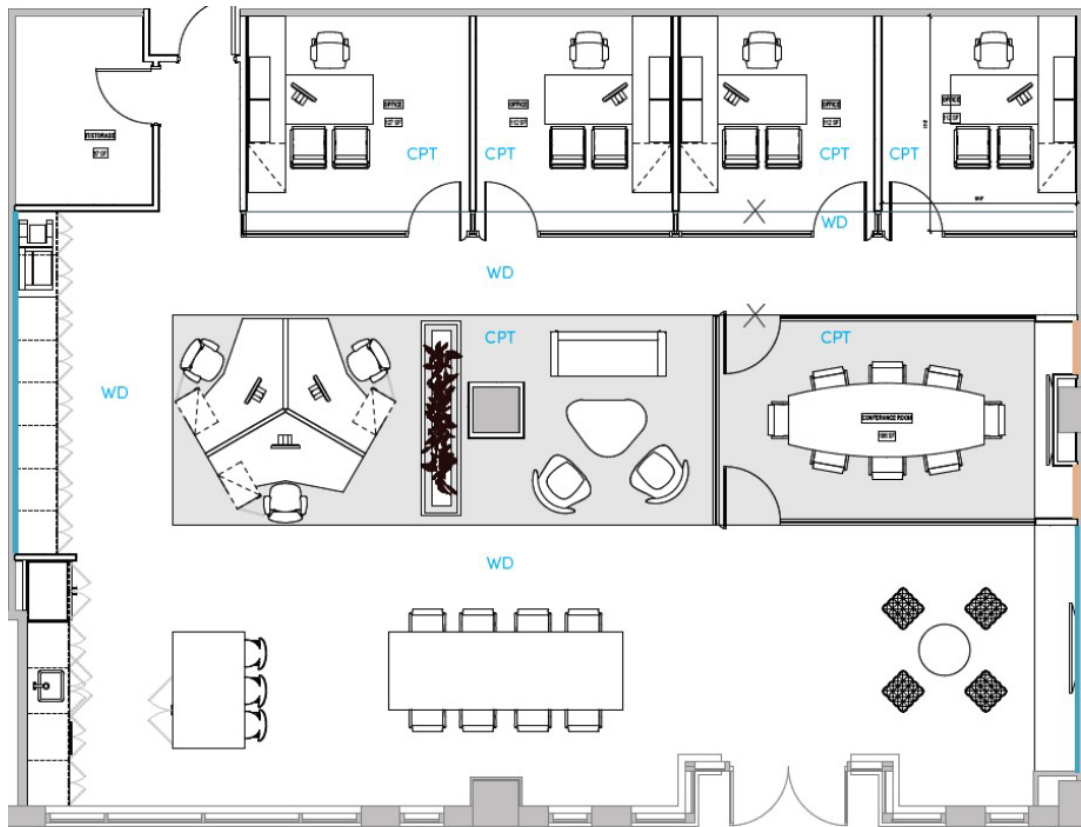
Sublease Highlights

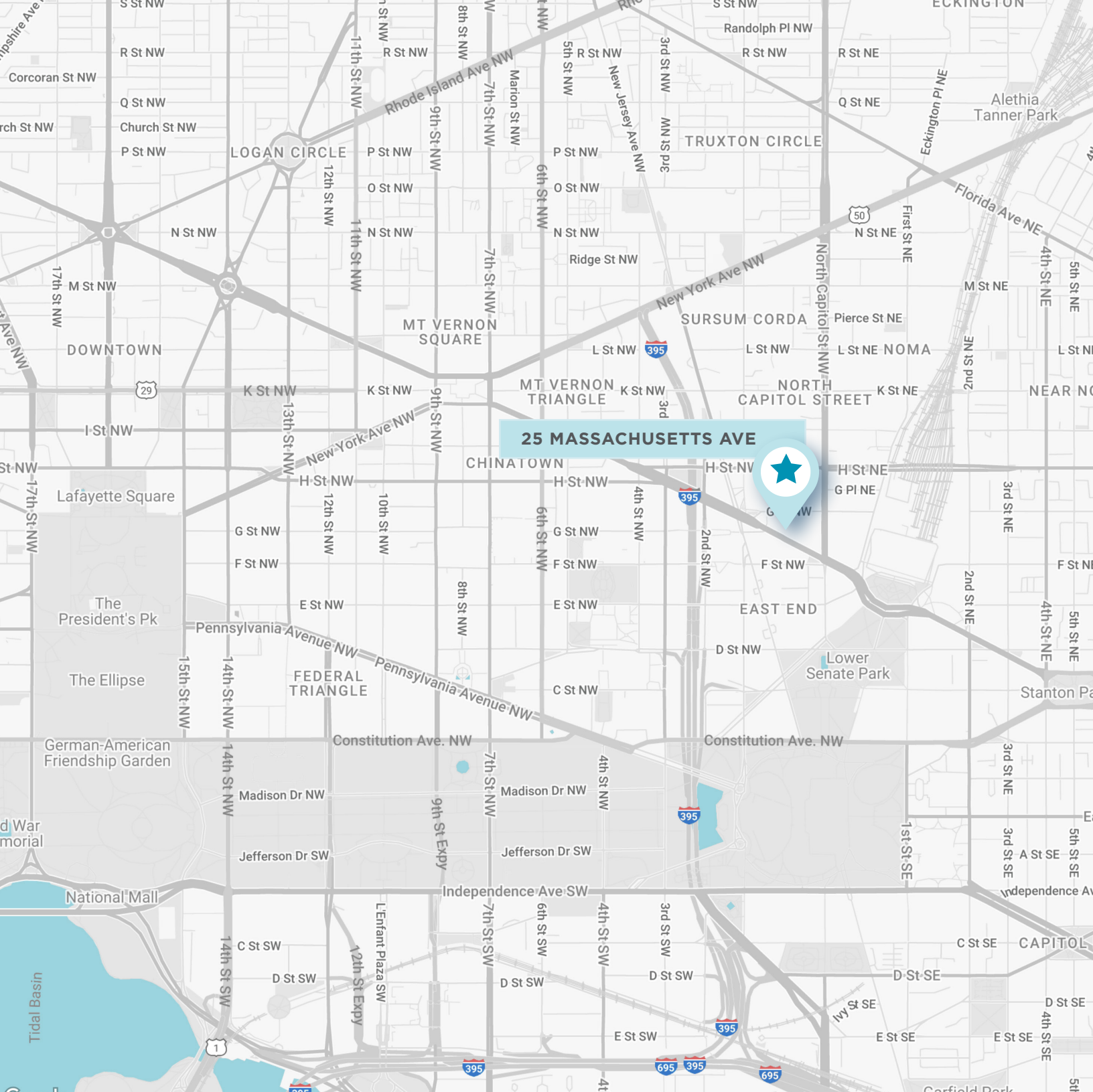
- Term: Through February 2028 or 2030
- Available for immediate occupancy
- Asking \$43.00/SF
- Plug n' Play
- Modern Build-Out
- 4 private offices
- Conference room for 8
- 3 existing workstations/space for more



FOR SUBLEASE

2,725 RSF





CONTACT INFORMATION

GEORGE MEN

Director

+1 202 407 8165

george.men@cushwake.com

2101 L Street, N.W.

Suite 500

Washington, DC 20037

cushmanwakefield.com



©2025 Cushman & Wakefield. All rights reserved. The information contained in this communication is strictly confidential. This information has been obtained from sources believed to be reliable but has not been verified. NO WARRANTY OR REPRESENTATION, EXPRESS OR IMPLIED, IS MADE AS TO THE CONDITION OF THE PROPERTY (OR PROPERTIES) REFERENCED HEREIN OR AS TO THE ACCURACY OR COMPLETENESS OF THE INFORMATION CONTAINED HEREIN, AND SAME IS SUBMITTED SUBJECT TO ERRORS, OMISSIONS, CHANGE OF PRICE, RENTAL OR OTHER CONDITIONS, WITHDRAWAL WITHOUT NOTICE, AND TO ANY SPECIAL LISTING CONDITIONS IMPOSED BY THE PROPERTY OWNER(S). ANY PROJECTIONS, OPINIONS OR ESTIMATES ARE SUBJECT TO UNCERTAINTY AND DO NOT SIGNIFY CURRENT OR FUTURE PROPERTY PERFORMANCE.