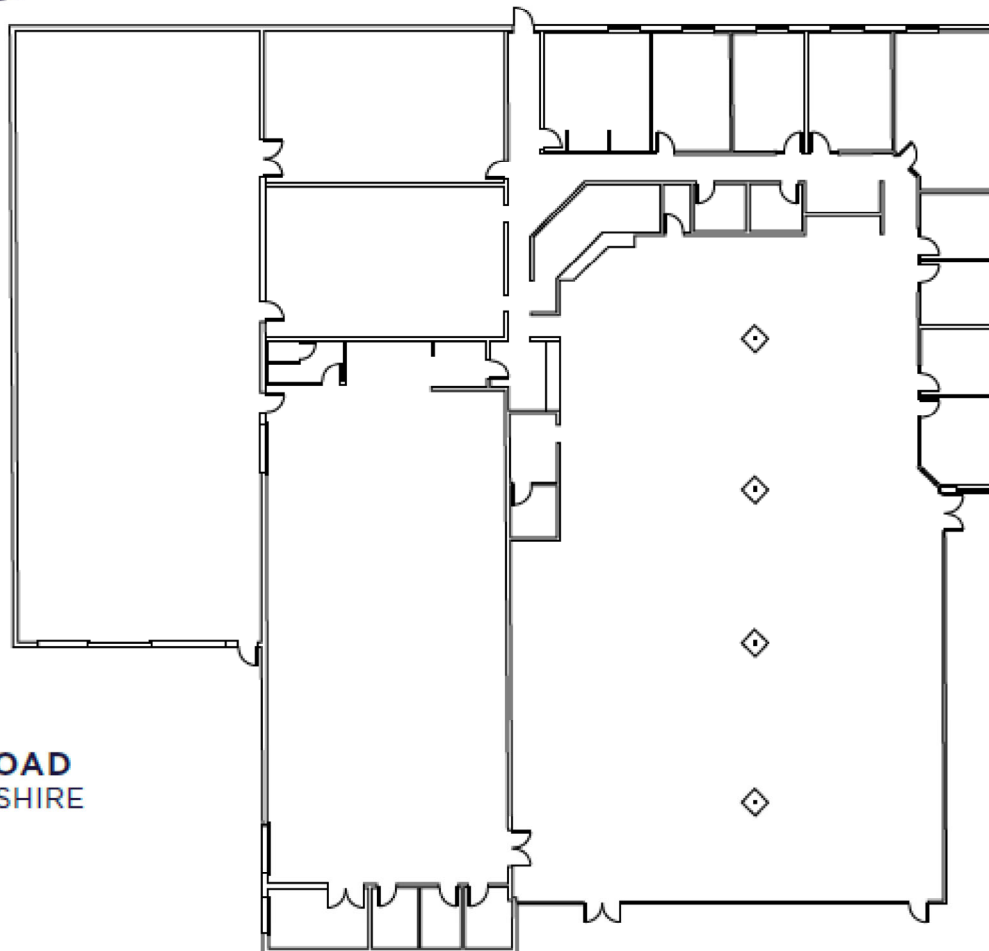




**CUSHMAN &  
WAKEFIELD**



**257 SHEEP DAVIS ROAD**  
CONCORD, NEW HAMPSHIRE  
±20,400 SF  
FLOOR PLAN

**THOMAS FARRELLY, SIOR**  
Executive Managing Director  
+1 603 628 2808  
thomas.farrelly@cushwake.com

**DENIS C.J. DANCOES II**  
Executive Director  
+1 312 470 2358  
denis.dancoes@cushwake.com

**SUE ANN JOHNSON**  
Managing Director  
+1 603 490 6900  
sueann.johnson@cushwake.com

Cushman & Wakefield of New Hampshire, Inc.  
900 Elm Street, Suite 1301  
Manchester, NH 03101  
+1 603 628 2800

The information contained in this communication is strictly confidential. NO WARRANTY OR REPRESENTATION, EXPRESS OR IMPLIED, IS MADE AS TO THE CONDITION OF THE PROPERTY (OR PROPERTIES) REFERENCED HEREIN OR AS TO THE ACCURACY OR COMPLETENESS OF THE INFORMATION CONTAINED HEREIN, AND SAME IS SUBMITTED SUBJECT TO ERRORS, OMISSIONS, CHANGE OF PRICE, RENTAL OR OTHER CONDITIONS, WITHDRAWAL WITHOUT NOTICE, AND TO ANY SPECIAL LISTING CONDITIONS IMPOSED BY THE PROPERTY OWNER(S). ANY PROJECTIONS, OPINIONS OR ESTIMATES ARE SUBJECT TO UNCERTAINTY AND DO NOT SIGNIFY CURRENT OR FUTURE PROPERTY PERFORMANCE.

**cushmanwakefield.com**