







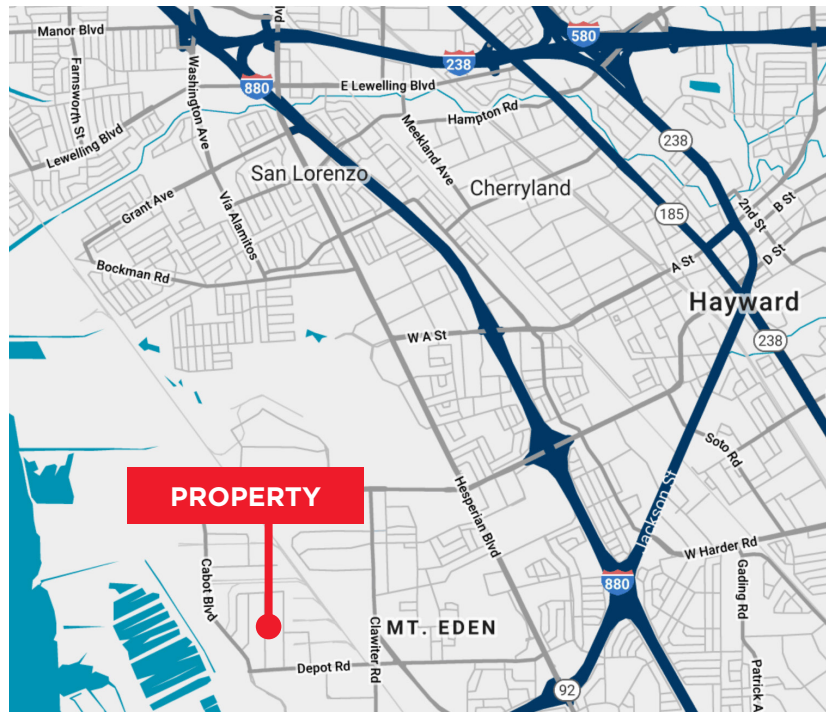
FOR SUBLEASE



## 23520 FOLEY STREET, HAYWARD

### PROPERTY FEATURES

-  ± 6,105 Square Feet  
(Can be Divided in half)
-  Two (2) Grade Level Doors
-  ± 18' Clear Height
-  Lease Expiration: May 31, 2027
-  Available Now
-  Contact Brokers for Pricing



#### MATT YOKLAVICH

Associate

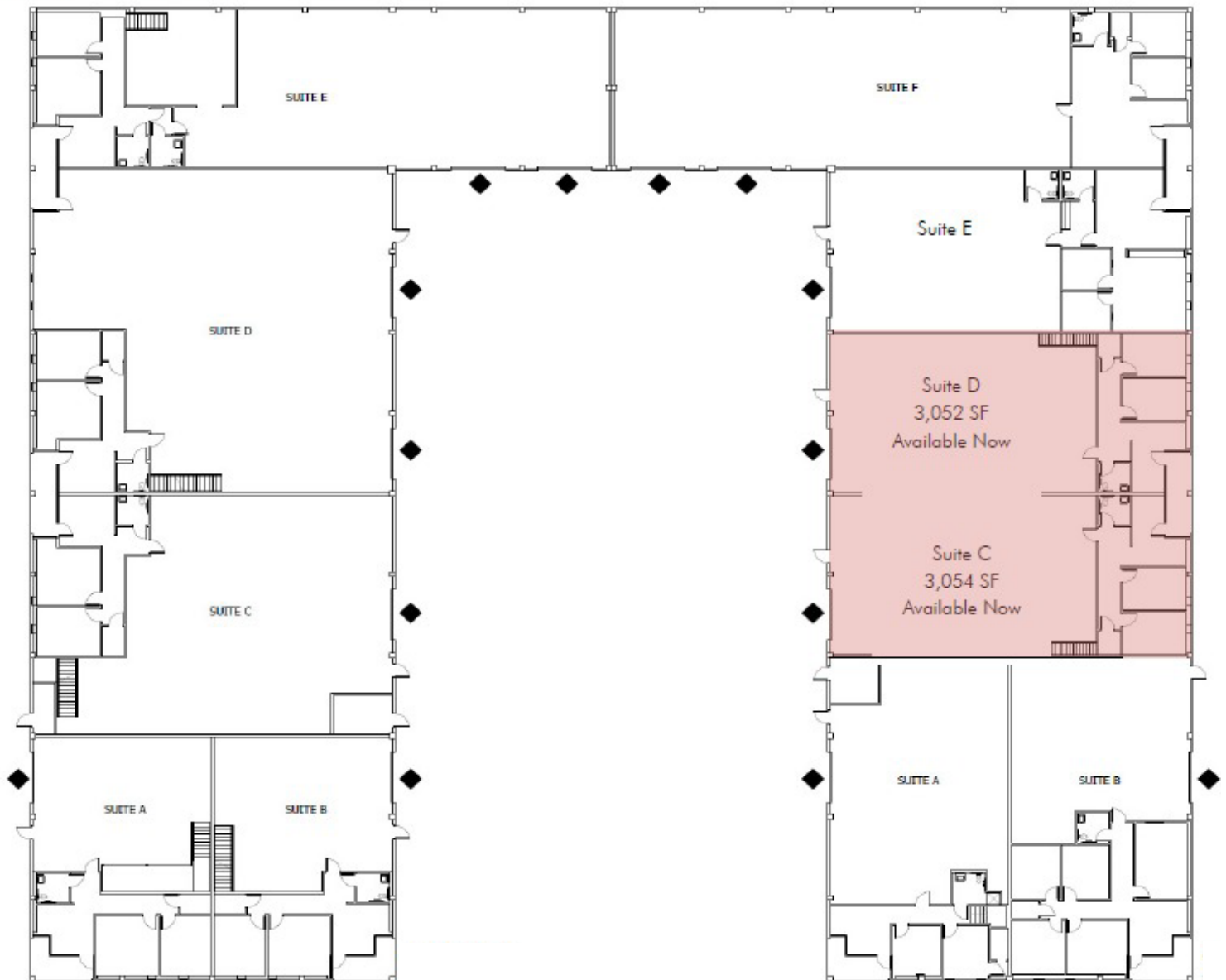
510.267.6030

matt.yoklavich@cushwake.com

LIC #02202140



FOR SUBLEASE



**MATT YOKLAVICH**

Associate

510.267.6030

[matt.yoklavich@cushwake.com](mailto:matt.yoklavich@cushwake.com)

LIC #02202140

