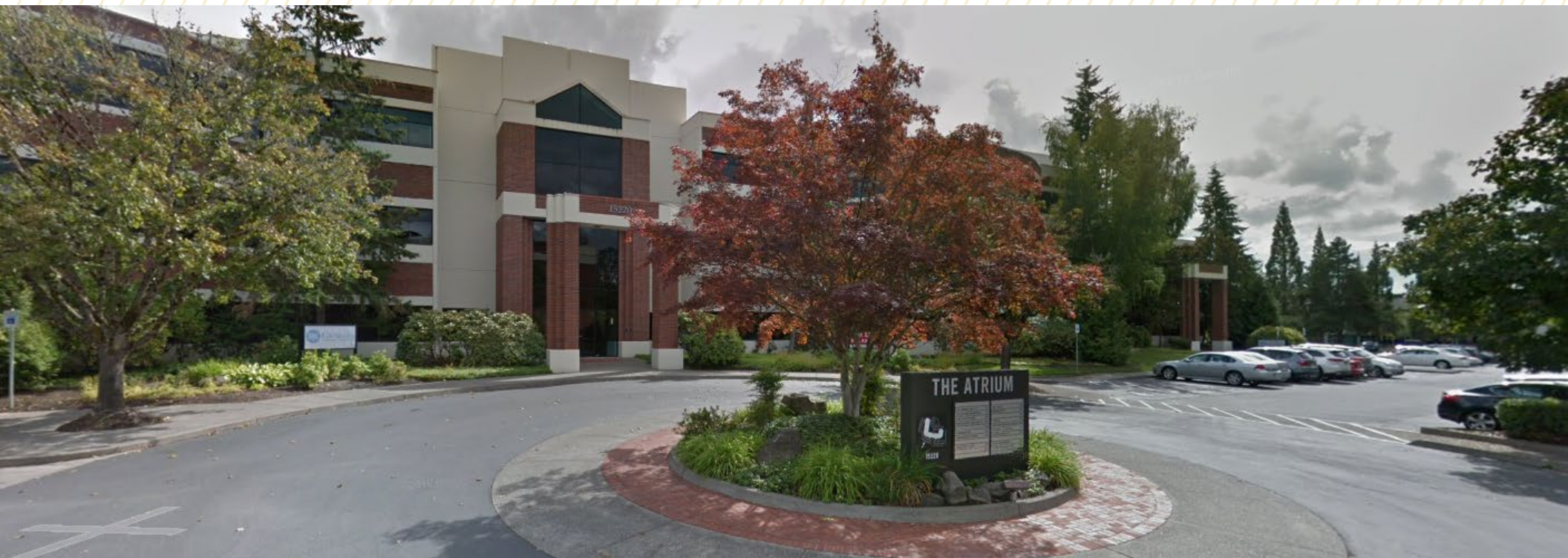


FOR SUBLEASE  
**19,266 SF**



# CORNELL OAKS CORPORATE CENTER

**15220 NW GREENBRIER PARKWAY, BEAVERTON OR**



**FOR SUBLEASE** | 15220 NW Greenbrier Parkway, Suite 150

# PROPERTY HIGHLIGHTS

**Cornell Oaks Corporate Center** is a 12-building, Class A, master-planned campus featuring a blend of flex and office buildings. The park-like setting features walking and biking paths, on-site property management, coffee bar and lounge, fitness center with showers and lockers, and common area wifi.

## Plug & Play – Furniture Available!

Suite 150 features immediate lobby-level access, reception, employee lounge, large open floorplan with private offices, phone rooms, lab space, and additional storage and work rooms. Beautiful greenspace views from the floor-to-ceiling windows in rear of office with direct access to outdoor picnic tables and walking paths.

---

Space Available: 19,266 SF

---

Private Offices: 9

---

Conference Rooms: 4

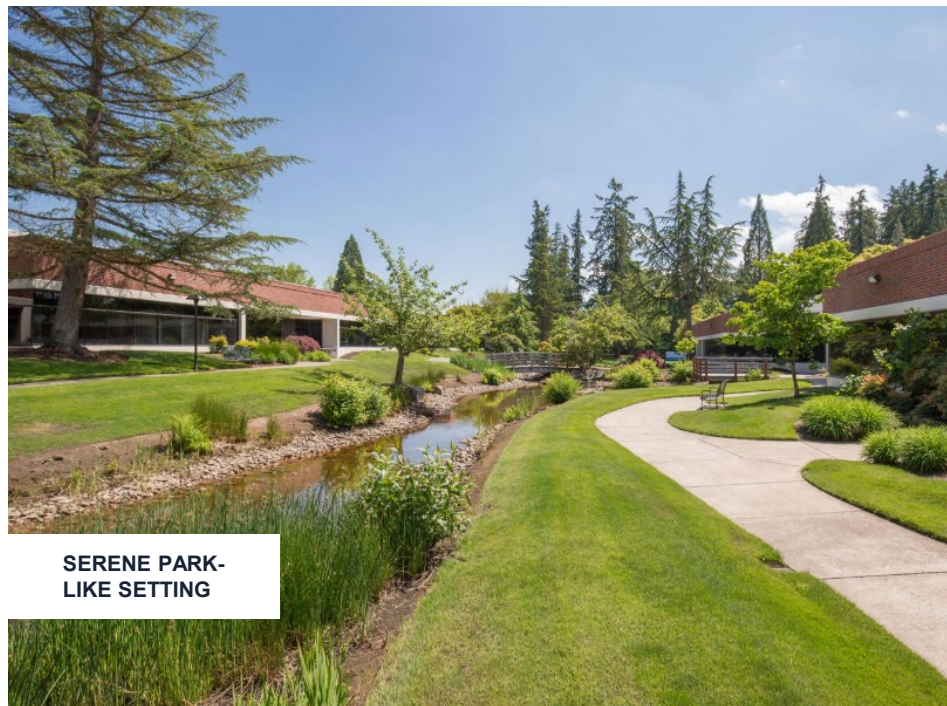
---

Lease Rate: Call For Rates

---

Lease Expire: 4/15/2029

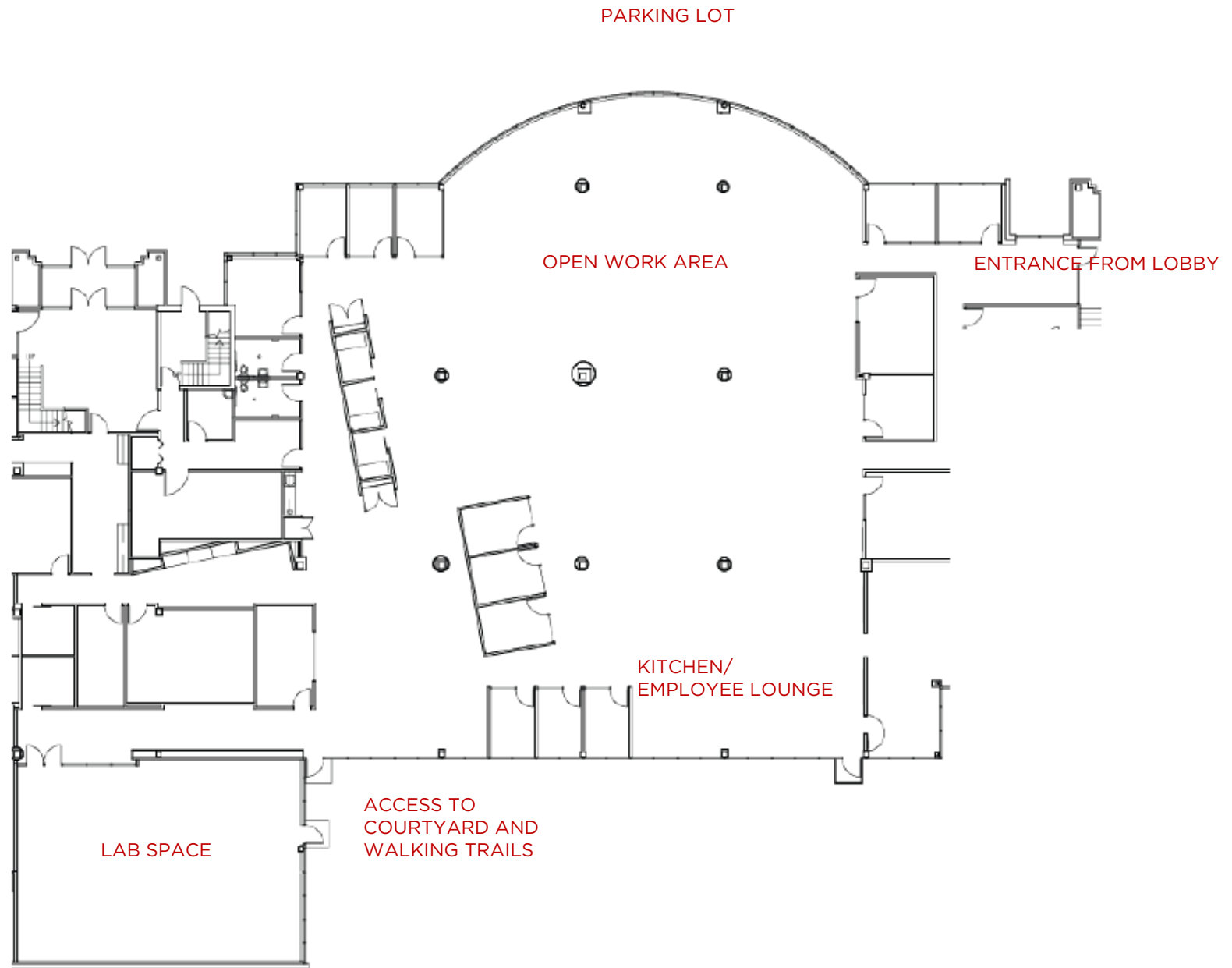
---



**SERENE PARK-  
LIKE SETTING**



**GROUND FLOOR  
LOBBY ACCESS**



Suite 150  
**19,266 SF**



FOR SUBLEASE | 15220 NW Greenbrier Parkway, Suite 150





# A DRIVING WORKFORCE

Located in the Sunset Corridor area of Beaverton, Oregon (Silicon Forest) provides strategic benefits, particularly for tech firms. The area offers access to a skilled workforce due to the presence of industry giants like Intel, Nike, and Columbia Sportswear.



## POPULATION

163,637  
*Within 3 Miles*

318,338  
*Within 5 Miles*



## BACHELOR'S DEGREE OR HIGHER

51%  
*Within 3 Miles*

48%  
*Within 5 Miles*



## HOUSEHOLDS

27,086  
*Within 3 Miles*

123,169  
*Within 5 Miles*



## MEDIAN AGE

37.8  
*Within 3 Miles*

38.4  
*Within 5 Miles*





FOR SUBLEASE | 15220 NW Greenbrier Parkway, Suite 150

# CONTACT INFORMATION

**DOUG  
DEURWAARDER**

[doug.deurwaarder@cushwake.com](mailto:doug.deurwaarder@cushwake.com)  
+1 503 317 2176

**CINDY  
LEITNER**

[cindy.leitner@cushwake.com](mailto:cindy.leitner@cushwake.com)  
+1 503 973 9218

**200 SW Market Street  
Suite 200  
Portland OR 97201**



©2020 Cushman & Wakefield. All rights reserved. The information contained in this communication is strictly confidential. This information has been obtained from sources believed to be reliable but has not been verified. NO WARRANTY OR REPRESENTATION, EXPRESS OR IMPLIED, IS MADE AS TO THE CONDITION OF THE PROPERTY (OR PROPERTIES) REFERENCED HEREIN OR AS TO THE ACCURACY OR COMPLETENESS OF THE INFORMATION CONTAINED HEREIN, AND SAME IS SUBMITTED SUBJECT TO ERRORS, OMISSIONS, CHANGE OF PRICE, RENTAL OR OTHER CONDITIONS, WITHDRAWAL WITHOUT NOTICE, AND TO ANY SPECIAL LISTING CONDITIONS IMPOSED BY THE PROPERTY OWNER(S). ANY PROJECTIONS, OPINIONS OR ESTIMATES ARE SUBJECT TO UNCERTAINTY AND DO NOT SIGNIFY CURRENT OR FUTURE PROPERTY PERFORMANCE.