



AVAILABLE FOR LEASE

9700 18TH ST. N

ST. PETERSBURG, FL 33716



**CUSHMAN &
WAKEFIELD**

GID
INDUSTRIAL

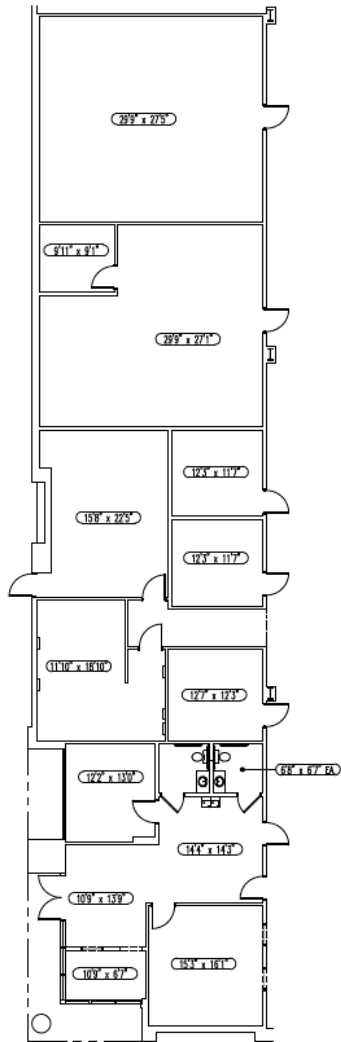


Property Highlights

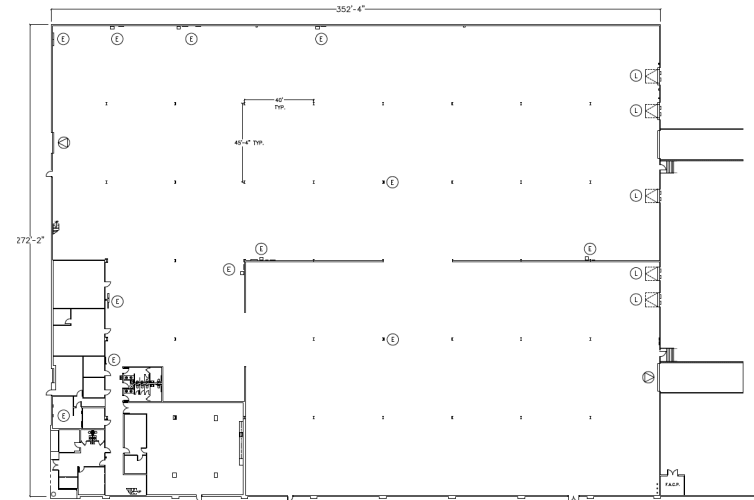
- **96,102 SF Total**
 - 88,089 SF in Warehouse
 - 8,013 SF in Office/Breakroom
- **Loading:**
 - Five (5) 10' x 10' Dock High Doors
 - Two (2) 15' x 15' Oversized Ramps
 - One (1) Grade Level Door (SW Corner, Front of Building)
- **Air-Conditioning:** 100%
- **Power:** 2,400 amp, 3 phase 277/480 V
- **Column Spacing:** 40' x 45.4'
- **Construction Type:** Tilt-Wall
- **Clear Height:** 28'
- **Sprinkler System:** ESFR
- **Dedicated Parking Ratio:** 2.64/1000 SF
- **Other:**
 - Off-Dock Trailer Storage Available
 - Mezzanine Storage Above Office (Not included in RSF)
- **Available:** July 1, 2025

Floor Plans

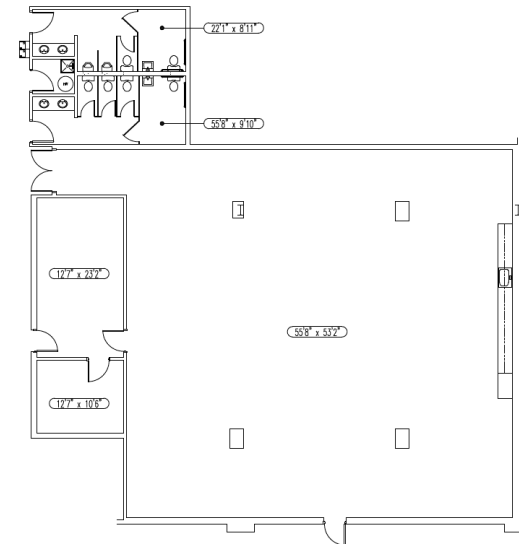
Office



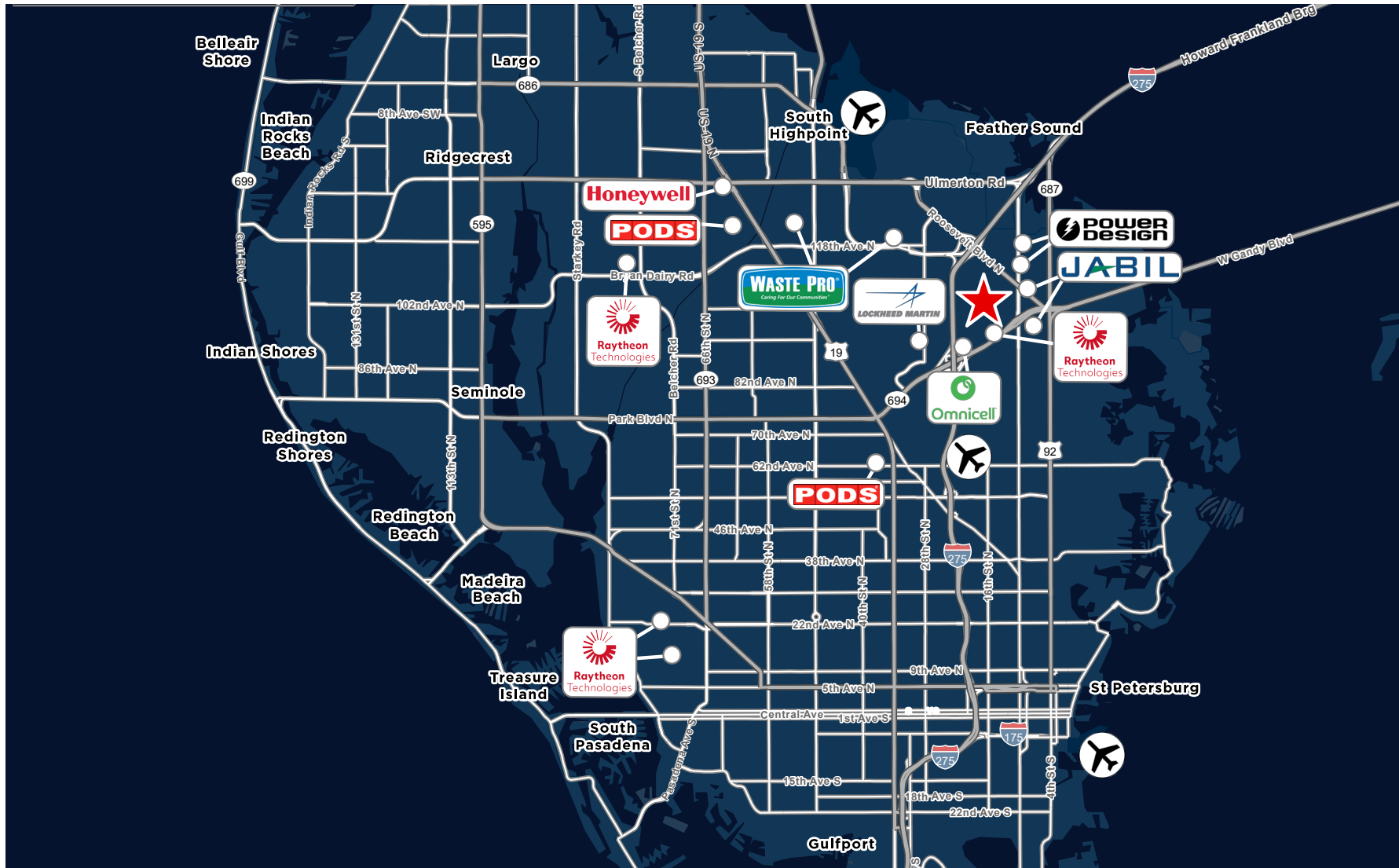
Building



Break Room / Lounge



THE LOCATION





CONTACT

JOHN JACKSON, CCIM, SIOR

Executive Director

+1 727 643 7316

john.jackson@cushwake.com

JT FAIRCLOTH, SIOR

Director

+1 813 833 3242

jt.faircloth@cushwake.com

CASEY PERRY

Senior Associate

+1 813 233 6564

casey.g.perry@cushwake.com

201 North Franklin Street
One Tampa City Center
Tampa, Florida 33602-5163



©2025 Cushman & Wakefield. All rights reserved. The information contained in this communication is strictly confidential. This information has been obtained from sources believed to be reliable but has not been verified. NO WARRANTY OR REPRESENTATION, EXPRESS OR IMPLIED, IS MADE AS TO THE CONDITION OF THE PROPERTY (OR PROPERTIES) REFERENCED HEREIN OR AS TO THE ACCURACY OR COMPLETENESS OF THE INFORMATION CONTAINED HEREIN, AND SAME IS SUBMITTED SUBJECT TO ERRORS, OMISSIONS, CHANGE OF PRICE, RENTAL OR OTHER CONDITIONS, WITHDRAWAL WITHOUT NOTICE, AND TO ANY SPECIAL LISTING CONDITIONS IMPOSED BY THE PROPERTY OWNER(S). ANY PROJECTIONS, OPINIONS OR ESTIMATES ARE SUBJECT TO UNCERTAINTY AND DO NOT SIGNIFY CURRENT OR FUTURE PROPERTY PERFORMANCE.