



±34,000 SF to ±100,500 SF
Delivered & Move In Ready



1120 WOODS CHAPEL ROAD | DUNCAN, SC

ELLIOTT FAYSSOUX, SIOR
Senior Director
+1 864 370 8190
elliott.fayssoux@cushwake.com

KACIE JACKSON, SIOR
Senior Director
+1 864 370 8193
kacie.jackson@cushwake.com





**±34,000 SF to ±100,500 SF
Delivered & Move In Ready**



GENERAL

- ±34,000 SF to ±100,500 SF
- ±1,500 SF of Spec Office
- Dimensions are 310' x 325'
- Column Spacing is 54' x 50'
- 60' Speed Bay
- 25 FC LED Lighting to be installed
- Path and Wireway Installed for EV Chargers
- Potential for 44 Trailer Spots
- +/- 80 Auto Parks
- 1 Drive In
- 15 Dock Doors
- 155' Truck Court

FIRE PROTECTION

- ESFR Sprinkler System

ELECTRICAL

- 2000Kva Transformer

ROOFING

- 60 Mil TPO membrane

FLOOR

- 6" Reinforced Floor
- 10 mil Poly Vapor Barrier

ELLIOTT FAYSSOUX, SIOR
Senior Director
+1 864 370 8190
elliott.fayssoux@cushwake.com

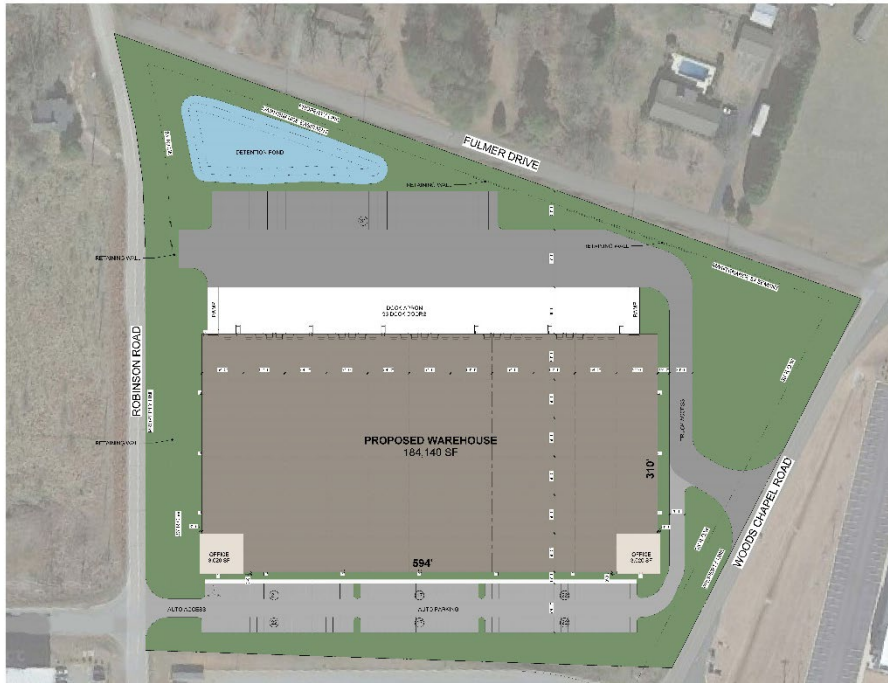
KACIE JACKSON, SIOR
Senior Director
+1 864 370 8193
kacie.jackson@cushwake.com



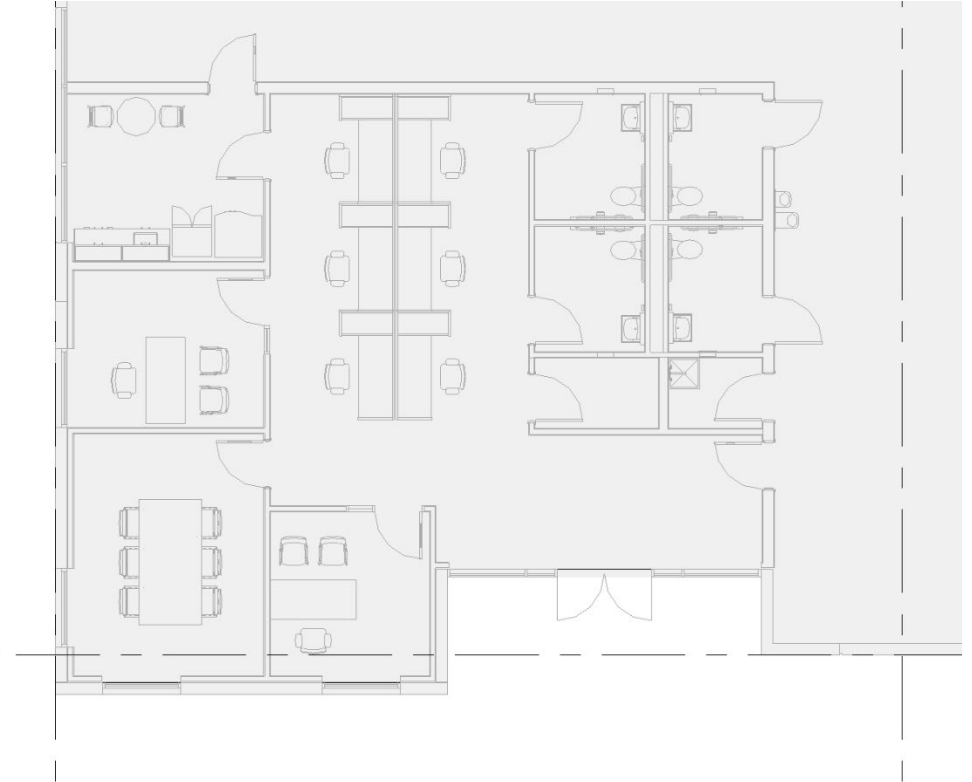


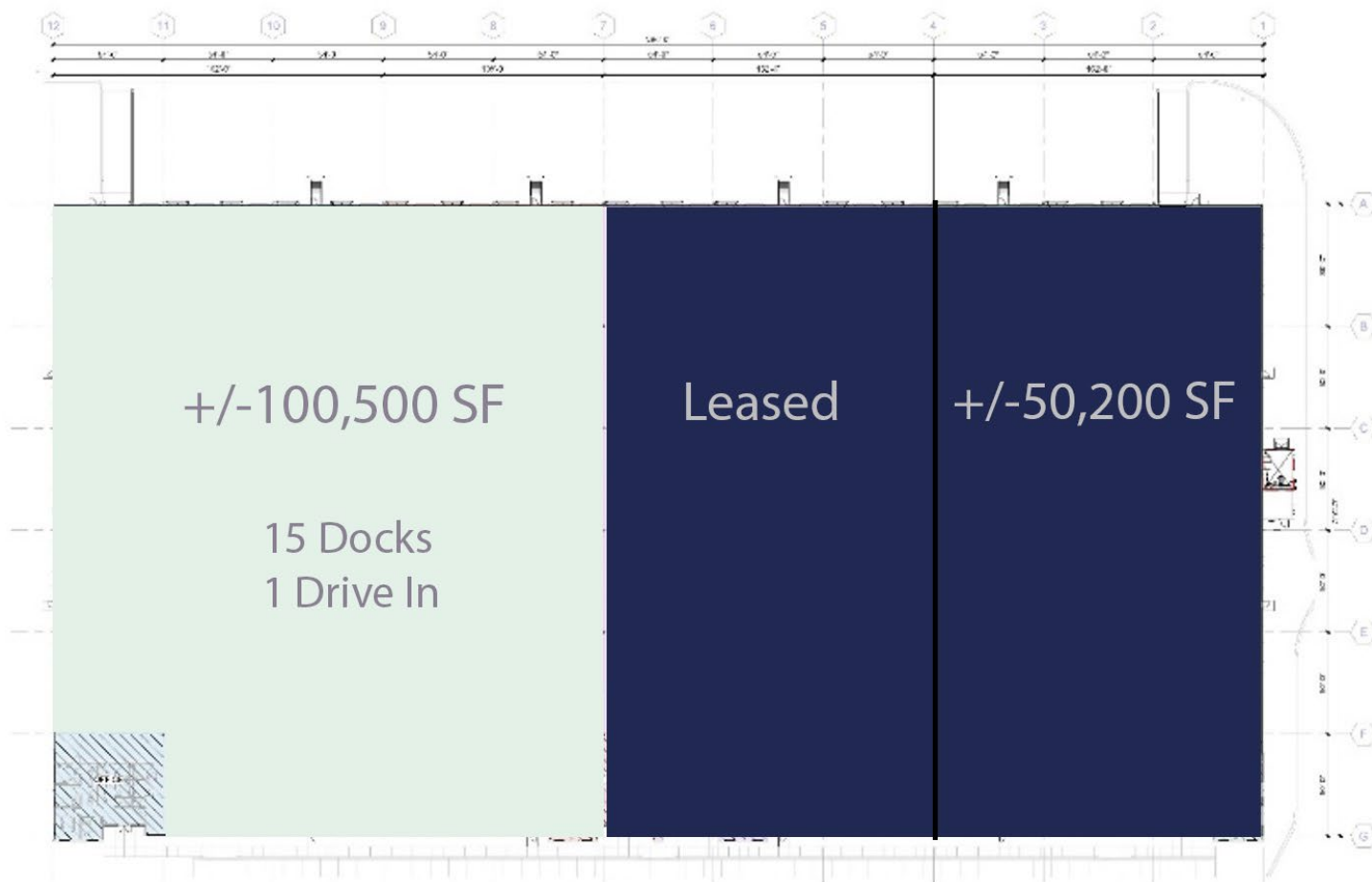
**±34,000 SF to ±100,500 SF
Delivered & Move In Ready**

SITE PLAN



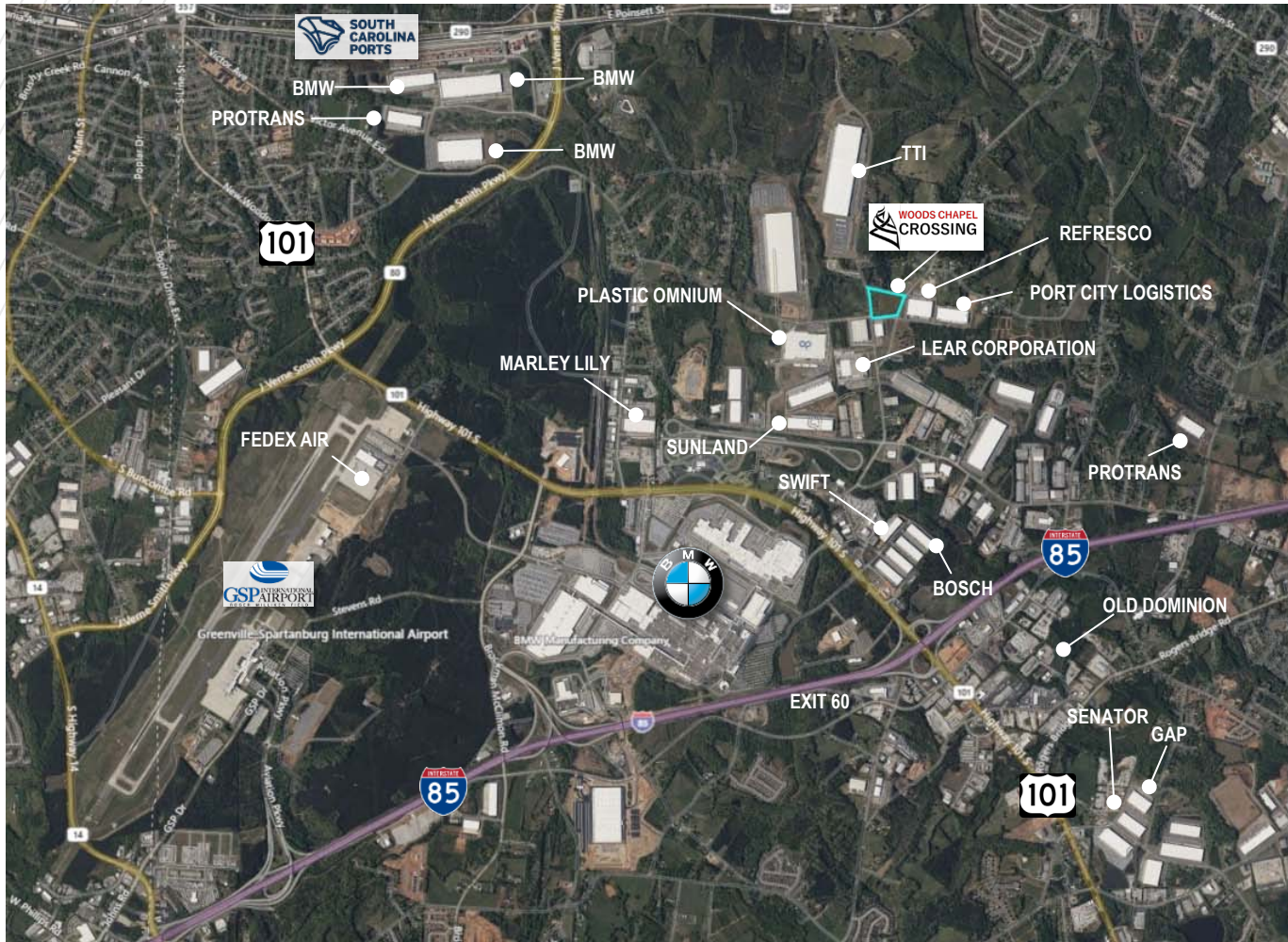
OFFICE LAYOUT ±1,536 SF





WOODS CHAPEL CROSSING

±34,000 SF to ±100,500 SF
DELIVERING JULY 2024



1 Mile



4.6 Miles



Greer Inland Port
3 Miles



1.5 Miles



11.4 Miles



0.7 Miles

ELLIOTT FAYSSOUX, SIOR
Senior Director
+1 864 370 8190
elliott.fayssoux@cushwake.com

KACIE JACKSON, SIOR
Senior Director
+1 864 370 8193
kacie.jackson@cushwake.com

