



1770 CALLIS ROAD
LEBANON, TENNESSEE 37090

**FOR
LEASE**

16,150 - 99,969 SF

NEW CLASS A PARK



Conceptual Renderings



1770 CALLIS ROAD
LEBANON, TENNESSEE 37090



BUILDINGS CAN BE SUBDIVIDED



4 BUILDING
CAMPUS



TILT UP
CONSTRUCTION



GAS
HEAT



ESFR
SPRINKLER



LED
LIGHTING



28' - 30'
CLEAR HEIGHT

1770 CALLIS ROAD
LEBANON, TENNESSEE 37090



BUILDING SPECIFICATIONS

	BUILDING A	BUILDING B	BUILDING C	BUILDING D
MIN SF	16,150	16,150	16,150	16,150
MAX SF	99,929	99,969	99,969	74,969
OFFICE SF	2,880 (spec)	2,880 (spec)	2,880 (spec)	2,880 (spec)
CLEAR HEIGHT	28'	28'	30'	30'
DOCKS DOORS	16 Docks with levelers every 3rd door	16 Docks with levelers every 3rd door	16 Docks with levelers every 3rd door	16 Docks with levelers every 3rd door
FUTURE DOCKS	16 Future dock positions	16 Future dock positions	16 Future dock positions	16 Future dock positions
DRIVE-IN DOORS	2 (12'x14') ramped drive-ins	2 (12'x14') ramped drive-ins	2 (12'x14') ramped drive-ins	2 (12'x14') ramped drive-ins
PARKING	60	60	60	45
COLUMN SPACING	52'x53'4" with a 60' speedbay	52'x53'4" with a 60' speedbay	52'x53'4" with a 60' speedbay	52'x53'4" with a 60' speedbay
POWER	1,200 Amps, 480 volt, 3-phase power	1,200 Amps, 480 volt, 3-phase power	1,200 Amps, 480 volt, 3-phase power	1,200 Amps, 480 volt, 3-phase power

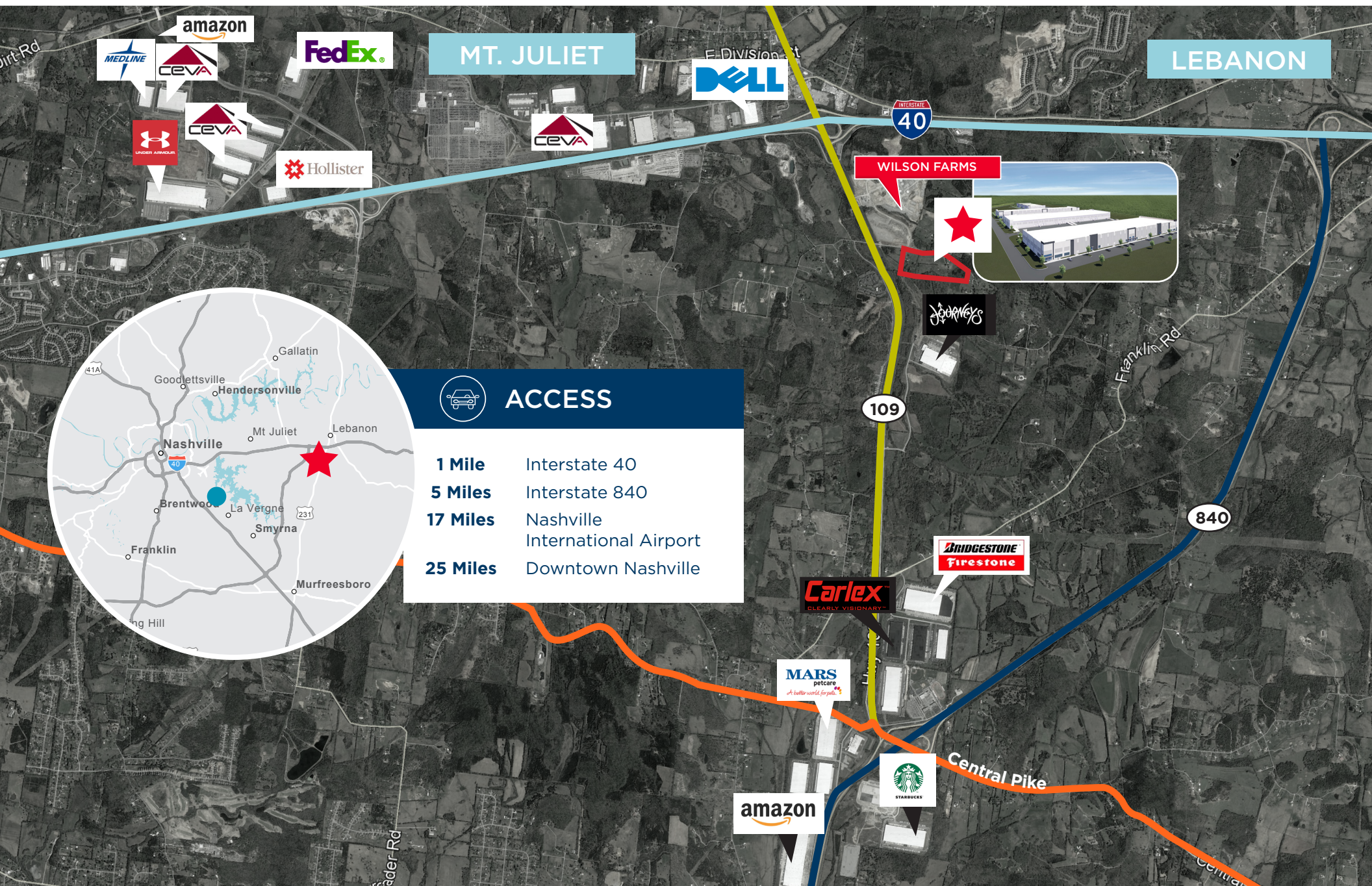
1770 CALLIS ROAD
LEBANON, TENNESSEE 37090



CONSTRUCTION UPDATE



LOCATION/ACCESS



MT. JULIET

LEBANON



ACCESS

1 Mile	Interstate 40
5 Miles	Interstate 840
17 Miles	Nashville International Airport
25 Miles	Downtown Nashville





PARK109

NEW CLASS A INDUSTRIAL

Cushman & Wakefield Copyright March 22, 2022 9:56 AM. No warranty or representation, express or implied, is made to the accuracy or completeness of the information contained herein, and same is submitted subject to errors, omissions, change of price, rental or other conditions, withdrawal without notice, and to any special listing conditions imposed by the property owner(s). As applicable, we make no representation as to the condition of the property (or properties) in question.



ABIGAIL RIECK

+1 615 301 2807

abigail.riek@cushwake.com

JOHN WARD, SIOR

+1 615 301 2834

john.ward@cushwake.com

