

1900 POINT WEST WAY

Sacramento, CA



\$3.00 PER SQUARE FOOT TENANT RELOCATION ALLOWANCE AVAILABLE ON ALL NEW DEALS

*Minimum three year lease term

**Relocation allowance promotion valid through June 30, 2025

OFFICE SPACE FOR LEASE

±429 TO ±10,349

Rentable Square Feet (RSF)

PROPERTY INFORMATION

- Asking Rate: \$1.75 PSF with full service
- Beautiful atrium office setting
- Across the street from Arden Fair Mall
- Excellent proximity to numerous retail & dining amenities
- Great access to Business 80 & Highway 160
- 4.0/1,000 SF parking ratio
- On-site common area conference room

NEW RENOVATIONS

- Suite signage
- Building directories
- Interior and exterior paint
- Common-area lighting
- Suite entry doors
- Interior common-area carpet
- Building monument signage

Move-in-Ready Spec Suites Available



First Floor

SUITE RENTABLE SQUARE FEET

**148 ±803

**150 ±468

***160 ±485

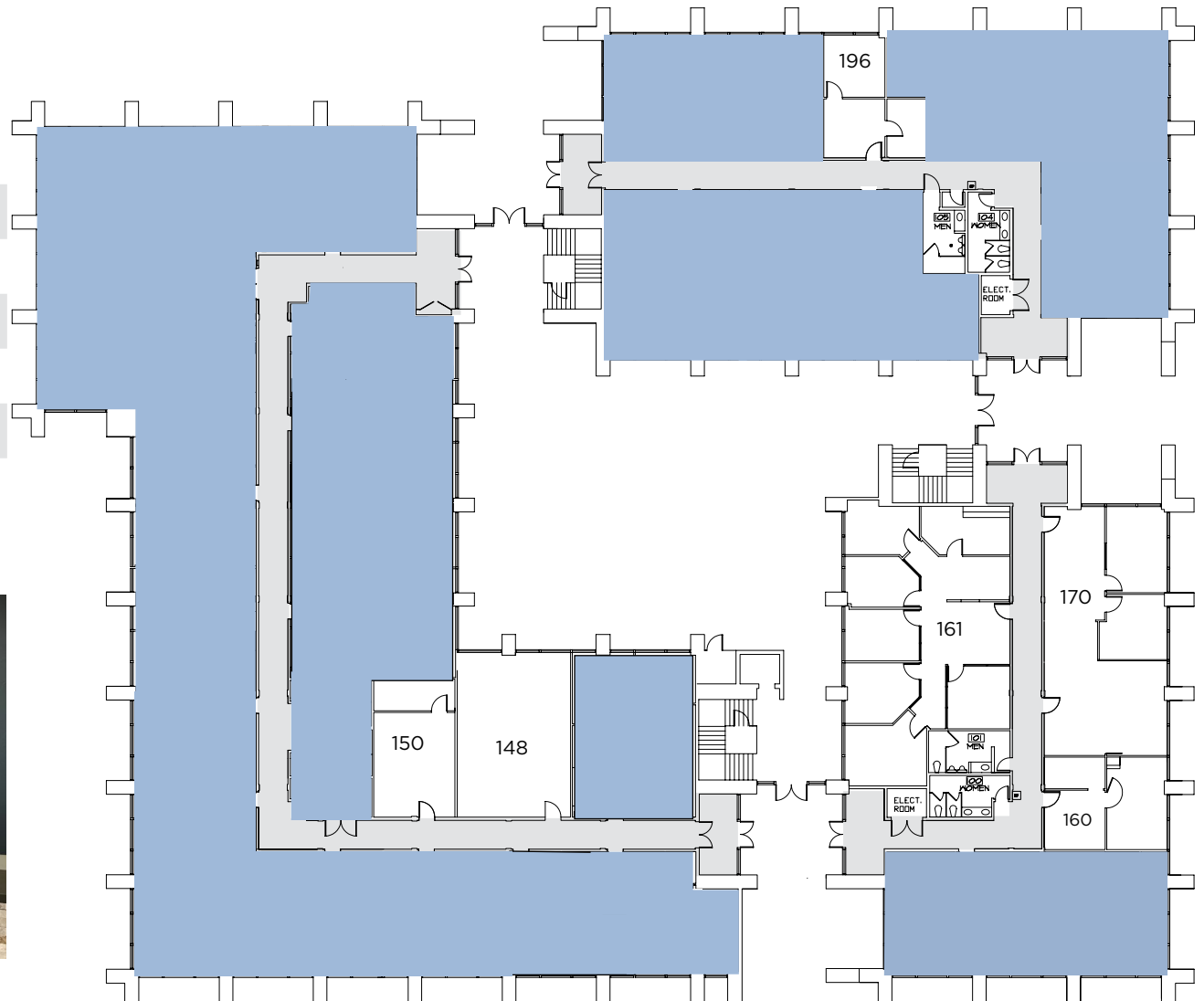
161 ±1,679

***170 ±1,607

196 ±429

**Suites 148 and 150 can be combined for ±1,271 RSF

***Suites 160 and 170 can be combined for ±2,092 RSF



1900 POINT WEST WAY
Sacramento, CA

KEVIN PARTINGTON
Executive Managing Director
(916) 288.4807
kevin.partington@cushwake.com
CA License NO: 01199010

SEAN MULLEN
Managing Director
(916) 288.4811
sean.mullen@cushwake.com
CA License NO: 01845406

KEVIN GOLDTHWAITE
Director
(916) 403.1818
kevin.goldthwaite@cushwake.com
CA License NO: 01911862

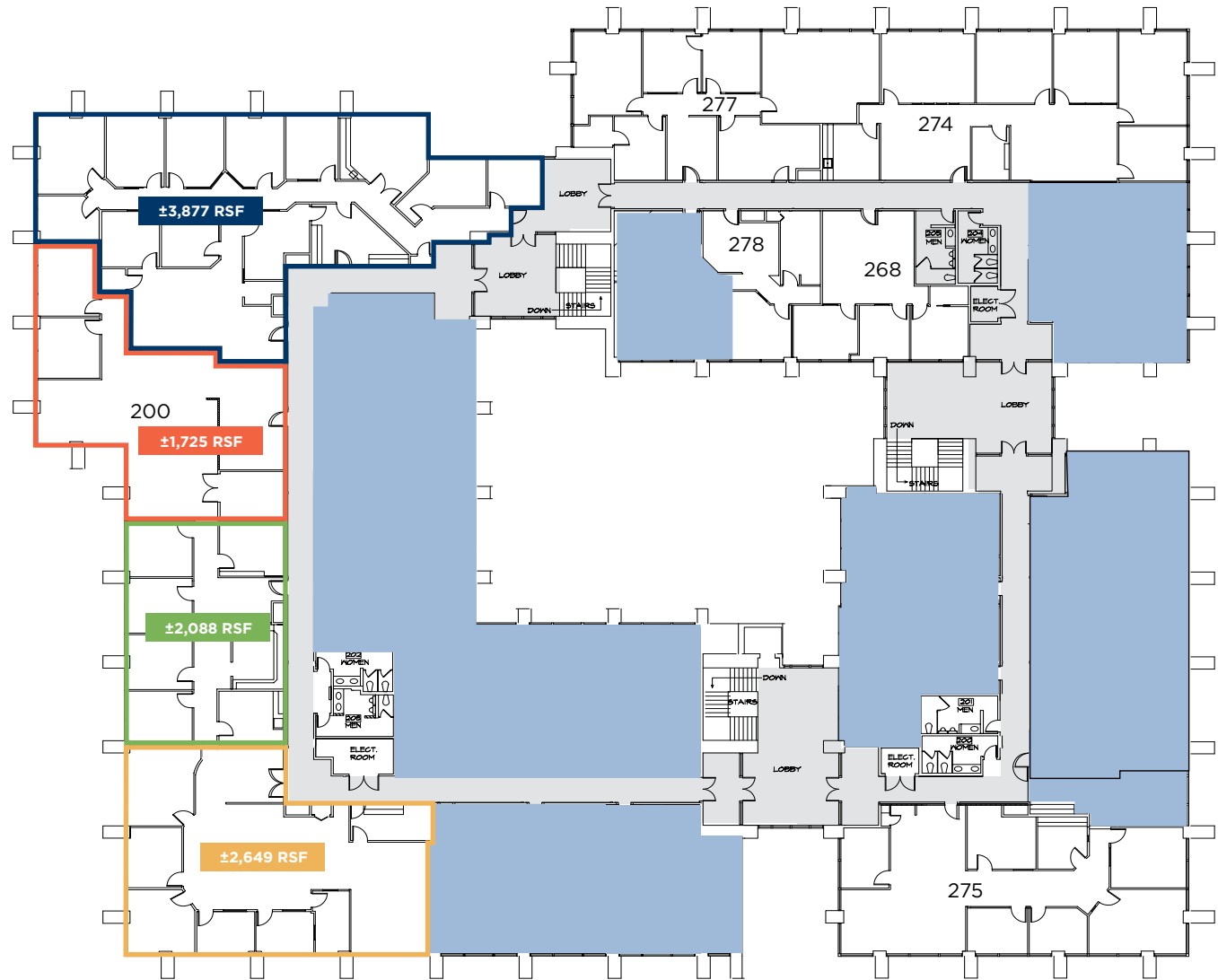
 **CUSHMAN & WAKEFIELD**
cushmanwakefield.com

Second Floor

SUITE RENTABLE SQUARE FEET

200	±10,349 (Divisible to 1,725 RSF)
268*	±948
274**	±2,590
275	±2,331
277**	±1,982
278*	±618 (Available in 30 Days)

* Suites 268 and 278 can be combined for ±1,566 RSF
 ** Suites 274 and 277 can be combined for ±4,572 RSF



1900 POINT WEST WAY
 Sacramento, CA

KEVIN PARTINGTON
 Executive Managing Director
 (916) 288.4807
 kevin.partington@cushwake.com
 CA License NO: 01199010

SEAN MULLEN
 Managing Director
 (916) 288.4811
 sean.mullen@cushwake.com
 CA License NO: 01845406

KEVIN GOLDTHWAITE
 Director
 (916) 403.1818
 kevin.goldthwaite@cushwake.com
 CA License NO: 01911862

CUSHMAN & WAKEFIELD
 cushmanwakefield.com



Airport
23 minutes



**Downtown
Sacramento**
10 minutes



SITE

Arden Fair Mall

Cal Expo



1900

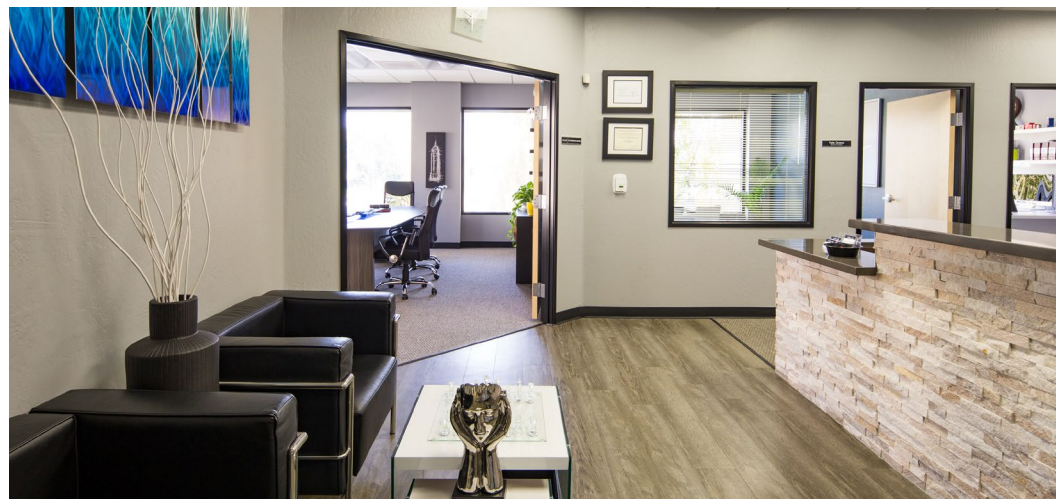
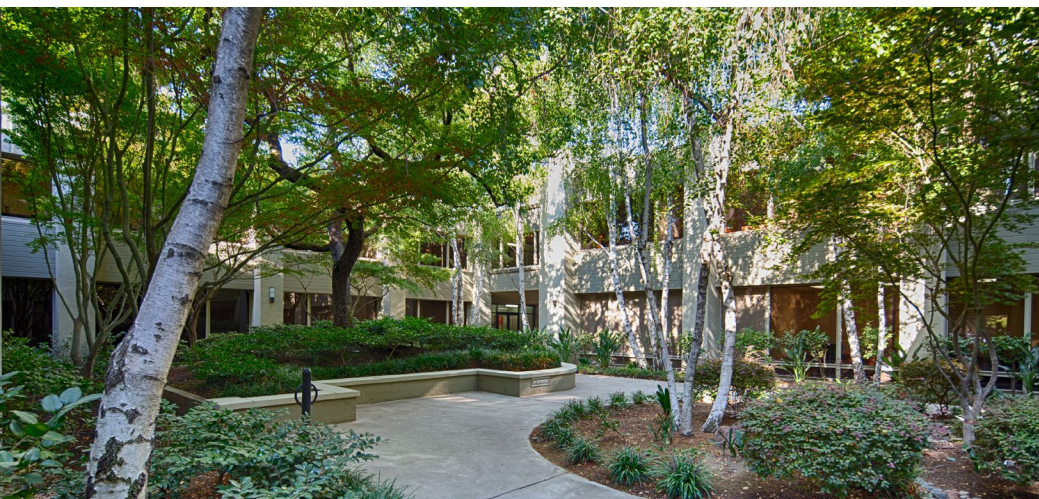
POINT WEST WAY
Sacramento, CA

KEVIN PARTINGTON
Executive Managing Director
(916) 288.4807
kevin.partington@cushwake.com
CA License NO: 01199010

SEAN MULLEN
Managing Director
(916) 288.4811
sean.mullen@cushwake.com
CA License NO: 01845406

KEVIN GOLDTHWAITE
Director
(916) 403.1818
kevin.goldthwaite@cushwake.com
CA License NO: 01911862

 **CUSHMAN &
WAKEFIELD**
cushmanwakefield.com



1900 POINT WEST WAY Sacramento, CA

©2025 Cushman & Wakefield. All rights reserved. The information contained in this communication is strictly confidential. This information has been obtained from sources believed to be reliable but has not been verified. NO WARRANTY OR REPRESENTATION, EXPRESS OR IMPLIED, IS MADE AS TO THE CONDITION OF THE PROPERTY (OR PROPERTIES) REFERENCED HEREIN OR AS TO THE ACCURACY OR COMPLETENESS OF THE INFORMATION CONTAINED HEREIN, AND SAME IS SUBMITTED SUBJECT TO ERRORS, OMISSIONS, CHANGE OF PRICE, RENTAL OR OTHER CONDITIONS, WITHDRAWAL WITHOUT NOTICE, AND TO ANY SPECIAL LISTING CONDITIONS IMPOSED BY THE PROPERTY OWNER(S). ANY PROJECTIONS, OPINIONS OR ESTIMATES ARE SUBJECT TO UNCERTAINTY AND DO NOT SIGNIFY CURRENT OR FUTURE PROPERTY PERFORMANCE. COE-PM-West-05.29.2025

KEVIN PARTINGTON
Executive Managing Director
(916) 288.4807
kevin.partington@cushwake.com
CA License NO: 01199010

SEAN MULLEN
Managing Director
(916) 288.4811
sean.mullen@cushwake.com
CA License NO: 01845406

KEVIN GOLDTHWAITE
Director
(916) 403.1818
kevin.goldthwaite@cushwake.com
CA License NO: 01911862

CUSHMAN & WAKEFIELD
cushmanwakefield.com