

# POINT WEST OFFICE SPACE

1515 River Park Drive, Sacramento, Ca  
±2,164 - 8,070 RSF Available



## Property Highlights



Easy Access to  
Highway 80 and  
Highway 160



Excellent access  
to Arden Fair Mall



Attractive  
Landscaping



Expansive  
window line  
and deck  
surrounding  
vacant suite



Located in Point  
West submarket



\$1.85  
PSF/Month FSG





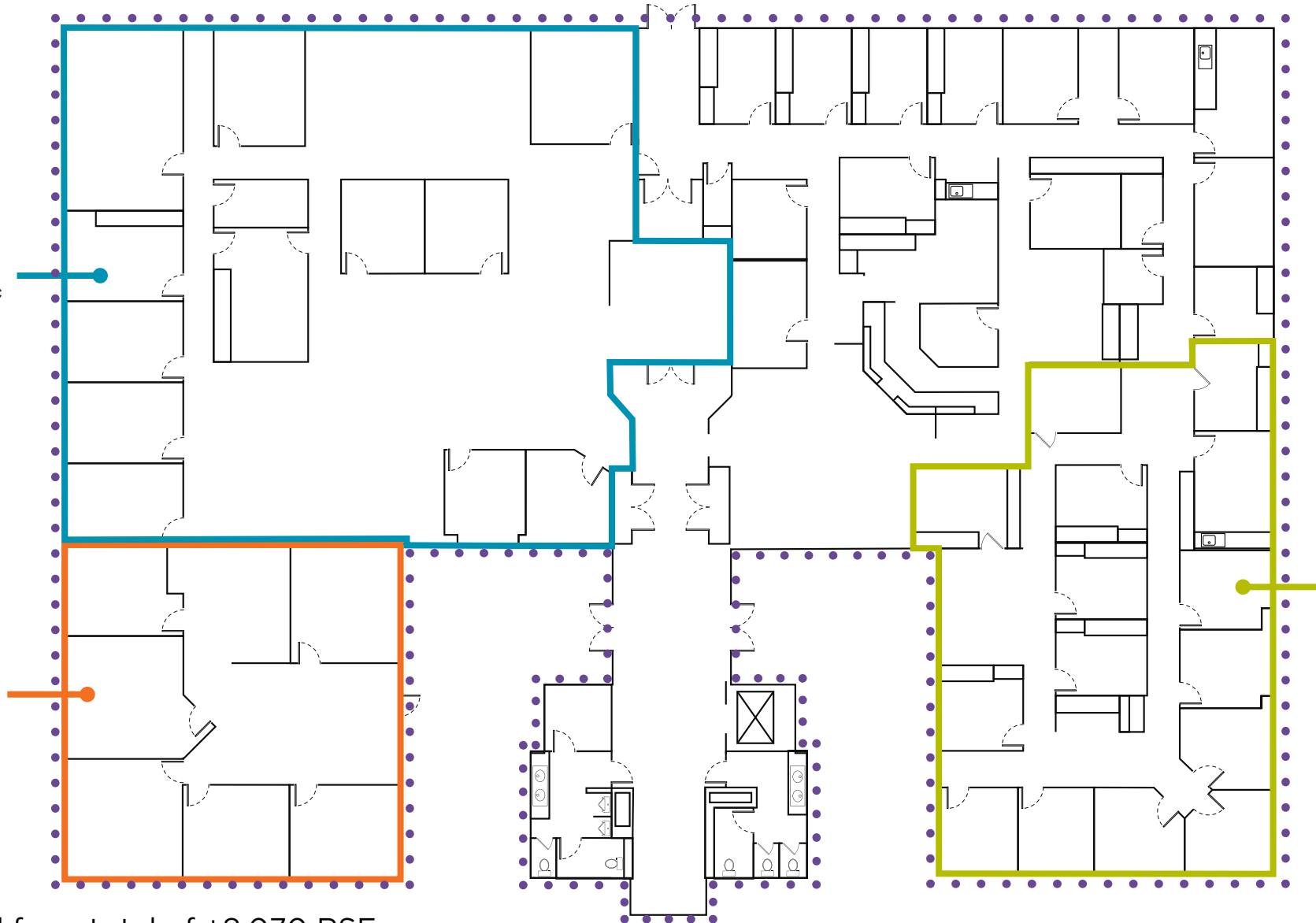
## First Floor Availability

±2,164 — 5,906 Square Feet

**Suite 100**  
±5,906 SF\*

**Suite 175**  
±2,164 SF\*

**Suite 110**  
±3,289 SF

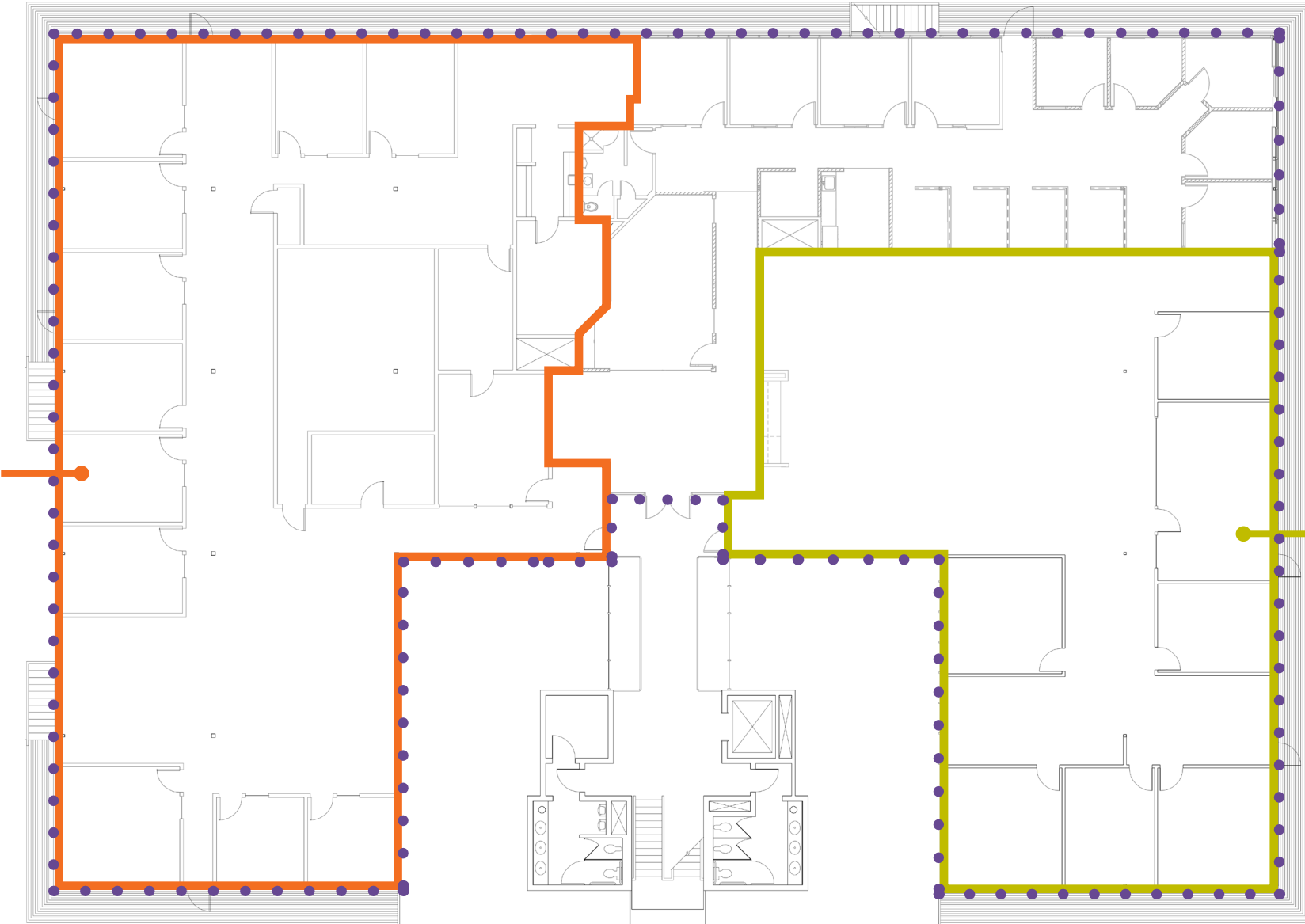


\* Can be combined for a total of ±8,070 RSF

# Second Floor Availability

±5,667 — 7,228 Square Feet

**Suite 210**  
±7,228 SF



**Suite 220**  
±5,667 SF





MIDTOWN  
SACRAMENTO



LOCATION



1515 RIVER PARK DRIVE

 **16 MIN** SACRAMENTO INTERNATIONAL AIRPORT  
 **10 MIN** SACRAMENTO CENTRAL BUSINESS DISTRICT

## 1. MARKET SQUARE

CRUNCH FITNESS	MIKUNI'S
CALIFORNIA PIZZA KITCHEN	PARTY CITY
SUBWAY	BARNES & NOBLE
XFINITY	DOS COYOTES
TERIYAKI GRILL	PEET'S COFFEE
BEST BUY	FEDEX
CHEESECAKE FACTORY	AT&T STORE

## 2. ARDEN MALL

MACY'S	MICHAEL KORS
JCPENNEY	ONIT COFFEE
APPLE	85C BAKERY CAFÉ
COACH	BJ'S RESTAURANT
MAC	LULUEMON
SEASON 52	GEN KOREAN BBQ
STARBUCKS	JAMBA JUICE

## 3. HOWEBOUT ARDEN

CENTURY THEATRES	NORDSTROM RACK
HOMEGOODS	THE CONTAINER STORE
STARBUCKS	SMASHBURGER
PINKBERRY	JAMBA JUICE
BONCHON	PETE'S RESTAURANT
AHI POKI	KURA REVOLVING SUSHI BAR
MOD PIZZA	CHEVRON

## 4. CAL EXPO

80+ EVENTS PER YEAR  
4M+ ANNUAL VISITORS

## 5. POINT WEST PLAZA

KOHL'S	OLD NAVY
HOBBY LOBBY	FIVE BELOW
PETCO	DAVID'S BRIDAL
STARBUCKS	HOBBY LOBBY
OLIVE GARDEN	BLACK BEAR







# CONTACT US

**Sean Mullen** | Managing Director

+1.916.288.4811

sean.mullen@cushwake.com

CA LIC #01845406

**Spencer Nielsen** | Director

+1.916.288.4531

CA LIC #01964163

spencer.nielsen@cushwake.com

400 Capitol Mall, Suite 1800

Sacramento, CA 95814

+1.916.288.4800

cushmanwakefield.com

©2024 Cushman & Wakefield. All Rights Reserved. The Information Contained In This Communication Is Strictly Confidential. This Information Has Been Obtained From Sources Believed To Be Reliable But Has Not Been Verified. No Warranty Or Representation, Express Or Implied, Is Made As To The Condition Of The Property (Or Properties) Referenced Herein Or As To The Accuracy Or Completeness Of The Information Contained Herein, And Same Is Submitted Subject To Errors, Omissions, Change Of Price, Rental Or Other Conditions, Withdrawal Without Notice, And To Any Special Listing Conditions Imposed By The Property Owner(S). Any Projections, Opinions Or Estimates Are Subject To Uncertainty And Do Not Signify Current Or Future Property Performance.

