

1540

1555

RIVER PARK DRIVE  
SACRAMENTO, CA

## PROPERTY HIGHLIGHTS

- Completely renovated and revitalized office park
- Excellent proximity to numerous retail & dining amenities
- Great access to Business 80 & Highway 160
- Conference facilities
- Spaces built out for immediate occupancy
- Featured spaces contain private outdoor balconies
- 4.00/1,000 SF parking ratio

### SPENCER NIELSEN

Director

+1 916 288 4531

[spencer.nielsen@cushwake.com](mailto:spencer.nielsen@cushwake.com)

CA LIC #01964163

### SEAN MULLEN

Managing Director

+1 916 288 4811

[sean.mullen@cushwake.com](mailto:sean.mullen@cushwake.com)

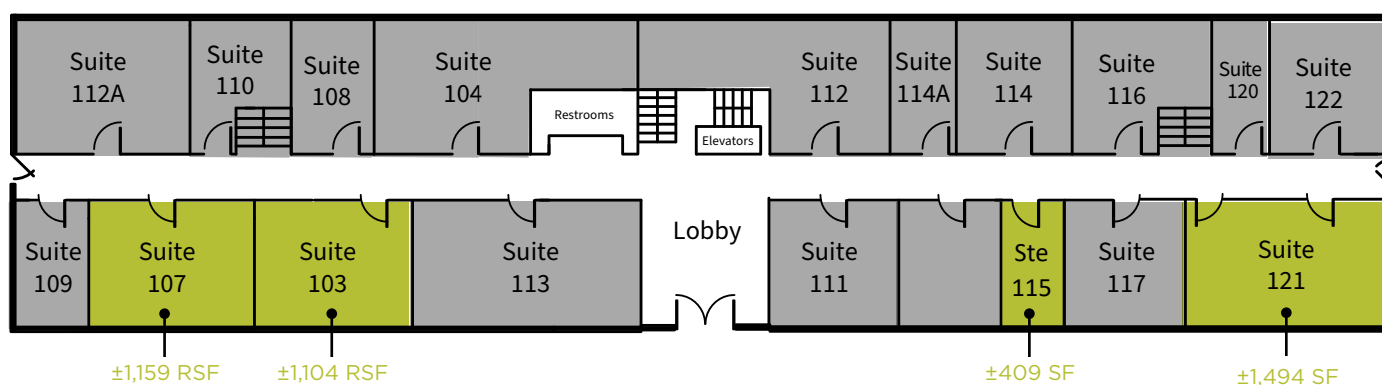
CA LIC #01845406



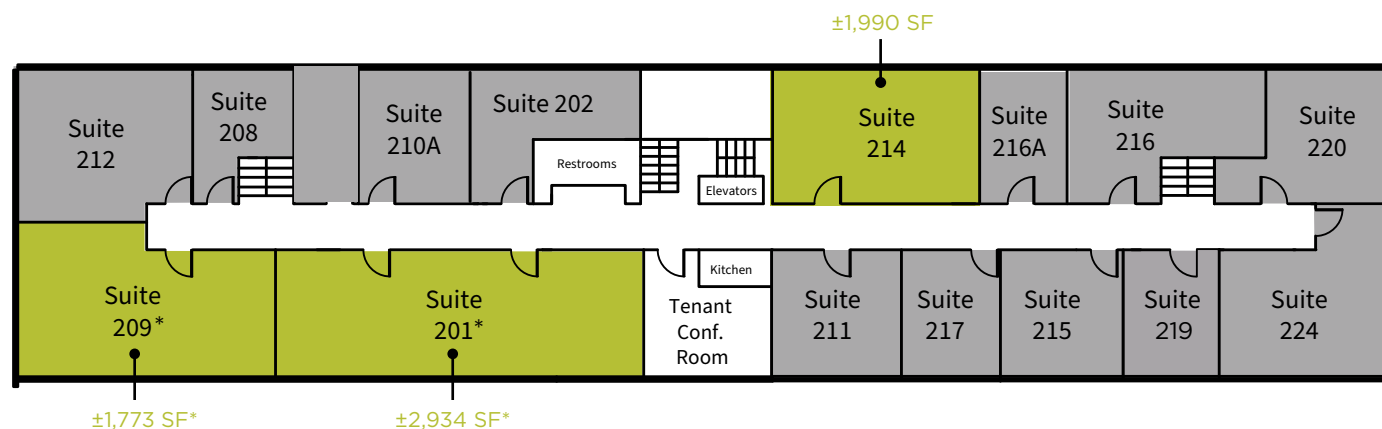
# 1540, 1555 RIVER PARK DRIVE | SACRAMENTO, CA

## 1540 RIVER PARK DRIVE

### 1ST FLOOR



### 2ND FLOOR



\*can be combined for ±4,707 SF

**AVAILABLE FOR LEASE** **LEASED**

#### SPENCER NIELSEN

Director  
+1 916 288 4531  
spencer.nielsen@cushwake.com  
CA LIC #01964163

#### SEAN MULLEN

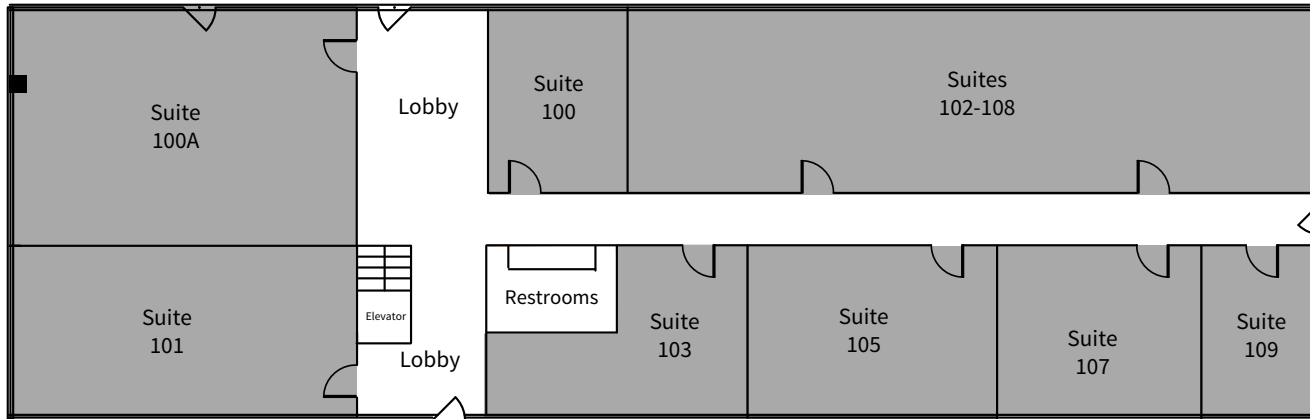
Managing Director  
+1 916 288 4811  
sean.mullen@cushwake.com  
CA LIC #01845406



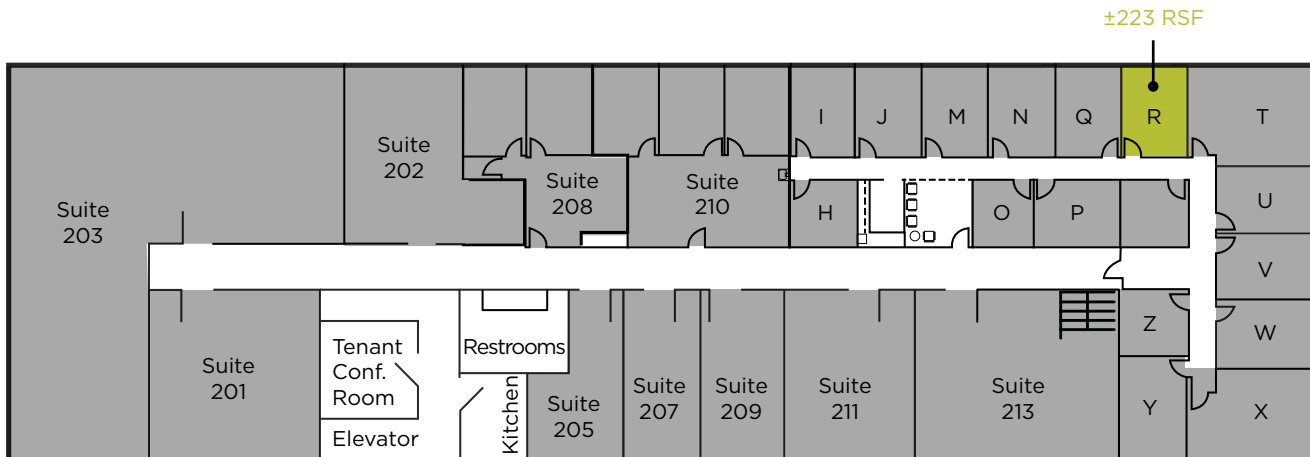
# 1540, 1555 RIVER PARK DRIVE | SACRAMENTO, CA

## 1555 RIVER PARK DRIVE

### 1ST FLOOR



### 2ND FLOOR



AVAILABLE FOR LEASE



LEASED

#### SPENCER NIELSEN

Director  
+1 916 288 4531  
spencer.nielsen@cushwake.com  
CA LIC #01964163

#### SEAN MULLEN

Managing Director  
+1 916 288 4811  
sean.mullen@cushwake.com  
CA LIC #01845406



# 1540, 1555 RIVER PARK DRIVE | SACRAMENTO, CA

## PROPERTY PHOTOS



### SPENCER NIELSEN

Director  
+1 916 288 4531  
spencer.nielsen@cushwake.com  
CA LIC #01964163

### SEAN MULLEN

Managing Director  
+1 916 288 4811  
sean.mullen@cushwake.com  
CA LIC #01845406



# 1540, 1555 RIVER PARK DRIVE | SACRAMENTO, CA



## SPENCER NIELSEN

Director  
+1 916 288 4531  
spencer.nielsen@cushwake.com  
CA LIC #01964163

## SEAN MULLEN

Managing Director  
+1 916 288 4811  
sean.mullen@cushwake.com  
CA LIC #01845406



**SPENCER NIELSEN | DIRECTOR**

+1 916 288 4531

[spencer.nielsen@cushwake.com](mailto:spencer.nielsen@cushwake.com)

CA LIC #01964163

**SEAN MULLEN | MANAGING DIRECTOR**

+1 916 288 4811

[sean.mullen@cushwake.com](mailto:sean.mullen@cushwake.com)

CA LIC #01845406

400 Capitol Mall, Suite 1800

Sacramento, CA 95814

+1 916 288 4800

**[cushmanwakefield.com](http://cushmanwakefield.com)**