

11344 COLOMA RD, GOLD RIVER, CA

# Regents *Park*



**Move-In Ready Spaces Available with Flexible Lease Terms - \$1.55 PSF/Month Start Rent**

*For Lease*

**±140,500 SF Office Park**





NATURE MEETS

# Modernity

Welcome to **Regents Park** in Gold River, California! Nestled in a serene, park-like environment, this business park offers a tranquil setting that fosters productivity and well-being. With minimized touchpoints and direct suite access, your safety and convenience are our top priorities. Enjoy the ample daylight that floods each workspace, creating a bright and inviting atmosphere perfect for innovation and collaboration.







## PROPERTY

# Highlights



Fitness Facility



Showers



Martin's Famous Street  
Tacos with outdoor  
eating area



Indoor/Outdoor  
Tenant Lounge



Property Management  
Office



Shared Conference Room



Ample Amount  
of Parking



Walking Distance to  
American River Bike Trail





## FLOOR PLAN

# Building 100

### 2<sup>ND</sup>FLOOR

Suite 160

±745 RSF

Suite 170

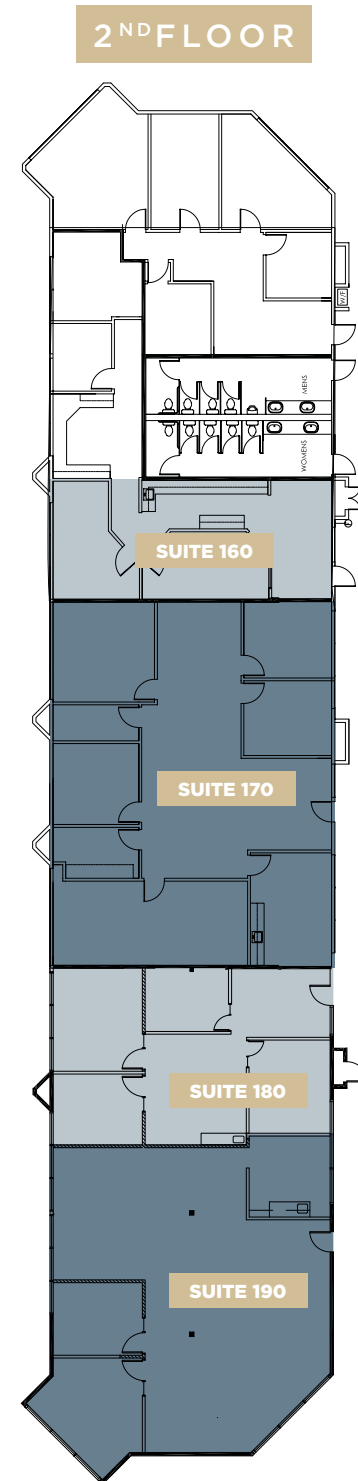
±2,511 RSF

Suite 180

±1,207 RSF

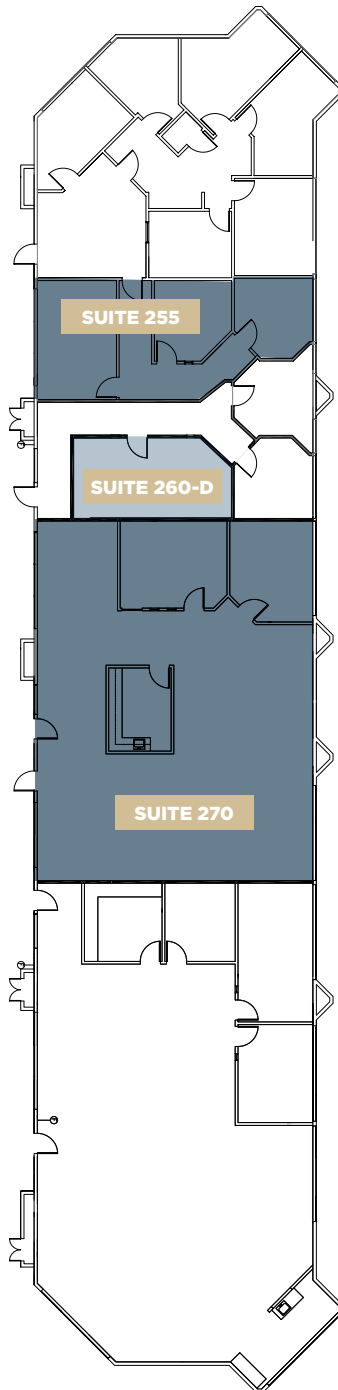
Suite 190

±2,119 SF





2<sup>ND</sup> FLOOR



FLOOR PLAN

# Building 200

2<sup>ND</sup> FLOOR

Suite 255  
±764 RSF

Suite 260-D  
±415 RSF

Suite 270  
±2,509 RSF







## FLOOR PLAN

# Building 300

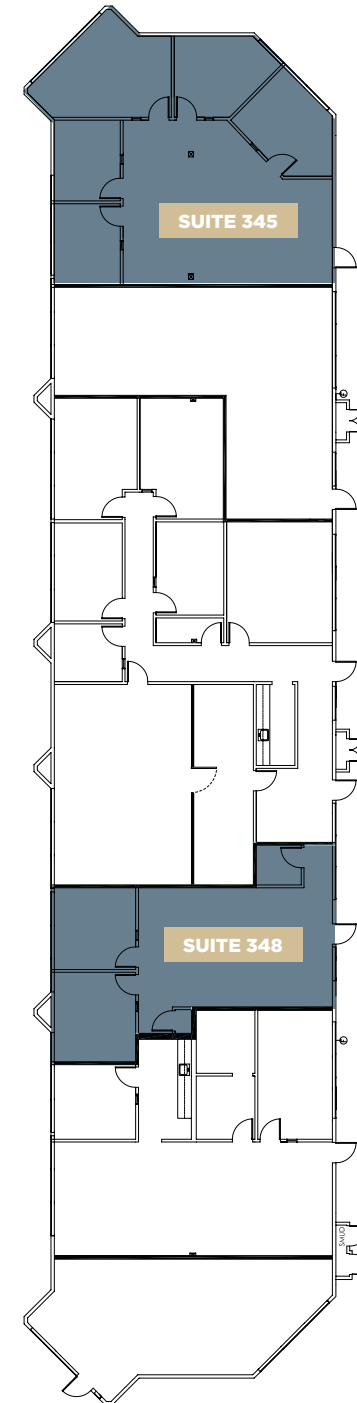
1<sup>ST</sup>FLOOR

Suite 345  
±1,672 RSF

Suite 348  
±1,060 RSF

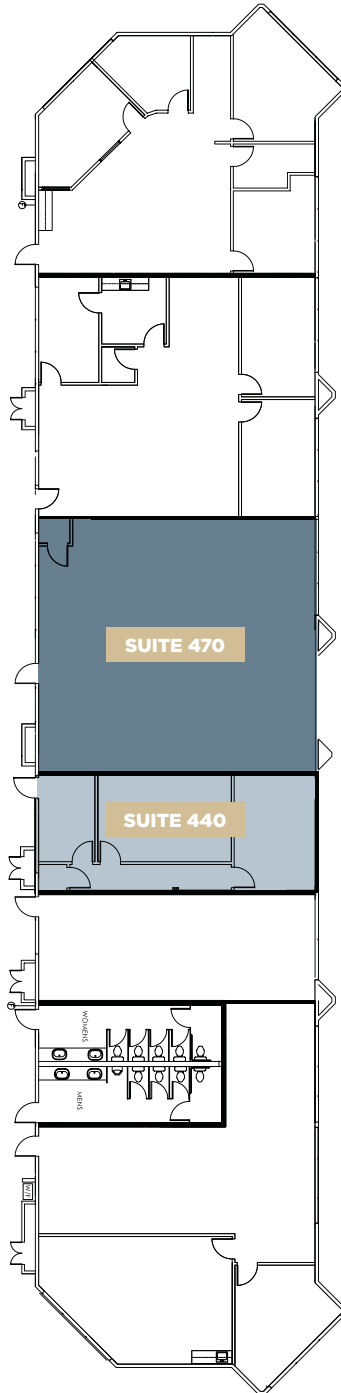


1<sup>ST</sup>FLOOR





2<sup>ND</sup>FLOOR



FLOOR PLAN

# Building 400

2<sup>ND</sup>FLOOR

Suite 440  
±871 RSF

Suite 470  
±1,639 RSF







FLOOR PLAN

# Building 500

1<sup>ST</sup>FLOOR

Suite 545  
±1,601 RSF

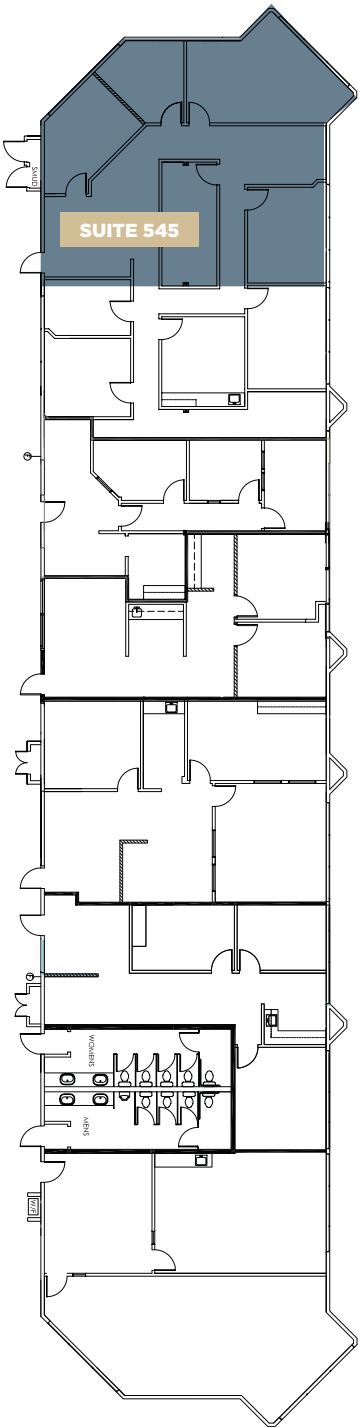
2<sup>ND</sup>FLOOR

Suite 580\*  
±2,293 SF

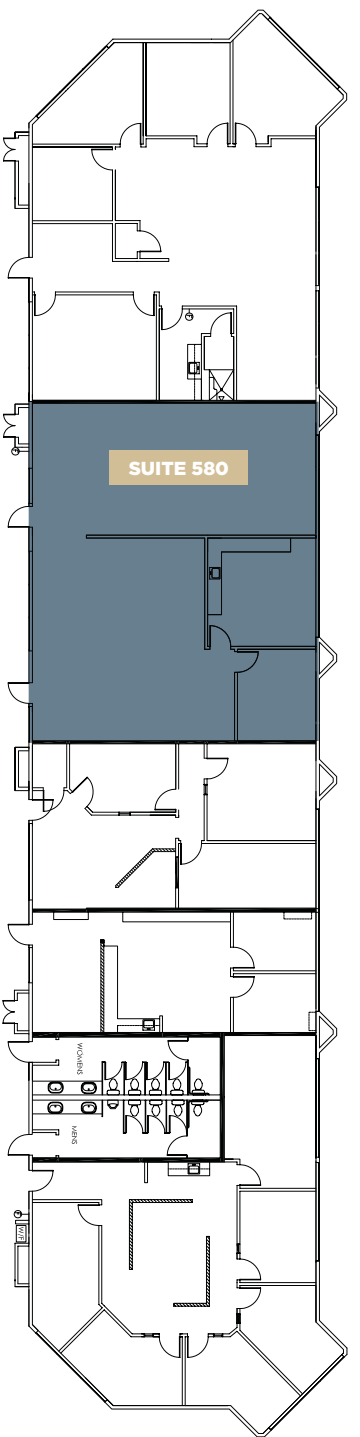
*\*Available in 30 Days*



1<sup>ST</sup>FLOOR

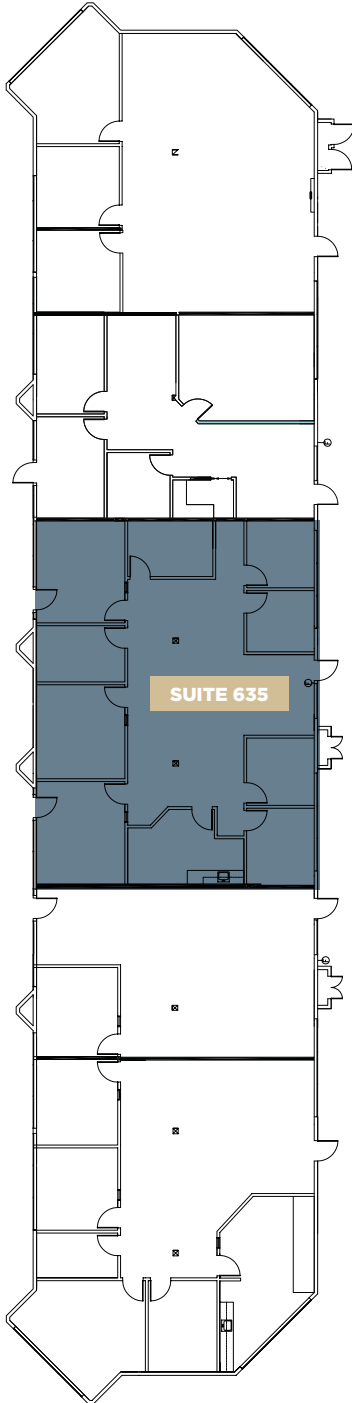


2<sup>ND</sup>FLOOR





1<sup>ST</sup>FLOOR



FLOOR PLAN

# Building 600

1<sup>ST</sup>FLOOR

Suite 635  
±2,438 RSF







## FLOOR PLAN

# Building 700

### 1<sup>ST</sup>FLOOR

Suite 710

±2,588 SF

### 2<sup>ND</sup>FLOOR

Suite 740

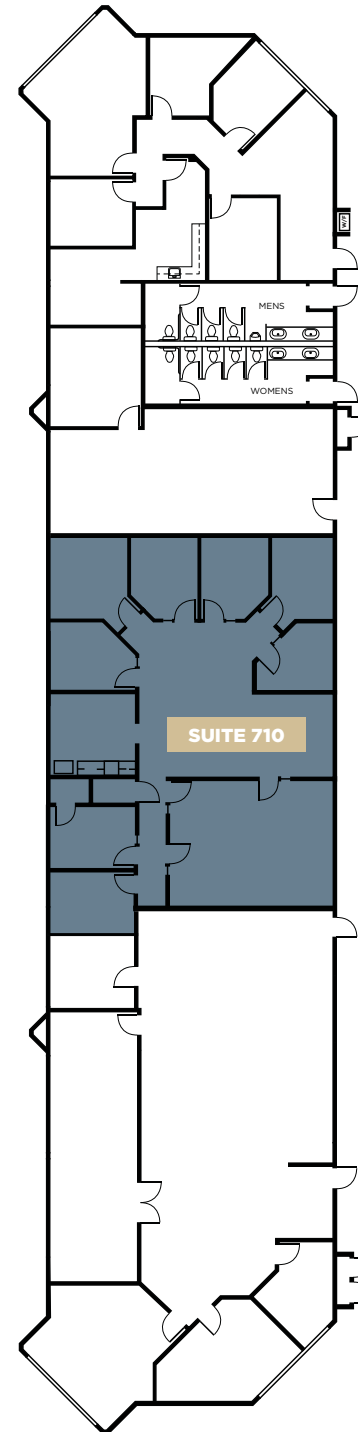
±1,821 SF

Suite 745

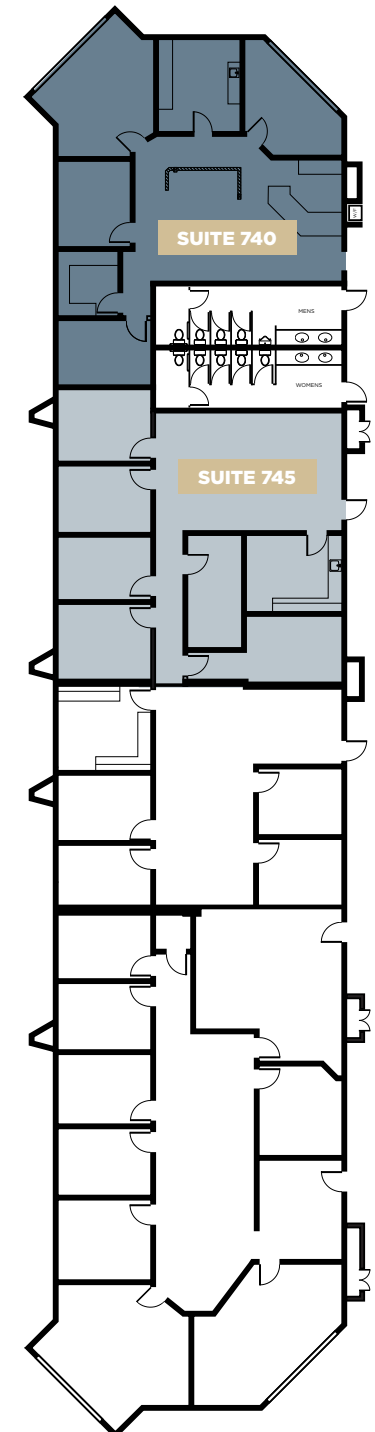
±1,881 SF



### 1<sup>ST</sup>FLOOR

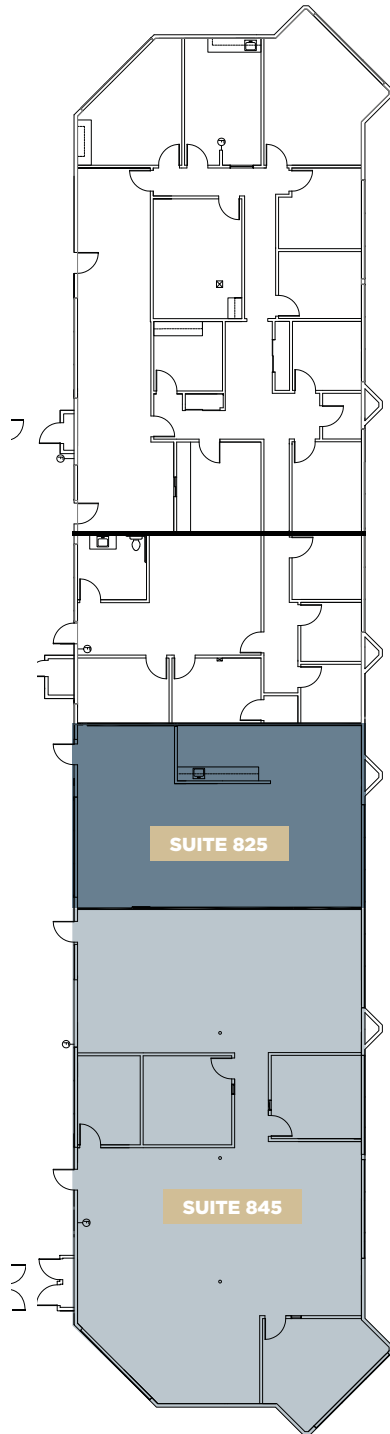


### 2<sup>ND</sup>FLOOR

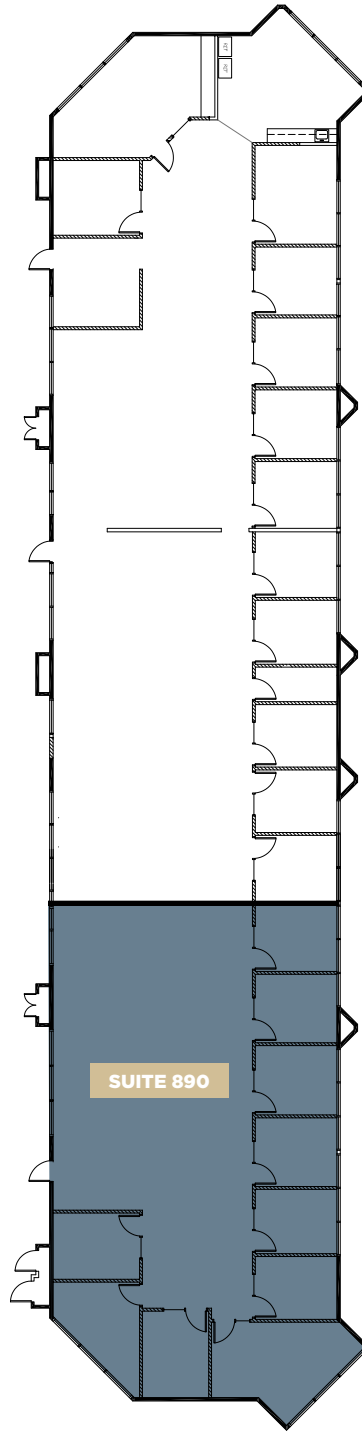




1<sup>ST</sup>FLOOR



2<sup>ND</sup>FLOOR



FLOOR PLAN

# Building 800

1<sup>ST</sup>FLOOR

Suite 825  
±1,416 RSF

2<sup>ND</sup>FLOOR

Suite 890\*  
±3,327 RSF

*\*Available in 30 Days*

Suite 845  
±3,260 RSF





FIND YOUR

# Favorite SPOT

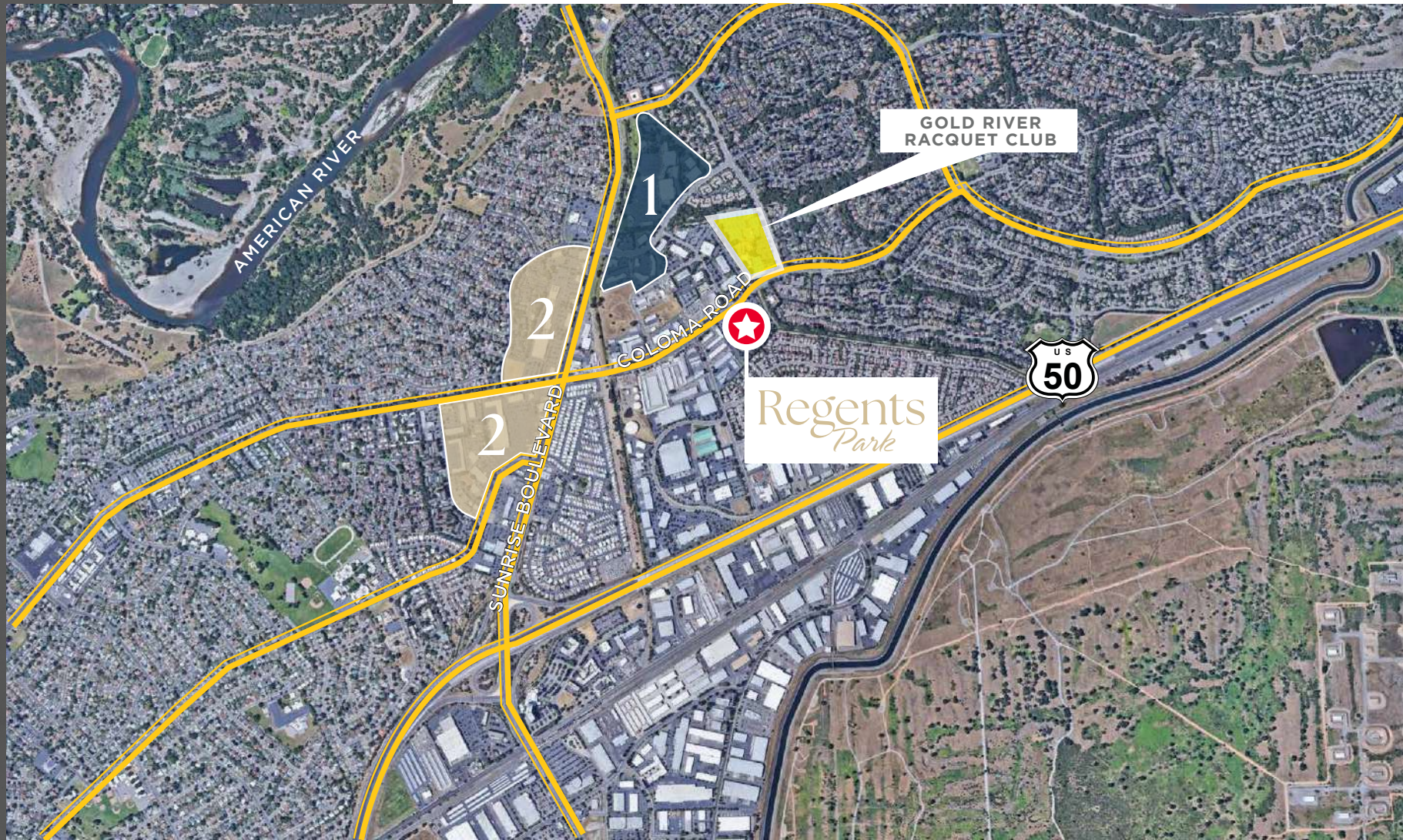
1

- APPLE BEES GRILL + BAR
- IL FORNO CLASSICO
- BANK AMERICA
- BELAIR
- WELLSFARGO
- CHASE BANK
- MOUNTAIN MIKE'S PIZZA
- STARBUCKS
- OUTBACK STEAKHOUSE
- WELLS FARGO
- JACK'S URBAN EATS
- RITE AID
- UPS STORE
- ZINFANDEL CALIFORNIA CUISINE

2

- CARL'S JR
- DOMINIO'S PIZZA
- SUBWAY
- INDIAN SPICE
- CHINA STAR
- CHICK-FIL-A
- SPORTMAN'S WAREHOUSE
- DICKEY'S BBQ PIT
- IN-N- OUT
- CALIFORNIA FITNESS
- AVIS/BUDGET CAR RENTAL
- 24 FITNESS

- IHOP
- MEN'S WAREHOUSE
- BASKIN ROBBINS
- SKY SUSHI
- CARL'S JR
- DENNY'S
- THAI SMILE
- PIZZA GUYS
- MCDONALD'S
- STARBUCKS





11344 COLOMA RD, GOLD RIVER, CA

# Regents *Park*



For more information, please contact:

**SEAN MULLEN**

Managing Director

[sean.mullen@cushwake.com](mailto:sean.mullen@cushwake.com)

LIC #01845406

**KEVIN PARTINGTON**

Executive Managing Director

[kevin.partington@cushwake.com](mailto:kevin.partington@cushwake.com)

LIC #01193241

**SPENCER NIELSEN**

Director

[spencer.nielsen@cushwake.com](mailto:spencer.nielsen@cushwake.com)

LIC #01964163



©2025 Cushman & Wakefield. All rights reserved. The information contained in this communication is strictly confidential. This information has been obtained from sources believed to be reliable but has not been verified. NO WARRANTY OR REPRESENTATION, EXPRESS OR IMPLIED, IS MADE AS TO THE CONDITION OF THE PROPERTY (OR PROPERTIES) REFERENCED HEREIN OR AS TO THE ACCURACY OR COMPLETENESS OF THE INFORMATION CONTAINED HEREIN, AND SAME IS SUBMITTED SUBJECT TO ERRORS, OMISSIONS, CHANGE OF PRICE, RENTAL OR OTHER CONDITIONS, WITHDRAWAL WITHOUT NOTICE, AND TO ANY SPECIAL LISTING CONDITIONS IMPOSED BY THE PROPERTY OWNER(S). ANY PROJECTIONS, OPINIONS OR ESTIMATES ARE SUBJECT TO UNCERTAINTY AND DO NOT SIGNIFY CURRENT OR FUTURE PROPERTY PERFORMANCE. COE-PM-West-06.24.2025