

3301 OLCOTT STREET

SANTA CLARA, CALIFORNIA

NEW MARKET READY WORK!

FOR LEASE

±34,651 SF

SINGLE STORY R&D BUILDING WITH R&D LAB, WAREHOUSE/MFG SPACE
DOCK & GRADE LEVEL LOADING

Kalil Jenab | **Vice Chairman** | kalil.jenab@cushwake.com | +1 408 200 8800 | LIC #00848988
Steven Jenab | **Senior Director** | steven.jenab@cushwake.com | +1 650 320 0211 | LIC # 02085072
525 University Ave, Suite 220 | Palo Alto, California 94301 | main +1 650 852 1200 | fax +1 650 618 8560
cushmanwakefield.com



3301 OLCOTT STREET

SANTA CLARA, CALIFORNIA

HIGHLIGHTS

- Single Story Santa Clara R&D building with Heavy Power and Dock & Grade Level Loading
- ±34,651 SF Office/R&D with R&D lab, Warehouse/MFG space
- Monument Signage/Identity on Highway 101
- Good mix of open office/R&D, warehouse, private offices & conference rooms
- Lunchrooms
- 2500 AMPs @ 277/480 Volts | Silicon Valley Power
- 600 KW Onan | Cummins Backup Generator
- Covered Equipment Pad with Chiller, CDA and Vacuum
- Great Access to HWY 101, San Tomas and Central Expressways
- Walking Distance to Santa Clara Square Marketplace with many Restaurants and Whole Foods Market
- Parking Ratio 4.0/1,000
- Showers
- Call to Tour



3301 OLCOTT STREET

SANTA CLARA, CALIFORNIA

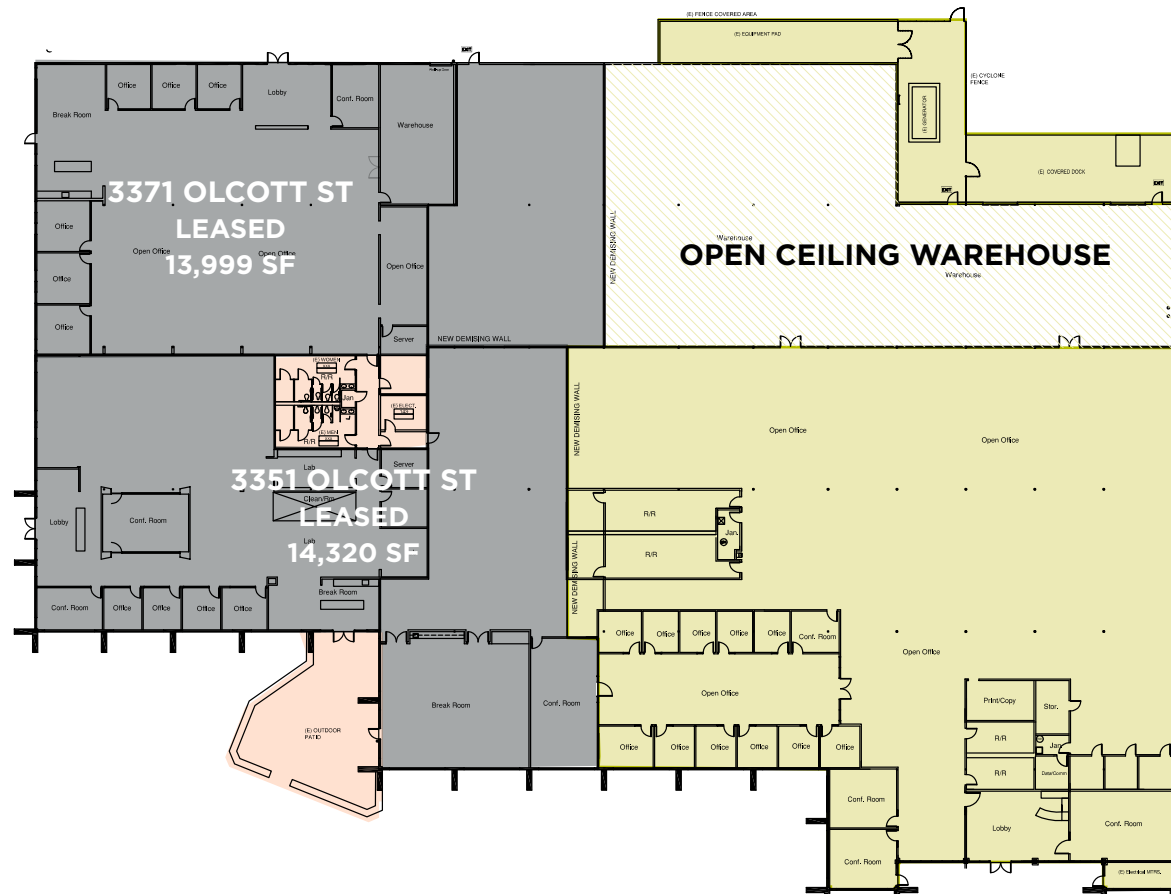
FLOOR PLAN

 3301 Olcott Street
±34,651 SF

 Leased

 Common Areas

Not to scale





3301 OLCOTT STREET PHOTOS



3301 OLCOTT STREET

SANTA CLARA, CALIFORNIA

SITE PLAN

PARKING SUMMARY	
DESCRIPTION	STALLS
STANDARD PARKING	249
ACCESSIBLE PARKING	8
TOTAL	257



3301 OLCOTT STREET

SANTA CLARA, CALIFORNIA

AMENITIES



Kalil Jenab | Vice Chairman | kalil.jenab@cushwake.com | +1 408 200 8800 | LIC #00848988
Steven Jenab | Senior Director | steven.jenab@cushwake.com | +1 650 320 0211 | LIC # 02085072
525 University Ave, Suite 220 | Palo Alto, California 94301 | main +1 650 852 1200 | fax +1 650 618 8560
cushmanwakefield.com



3301 OLCOTT STREET

SANTA CLARA, CALIFORNIA



Kalil Jenab | Vice Chairman | kalil.jenab@cushwake.com | +1 408 200 8800 | LIC #00848988
Steven Jenab | Senior Director | steven.jenab@cushwake.com | +1 650 320 0211 | LIC # 02085072
525 University Ave, Suite 220 | Palo Alto, California 94301 | main +1 650 852 1200 | fax +1 650 618 8560
cushmanwakefield.com



©2024 Cushman & Wakefield. All rights reserved. The information contained in this communication is strictly confidential. This information has been obtained from sources believed to be reliable but has not been verified. NO WARRANTY OR REPRESENTATION, EXPRESS OR IMPLIED, IS MADE AS TO THE CONDITION OF THE PROPERTY (OR PROPERTIES) REFERENCED HEREIN OR AS TO THE ACCURACY OR COMPLETENESS OF THE INFORMATION CONTAINED HEREIN, AND SAME IS SUBMITTED SUBJECT TO ERRORS, OMISSIONS, CHANGE OF PRICE, RENTAL OR OTHER CONDITIONS, WITHDRAWAL WITHOUT NOTICE, AND TO ANY SPECIAL LISTING CONDITIONS IMPOSED BY THE PROPERTY OWNER(S). ANY PROJECTIONS, OPINIONS OR ESTIMATES ARE SUBJECT TO UNCERTAINTY AND DO NOT SIGNIFY CURRENT OR FUTURE PROPERTY PERFORMANCE. COE-PM-WEST- 01/26/24