

±762 SF - ±9,208 SF | OFFICES FOR LEASE

# 2290 N. FIRST STREET

## SAN JOSE, CALIFORNIA



**FOR MORE INFORMATION, CONTACT:**

**JON DECOITE** | Managing Director | P +1 408 615 3408 | [jon.decoite@cushwake.com](mailto:jon.decoite@cushwake.com) | LIC #01471300  
**MIKE BAKER** | Senior Director | P +1 408 615 3406 | [mike.baker@cushwake.com](mailto:mike.baker@cushwake.com) | LIC #01884037



**CUSHMAN &  
WAKEFIELD**



**HARVEST  
PROPERTIES**



# 2290 N. FIRST STREET SAN JOSE, CALIFORNIA

±762 SF - ±9,208 SF | OFFICES FOR LEASE

## AVAILABILITY

SUITE 108: ±762 SF

SUITE 209: ±1,050 SF

SUITE 300: ±3,008 SF

SUITE 202B: ±3,098 SF

SUITE 204/208: ±6,036 SF\*

SUITE 102: ±9,208 SF

\*CAN BE DEMISED TO  
±3,696 SF & ±2,340 SF

## HIGHLIGHTS

- Under New Ownership and Management
- Prominent Corner Location in North San Jose
- Immediate Access to Highways 101, 87 & the San Jose Airport
- Abundant Amenities within Walking Distance
- Light Rail Station Immediately in Front of the Building
- Showers in Building
- ±3.8/1,000 Parking



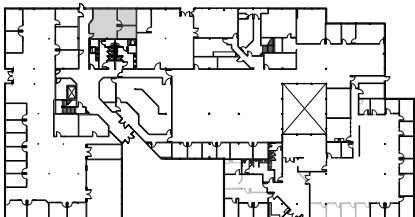
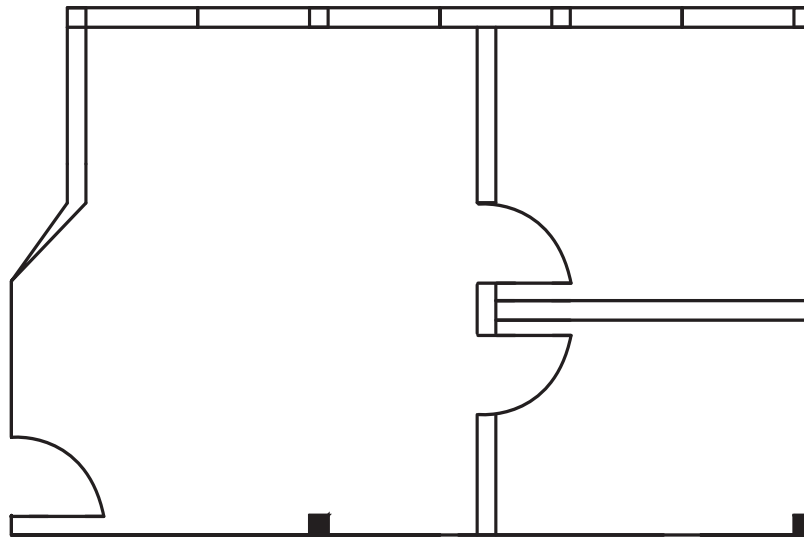
# 2290 N. FIRST STREET SAN JOSE, CALIFORNIA

±762 SF - ±9,208 SF | OFFICES FOR LEASE

## FLOORPLAN

**SUITE 108: ±762 SF**

Available Now

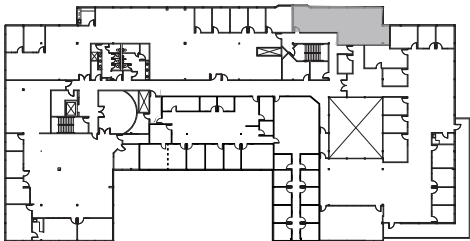
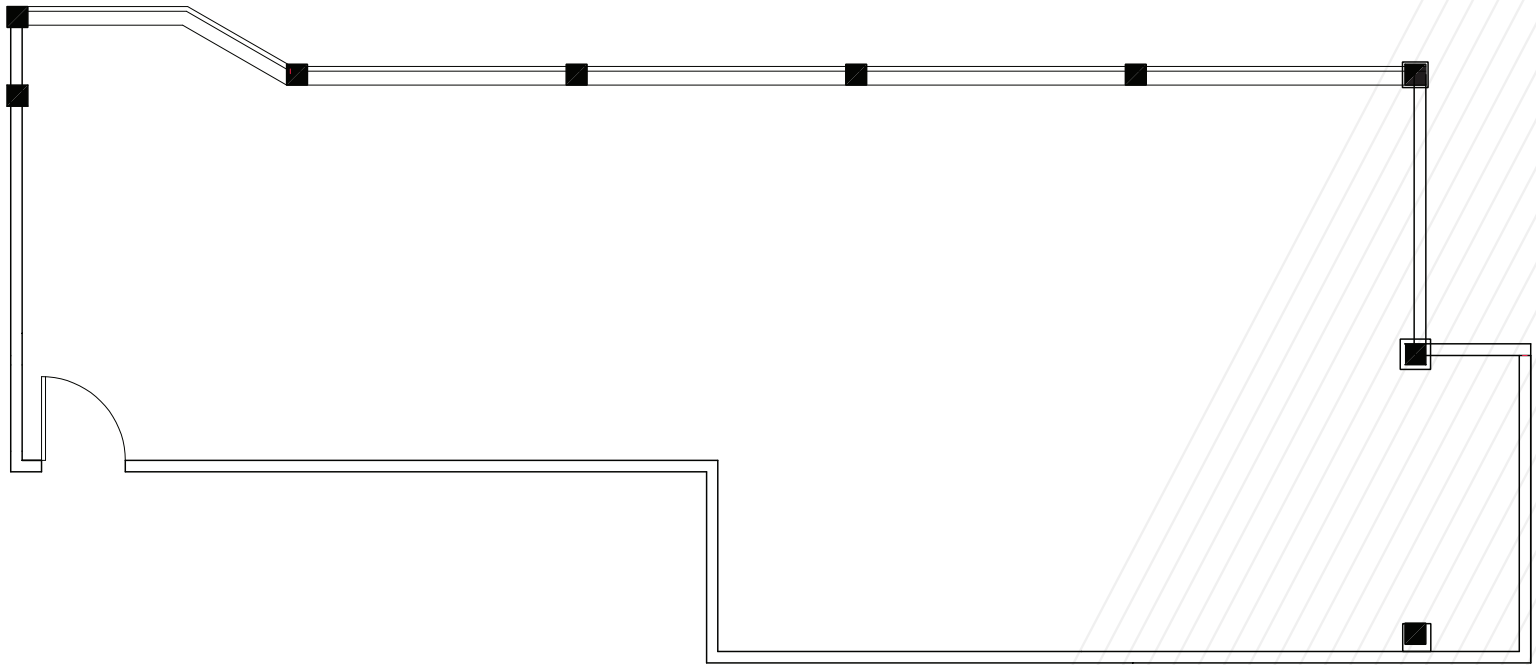


# 2290 N. FIRST STREET SAN JOSE, CALIFORNIA

±762 SF - ±9,208 SF | OFFICES FOR LEASE

## FLOORPLAN

**SUITE 209: ±1,050 SF**  
Available Now



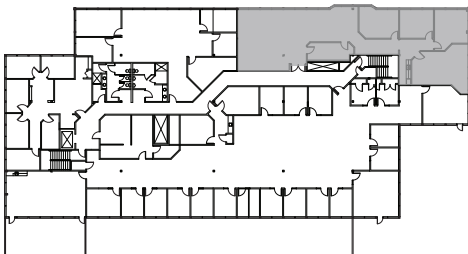
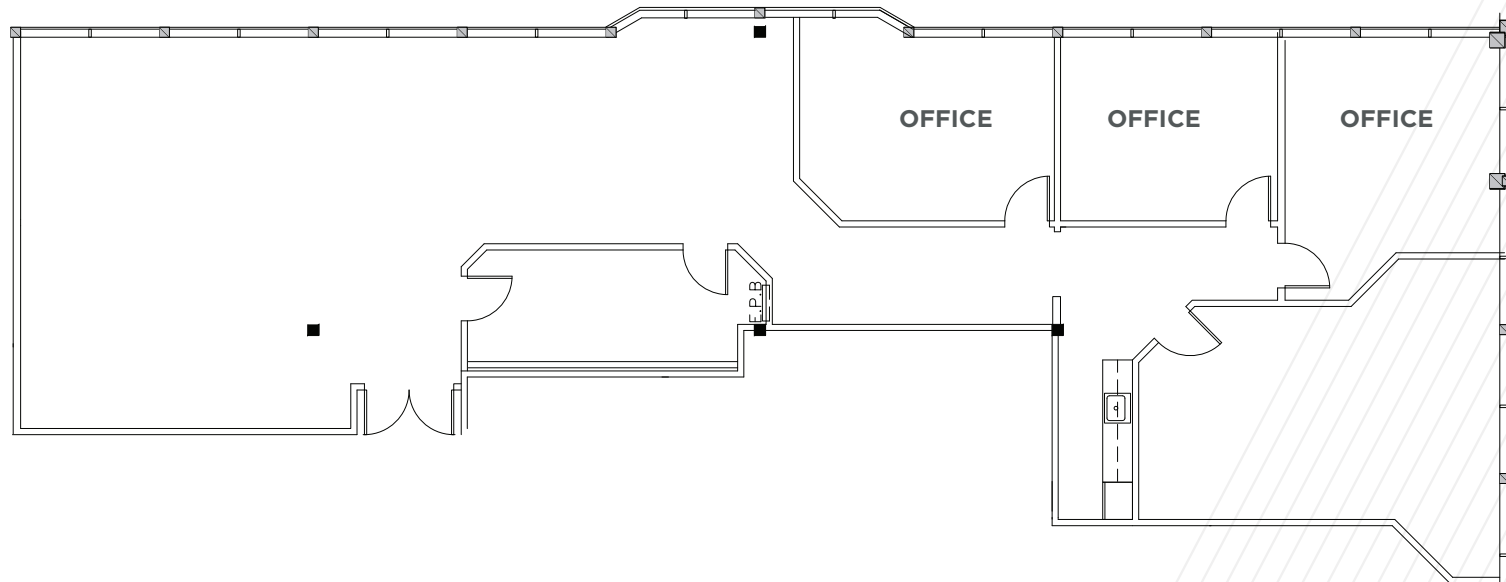


# 2290 N. FIRST STREET SAN JOSE, CALIFORNIA

±762 SF - ±9,208 SF | OFFICES FOR LEASE

## FLOORPLAN

**SUITE 300: ±3,008 SF**  
Available Now

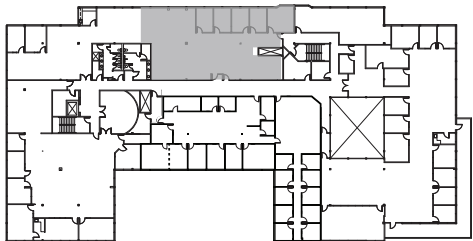
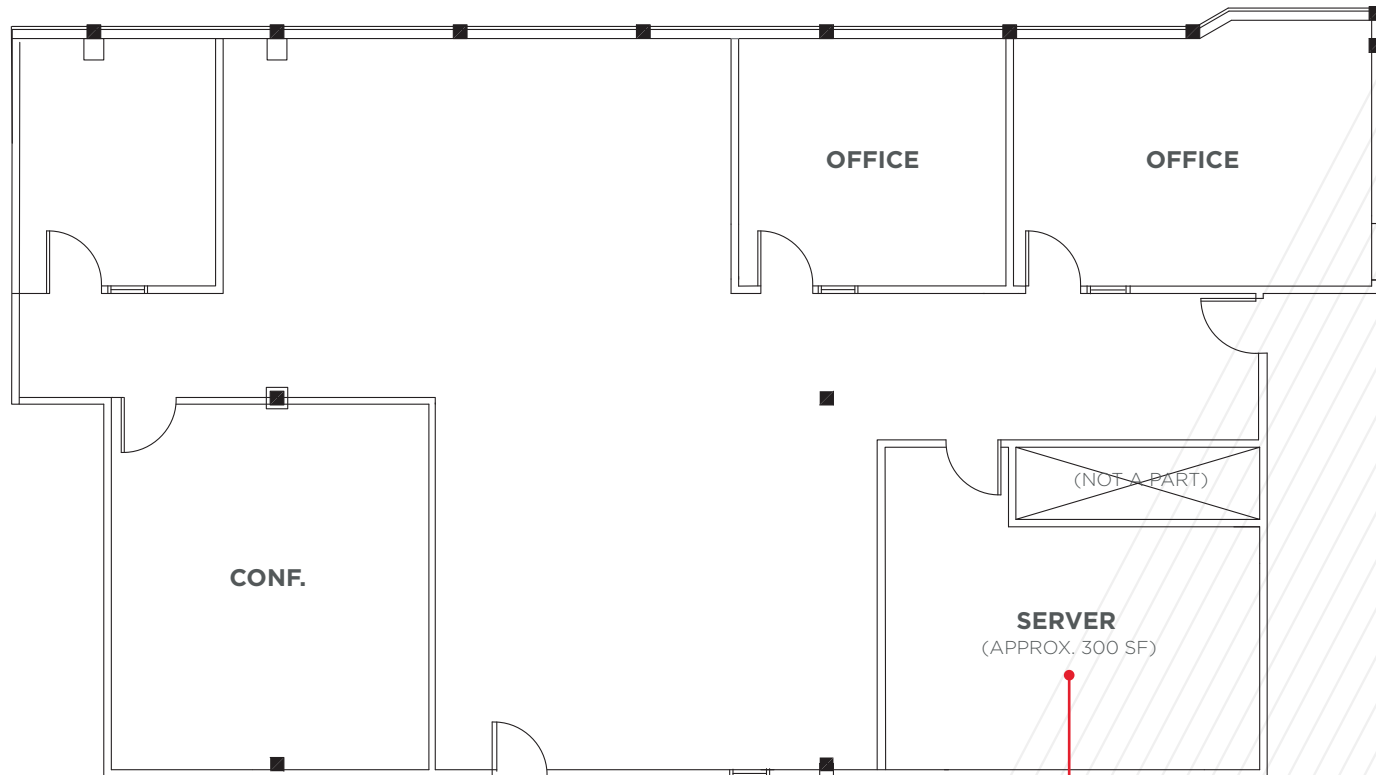


# 2290 N. FIRST STREET SAN JOSE, CALIFORNIA

±762 SF - ±9,208 SF | OFFICES FOR LEASE

## FLOORPLAN

**SUITE 202B: ±3,098 SF**  
Available Now



SUPPLEMENTAL  
POWER AND HVAC



# 2290 N. FIRST STREET SAN JOSE, CALIFORNIA

±762 SF - ±9,208 SF | OFFICES FOR LEASE

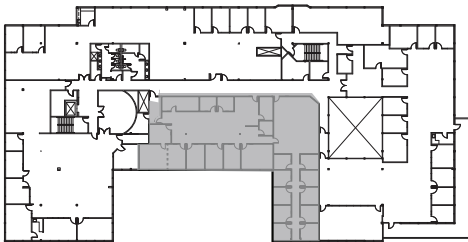
## FLOORPLAN

### SUITE 204/208:

±6,036 SF\*

Available Now

\*Can Be Demised to  
±3,696 SF & ±2,340 SF

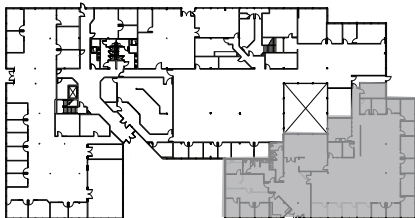
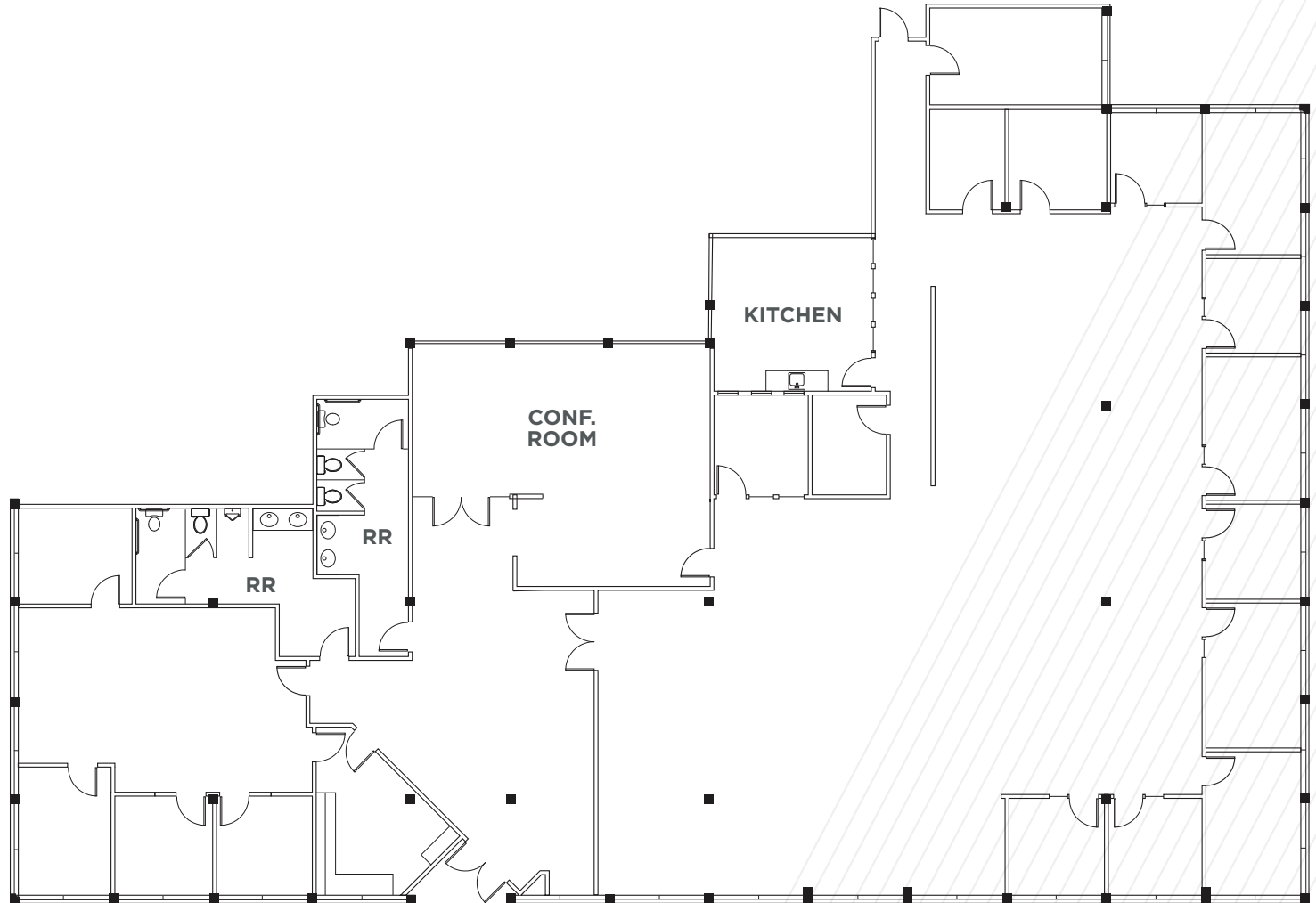


# 2290 N. FIRST STREET SAN JOSE, CALIFORNIA

±762 SF - ±9,208 SF | OFFICES FOR LEASE

## FLOORPLAN

**SUITE 102: ±9,208 SF**  
Available Now





# 2290 N. FIRST STREET SAN JOSE, CALIFORNIA

## LOCATION

2290 North First Street is located on the east side of North First Street, North of Brokaw and south of Charcot Avenue, approximately 1 mile east of Highway 101.

The Property is centrally located with easy access to Highways 101, 880 and 87.



±762 SF - ±9,208 SF | OFFICES FOR LEASE



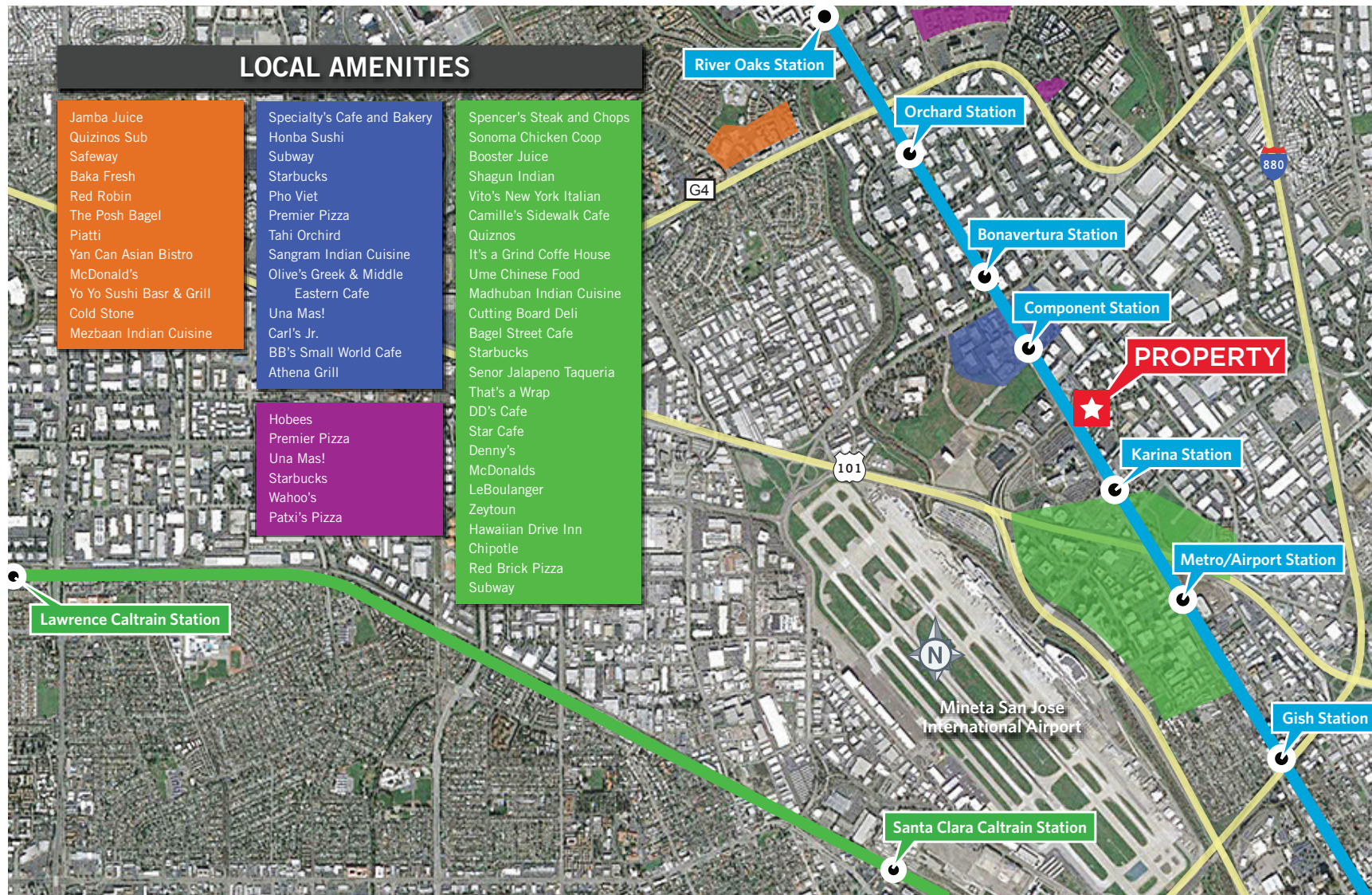
- |   |                          |
|---|--------------------------|
| ◆ Planned BART station                        | — Planned BART Extension |
| ○ Existing and Future VTA Light Rail Stations | - - - VTA Light Rail     |
| ■ Caltrain Station                            | - - - Caltrain           |



# 2290 N. FIRST STREET SAN JOSE, CALIFORNIA

±762 SF - ±9,208 SF | OFFICES FOR LEASE

## AMENITIES MAP





±762 SF - ±9,208 SF | OFFICES FOR LEASE  
**2290 N. FIRST STREET**  
SAN JOSE, CALIFORNIA

**FOR MORE INFORMATION, CONTACT:**

**JON DECOITE | Managing Director** | P +1 408 615 3408 | [jon.decoite@cushwake.com](mailto:jon.decoite@cushwake.com) | LIC #01471300

**MIKE BAKER | Senior Director** | P +1 408 615 3406 | [mike.baker@cushwake.com](mailto:mike.baker@cushwake.com) | LIC #01884037

©2025 Cushman & Wakefield. All rights reserved. The information contained in this communication is strictly confidential. This information has been obtained from sources believed to be reliable but has not been verified. NO WARRANTY OR REPRESENTATION, EXPRESS OR IMPLIED, IS MADE AS TO THE CONDITION OF THE PROPERTY (OR PROPERTIES) REFERENCED HEREIN OR AS TO THE ACCURACY OR COMPLETENESS OF THE INFORMATION CONTAINED HEREIN, AND SAME IS SUBMITTED SUBJECT TO ERRORS, OMISSIONS, CHANGE OF PRICE, RENTAL OR OTHER CONDITIONS, WITHDRAWAL WITHOUT NOTICE, AND TO ANY SPECIAL LISTING CONDITIONS IMPOSED BY THE PROPERTY OWNER(S). ANY PROJECTIONS, OPINIONS OR ESTIMATES ARE SUBJECT TO UNCERTAINTY AND DO NOT SIGNIFY CURRENT OR FUTURE PROPERTY PERFORMANCE.



**CUSHMAN &  
WAKEFIELD**



**HARVEST  
PROPERTIES**