



**SUBLEASE**  
SOUTH SAN FRANCISCO

**CLASS 'A' OFFICE/LAB SPACE AVAILABLE**

# 2 TOWER PLACE

18<sup>TH</sup>, 19<sup>TH</sup> & 20<sup>TH</sup> FLOORS

±58,446 SF **DIVISIBLE BY FLOOR**



**CUSHMAN &  
WAKEFIELD**



# SUBLEASE

SOUTH SAN FRANCISCO

±58,446 SF **DIVISIBLE BY FLOOR**

CLASS 'A' OFFICE/LAB SPACE AVAILABLE

# 2 TOWER PLACE

18<sup>TH</sup>, 19<sup>TH</sup> & 20<sup>TH</sup> FLOORS



## KEY HIGHLIGHTS



Existing Lab in Place



Fitness/Wellness Center



230 Person Capacity Performing Arts Center



On-Site Gourmet Restaurant, Bakery,  
On-Site Meeting/Event Space



Patio/Outdoor Lounge



7-Story Parking Structure



24/7 On-Guard Security



Shuttle Services to BART,  
Caltrain and Ferry

## SUBLEASE DETAILS



Available Space: Floors 18, 19, 20  
±19,482 SF each



Term: **LED: April 30, 2030**  
(Will consider shorter term)



Availability: **Now**



Parking: **3.0/1,000**

## CONTACT INFO

**Mark Moser**  
650 619 9446  
mark.moser@cushwake.com  
LIC # 01052881



**SUBLEASE**  
SOUTH SAN FRANCISCO

±58,446 SF **DIVISIBLE BY FLOOR**

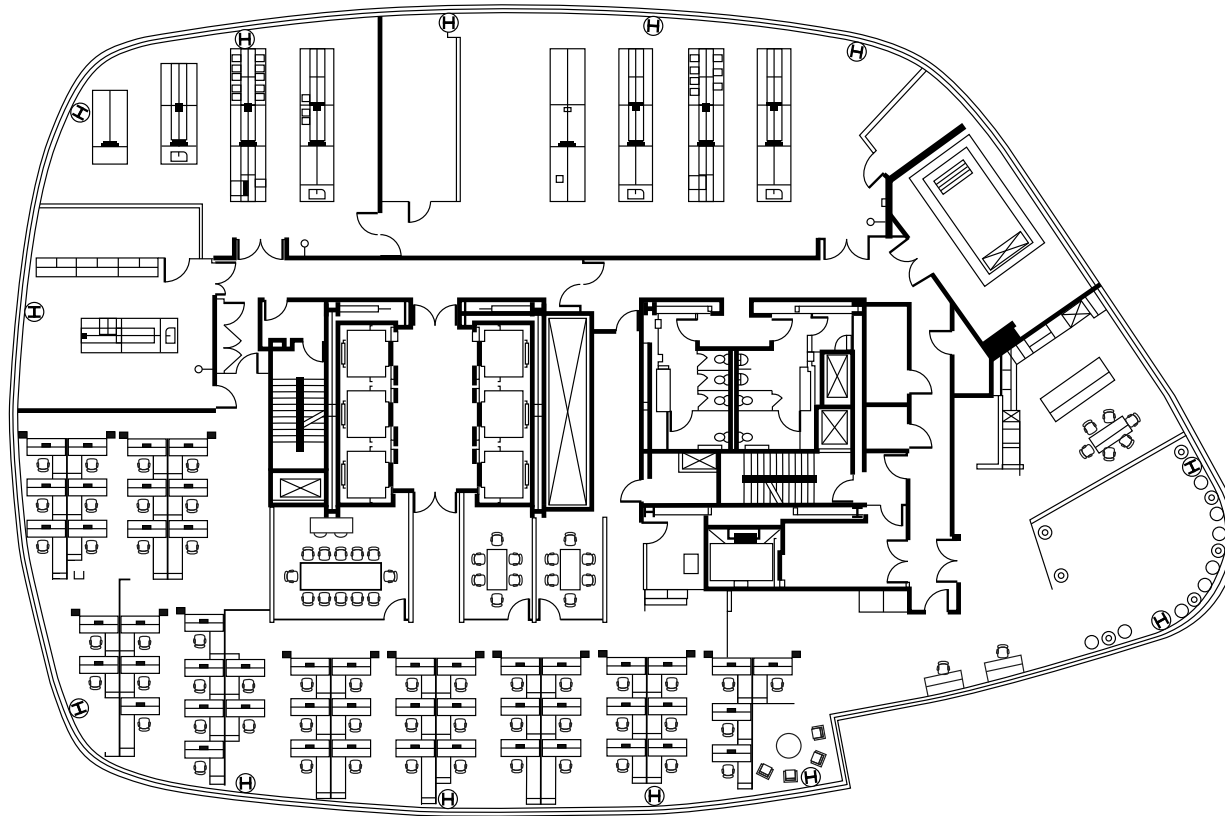
CLASS 'A' OFFICE/LAB SPACE AVAILABLE

**2** TOWER PLACE  
18<sup>TH</sup>, 19<sup>TH</sup> & 20<sup>TH</sup> FLOORS

**18<sup>TH</sup> FLOOR**

±19,482 SF

Available February 2027 for  
Potential Expansion



**CONTACT INFO**

**Mark Moser**  
650 619 9446  
mark.moser@cushwake.com  
LIC # 01052881



**SUBLEASE**  
SOUTH SAN FRANCISCO

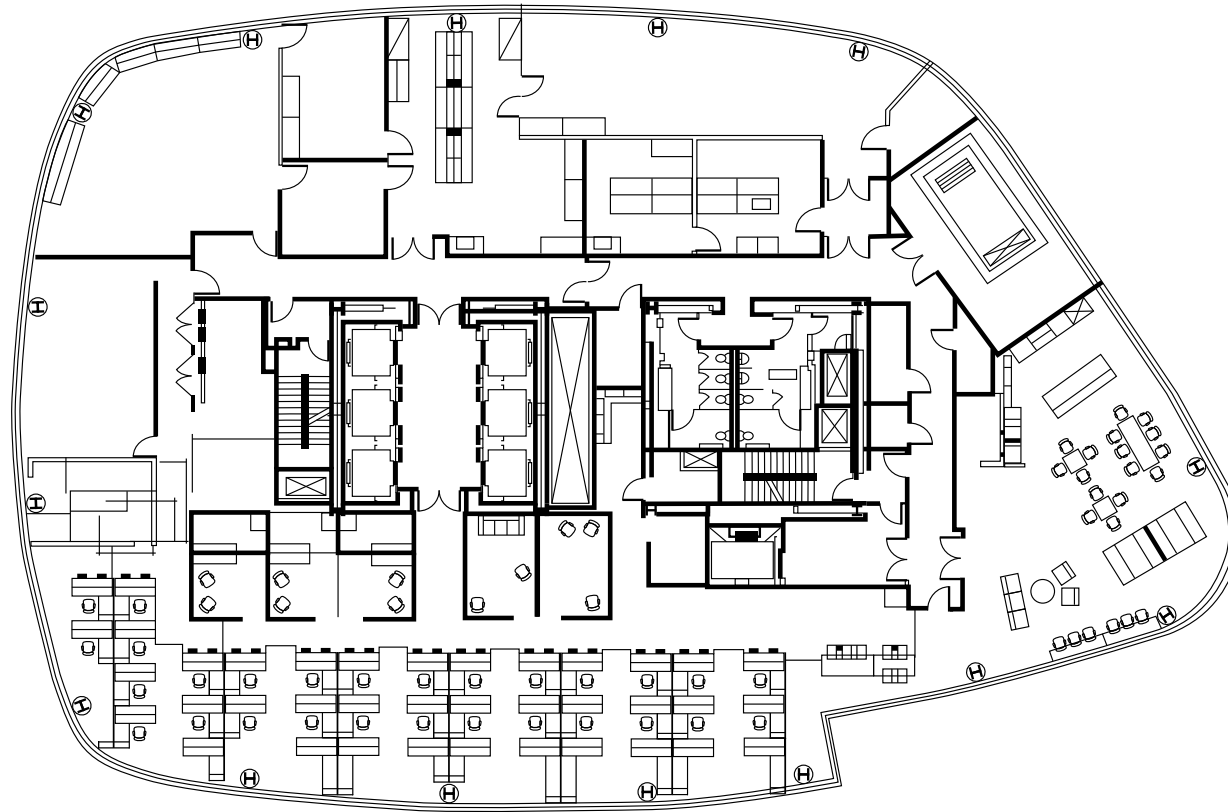
±58,446 SF **DIVISIBLE BY FLOOR**

CLASS 'A' OFFICE/LAB SPACE AVAILABLE

**2** TOWER PLACE  
18<sup>TH</sup>, 19<sup>TH</sup> & 20<sup>TH</sup> FLOORS

## 19<sup>TH</sup> FLOOR

±19,482 SF



### CONTACT INFO

**Mark Moser**  
650 619 9446  
mark.moser@cushwake.com  
LIC # 01052881



**SUBLEASE**  
SOUTH SAN FRANCISCO

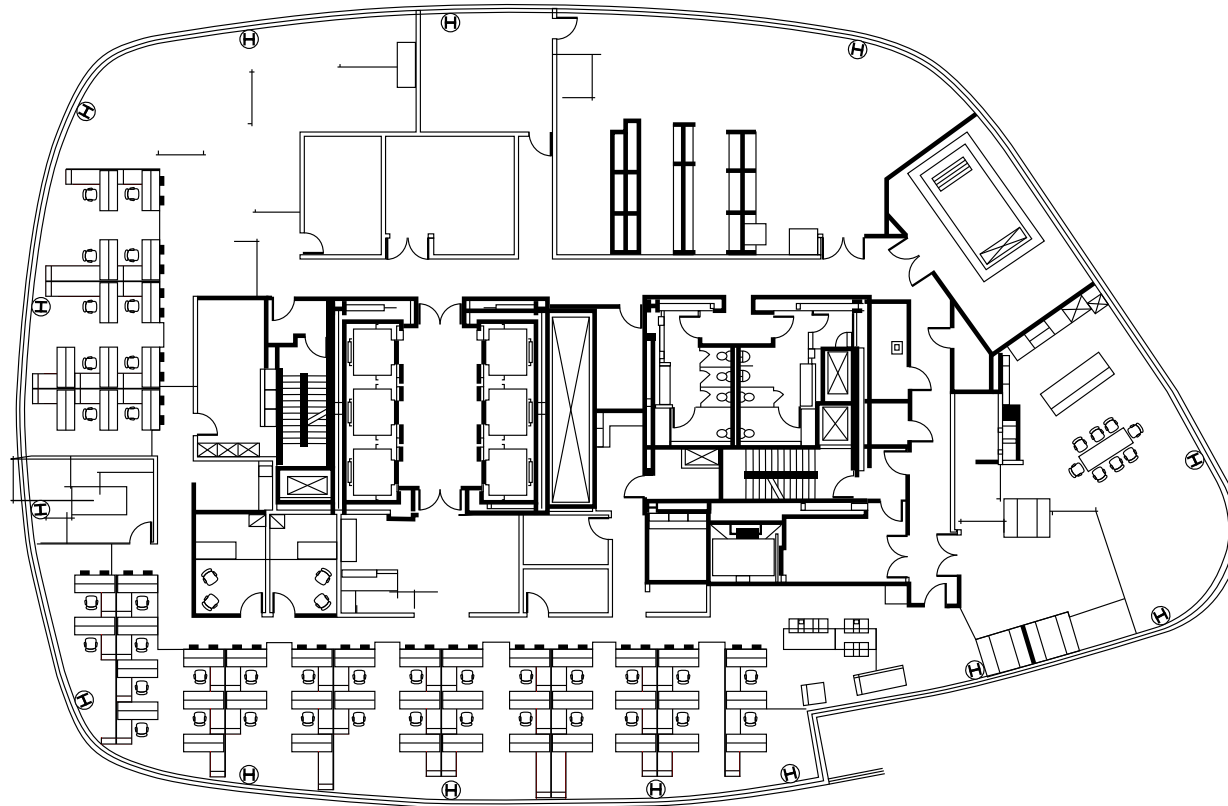
±58,446 SF **DIVISIBLE BY FLOOR**

CLASS 'A' OFFICE/LAB SPACE AVAILABLE

**2** TOWER PLACE  
18<sup>TH</sup>, 19<sup>TH</sup> & 20<sup>TH</sup> FLOORS

## 20<sup>TH</sup> FLOOR

±19,482 SF



### CONTACT INFO

**Mark Moser**  
650 619 9446  
mark.moser@cushwake.com  
LIC # 01052881





# SUBLEASE

SOUTH SAN FRANCISCO

±58,446 SF DIVISIBLE BY FLOOR

CLASS 'A' OFFICE/LAB SPACE AVAILABLE

# 2 TOWER PLACE

18<sup>TH</sup>, 19<sup>TH</sup> & 20<sup>TH</sup> FLOORS

## Local Amenities

### RESTAURANTS

- 1 GENESIS Kitchen & Drinks
- 2 Focaccia Market & Bakery
- 3 Little Green Cyclo
- 4 Foundry & Lux
- 5 Specialty's Café & Bakery
- 6 Darby Dan's Gourmet Sandwiches
- 7 Bertolucci's
- 8 Antigua Coffee Shop
- 9 Ben Tre Vietnamese Homestyle Cuisine
- 10 El Farolito Taqueria
- 11 Di Napoli Pizzeria
- 12 Buon Gusto
- 13 Peet's Coffee & Tea
- 14 Two Fifty Restaurant
- 15 Villa Del Sol Argentinian Restaurant
- 16 La Tapatia Mexicatessen
- 17 Grand Palace
- 18 Starbucks
- 19 Thai Satay
- 20 Big Belly Deli
- 21 Basque Cultural Center

### BANKS

- 1 Bank of America
- 2 Wells Fargo Bank
- 3 US Bank

### HOTELS

- 1 DoubleTree by Hilton
- 2 Homewood Suites by Hilton
- 3 Residence Inn by Marriott
- 4 Courtyard by Marriott

- 3 AC Hotel by Marriott
- 4 Larkspur Landing Hotel
- 5 Hilton Garden Inn
- 6 Embassy Suites
- 7 Four Points by Sheraton

### RECREATION

- 1 SSF Ferry Terminal
- 2 Marina
- 3 Park Sierra Point
- 4 Oyster Point Park
- 5 Bay Trail - - -



## CONTACT INFO

**Mark Moser**  
650 619 9446  
mark.moser@cushwake.com  
LIC # 01052881





CLASS 'A' OFFICE/LAB SPACE AVAILABLE

# 2 TOWER PLACE

18<sup>TH</sup>, 19<sup>TH</sup> & 20<sup>TH</sup> FLOORS

±58,446 SF **DIVISIBLE BY FLOOR**

## CONTACT INFO

**Mark Moser**

650 619 9446

[mark.moser@cushwake.com](mailto:mark.moser@cushwake.com)

LIC # 01052881



©2024 Cushman & Wakefield. All rights reserved. The information contained in this communication is strictly confidential. This information has been obtained from sources believed to be reliable but has not been verified. NO WARRANTY OR REPRESENTATION, EXPRESS OR IMPLIED, IS MADE AS TO THE CONDITION OF THE PROPERTY (OR PROPERTIES) REFERENCED HEREIN OR AS TO THE ACCURACY OR COMPLETENESS OF THE INFORMATION CONTAINED HEREIN, AND SAME IS SUBMITTED SUBJECT TO ERRORS, OMISSIONS, CHANGE OF PRICE, RENTAL OR OTHER CONDITIONS, WITHDRAWAL WITHOUT NOTICE, AND TO ANY SPECIAL LISTING CONDITIONS IMPOSED BY THE PROPERTY OWNER(S). ANY PROJECTIONS, OPINIONS OR ESTIMATES ARE SUBJECT TO UNCERTAINTY AND DO NOT SIGNIFY CURRENT OR FUTURE PROPERTY PERFORMANCE. COE-PM-West-05.6.2024

