

—ANAHEIM— CITY CENTRE

222 S. Harbor Boulevard
Anaheim, CA 92805



10-STORY | 194,892 SF CLASS A OFFICE
AVAILABLE FOR LEASE



[VIEW WEBSITE](#)



[VIEW VIDEO](#)



**CUSHMAN &
WAKEFIELD**



**HARBOR
ASSOCIATES**

FIND YOUR PLACE AT ANAHEIM CITY CENTRE



- **194,892 SF** - 10-Story Class A Office Highrise
- **Move-in Ready Suites available from 1,500 SF**



Extensive glass lines and rose-colored granite facade



On-site property management and security guard



4/1,000: Parking structure adjacent to building



Storage units available from 150 - 220 SF



Amazing views of historic downtown Anaheim area



Located at the intersection of South Harbor Boulevard & West Broadway, east of the 5 and south of the 91



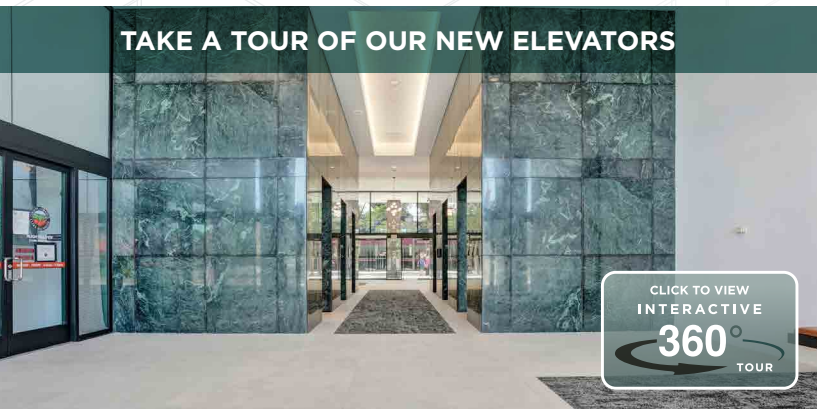
Urban re-development area with new residential within walking distance

TAKE A TOUR OF OUR NEW LOBBY



CLICK TO VIEW
INTERACTIVE
360°
TOUR

TAKE A TOUR OF OUR NEW ELEVATORS



CLICK TO VIEW
INTERACTIVE
360°
TOUR

A GATEWAY TO ENDLESS ADVENTURES



EXPLORE

- Center Street Promenade: Anaheim's award-winning restaurants, artisan shops, Muzeo Museum, Carnegie Library and City Hall
- Anaheim Packing House - OC's original food hall with 30+ eateries and 4 breweries
- 10 Minutes from Disneyland, Anaheim Convention Center, Angel Stadium, Honda Center, and the future OCVIBE



TRAVEL

- Easy access to Anaheim Regional Transportation Intermodal Center (ARTIC)
- FRAN (Free Rides Around the Neighborhood): the on-demand, free, electric vehicle micro-transit system in downtown Anaheim
- 17 Min to John Wayne Airport

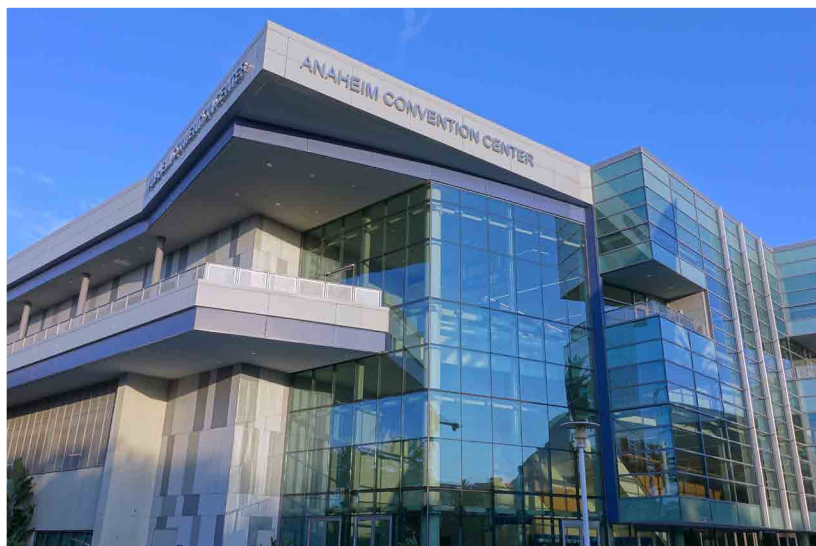
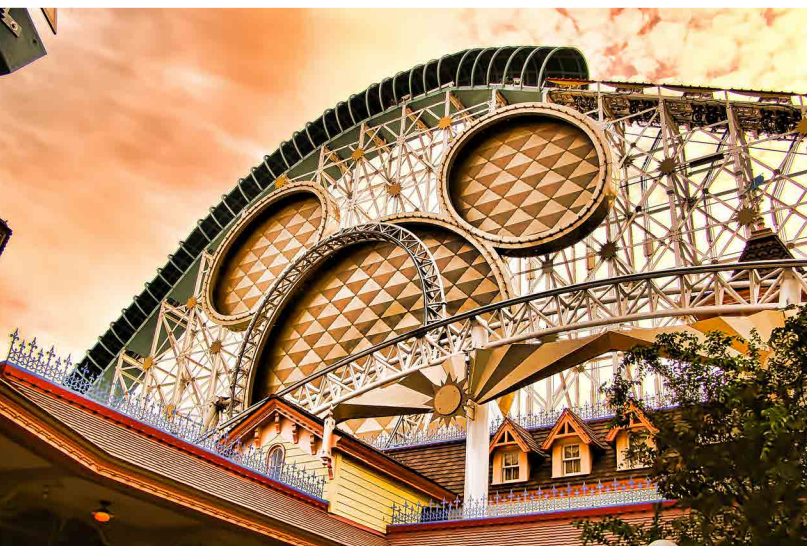


LIVE

- Downtown Anaheim's revitalization project has added 4,900 new homes and apartments, with more than 2,800 planned and under construction



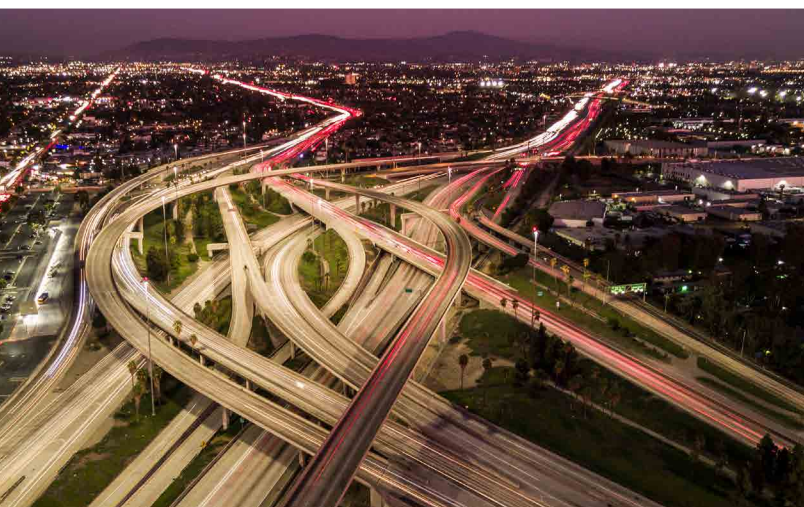
CONNECT. COLLABORATE. CHEER!



ANAHEIM CITY CENTRE

DRIVE TIMES

JOHN WAYNE AIRPORT	17 Mins 13.1 Miles
LOS ANGELES	30 Mins 20.7 Miles
INLAND EMPIRE	22 Mins 17.9 Miles
NEWPORT BEACH	20 Mins 17.1 Miles
ANGEL STADIUM	10 Mins 3.9 Miles



AVAILABILITIES

SUITE	SIZE (RSF)	CONTIGUOUS (RSF)	DETAILS	VIRTUAL LINK
500/510/555	11,771	13,618	Available 1/1/26. Features 12 offices, 3 conference rooms, reception, IT, storage and break room	360
515	1,847		Available 1/1/26. Features 2 offices and open kitchen	
820	1,636		Features 2 offices, conference room, storage room and open kitchen area	360
900	14,248		Available 6/1/26. Features 14 offices, 4 conference rooms, IT, 2 workrooms, kitchen and wellness room	360



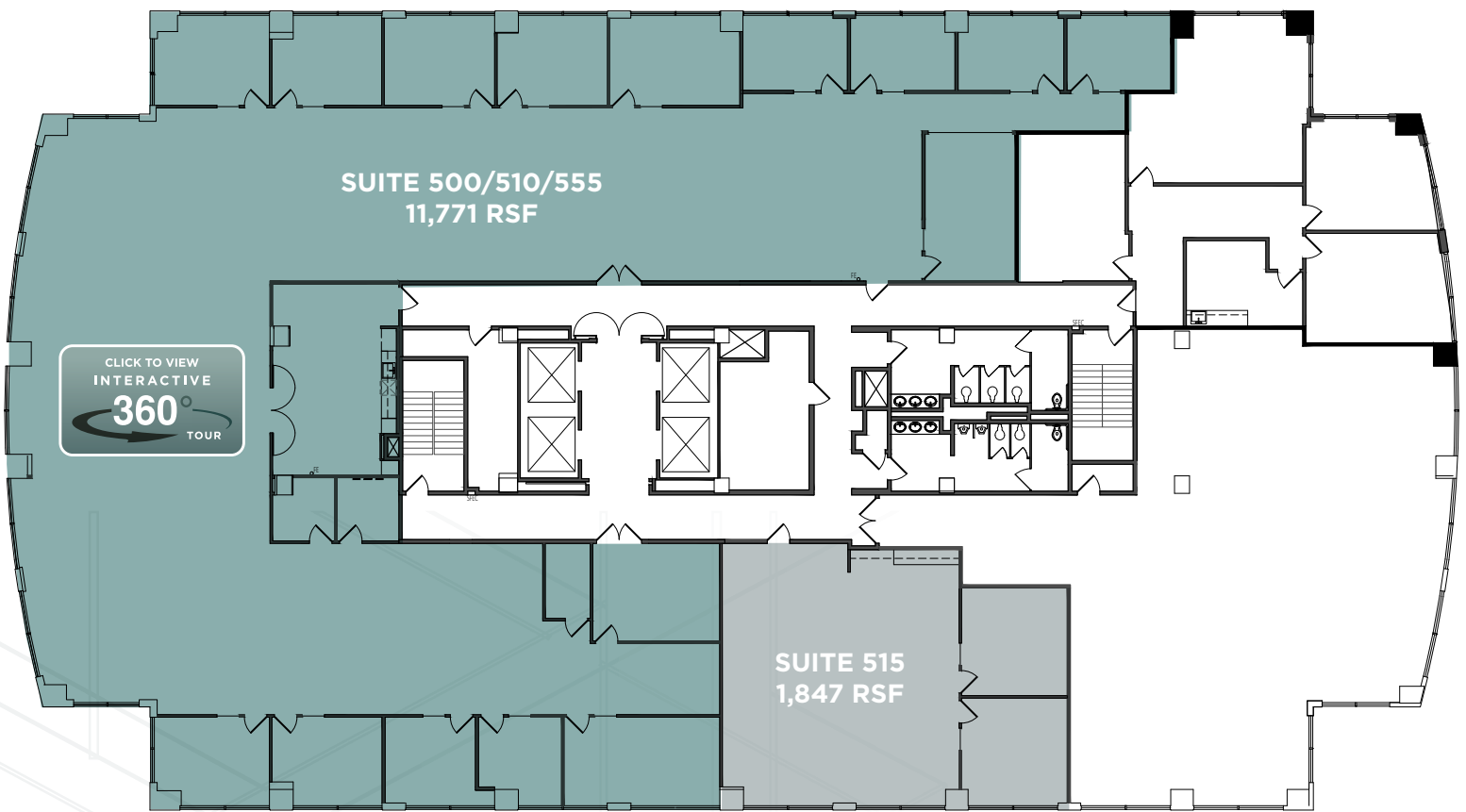
FLOOR PLANS

5TH FLOOR

SUITE 500/510/555 | 11,771 RSF

SUITE 515 | 1,847 RSF

CONTIGUOUS 13,618 RSF



ANAHEIM CITY CENTRE | 222 S. HARBOR BOULEVARD, ANAHEIM, CA 92805 | WWW.ANAHEIMCITYCENTRE.COM

JOHN HARTY

+1 949 372 4910

john.harty@cushwake.com

Lic. #01121203

JASON WARD

+1 949 955 7640

jason.ward@cushwake.com

Lic. #01802243

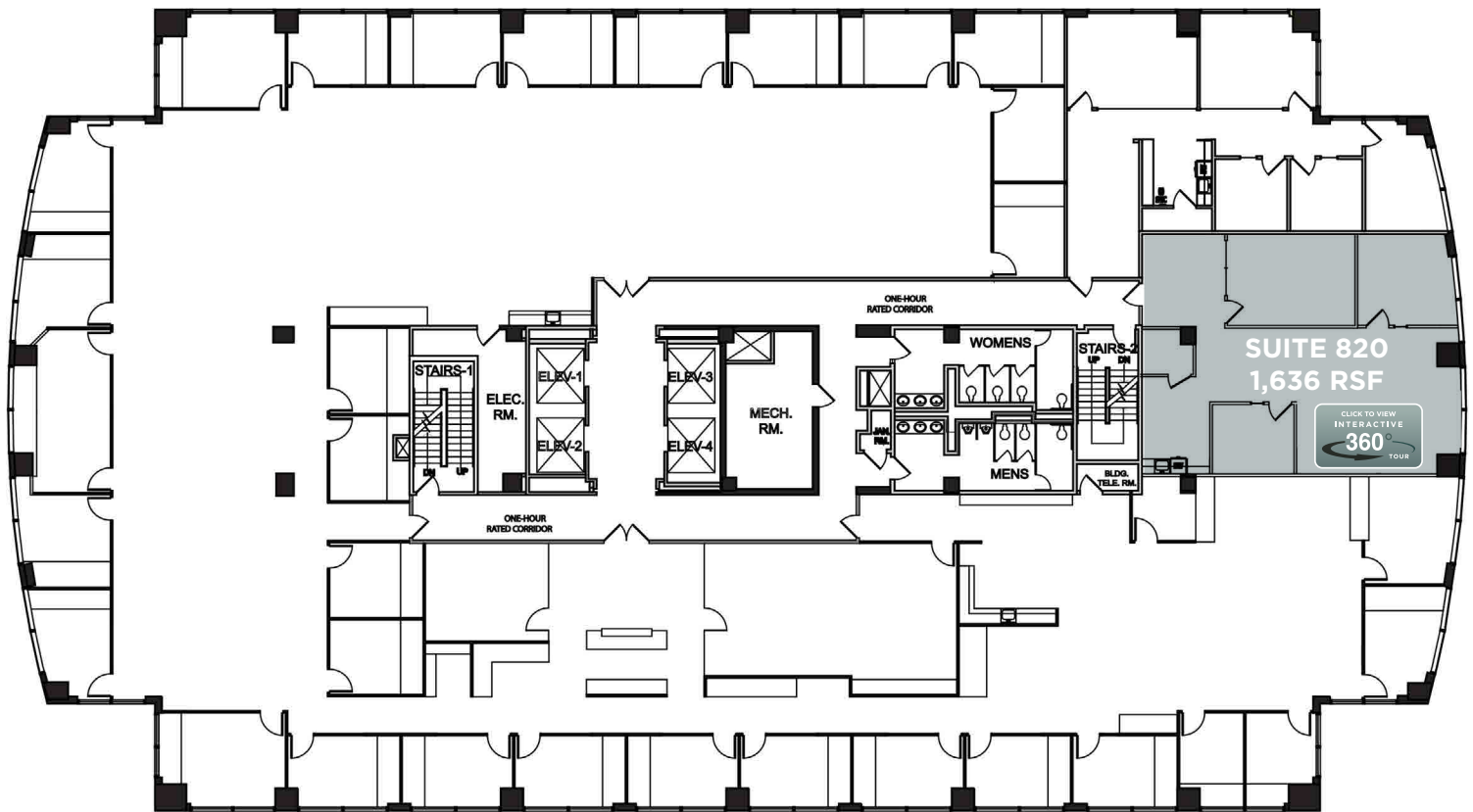


©2025 Cushman & Wakefield. All rights reserved. The information contained in this communication is strictly confidential. This information has been obtained from sources believed to be reliable but has not been verified. NO WARRANTY OR REPRESENTATION, EXPRESS OR IMPLIED, IS MADE AS TO THE CONDITION OF THE PROPERTY (OR PROPERTIES) REFERENCED HEREIN OR AS TO THE ACCURACY OR COMPLETENESS OF THE INFORMATION CONTAINED HEREIN, AND SAME IS SUBMITTED SUBJECT TO ERRORS, OMISSIONS, CHANGE OF PRICE, RENTAL OR OTHER CONDITIONS, WITHDRAWAL WITHOUT NOTICE, AND TO ANY SPECIAL LISTING CONDITIONS IMPOSED BY THE PROPERTY OWNER(S). ANY PROJECTIONS, OPINIONS OR ESTIMATES ARE SUBJECT TO UNCERTAINTY AND DO NOT SIGNIFY CURRENT OR FUTURE PROPERTY PERFORMANCE.

FLOOR PLANS

8TH FLOOR

SUITE 820 | 1,636 RSF



ANAHEIM CITY CENTRE | 222 S. HARBOR BOULEVARD, ANAHEIM, CA 92805 | WWW.ANAHEIMCITYCENTRE.COM

JOHN HARTY

+1 949 372 4910

john.harty@cushwake.com

Lic. #01121203

JASON WARD

+1 949 955 7640

jason.ward@cushwake.com

Lic. #01802243

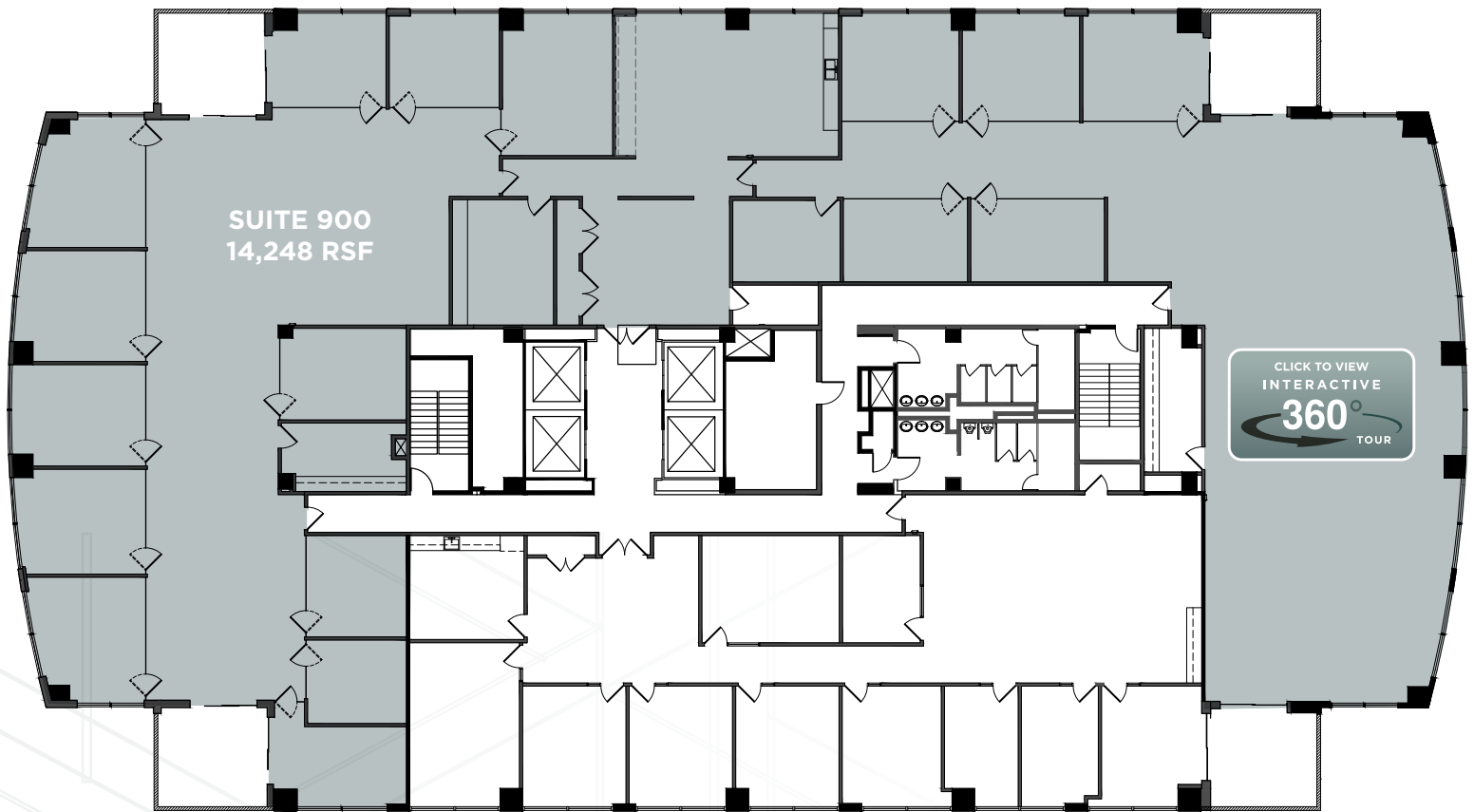


©2025 Cushman & Wakefield. All rights reserved. The information contained in this communication is strictly confidential. This information has been obtained from sources believed to be reliable but has not been verified. NO WARRANTY OR REPRESENTATION, EXPRESS OR IMPLIED, IS MADE AS TO THE CONDITION OF THE PROPERTY (OR PROPERTIES) REFERENCED HEREIN OR AS TO THE ACCURACY OR COMPLETENESS OF THE INFORMATION CONTAINED HEREIN, AND SAME IS SUBMITTED SUBJECT TO ERRORS, OMISSIONS, CHANGE OF PRICE, RENTAL OR OTHER CONDITIONS, WITHDRAWAL WITHOUT NOTICE, AND TO ANY SPECIAL LISTING CONDITIONS IMPOSED BY THE PROPERTY OWNER(S). ANY PROJECTIONS, OPINIONS OR ESTIMATES ARE SUBJECT TO UNCERTAINTY AND DO NOT SIGNIFY CURRENT OR FUTURE PROPERTY PERFORMANCE.

FLOOR PLANS

9TH FLOOR

SUITE 900 | 14,248 RSF



ANAHEIM CITY CENTRE | 222 S. HARBOR BOULEVARD, ANAHEIM, CA 92805 | WWW.ANAHEIMCITYCENTRE.COM

JOHN HARTY

+1 949 372 4910

john.harty@cushwake.com

Lic. #01121203

JASON WARD

+1 949 955 7640

jason.ward@cushwake.com

Lic. #01802243



©2025 Cushman & Wakefield. All rights reserved. The information contained in this communication is strictly confidential. This information has been obtained from sources believed to be reliable but has not been verified. NO WARRANTY OR REPRESENTATION, EXPRESS OR IMPLIED, IS MADE AS TO THE CONDITION OF THE PROPERTY (OR PROPERTIES) REFERENCED HEREIN OR AS TO THE ACCURACY OR COMPLETENESS OF THE INFORMATION CONTAINED HEREIN, AND SAME IS SUBMITTED SUBJECT TO ERRORS, OMISSIONS, CHANGE OF PRICE, RENTAL OR OTHER CONDITIONS, WITHDRAWAL WITHOUT NOTICE, AND TO ANY SPECIAL LISTING CONDITIONS IMPOSED BY THE PROPERTY OWNER(S). ANY PROJECTIONS, OPINIONS OR ESTIMATES ARE SUBJECT TO UNCERTAINTY AND DO NOT SIGNIFY CURRENT OR FUTURE PROPERTY PERFORMANCE.