

BE WHERE THE ENERGY IS

MARKET

425

STREET

IN THE HEART OF SAN FRANCISCO

CLASS A OFFICE SPACE FOR LEASE

EMPOWERING YOUR FUTURE

Welcome to 425 Market, where a transformational project is underway that will offer an unrivaled workplace experience in the heart of the Financial District. With spaces that enable productivity and facilitate collaboration, 425 Market is the ideal setting for the new nature of work.

MARKET
425
STREET



PROPERTY HIGHLIGHTS



LEED PLATINUM
CERTIFIED & ENERGY
STAR RATED



INSTITUTIONAL
LONG-TERM
OWNERSHIP



ABUNDANT
ON-SITE
AMENITIES



PREMIER
MARKET ST.
LOCATION

IN THE HEART OF

38 STORIES

CLASS A OFFICE SPACE

±251,000 RSF

TOTAL AVAILABLE

±27,500 RSF

FLOOR PLATES

SAN FRANCISCO

PREMIUM

ONSITE



- FULL FLOOR AMENITY CENTER IN DEVELOPMENT
- MODERN TWO-SIDED LOBBY
- VALET PARKING
- RETAIL AMENITIES
- SHOWERS & LOCKERS
- BIKE STORAGE
- BARCHA RESTAURANT



SEITZ
AMENITIES

AVAILABILITY

HIGHLIGHTS

**CONTIGUOUS
FULL FLOORS**

**BRAND & IDENTITY
OPPORTUNITIES**

**DIVISIBLE
FULL FLOORS**

**CREATIVE BUILD-OUTS
AND OFFICE INTENSIVE
OPTIONS**



DOWNLOAD FLOOR PLANS

18TH FLOOR | 26,947 RSF | NOW
17TH FLOOR | 27,008 RSF | NOW

14TH FLOOR | 27,720 RSF | NOW
13TH FLOOR | 27,001 RSF | NOW
12TH FLOOR | 27,729 RSF | NOW

10TH FLOOR | 14,228 RSF | NOW
9TH FLOOR | 6,540 RSF | NOW
8TH FLOOR | 27,735 RSF | NOW

6TH FLOOR | 27,733 RSF | NOW
5TH FLOOR | 27,004 RSF | NOW
4TH FLOOR | 27,003 RSF | NOW
3RD FLOOR | 27,004 RSF | NOW

**NEW AMENITY FLOOR
COMING IN 2025**

FLOORS 3-6 ARE
CONTIGUOUS FOR ±100,000 SF

AMENITY CENTER

DELIVERING IN 2025



ADDITIONAL FEATURES

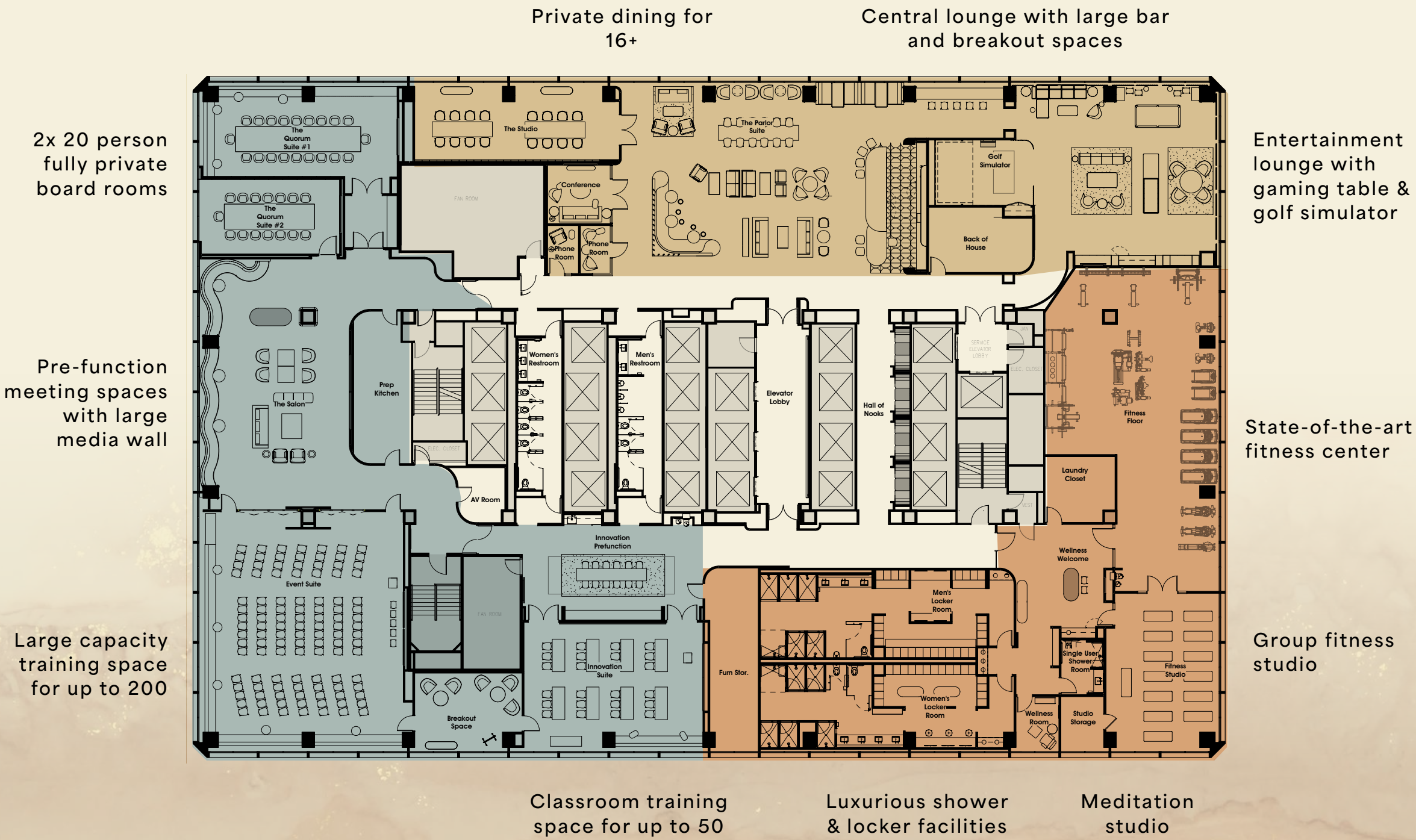
- Training room breakout spaces
- Two separate prep kitchens
- Semi-private work spaces throughout
- Multiple lounges designed for collaboration and focus work
- Dedicated greenroom for large events

DESIGN

FENNIE+MEHL
Architects

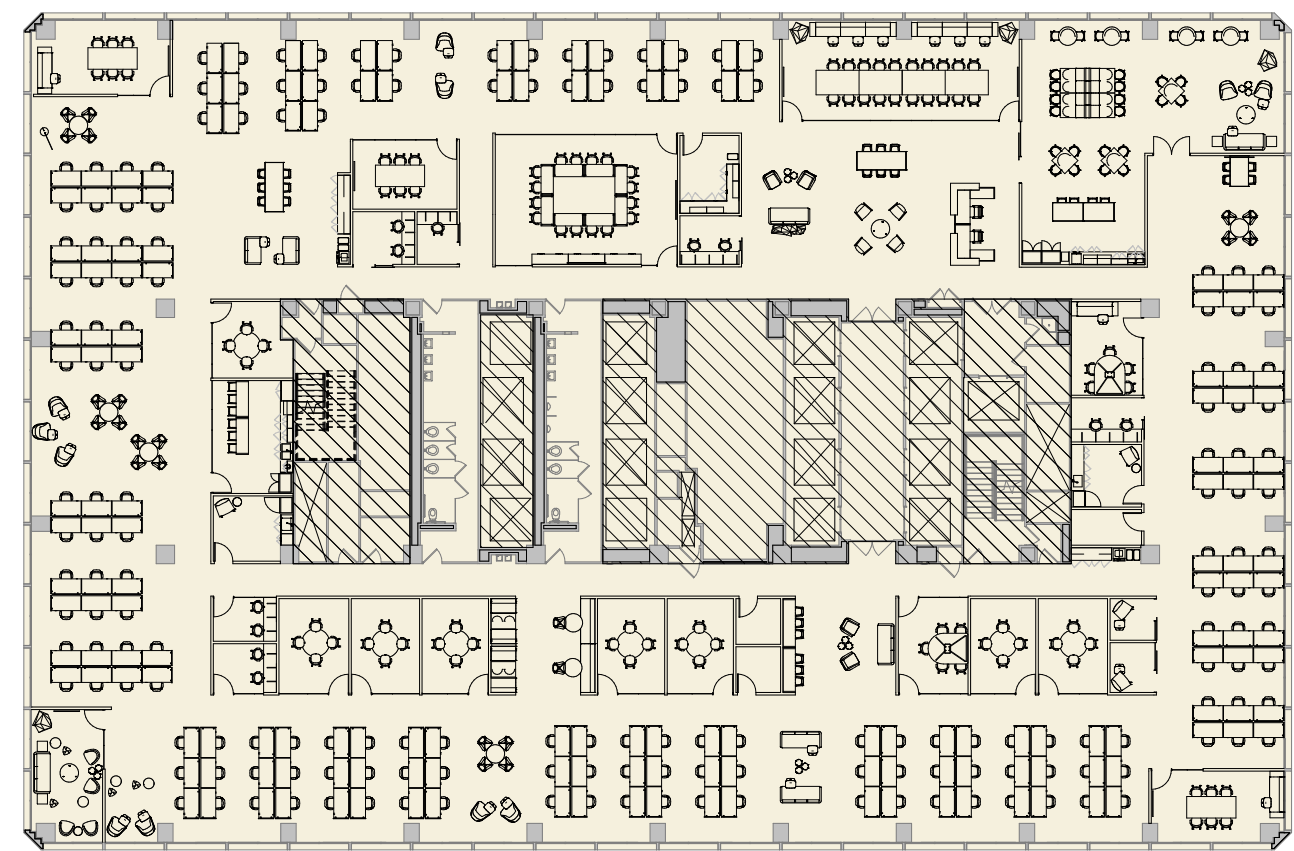
OPERATIONS + PROGRAMMING

lulafit



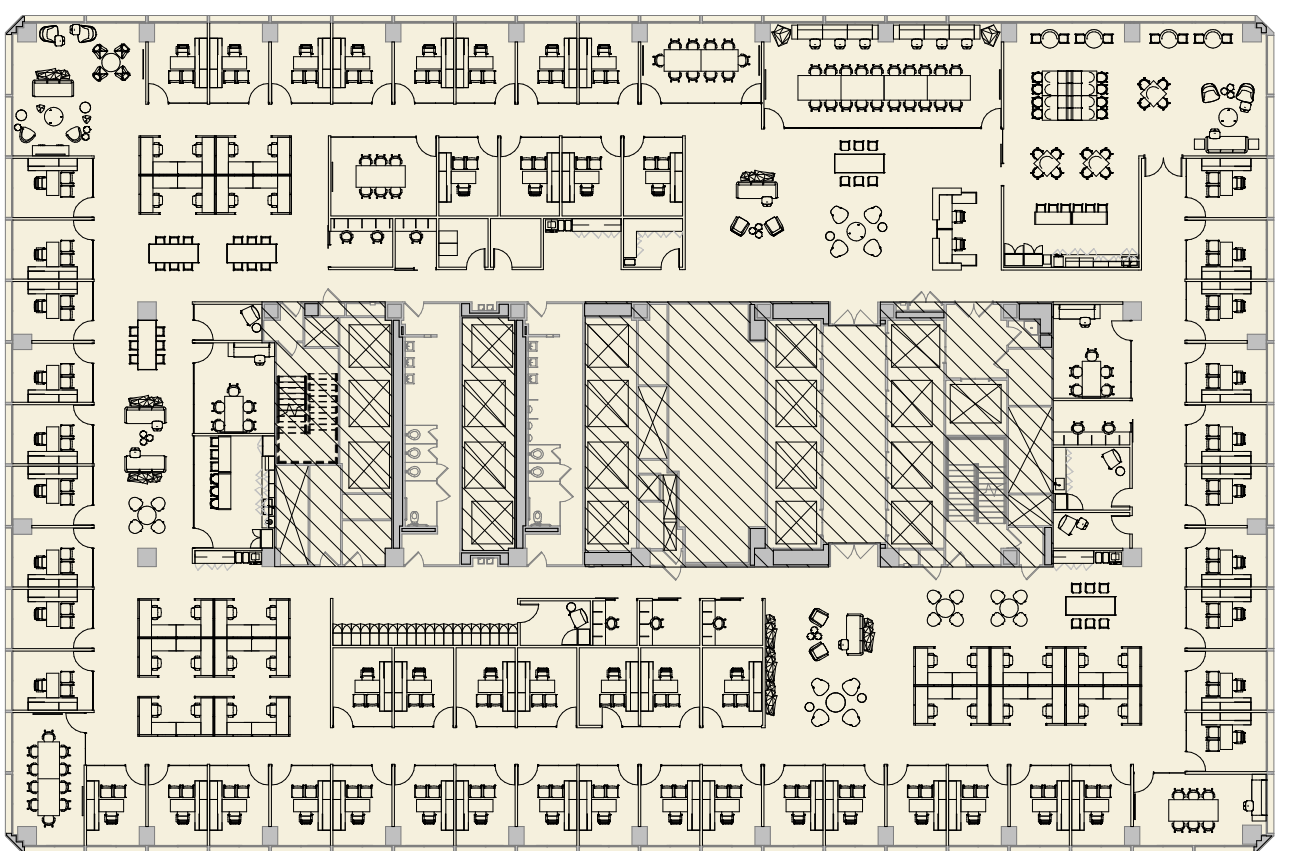
WORKPLACES TAILORED TO

YOUR VISION



HYPOTHETICAL OPEN PLAN

176 Open Office Seats	1 Boardroom	7 Huddle Rooms
4 Office/Huddle Rooms	3 Conference Rooms	2 Print Areas
2 Reception Seats	8 Focus Rooms	2 Mother's Rooms
1 Training Room		



HYPOTHETICAL OFFICE INTENSIVE PLAN

55 Closed Offices	1 Boardroom	2 Huddle Rooms
32 Open Office Seats	4 Conference Rooms	3 Print Areas
2 Reception Seats	7 Focus Rooms	2 Mother's Rooms

STEP INTO THE SPOTLIGHT

No matter how you choose to commute, 425 Market is easily accessible in the heart of the Financial District, with endless choices for retail and elevated dining.

1 min

WALK TO MUNI & BART STATIONS

5 min

WALK TO SALESFORCE TRANSIT CENTER

10 min

WALK TO FERRY TERMINAL





For More Information, Please Contact:

Zach Siegel
+1 415 773 3596
zach.siegel@cushwake.com
Lic. #01129196

Sam Wasserstein
+1 415 773 3528
sam.wasserstein@cushwake.com
Lic. #01798616

Brendon Kane
+1 415 677 0466
brendon.kane@cushwake.com
Lic. #01884552



©2024 Cushman & Wakefield. All rights reserved. This information contained in this communication is strictly confidential. This information has been obtained from sources believed to be reliable but has not been verified. NO WARRANTY OR REPRESENTATION, EXPRESS OR IMPLIED, IS MADE AS TO THE CONDITION OF THE PROPERTY (OR PROPERTIES) REFERENCED HEREIN OR AS TO THE ACCURACY OR COMPLETENESS OF THE INFORMATION CONTAINED HEREIN, AND SAME IS SUBMITTED SUBJECT TO ERRORS, OMISSIONS, CHANGE OF PRICE, RENTAL, OR OTHER CONDITIONS, WITHDRAWAL WITHOUT NOTICE, AND TO ANY SPECIAL LISTING CONDITIONS IMPOSED BY THE PROPERTY OWNER(S). ANY PROJECTIONS, OPINIONS OR ESTIMATES ARE SUBJECT TO UNCERTAINTY AND DO NOT SIGNIFY CURRENT OR FUTURE PROPERTY PERFORMANCE.