

FOR SUBLEASE | 100 WOOD HOLLOW DR, NOVATO CA



- Approx. 13,886 RSF
- \$1.50 Full Service
- Term through 05/31/2022
- Open floorplan with private offices
- Furniture available

Steven Leonard
Managing Director
Direct +1 415 451 2434
Mobile +1 415 722 1080
Steven.Leonard@cushwake.com
Lic #00909604

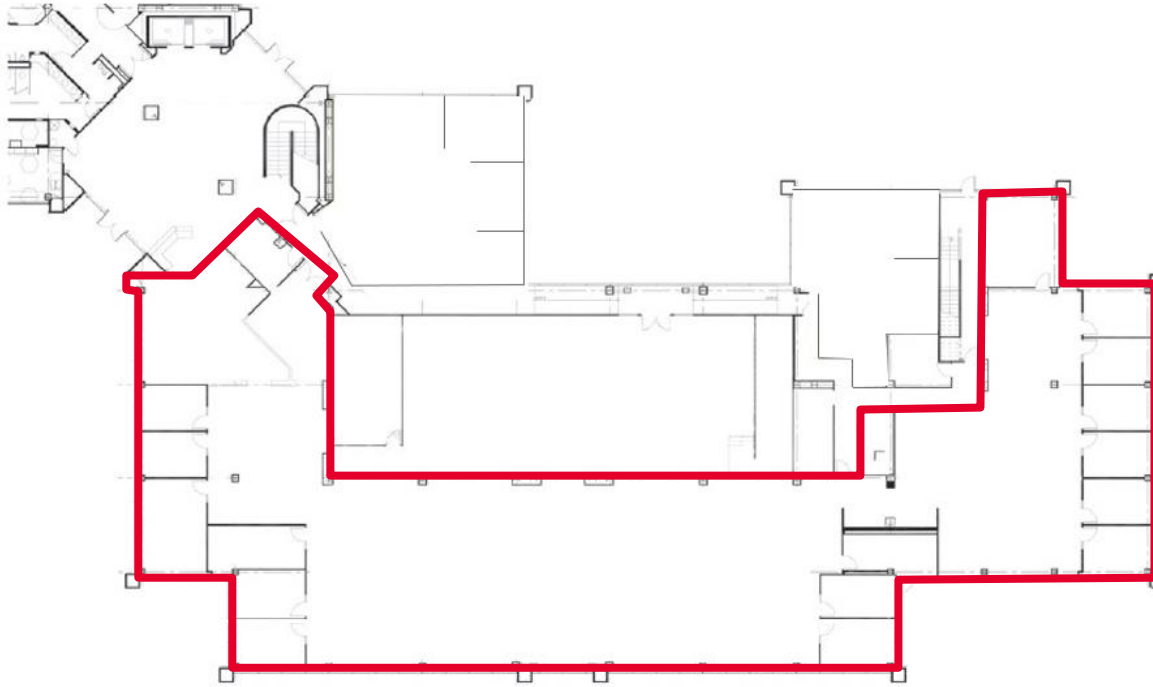
Erin Davies
Associate
Direct +1 415 451 2409
Mobile +1 415 827 6829
Erin.Davies@cushwake.com
Lic #02087500



HIGHLIGHTS

- Walking distance from SMART Train stop
- Professional grade bocce ball court and putting green
- Locker room with showers
- Newly renovated lobby and common area

FLOOR PLAN



- 1st floor suite located off the lobby
- 10 private offices, conference rooms, copy + mail room, open floor work stations, formal waiting area and reception
- Good exterior window line
- \$1.50 per RSF Full Service

**Steven Leonard**

Managing Director

Direct +1 415 451 2434

Mobile +1 415 722 1080

Steven.Leonard@cushwake.com

Lic #00909604

900 Larkspur Landing Cir
Suite 295, Larkspur, CA 94939
phone: +1 415 485 0500

Erin Davies

Associate

Direct +1 415 451 2409

Mobile +1 415 827 6829

Erin.Davies@cushwake.com

Lic #02087500



100 WOOD HOLLOW DR

- 10 minute walk from Novato – San Marin SMART station
- Easy access from San Marin/ Atherton freeway exit off Hwy 101
- Minutes from downtown Novato and central Redwood Blvd

Steven Leonard

Managing Director

Direct +1 415 451 2434

Mobile +1 415 722 1080

Steven.Leonard@cushwake.com

Lic #00909604

Erin Davies

Associate

Direct +1 415 451 2409

Mobile +1 415 827 6829

Erin.Davies@cushwake.com

Lic #02087500

900 Larkspur Landing Cir
Suite 295, Larkspur, CA 94939

phone: +1 415 485 0500

cushmanwakefield.com

