

1 Thorndale Drive, San Rafael



Class A Medical Space Available



Trevor Buck
Executive Managing Director
trevor.buck@cushwake.com
+1 415 451 2436
LIC #01255462

Whitney Strotz
Executive Managing Director
whitney.strotz@cushwake.com
+1 415 451 2406
LIC #01351397

Brian Foster
Executive Director
brian.foster@cushwake.com
+1 415 451 2437
LIC #01393059

BUILDING HIGHLIGHTS



BEST VIEWS IN
MARIN COUNTY



RENOVATED
COMMON AREAS



NEW HVAC
SYSTEM



EXTERIOR
GATHERING AREAS



COVERED AND
SECURE PARKING



BUILDING
SHOWERS



OPEN
FLOORPLAN AND
HIGH CEILINGS



LOADING CAPACITY
AVAILABLE



PRIVATE
TERRACE



RETRACTABLE
ROOF



COMMON AREA
ATRIUM WITH WIFI



1500 SF OF
SECURED STORAGE

**± 9,684 RSF
AVAILABLE**

**SUITE 100:
± 1,914 SF**

**SUITE 205:
± 3,743 SF**

**SUITE 310:
± 4,027 SF**

NEARBY AMENITIES



Rendering of new external elevator

TRANSPORTATION

- Close to SMART Train stop at Civic Center – Roughly 1.1 miles by walking.
- Less than 1 mile to 2 Marin Transit Bus Stops
- E Bikes Tenant Allowance Available
- Abundant Parking Including valet opportunity

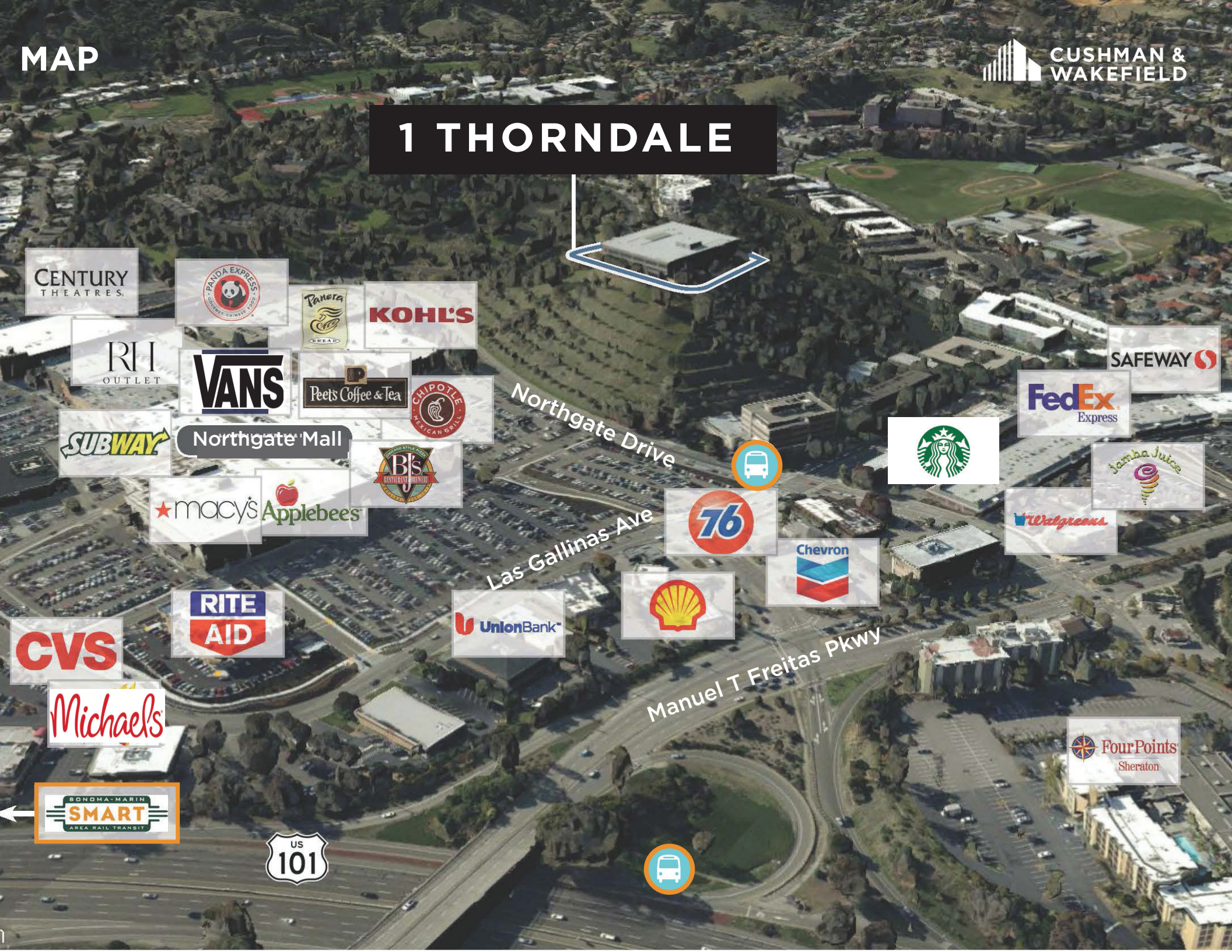
NORTHGATE MALL

- Home Goods
- Panera
- Chipotle
- Peet's Coffee
- Restoration hardware
- Rite Aid
- Century Theatres
- Black Bear Diner
- Wetzel's Pretzels
- Macy's
- BJ's Restaurant
- Lens Crafters
- Vans
- Claire's
- Bank of Marin
- Panda Express
- Kohl's
- Mi Pueblo

HEALTH + FITNESS

- Marin YMCA
- Osher Marin JCC
- China Camp State Park
- Flen Fire Road Trailhead
- Deer Park Trailhead
- Cascade Falls

1 THORNDALE



CENTURY
THEATRES.

PANDA EXPRESS

Panera
BREAD

KOHL'S

RH
OUTLET

VANS

Peet's Coffee & Tea

CHIPOTLE
MEXICAN GRILL

SUBWAY

Northgate Mall

★ macy's

Applebee's

BJ's
RESTAURANT & BREWERY

RITE
AID

CVS

Michaels

SONOMA-MARIN
SMART
AREA RAIL TRANSIT

US
101

Union Bank

SHELL

76

Chevron

Northgate Drive

Las Gallinas Ave

Manuel T Freitas Pkwy

SAFEWAY

FedEx
Express

Starbucks

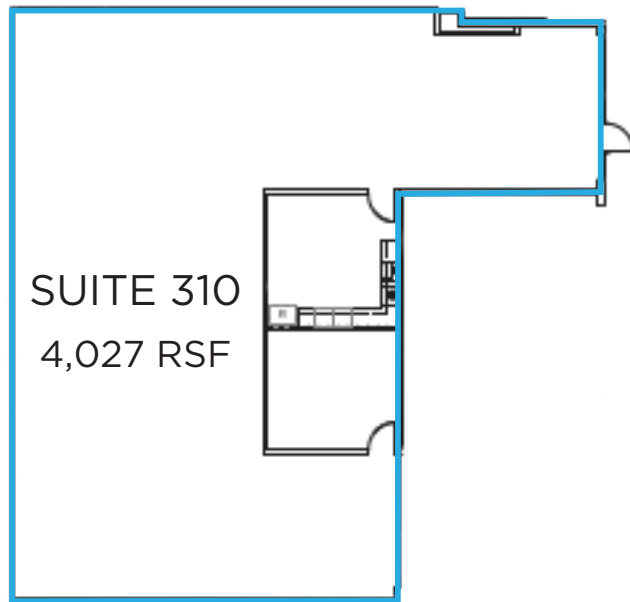
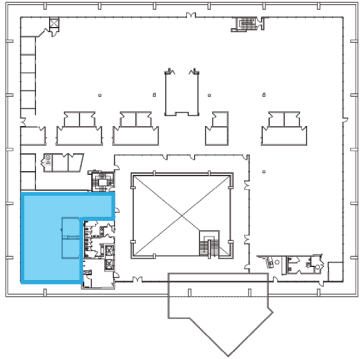
Jamba Juice

Walgreens

Four Points
Sheraton

SUITE 310

UPPER LEVEL FLOOR PLAN

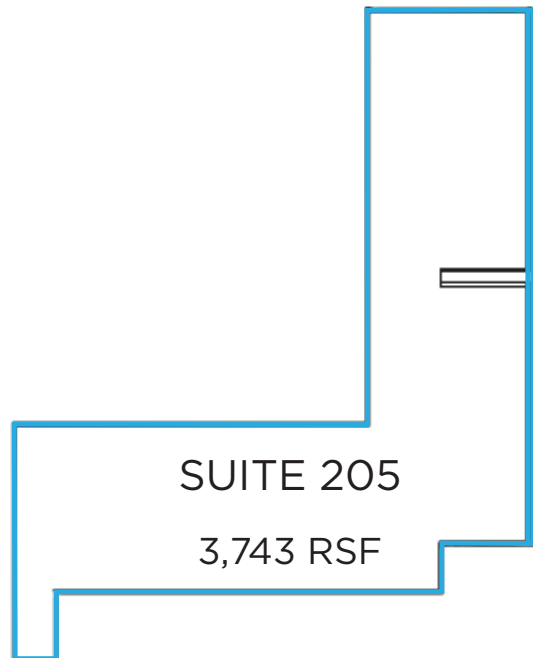
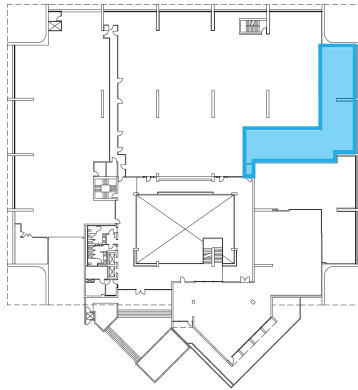


Trevor Buck
Executive Managing Director
trevor.buck@cushwake.com
+1 415 451 2436
LIC #01255462

Whitney Strotz
Executive Managing Director
whitney.strotz@cushwake.com
+1 415 451 2406
LIC #01351397

Brian Foster
Executive Director
brian.foster@cushwake.com
+1 415 451 2437
LIC #01393059

MID LEVEL FLOOR PLAN



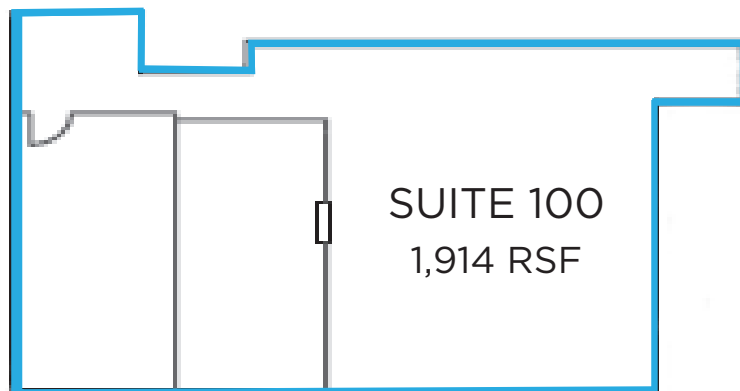
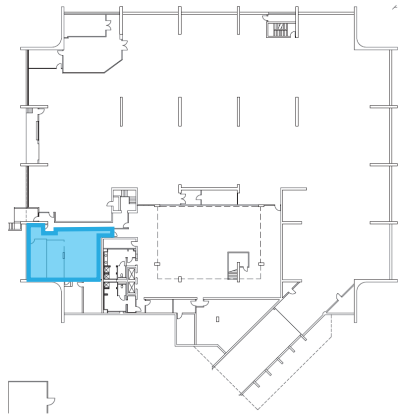
SUITE 205

3,743 RSF



SUITE 100

LOWER LEVEL FLOOR PLAN



1 Thorndale Drive, San Rafael



Class A Medical Space Available



Trevor Buck
Executive Managing Director
trevor.buck@cushwake.com
+1 415 451 2436
LIC #01255462

Whitney Strotz
Executive Managing Director
whitney.strotz@cushwake.com
+1 415 451 2406
LIC #01351397

Brian Foster
Executive Director
brian.foster@cushwake.com
+1 415 451 2437
LIC #01393059