



THE  
| B | A | L | D | W | I | N |  
OFFICES







*32,278 SF Available*

*\$15.75 /SF Net*

*+ \$12.51 /SF OpEx*

## Property Highlights

THE  
BALDWIN  
OFFICES

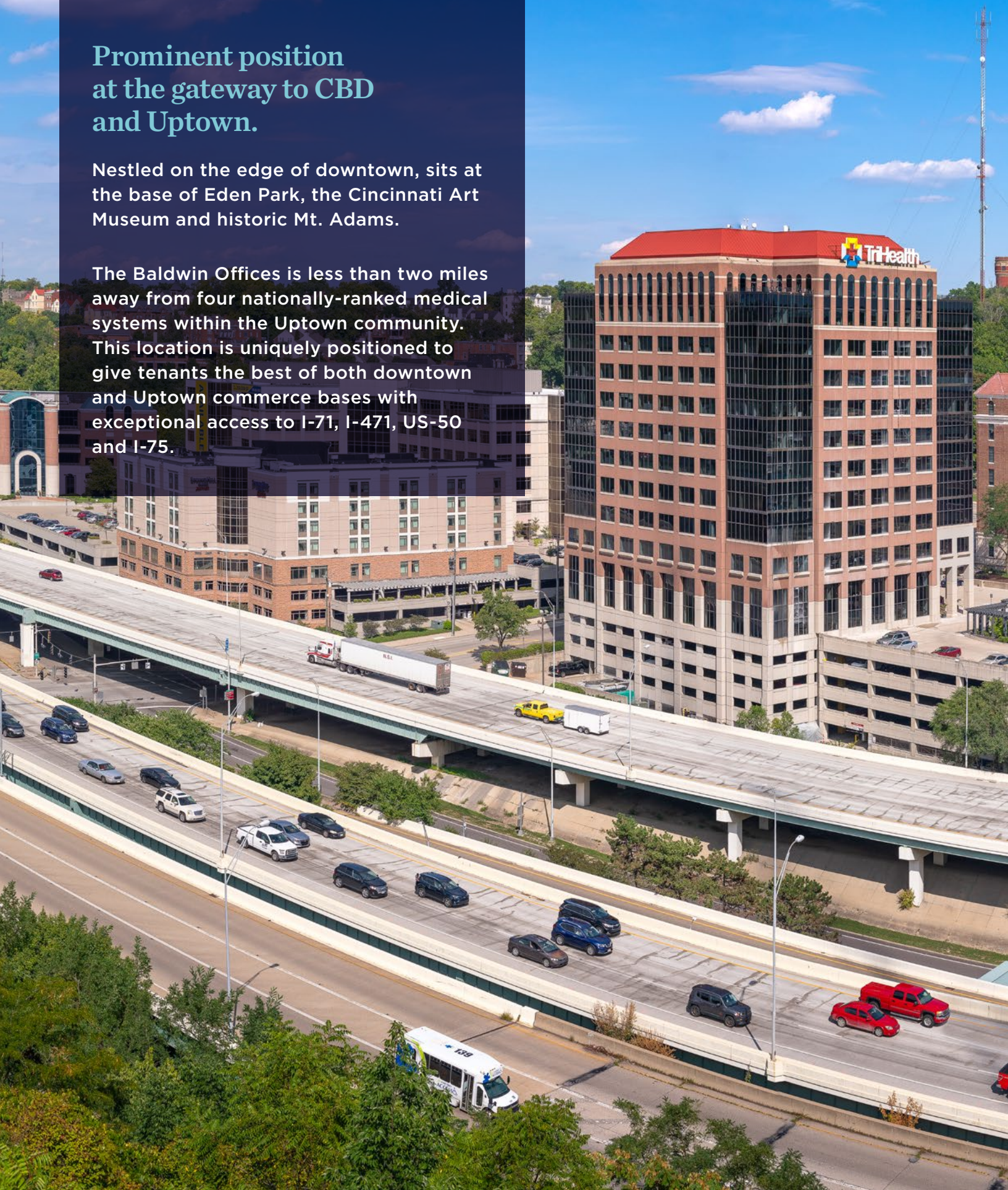
- 209,894 SF, 12-story office building
- Free visitor parking and free garage parking for tenants
- Extraordinary access to I-71, I-471, US-50 and I-75
- Blade signage opportunity
- On-site conference center
- On-site cafe featuring Starbucks and Boar's Head delicatessen serving breakfast & lunch
- On-site management team and security



## Prominent position at the gateway to CBD and Uptown.

Nestled on the edge of downtown, sits at the base of Eden Park, the Cincinnati Art Museum and historic Mt. Adams.

The Baldwin Offices is less than two miles away from four nationally-ranked medical systems within the Uptown community. This location is uniquely positioned to give tenants the best of both downtown and Uptown commerce bases with exceptional access to I-71, I-471, US-50 and I-75.

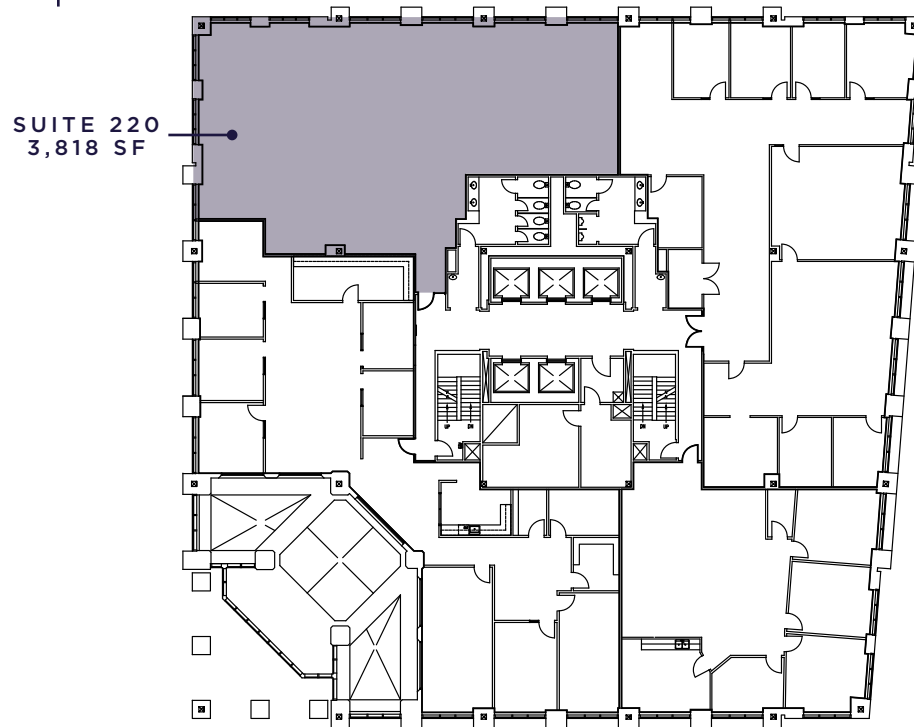




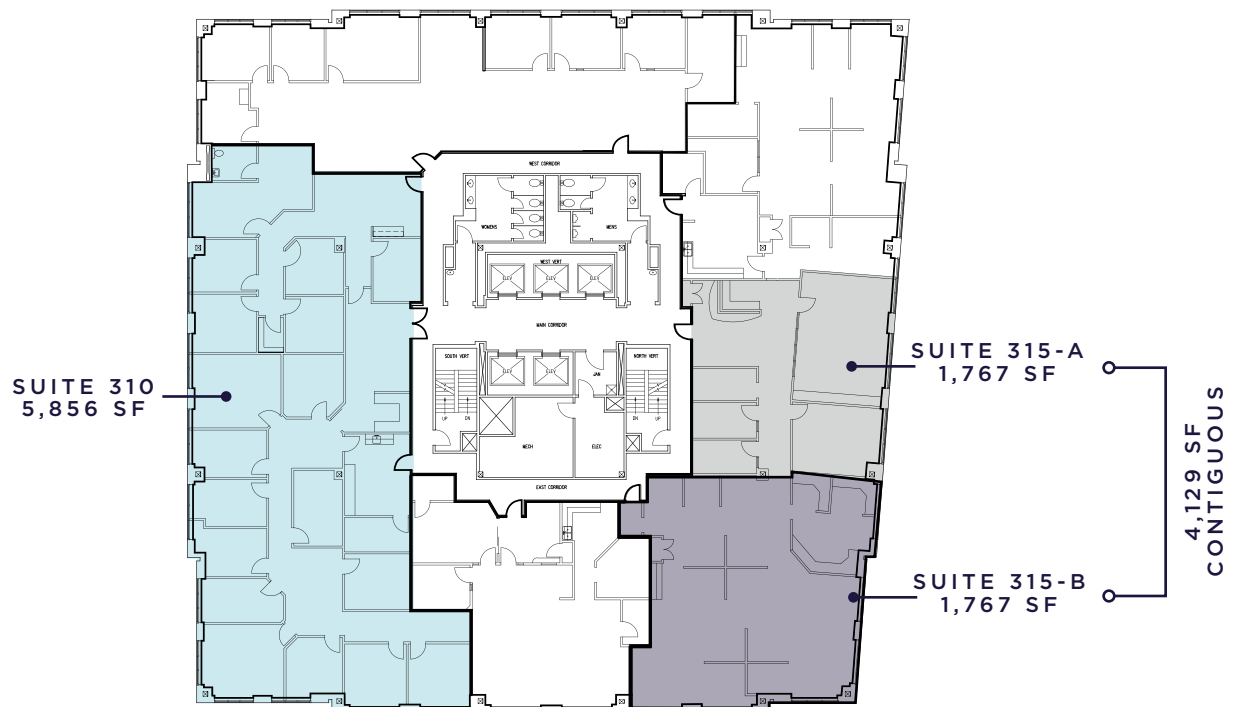
# Floorplans

THE  
B | A | L | D | W | I | N  
OFFICES

2nd Floor | 3,818 SF



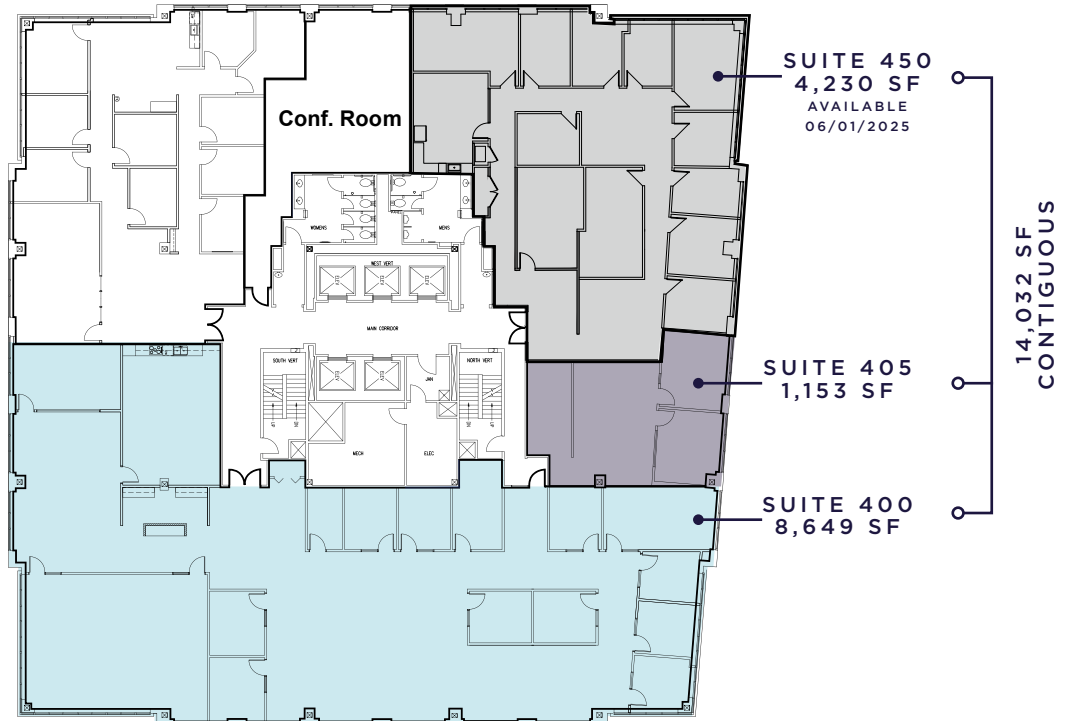
3rd Floor | 9,985 SF



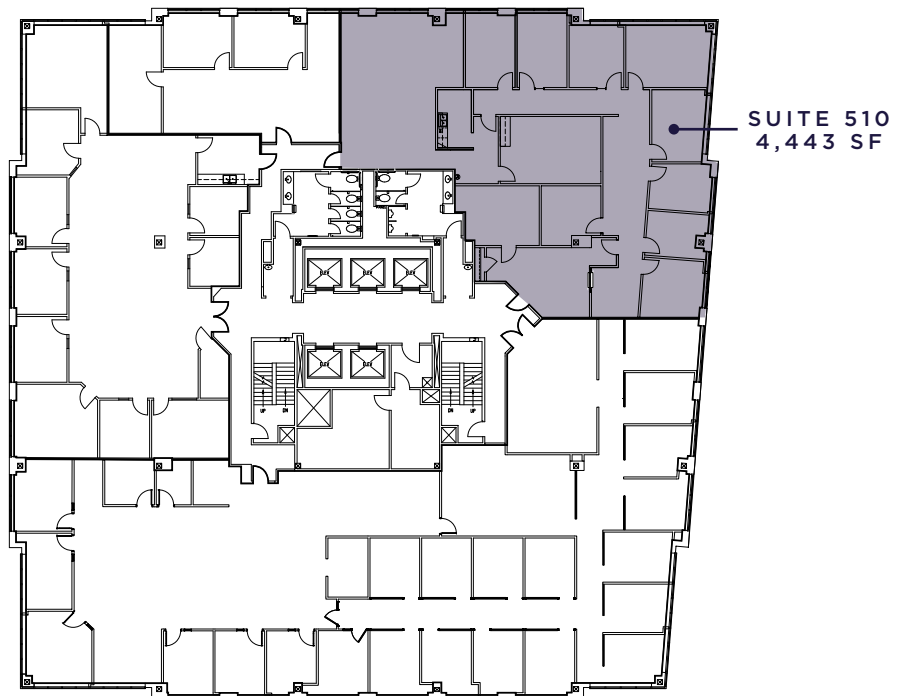
# Floorplans

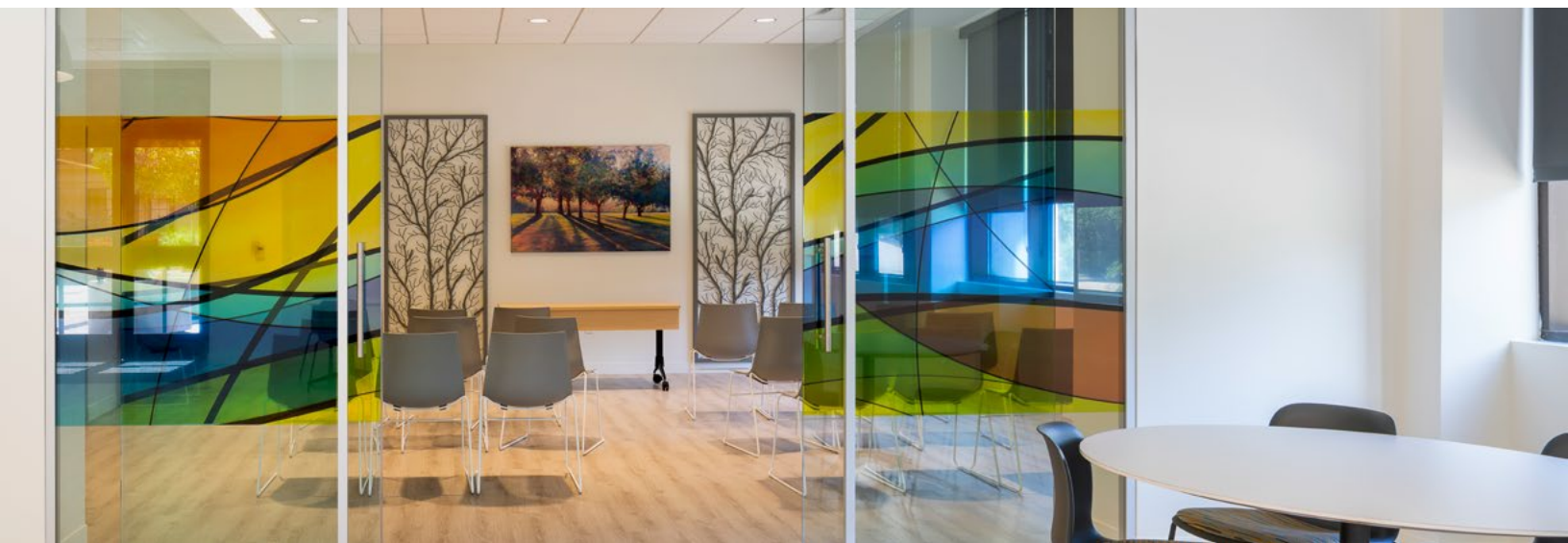
THE  
B | A | L | D | W | I | N  
OFFICES

4th Floor | 14,032 SF



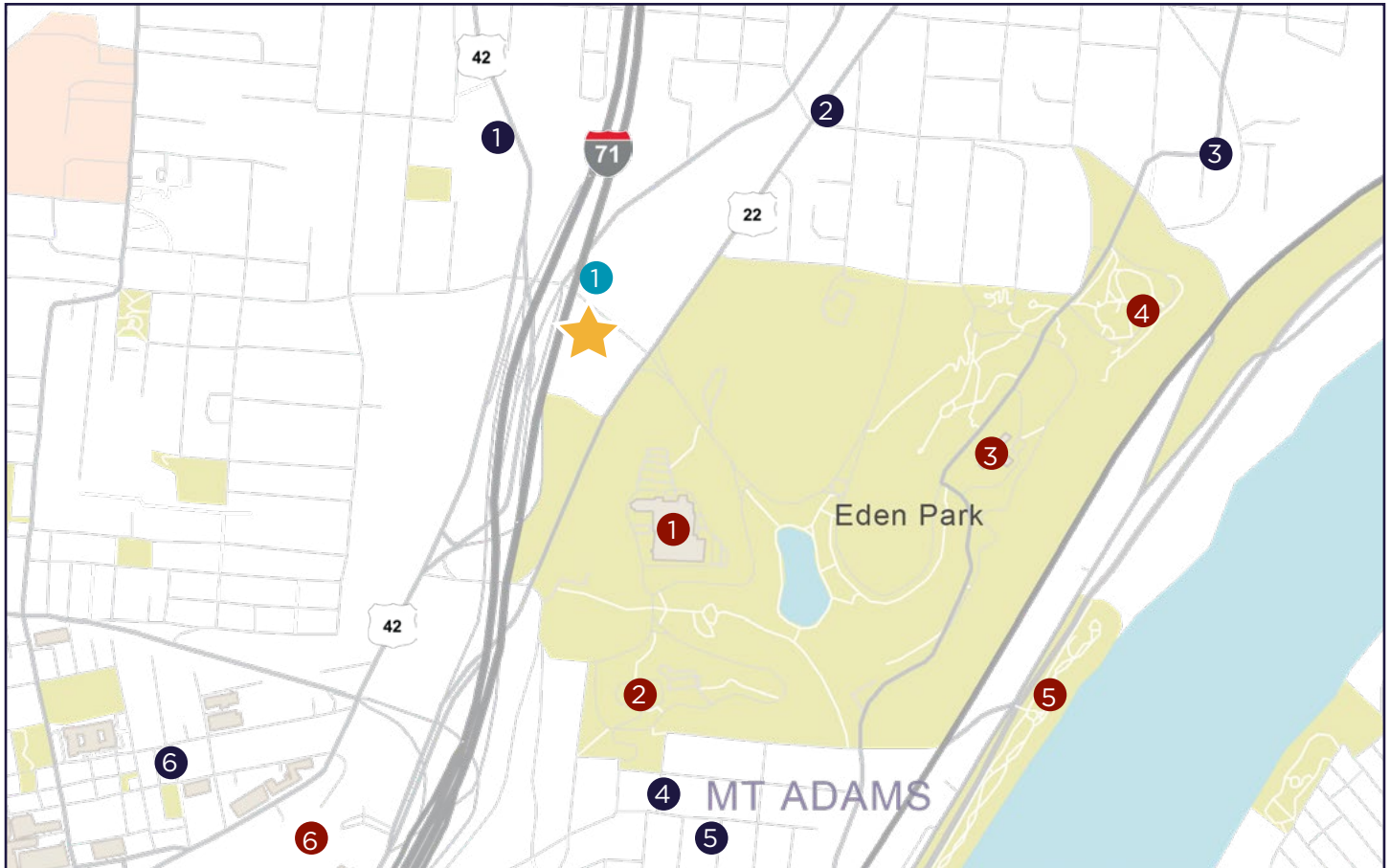
5th Floor | 4,443 SF







# Location



1. Graeter's
2. Andy's Mediterranean Grille
3. Le Bar A Boeuf
4. Mt. Adams Bar & Grille
5. Bow Tie Cafe, The Blind Lemon, Crowley's Highland House Cafe, Flora & Flair, Monk's Cove, Hi-Fi Cincy, The Hilltop, Your Mom's Pizzeria
6. Lucius Q, Razzo, Urbana Cafe, Braxton Brewing, Pendleton Parlor



1. Cincinnati Art Museum
2. Cincinnati Playhouse in the Park
3. Krohn Conservatory
4. Twin Lakes
5. International Friendship Park
6. Hard Rock Casino



1. SpringHill Suites

*Just minutes away  
from Downtown & OTR*

# Contact

## DIGGER DALEY

*Senior Director*

+1 513 763 3028

[digger.daley@cushwake.com](mailto:digger.daley@cushwake.com)

## SCOTT ABERNETHY, SIOR, CCIM

*Senior Director*

+1 513 763 3013

[scott.abernethy@cushwake.com](mailto:scott.abernethy@cushwake.com)



[cincyofficeadvisors.com](http://cincyofficeadvisors.com)

©2025 Cushman & Wakefield. All rights reserved. The information contained in this communication is strictly confidential. This information has been obtained from sources believed to be reliable but has not been verified. NO WARRANTY OR REPRESENTATION, EXPRESS OR IMPLIED, IS MADE AS TO THE CONDITION OF THE PROPERTY (OR PROPERTIES) REFERENCED HEREIN OR AS TO THE ACCURACY OR COMPLETENESS OF THE INFORMATION CONTAINED HEREIN. AND SAME IS SUBMITTED SUBJECT TO ERRORS, OMISSIONS, CHANGE OF PRICE, RENTAL OR OTHER CONDITIONS, WITHDRAWAL WITHOUT NOTICE, AND TO ANY SPECIAL LISTING CONDITIONS IMPOSED BY THE PROPERTY OWNER(S). ANY PROJECTIONS, OPINIONS OR ESTIMATES ARE SUBJECT TO UNCERTAINTY AND DO NOT SIGNIFY CURRENT OR FUTURE PROPERTY PERFORMANCE.

