
OFFICE SPACE AVAILABLE

3,000± to 41,377± SF

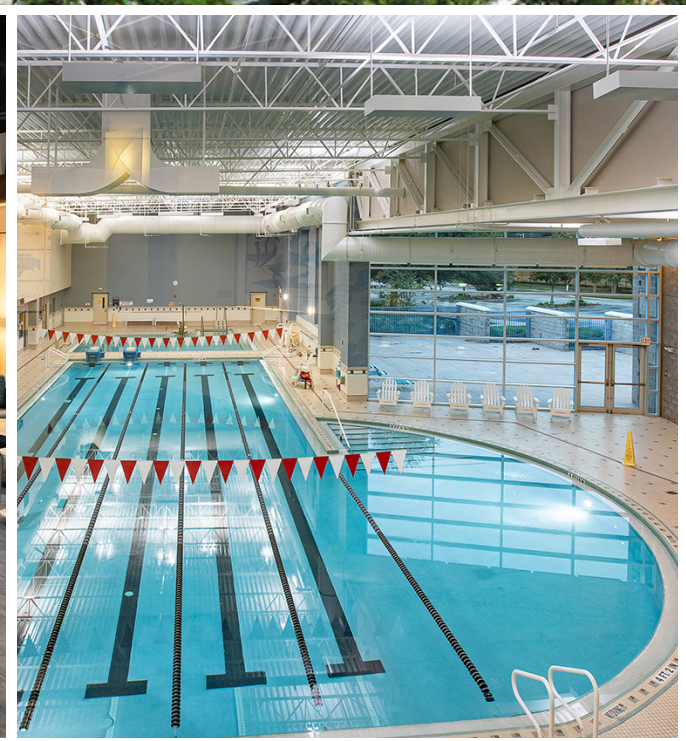


RDV SPORTSPLEX OFFICE CENTER

8701 MAITLAND SUMMIT BLVD
ORLANDO, FLORIDA



UNPARALLELED AMENITIES



RDV SPORTPLEX OFFICE CENTER HIGHLIGHTS

- 3,000 to 41,377 SF of Class A office space available
- Surface parking lot offering up to a 7.0/1,000 SF ratio
- Received an extensive \$20 million renovation in 2020
- On-site dining including Nature's Table
- Positioned at Orlando's premier state-of-the-art fitness facility (RDV Sportsplex)
- Negotiable membership opportunities for tenants offer a truly unmatched amenity package
- **Asking Rate \$25.00 PSF Net of Janitorial**



RDV SPORTPLEX AMENITIES

- GROUP FITNESS
- LOCKER ROOMS
- CERTIFIED PERSONAL TRAINING
- STATE-OF-THE-ART EQUIPMENT
- RDV MASSAGE
- AQUATIC CENTER
- ON-SITE DINING
- INDOOR & OUTDOOR COURT SPORTS
- CHILD CARE
- VARIOUS CARDIO & STRENGTH EQUIPMENT
- RDV ICE DEN
- COWORKING LOUNGE

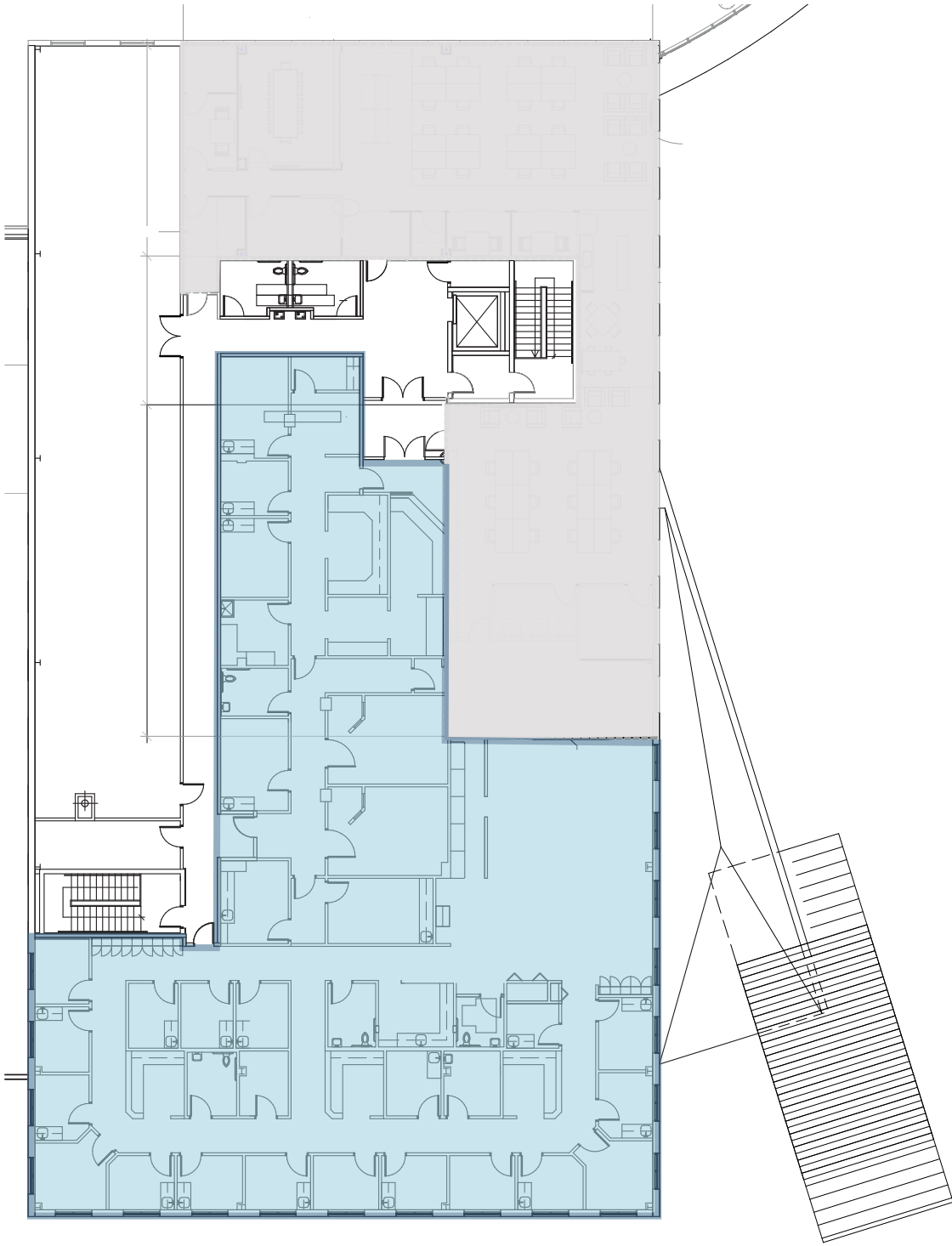


STATE-OF-THE-ART FACILITY

SPACE AVAILABLE FLOOR PLANS
7,249± - 41,377 RSF Available

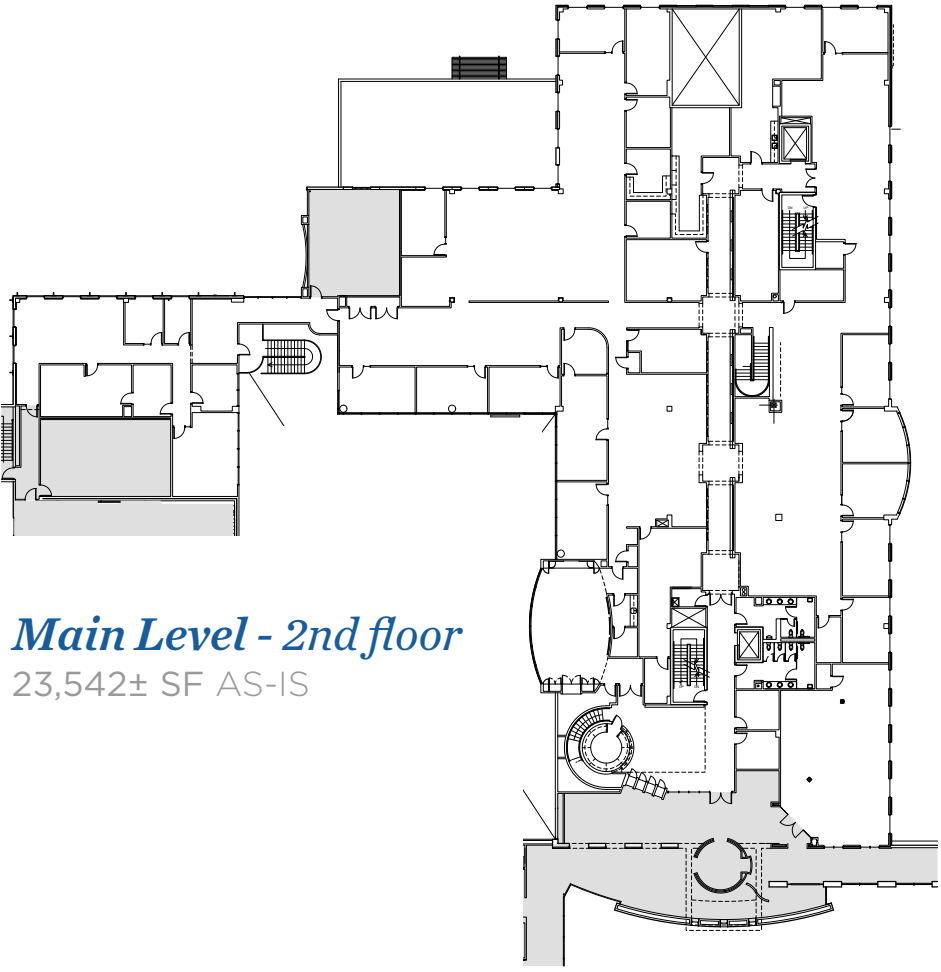
3RD FLOOR TOWER SPACE

3,000± - 7,249± SF



SINGLE TENANT AS-IS

LEVELS CONNECTED BY GRAND SPIRAL STAIRCASE
17,835± - 41,377± SF

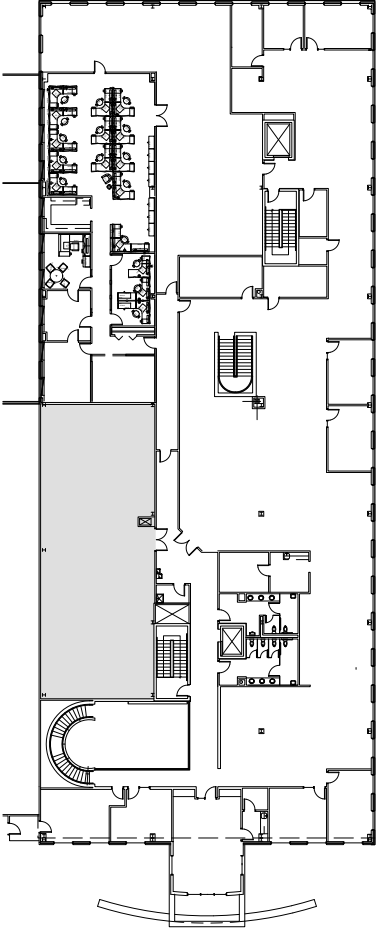


Main Level - 2nd floor

23,542± SF AS-IS

Upper Level - 3rd floor

17,835± SF AS-IS



SAMPLE SINGLE TENANT SCENARIO

Floor Plans - 41,377 SF

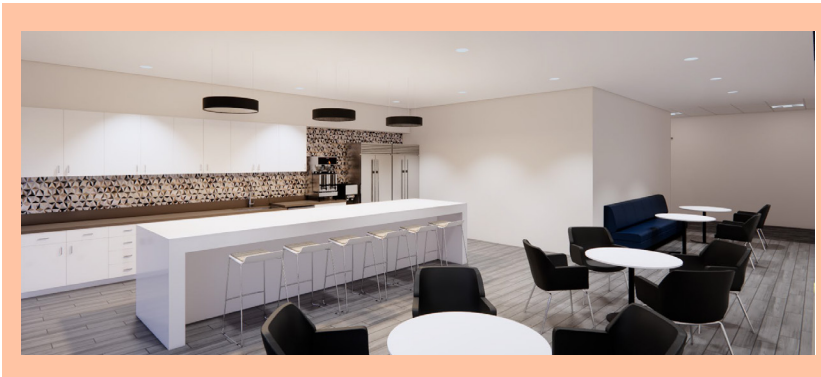
RDV SPORTSPLEX

MAIN LEVEL - 2ND FLOOR

23,542± SF



WORKSTATIONS, DIRECTOR'S OFFICES, MARKETING LOUNGE AND CONFERENCE ROOMS



EMPLOYEE CAFE, DINING AND LOUNGE

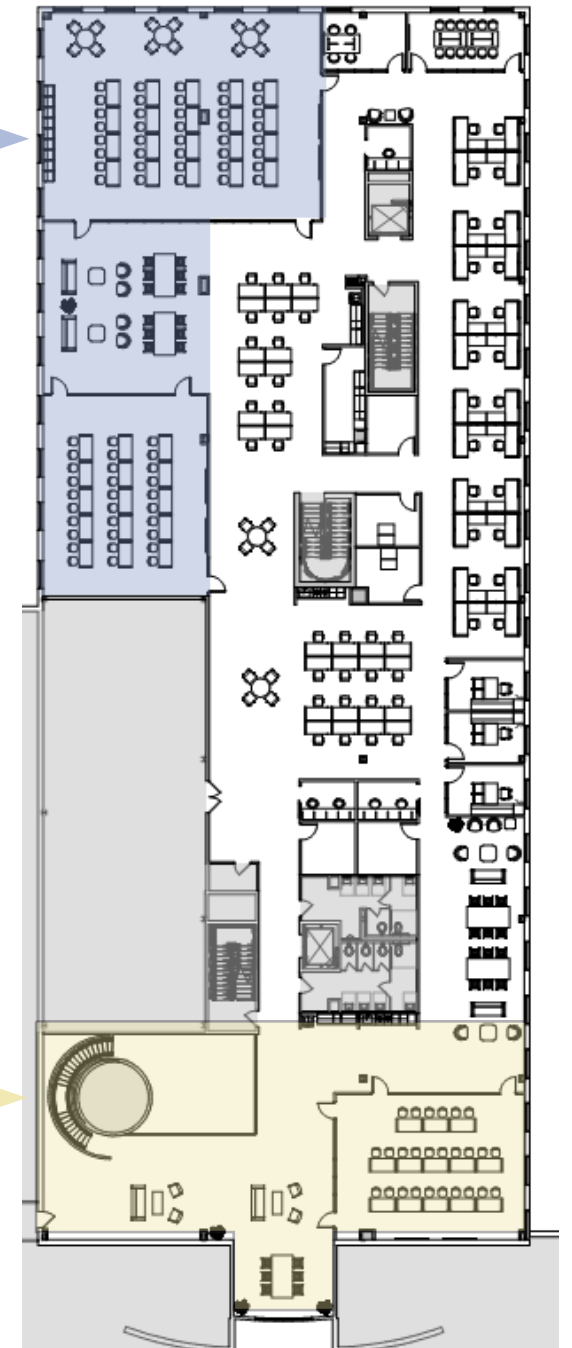
UPPER LEVEL - 3RD FLOOR

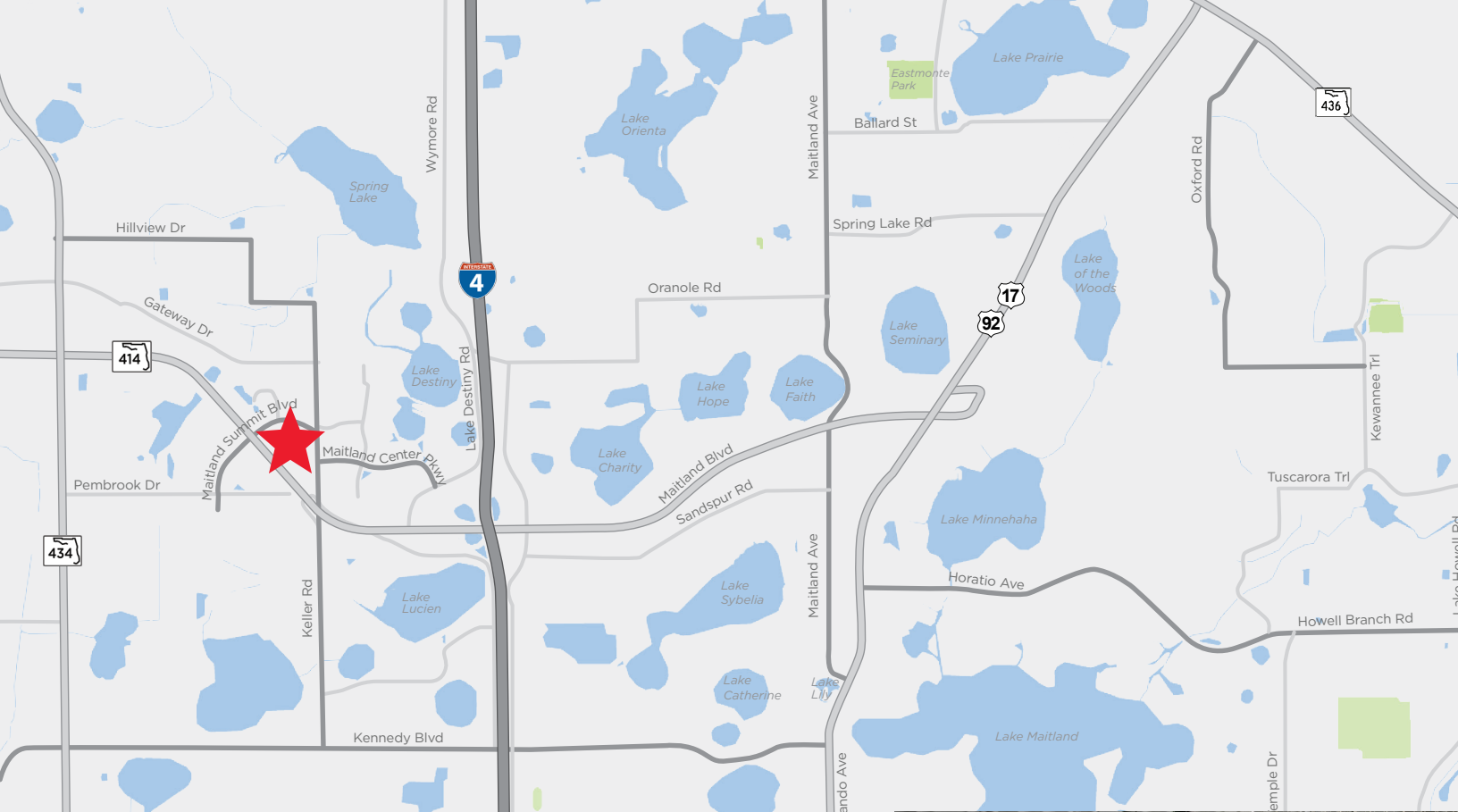
LEVELS CONNECTED BY GRAND SPIRAL STAIRCASE
17,835± SF



COMPUTER LAB, PRESENTATION ROOM, TOUCH DOWN PODS AND EMPLOYEE LOUNGE

DRAMATIC STAIRWELL, SECONDARY RECEPTION, OPEN COLLABORATION PERCH AND TRAINING ROOM





RDV SPORTSPLEX OFFICE CENTER IS IDEALLY LOCATED IN ORLANDO'S MAITLAND SUBMARKET.

This location offers superior ease-of-access, less than three minutes to Interstate-4, nine minutes to downtown Orlando and convenient to the greater Orlando submarkets. Abundant restaurants, business hotels, retail shops and upscale neighborhoods are within close proximity to the RDV Sportsplex.



Contact Information:

GLEN JAFFEE

Senior Associate
+1 407 541 4408
glen.jaffee@cushwake.com

ROBERT KELLOGG, CCIM

Senior Director
+1 407 541 4416
robert.kellogg@cushwake.com

TODD DAVIS, SIOR, CCIM

Senior Director
+1 407 541 4412
todd.a.davis@cushwake.com



Cushman & Wakefield of Florida, LLC
20 N Orange Ave
Suite 300
Orlando, FL 32801

©2020 Cushman & Wakefield. All rights reserved. The information contained in this communication is strictly confidential. This information has been obtained from sources believed to be reliable but has not been verified. NO WARRANTY OR REPRESENTATION, EXPRESS OR IMPLIED, IS MADE AS TO THE CONDITION OF THE PROPERTY (OR PROPERTIES) REFERENCED HEREIN OR AS TO THE ACCURACY OR COMPLETENESS OF THE INFORMATION CONTAINED HEREIN, AND SAME IS SUBMITTED SUBJECT TO ERRORS, OMISSIONS, CHANGE OF PRICE, RENTAL OR OTHER CONDITIONS, WITHDRAWAL WITHOUT NOTICE, AND TO ANY SPECIAL LISTING CONDITIONS IMPOSED BY THE PROPERTY OWNER(S). ANY PROJECTIONS, OPINIONS OR ESTIMATES ARE SUBJECT TO UNCERTAINTY AND DO NOT SIGNIFY CURRENT OR FUTURE PROPERTY PERFORMANCE.