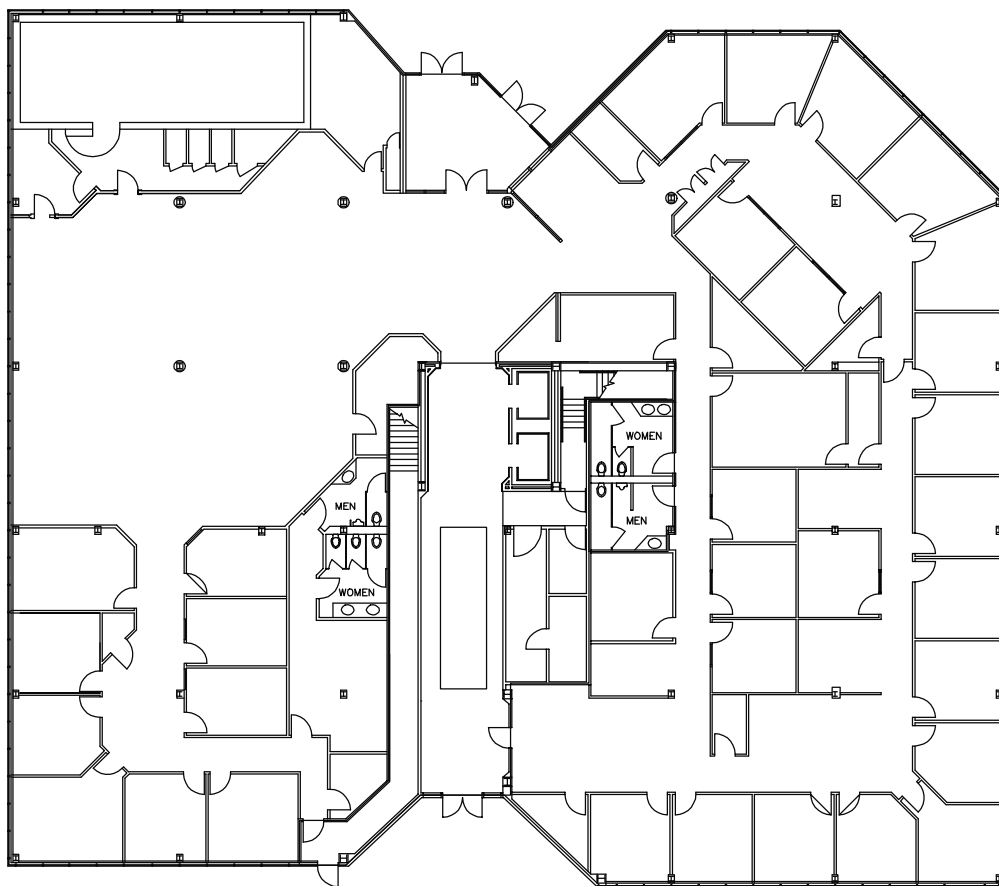


629 GREEN VALLEY RD  
GREENSBORO, NC 27408

GREEN VALLEY OFFICE PARK  
1ST FLOOR AVAILABILITY



NO AVAILABILITY

**Kevin Kemp, SIOR**  
Managing Director  
+1 336 812 3307  
[kevin.kemp@cushwake.com](mailto:kevin.kemp@cushwake.com)

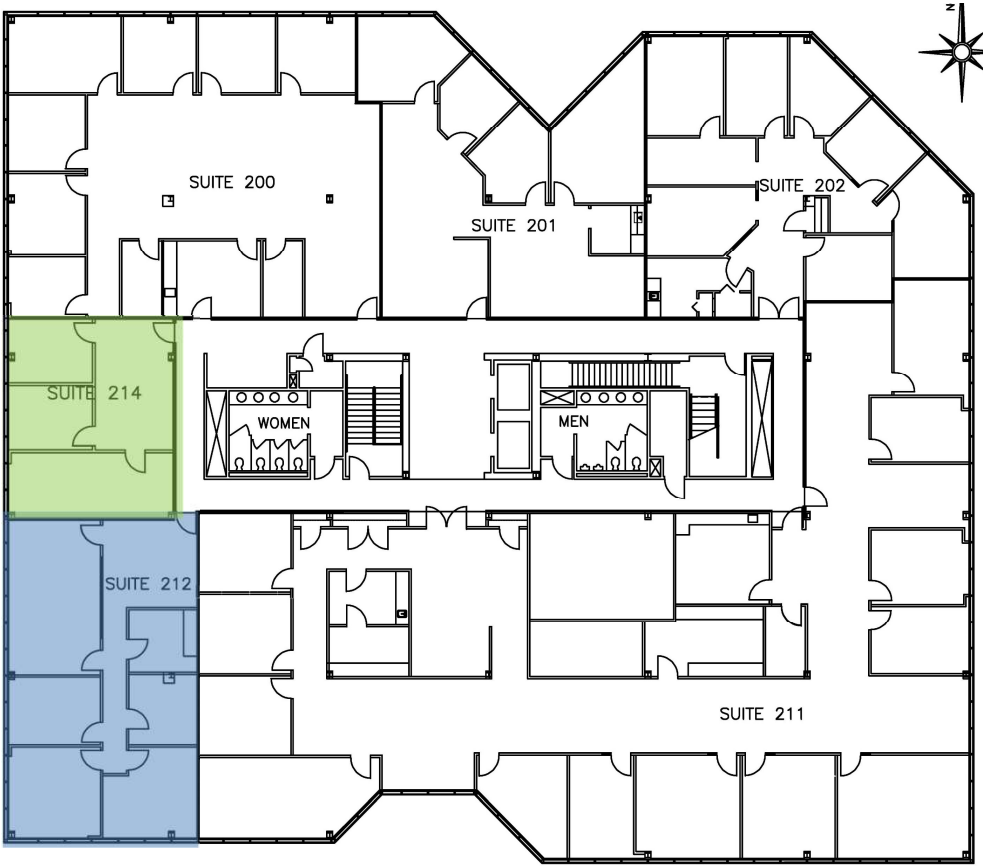
**Raffi Simel, SIOR**  
Director  
+1 336 289 2541  
[raffi.simel@cushwake.com](mailto:raffi.simel@cushwake.com)



628 Green Valley Road, Ste. 202  
Greensboro, NC 27408  
Main +1 336 668 9999  
[cushmanwakefield.com](http://cushmanwakefield.com)

629 GREEN VALLEY RD  
GREENSBORO, NC 27408

GREEN VALLEY OFFICE PARK  
2ND FLOOR AVAILABILITY



SUITE 214	865 +/- RSF Available
SUITE 212	1,585 +/- RSF Available

**Kevin Kemp, SIOR**  
Managing Director  
+1 336 812 3307  
[kevin.kemp@cushwake.com](mailto:kevin.kemp@cushwake.com)

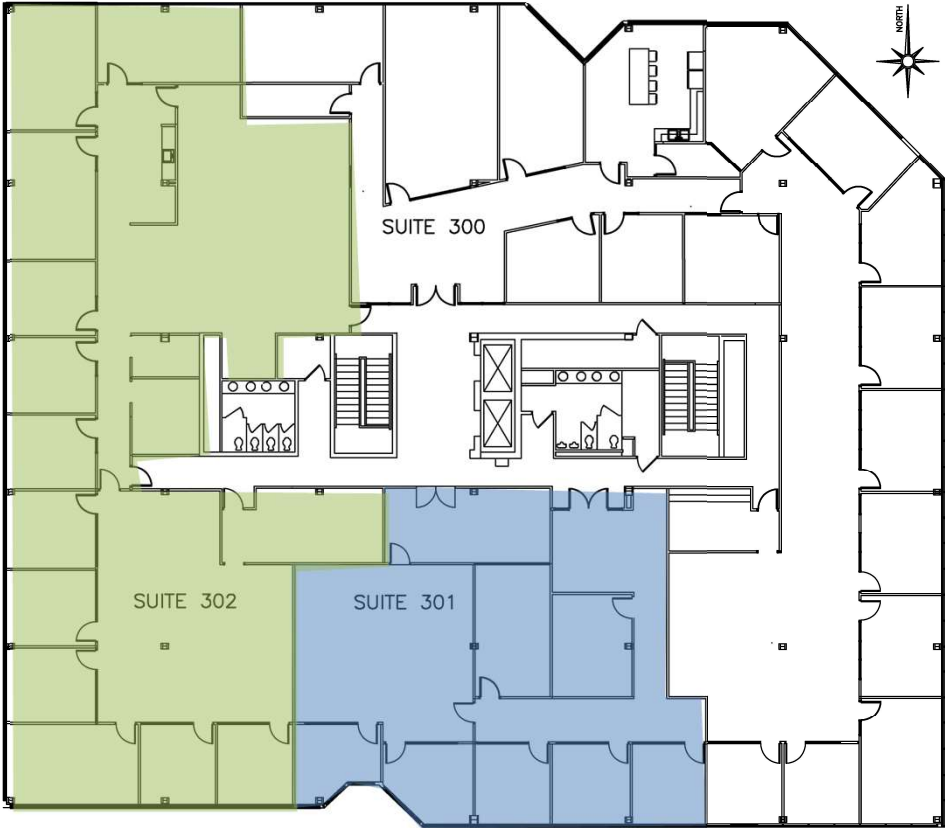
**Raffi Simel, SIOR**  
Director  
+1 336 289 2541  
[raffi.simel@cushwake.com](mailto:raffi.simel@cushwake.com)



628 Green Valley Road, Ste. 202  
Greensboro, NC 27408  
Main +1 336 668 9999  
[cushmanwakefield.com](http://cushmanwakefield.com)

629 GREEN VALLEY RD  
GREENSBORO, NC 27408

GREEN VALLEY OFFICE PARK  
3RD FLOOR AVAILABILITY



SUITE 301	3,297+/- RSF Available
SUITE 302	6,287+/- RSF Available

**Kevin Kemp, SIOR**  
Managing Director  
+1 336 812 3307  
[kevin.kemp@cushwake.com](mailto:kevin.kemp@cushwake.com)

**Raffi Simel, SIOR**  
Director  
+1 336 289 2541  
[raffi.simel@cushwake.com](mailto:raffi.simel@cushwake.com)



628 Green Valley Road, Ste. 202  
Greensboro, NC 27408  
Main +1 336 668 9999  
[cushmanwakefield.com](http://cushmanwakefield.com)