
The TOWNE BANK Building

— at —
628 Green Valley Road



GREEN VALLEY OFFICE PARK

GREENSBORO, NC 27408

628 GREEN VALLEY RD

GREENSBORO, NC 27408



PROPERTY HIGHLIGHTS

BUILDING HIGHLIGHTS

- Class A Office Property
- 106,959 SF
- Built in 1997
- Prominent location and visibility
- Two (2) Elevators
- Property enhancements currently under construction include updated interior and lobby finishes, newly designed covered entrance, building uplighting, and landscape refresh.



- Abundant amenities within walking distance, including the Green Valley Grill/O'Henry Hotel across the parking lot
- Direct and Convenient access to major thoroughfares
- Ample Parking Available
- Efficient floorplan layouts with great views from each office suite with an abundance of natural light.

For more information, please contact:

RYAN GIOFFRE
Senior Director
+1 336 821 3822
ryan.gioffre@cushwake.com

JASON OFSANKO
Executive Director
+1 336 812 3300
jason.ofsanko@cushwake.com



628 Green Valley Road, Ste. 202
Greensboro, NC 27408

T +1 336 668 9999
F +1 336 668 0888

cushmanwakefield.com



5

OFFICE SPACE AVAILABILITIES

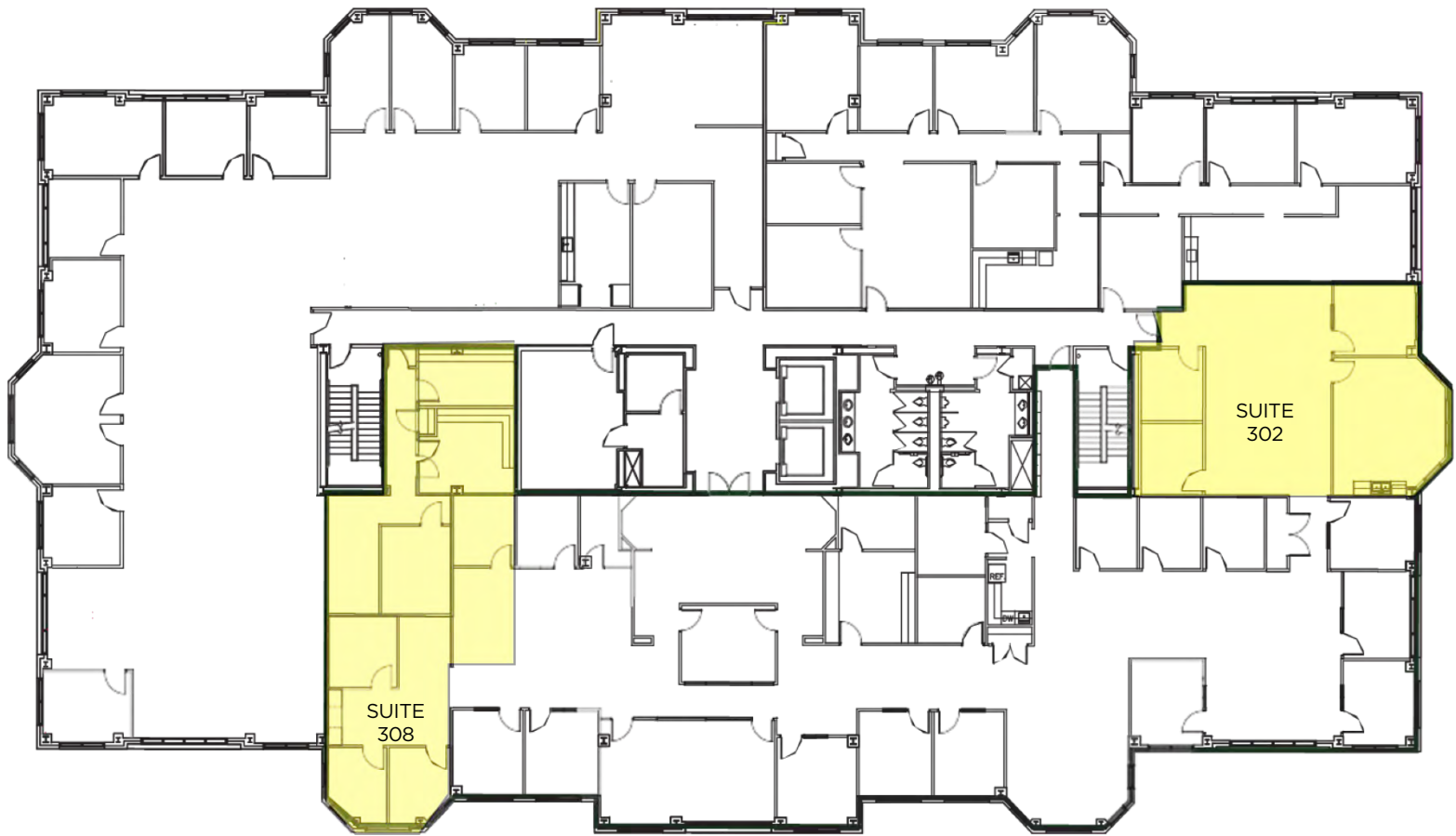
628 GREEN VALLEY RD

GREENSBORO, NC 27408

3rd Floor Availability

Suite 302: 1,419 +/- RSF

Suite 308: 1,557 +/- RSF



For more information, please contact:

RYAN GIOFFRE

Senior Director

+1 336 821 3822

ryan.gioffre@cushwake.com

JASON OFSANKO

Executive Director

+1 336 812 3300

jason.ofsanko@cushwake.com



628 Green Valley Road, Ste. 202
Greensboro, NC 27408

T +1 336 668 9999

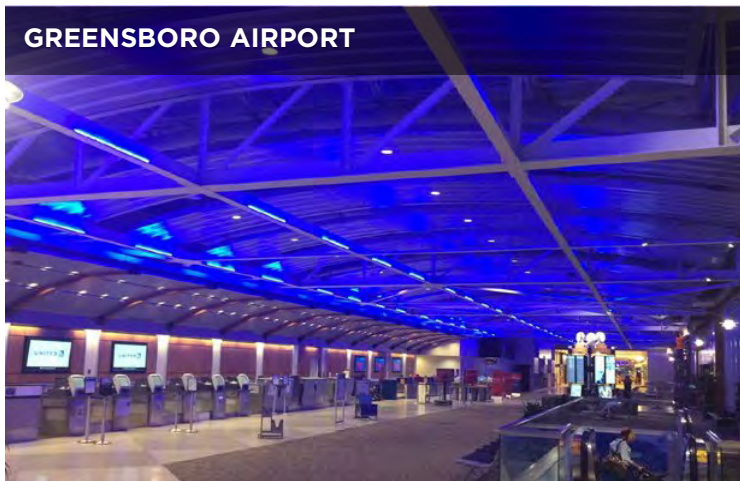
F +1 336 668 0888

cushmanwakefield.com

6 LOCATION HIGHLIGHTS

628 GREEN VALLEY RD
GREENSBORO, NC 27408

GREENSBORO AIRPORT



MULTI-FAMILY AT FRIENDLY SHOPPING CENTER



FRIENDLY SHOPPING CENTER



DOWNTOWN GREENSBORO



WITHIN A 10-MINUTE DRIVE TIME:

347

Dining / Bar / Pub

23

Hotels / Lodging

1,063

Retail / Trade

WITHIN A 1-MILE RADIUS:

19,579

Total Daytime Population

1,060

Establishments

For more information, please contact:

RYAN GIOFFRE
Senior Director
+1 336 821 3822
ryan.gioffre@cushwake.com

JASON OFSANKO
Executive Director
+1 336 812 3300
jason.ofsanko@cushwake.com



628 Green Valley Road, Ste. 202
Greensboro, NC 27408

T +1 336 668 9999
F +1 336 668 0888

cushmanwakefield.com