



**CUSHMAN &  
WAKEFIELD**

## 2000 Frontis Plaza Blvd.- Forsyth Corporate Center Winston-Salem, NC 27103

**AVAILABLE FOR LEASE**

### Property Highlights

#### Available Suites:

Suite 101:	6,183 SF
Suite 102:	3,255 SF
Suite 106:	2,333 SF
Suite 109:	1,368 SF
Suite 200:	4,929 SF
Suite 201:	1,924 SF
Suite 205:	7,111 SF
Suite 309:	5,993 SF

- Up to ± 33,096 SF on the 1st, 2nd and 3rd floors
- Marble entry lobby
- Balconies at strategic locations
- Less than one mile to I-40
- Direct access from Hanes Mall Boulevard
- The building is ideally located down the street from Hanes Mall and has nearby shops, restaurants, banks, and other public services
- Call for asking rate

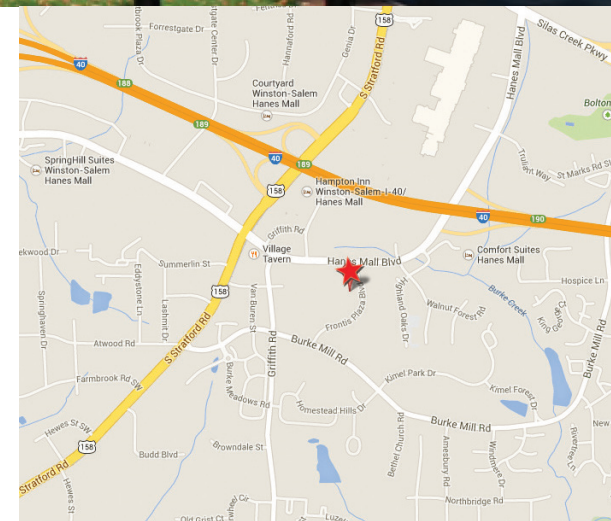
#### Bobby Finch

Executive Managing Director  
+1 336 812 3303  
bobby.finch@cushwake.com

#### Seth Constable

Senior Associate  
+1 336 885 7815  
seth.constable@cushwake.com

121-D Reynolda Village  
Winston-Salem, NC 27106  
Main +1 336 668 999  
Fax +1 336 668 0888  
**cushmanwakefield.com**







**CUSHMAN &  
WAKEFIELD**

**2000 Frontis Plaza Blvd.- Forsyth Corporate Center**  
Winston-Salem, NC 27103

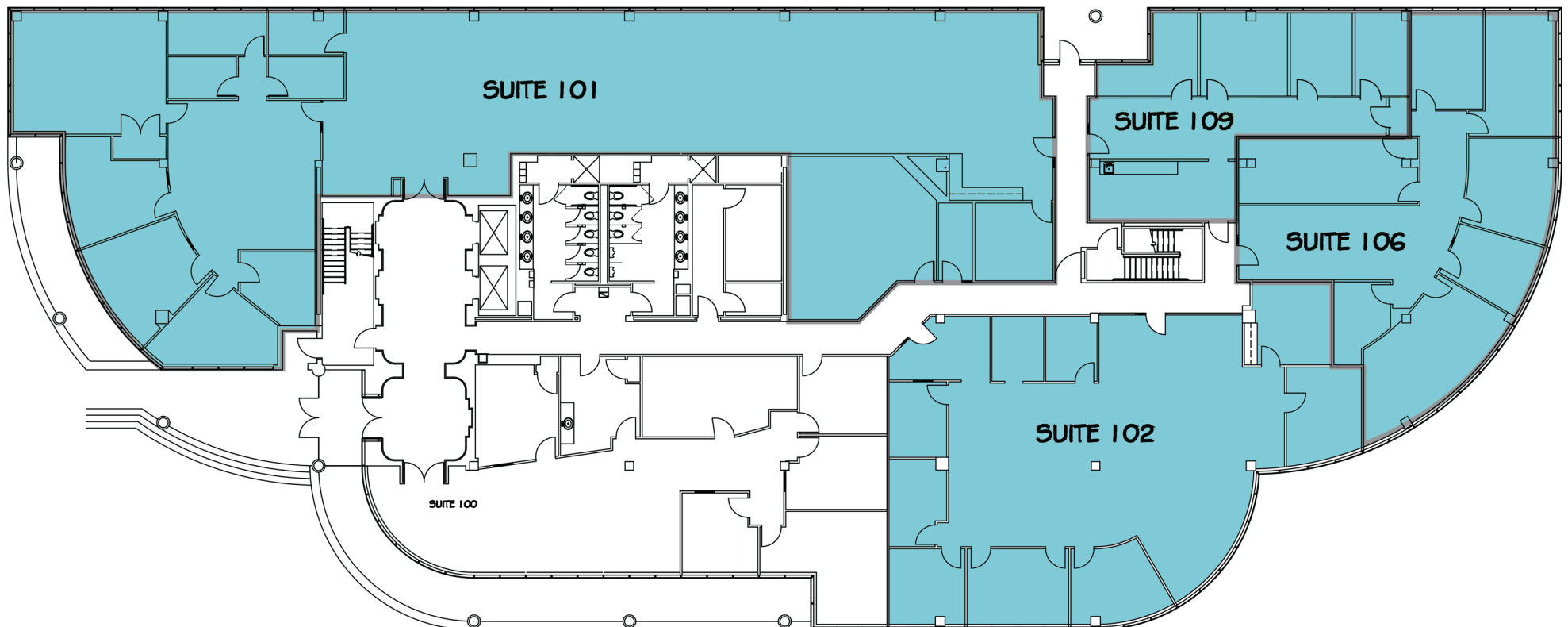




## 1ST FLOOR PLAN

### AVAILABLE SPACE:

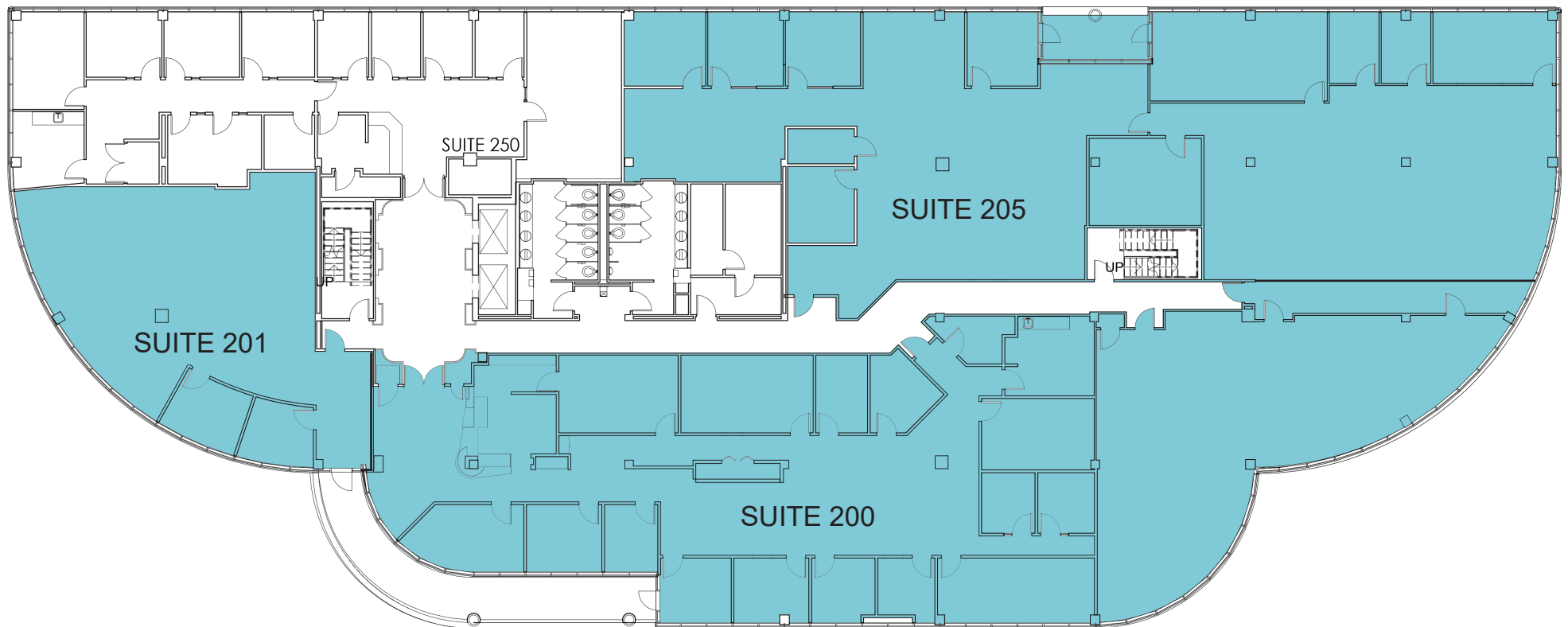
Suite 101:	6,183 SF
Suite 102:	3,255 SF
Suite 106:	2,333 SF
Suite 109:	1,368 SF
TOTAL:	13,139 SF



## 2ND FLOOR PLAN

### AVAILABLE SPACE:

Suite 200:	4,929 SF
Suite 201:	1,924 SF
Suite 205:	7,111 SF
<hr/>	
TOTAL:	13,964 SF





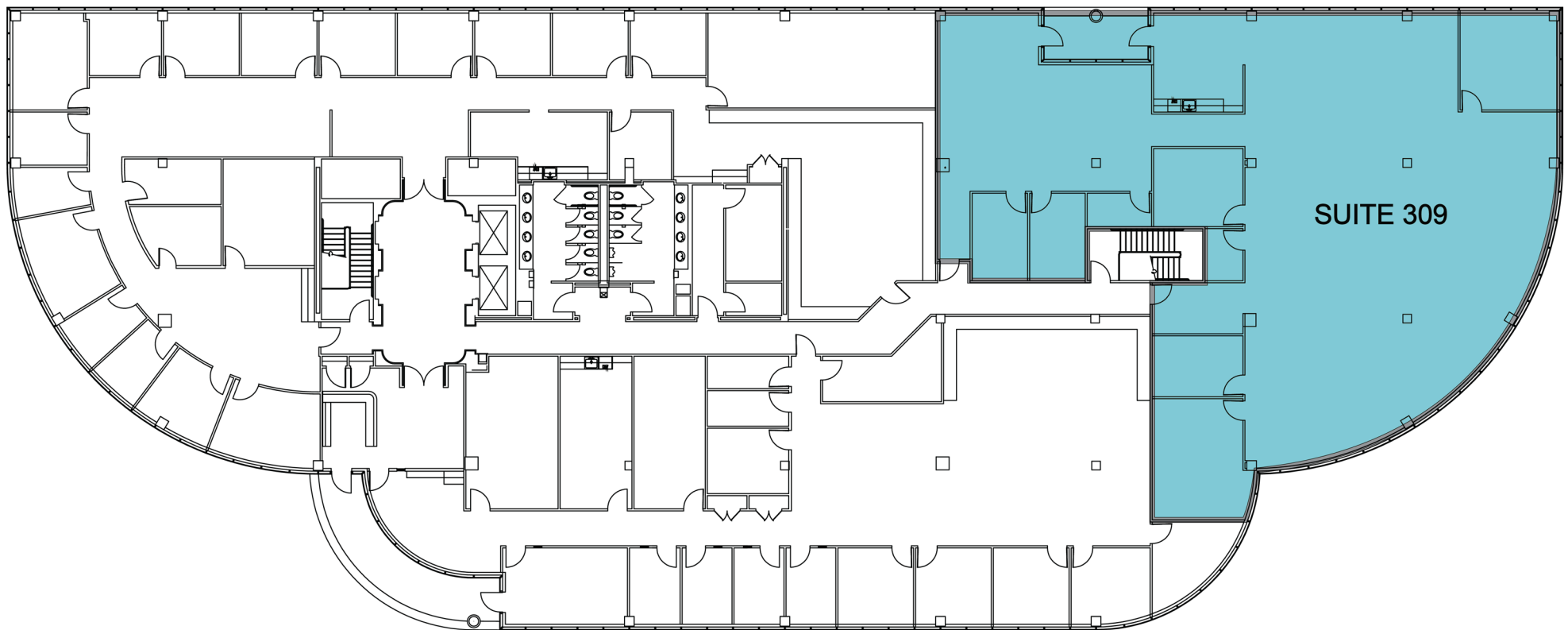
**CUSHMAN &  
WAKEFIELD**

**2000 Frontis Plaza Blvd.- Forsyth Corporate Center  
Winston-Salem, NC 27103**

## 3RD FLOOR PLAN

### AVAILABLE SPACE:

Suite 309: 5,993 SF



For more information, please contact:

**Bobby Finch**

Executive Managing Director  
+1 336 812 3303  
bobby.finch@cushwake.com

**Seth Constable**

Senior Associate  
+1 336 885 7815  
seth.constable@cushwake.com

121-D Reynolda Village  
Winston-Salem, NC 27106  
Main +1 336 668 999  
Fax +1 336 668 0888  
**cushmanwakefield.com**