

WHERE CREATIVITY  
COMES TO THRIVE

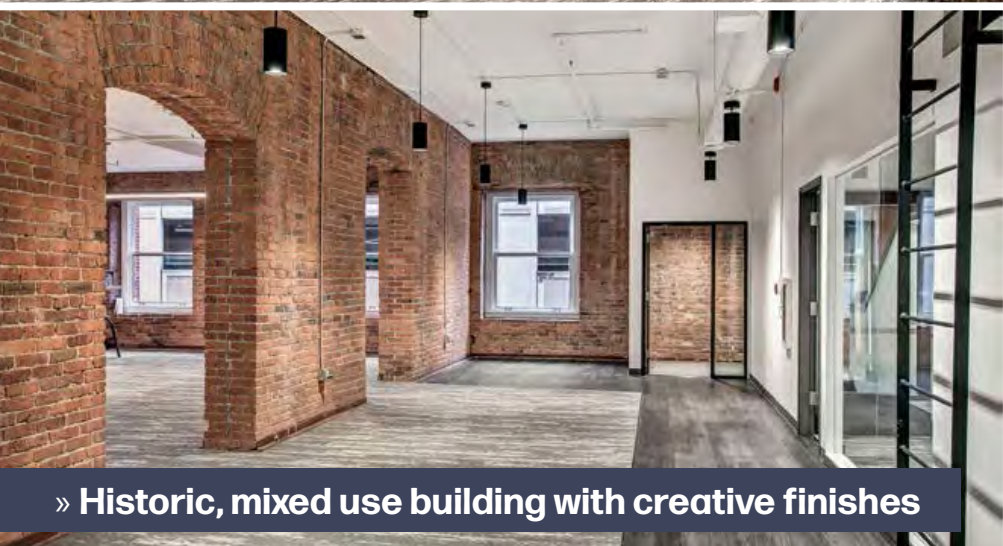


THE  
COLONIAL  
AT SENECA STEPS

1113 - 1123 FIRST AVENUE | SEATTLE, WASHINGTON



CUSHMAN &  
WAKEFIELD



» Historic, mixed use building with creative finishes



## BUILDING HIGHLIGHTS



Adjacent to Harbor Steps & Post Alley  
Steps away from Seattle's waterfront



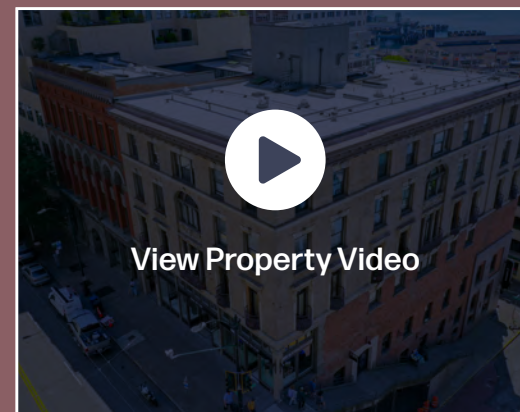
Ample parking available nearby



Newly renovated building



[View Property Video](#)





schematic, not to scale



PIER 58 (WATERFRONT PARK)



PIKE PINE STREETScape & BIKE IMPROVEMENTS



THE PARK PROMENADE

# SEATTLE'S NEW WATERFRONT

## JUST STEPS AWAY

The Waterfront Seattle Program began as a community vision to remove the Alaskan Way Viaduct and reconnect the city to its waterfront. The project started construction in 2020 and is anticipated to deliver the final phases in 2025.

**\$1.07B** redevelopment project  
**\$400M** annual business revenue  
**8-12M** projected annual visitors



# CURRENT AVAILABILITIES

## SPACE SUITE 1114

5,178 RSF

- » Fully spec suite
- » Post Avenue entrance
- » Blade signage available
- » In-suite shower and restrooms

[VIEW VIRTUAL TOUR OF SUITE 1114](#)

## SPACE SUITE 1120

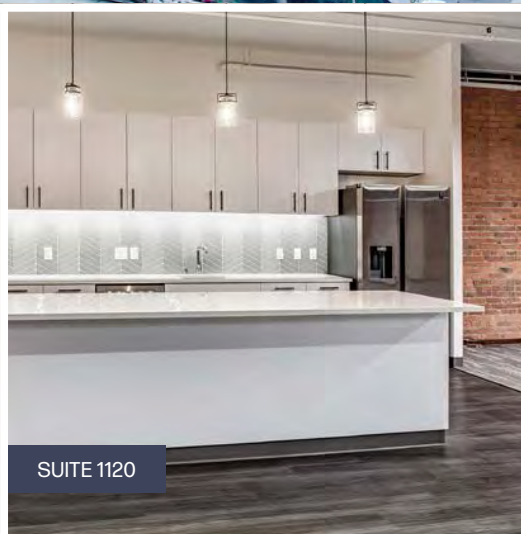
OPTION A: 14,182 RSF  
OPTION B: 6,912 RSF  
OPTION C: 7,270 RSF

- » Full spec suite
- » Divisible to 6,912 SF
- » Access via Private Entrance
- » Immediate occupancy
- » Showers in suite

[VIEW VIRTUAL TOUR OF SUITE 1120](#)



SUITE 1114



SUITE 1120



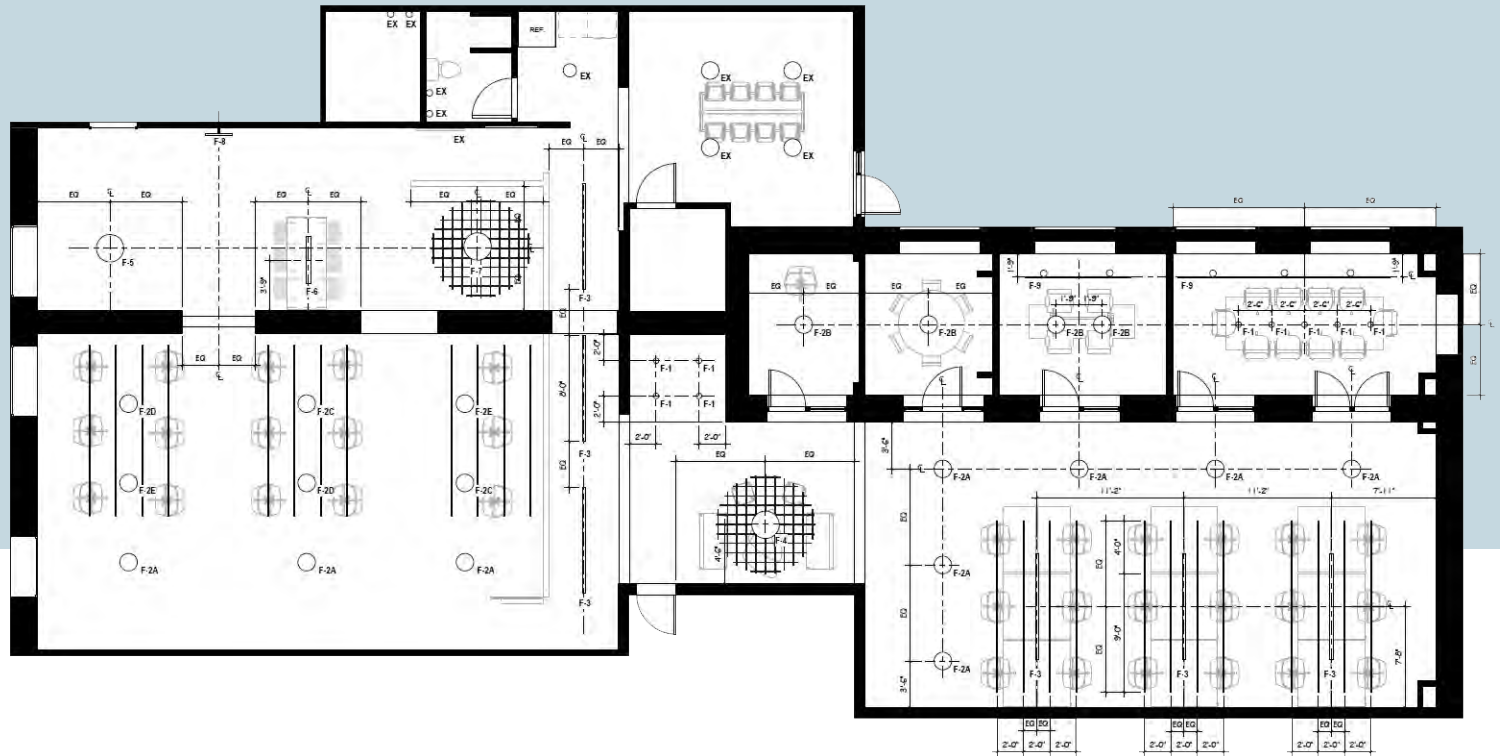
SUITE 1114

# SPACE SUITE 1114

5,178 RSF

- » Full Spec Suite
- » Post Avenue entrance
- » Blade signage available
- » In-suite shower and restrooms

VIRTUAL TOUR



# SPACE SUITE 1120

OPTION A: 14,182 RSF

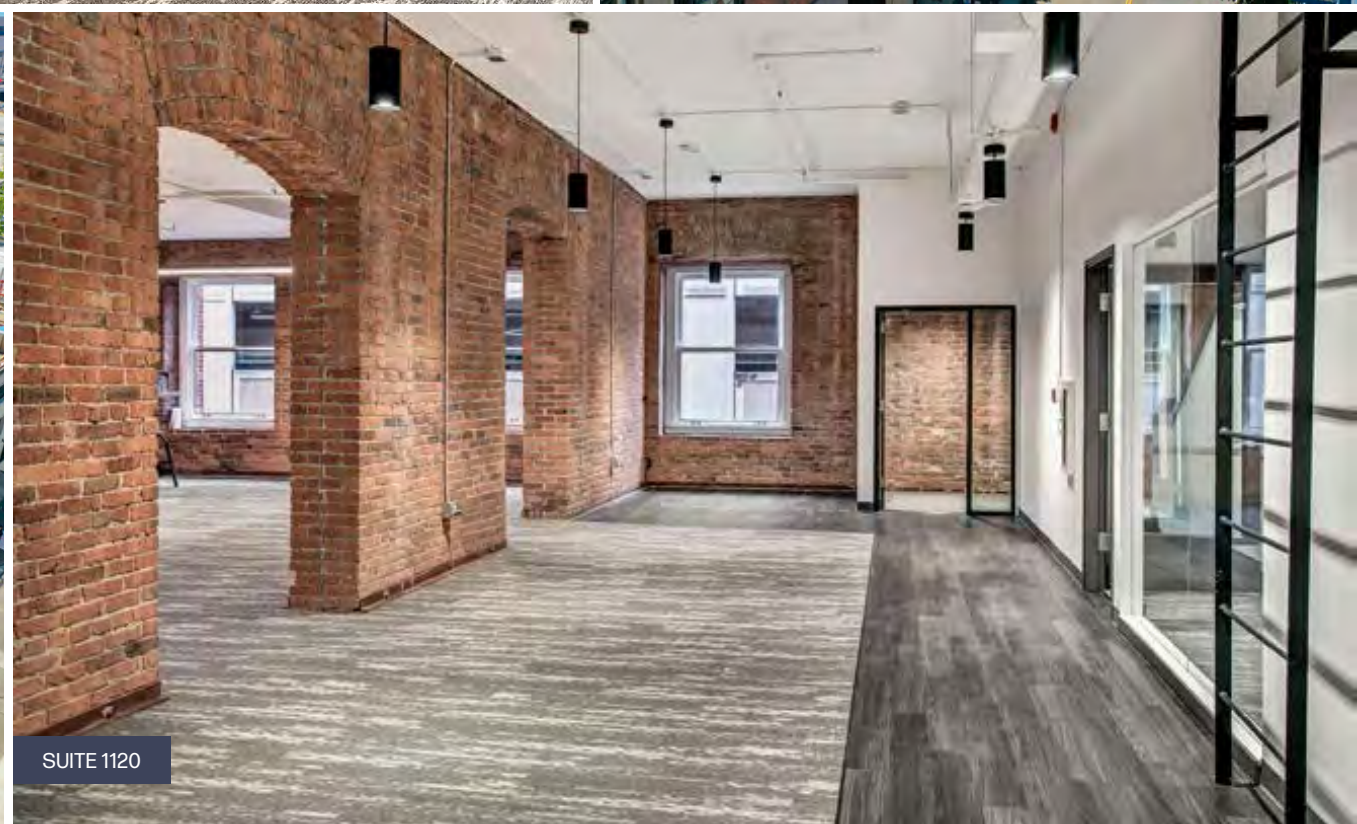
OPTION B: 6,912 RSF

OPTION C: 7,270 RSF

- » Full Spec Suite
- » Divisible to 6,912 SF
- » Access via Private Entrance
- » Immediate occupancy
- » Showers in suite

VIRTUAL TOUR





## ATTRACTIONS

- 1 Lumen Field
- 2 Seattle Aquarium
- 3 Seattle Art Museum
- 4 Seattle Public Library
- 5 Sky View Observatory
- 6 Smith Tower
- 7 Space Needle
- 8 The Great Wheel
- 9 T-Mobile Park

## LODGING

- 10 Fairmont Olympic Hotel
- 11 Grand Hyatt Seattle
- 12 Hotel Monaco
- 13 Hyatt at Olive 8
- 14 Seattle Marriott Waterfront
- 15 Sheraton Grand Seattle
- 16 The Four Seasons
- 17 The Motif
- 18 The Westin

## RESTAURANTS

- 19 Anthony's on Pier 66
- 20 Bai Tong Thai
- 21 Bateau
- 22 Cafe Campagne
- 23 Elliott's Oyster House
- 24 Hard Rock Cafe
- 25 HoneyHole Sandwiches
- 26 Ivar's Acres of Clams
- 27 Jerk Shack
- 28 Matt's In The Market
- 29 MBar
- 30 Metropolitan Grill
- 31 Pike Place Chowder
- 32 Rhein Haus
- 33 Wild Ginger

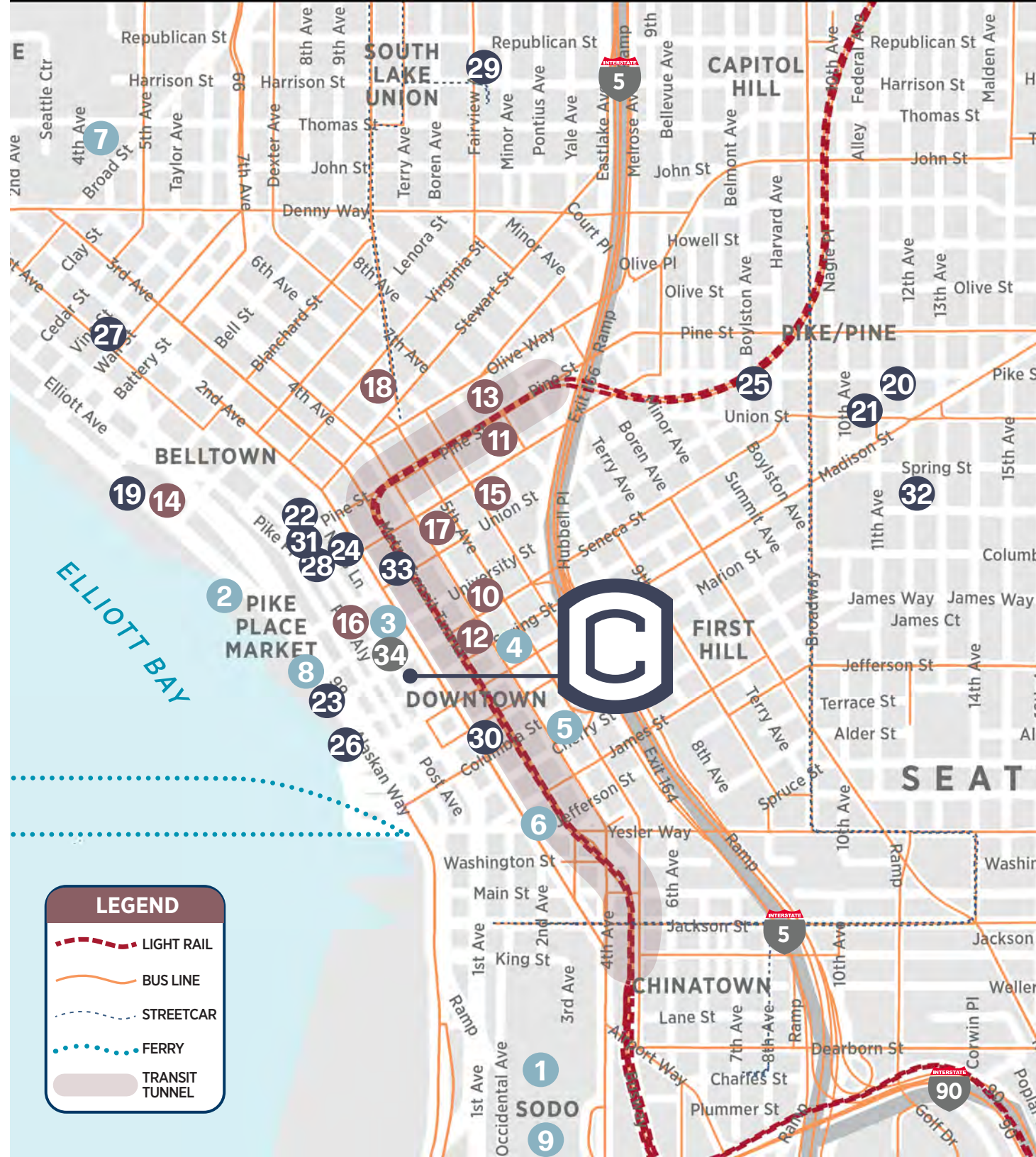
## HARBOR STEPS

- 34 Harbor Steps

skillet



- Amazon Store
- Mason's Lobster Rolls
- Cassina
- Linge Roset
- Taqueria Cantina
- Starbucks Reserve
- Vons
- Dogtopia





BRANDON BURMEISTER

Senior Director

+1 206 215 9702

brandon.burmeister@cushwake.com

ANDREW SHULTZ

Senior Director

+1 206 215 1645

andrew.shultz@cushwake.com

LEAH MASSON

Senior Director

+1 206 215 9803

leah.masson@cushwake.com

©2024 Cushman & Wakefield. All rights reserved. The information contained in this communication is strictly confidential. This information has been obtained from sources believed to be reliable but has not been verified. NO WARRANTY OR REPRESENTATION, EXPRESS OR IMPLIED, IS MADE AS TO THE CONDITION OF THE PROPERTY (OR PROPERTIES) REFERENCED HEREIN OR AS TO THE ACCURACY OR COMPLETENESS OF THE INFORMATION CONTAINED HEREIN, AND SAME IS SUBMITTED SUBJECT TO ERRORS, OMISSIONS, CHANGE OF PRICE, RENTAL OR OTHER CONDITIONS, WITHDRAWAL WITHOUT NOTICE, AND TO ANY SPECIAL LISTING CONDITIONS IMPOSED BY THE PROPERTY OWNER(S). ANY PROJECTIONS, OPINIONS OR ESTIMATES ARE SUBJECT TO UNCERTAINTY AND DO NOT SIGNIFY CURRENT OR FUTURE PROPERTY PERFORMANCE. COE-PM-WEST-12/03/24

1113 - 1123 FIRST AVENUE | SEATTLE, WASHINGTON