

OFFICE/LAB SPACE FOR LEASE

1600 VALMONT WAY

RICHMOND, BC



Liam Boulton

Senior Associate
+1 604 629 5023
liam.boulton@ca.cushwake.com

Roger Leggatt

Executive Vice President
+1 604 640 5882
roger.leggatt@ca.cushwake.com

Max Zessel

Senior Vice President
+1 604 640 5824
max.zessel@ca.cushwake.com

Ethan Regan

Associate
+1 604 902 4649
ethan.regan@cushwake.com

OPPORTUNITY

1600 Valmont presents a unique chance to lease fully equipped, move-in-ready laboratory spaces complete with a tenant's choice of either fume hoods or bio safety cabinets. As the vacancy rate for lab units continue to drop below 1% in the Lower Mainland, finding built-out and equipped properties, particularly for smaller research companies, has become increasingly challenging. However, 1600 Valmont is the latest development designed to meet this demand.



FEATURES

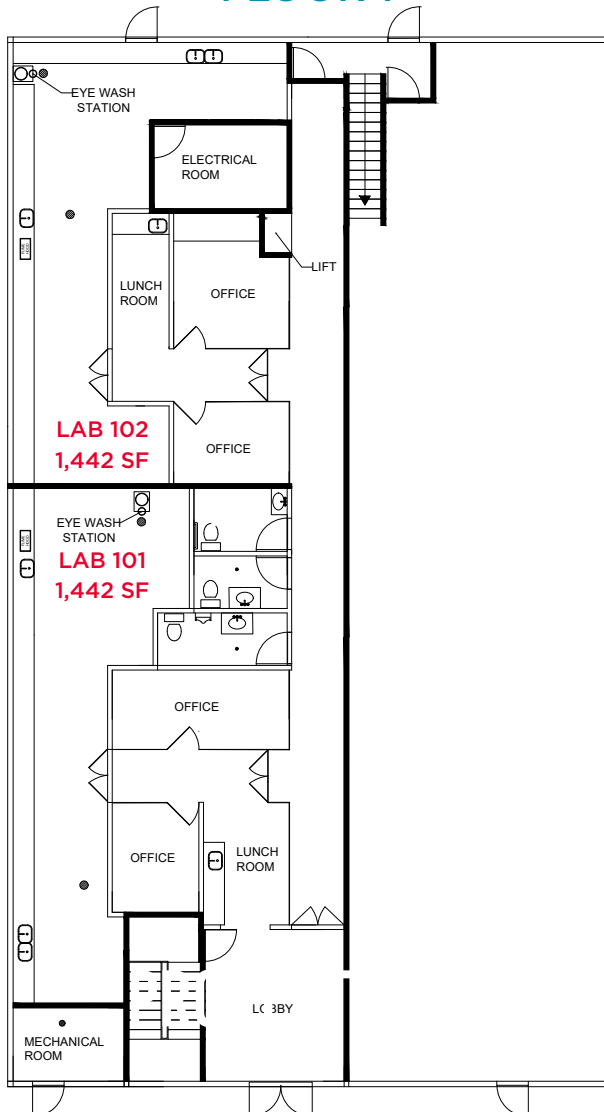
Laboratories include, but are not limited to, the following:

- Lab-grade benches, countertops, cabinets, and flooring
- Emergency eyewash and emergency shower stations
- Bio safety cabinets and chemical fume hoods available
- Large single bowl acid waste sinks, as well as standard double bowl sanitary waste sinks
- Design separation between office areas and lab areas
- Office areas include private office, dedicated washroom & kitchen areas
- Common area boardroom facilities

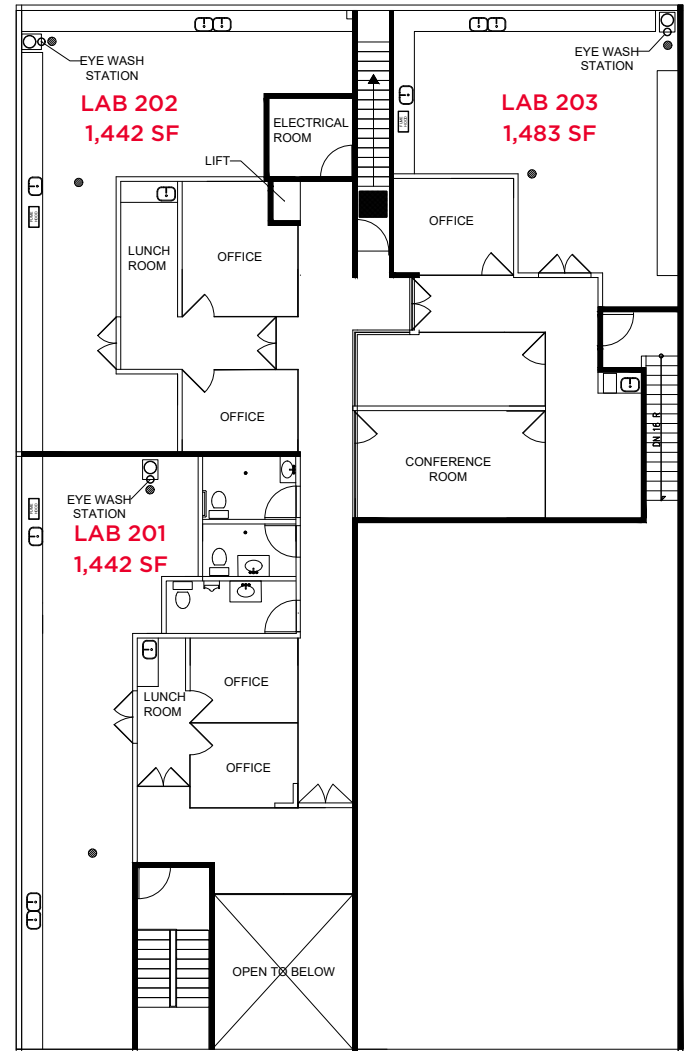
FLOOR PLAN



FLOOR 1



FLOOR 2



AVAILABILITY

- Unit 101: **LEASED**
- Unit 102: 1,442 SF
- Unit 201: 1,442 SF
- Unit 202: 1,442 SF
- Unit 203: 1,483 SF
- Units 201/202: 2,884 SF
- Units 201/202/203: 4,367 SF (Full floor unit available)
- Units 203/204: 2,785 SF (Potential future unit available)
- Units 201/202/203/204: 5,627 SF (Potential future unit available)

ASKING RATE

Please contact listing agents

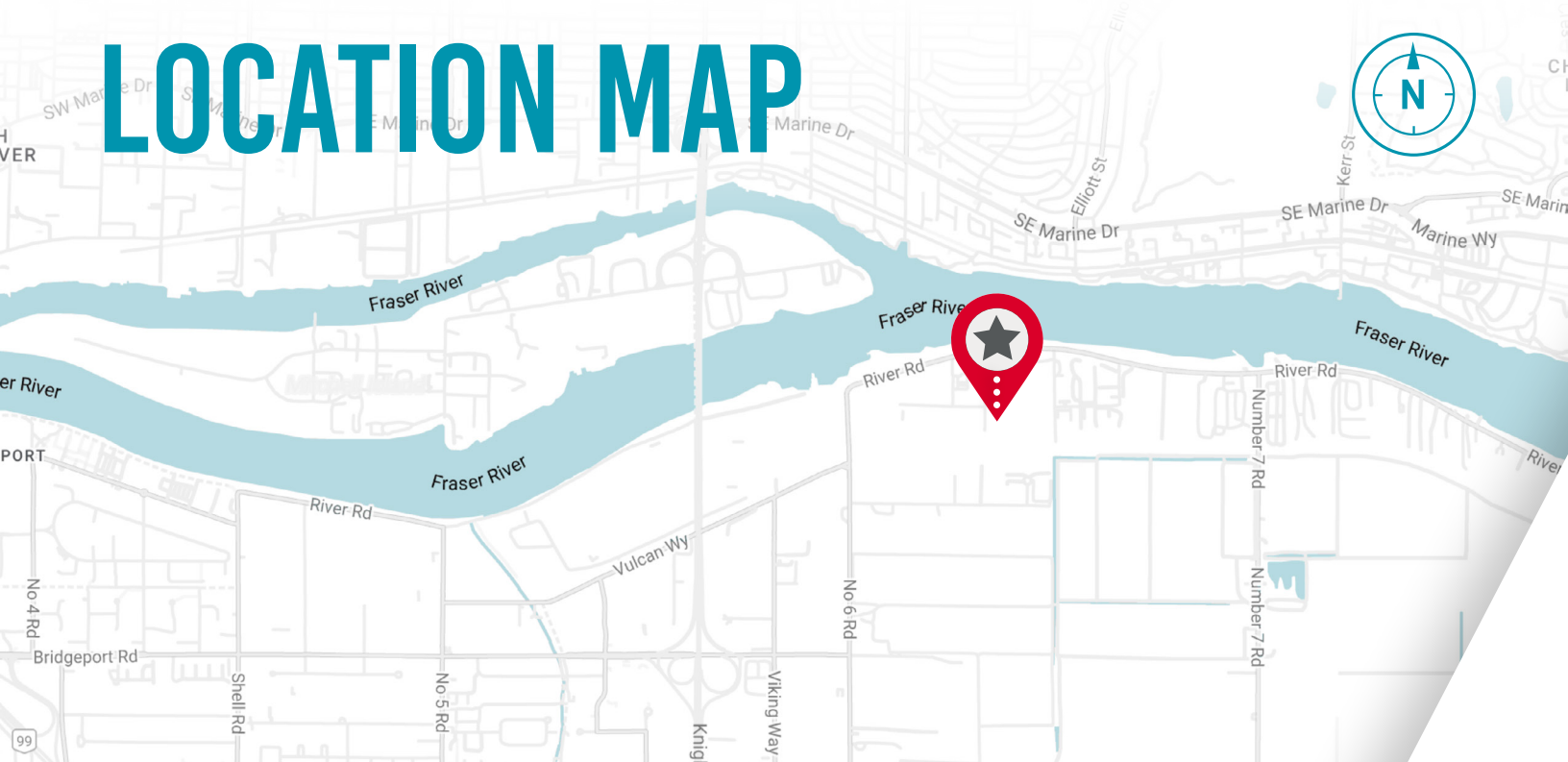
ADDITIONAL RATE

\$10.00 PSF, per annum (2024 est.)



FUTURE EXTERNAL FAÇADE RENOVATION PLANNED

LOCATION MAP



For more information, please contact:

Liam Boulton

Senior Associate

+1 604 629 5023

liam.boulton@ca.cushwake.com

Roger Leggatt

Executive Vice President

+1 604 640 5882

roger.leggatt@ca.cushwake.com

Max Zessel

Senior Vice President

+1 604 640 5824

max.zessel@ca.cushwake.com

Ethan Regan

Associate

+1 604 902 4649

ethan.regan@cushwake.com

©2024 Cushman & Wakefield. All rights reserved. The information contained in this communication is strictly confidential. This information has been obtained from sources believed to be reliable but has not been verified. NO WARRANTY OR REPRESENTATION, EXPRESS OR IMPLIED, IS MADE AS TO THE CONDITION OF THE PROPERTY (OR PROPERTIES) REFERENCED HEREIN OR AS TO THE ACCURACY OR COMPLETENESS OF THE INFORMATION CONTAINED HEREIN, AND SAME IS SUBMITTED SUBJECT TO ERRORS, OMISSIONS, CHANGE OF PRICE, RENTAL OR OTHER CONDITIONS, WITHDRAWAL WITHOUT NOTICE, AND TO ANY SPECIAL LISTING CONDITIONS IMPOSED BY THE PROPERTY OWNER(S). ANY PROJECTIONS, OPINIONS OR ESTIMATES ARE SUBJECT TO UNCERTAINTY AND DO NOT SIGNIFY CURRENT OR FUTURE PROPERTY PERFORMANCE.

