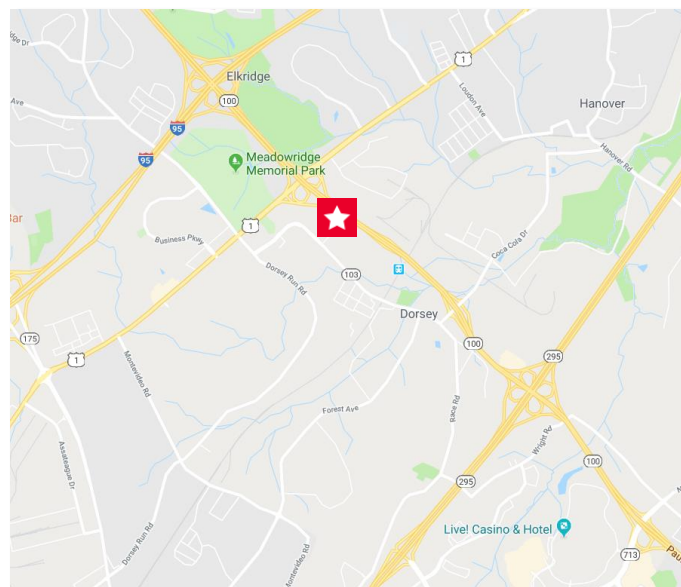




## Features

- Space Available:
  - Suite 300 - 2,354 RSF - Available Immediately
  - Suite 415 - 1,822 RSF - Available 5-1-2021
  - Suite 420 - 1,288 RSF - Available Immediately
- Availability offers prominent lobby exposure/visibility
- Located in the Dorsey Business Center on Maryland Route 100 between I-95 and I-295
- Close proximity to Fort Meade/NSA
- Ample, above market, free surfacing parking (349 spaces)
- On-site, in-building deli and other neighboring amenities within walking distance
- Minutes to BWI Airport, providing access to local, regional, national & international transportation network
- Within one mile of Arundel Mills Mall



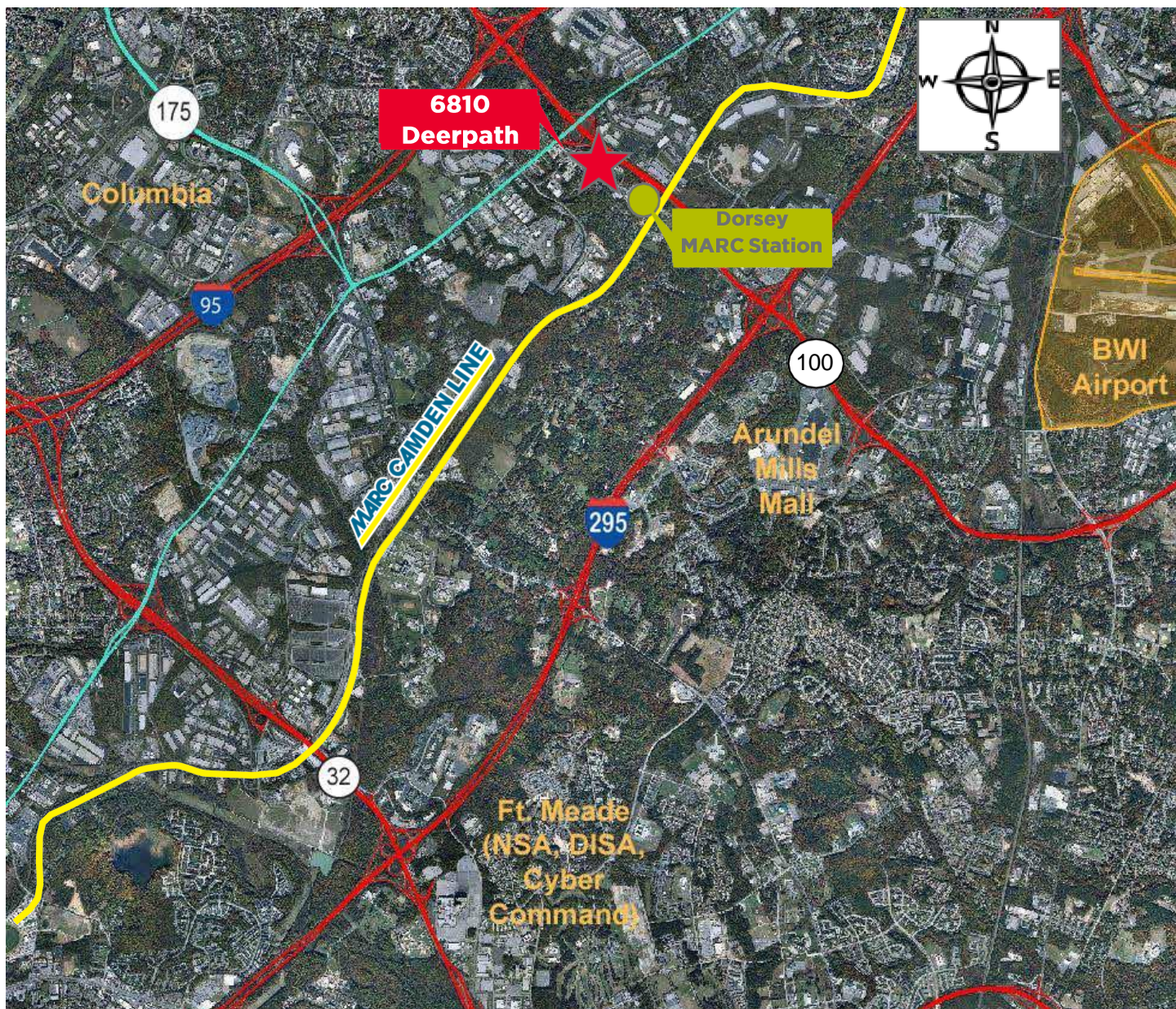
**Andrew Smith**  
 Senior Director  
 +1 410 953 6691  
[andrew.j.smith@cushwake.com](mailto:andrew.j.smith@cushwake.com)

**Scott Matthews**  
 Senior Director  
 +1 410 953 6697  
[scott.matthews@cushwake.com](mailto:scott.matthews@cushwake.com)

**Brian Smith**  
 Associate  
 +1 410 347 7819  
[brian.smith2@cushwake.com](mailto:brian.smith2@cushwake.com)



**AERIAL**



One East Pratt Street, Suite 700  
Baltimore, MD 21202  
main +1 410 752 4285  
fax +1 410 576 9031  
[www.cushmanwakefield.com](http://www.cushmanwakefield.com)

**Andrew Smith**  
Senior Director  
+1 410 953 6691  
[andrew.j.smith@cushwake.com](mailto:andrew.j.smith@cushwake.com)

**Scott Matthews**  
Senior Director  
+1 410 953 6697  
[scott.matthews@cushwake.com](mailto:scott.matthews@cushwake.com)

**Brian Smith**  
Associate  
+1 410 347 7819  
[brian.smith2@cushwake.com](mailto:brian.smith2@cushwake.com)