



750

FIRST STREET NE

750 First Street NE, Washington, DC



BUILDING HIGHLIGHTS | 750 FIRST STREET NE, WASHINGTON, DC

- Within walking distance of the Capitol, House, and Senate office buildings; easy access to major commuter arteries
- Less than one block from Union Station shops, restaurants and Metro Station (Red Line)
- Rooftop terrace with impressive views of the Capitol, Washington Monument, and Union Station
- Large rooftop conference center and rooftop terrace available for events/conferences
- Additional tenant-only conference room on the 9th floor (up to 50 attendees)
- Parking ratio 1/1,500 SF
- Award winning state-of-the-art energy management system resulting in reduced operating expenses
- LEED Gold Certified and Energy Star Rated
- Property manager on-site & bike storage
- On-Site Daycare Center & Deli

NEIGHBORHOOD AMENITIES | 750 FIRST STREET NE, WASHINGTON, DC



RESTAURANTS

- 1 Au Bon Pain
- 2 Subway
- 3 Starbucks
- 4 Chicken Rico
- 5 Lucky's Cafe
- 6 Kelly's Irish Times
- 7 The Dubliner
- 8 Corner Bakery
- 9 Union Station Restaurants:
 - Chick-fil-A
 - Cava
 - Chop't
 - Shake Shack
 - Aloha Poke
 - Pret a Manger
 - Pot Belly
 - +30 more
- 10 Casey's Coffee (on-site)

BANKS

- 1 Citibank (ATM)
- 2 SunTrust (ATM)
- 3 Bank of America (ATM)
- 4 Capitol One (ATM)

SHOPPING

- 1 Wal-Mart
- 2 Union Station Shopping:
 - H&M
 - USPS
 - The Body Shop
 - MAC Cosmetics
 - Ann Taylor
 - Jos. A Bank
 - Heydari
 - Walgreens
 - Western Union
 - Andrew's Ties
 - Victoria's Secret

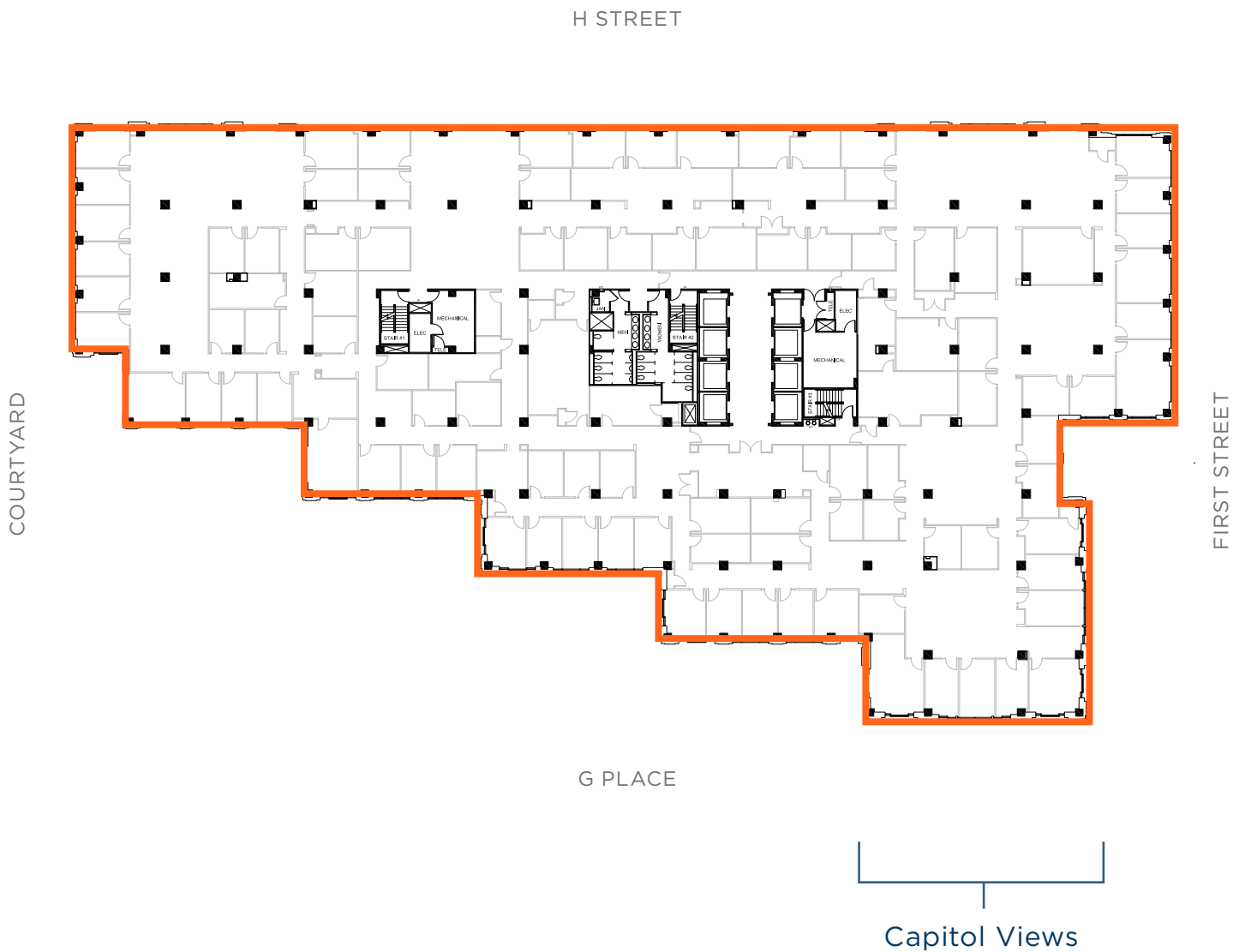
TRANSPORTATION

- 1 Metro Red Line
- 2 Amtrak
- 3 MARC
- 4 Capital Bikeshare

5TH FLOOR | 37,019 SF AVAILABLE

SUITE 500: 37,019 SF

Available Now | 3 to 10 Year Term | \$49.00-\$52.00 PSF Full Service



For More Leasing Information Contact:

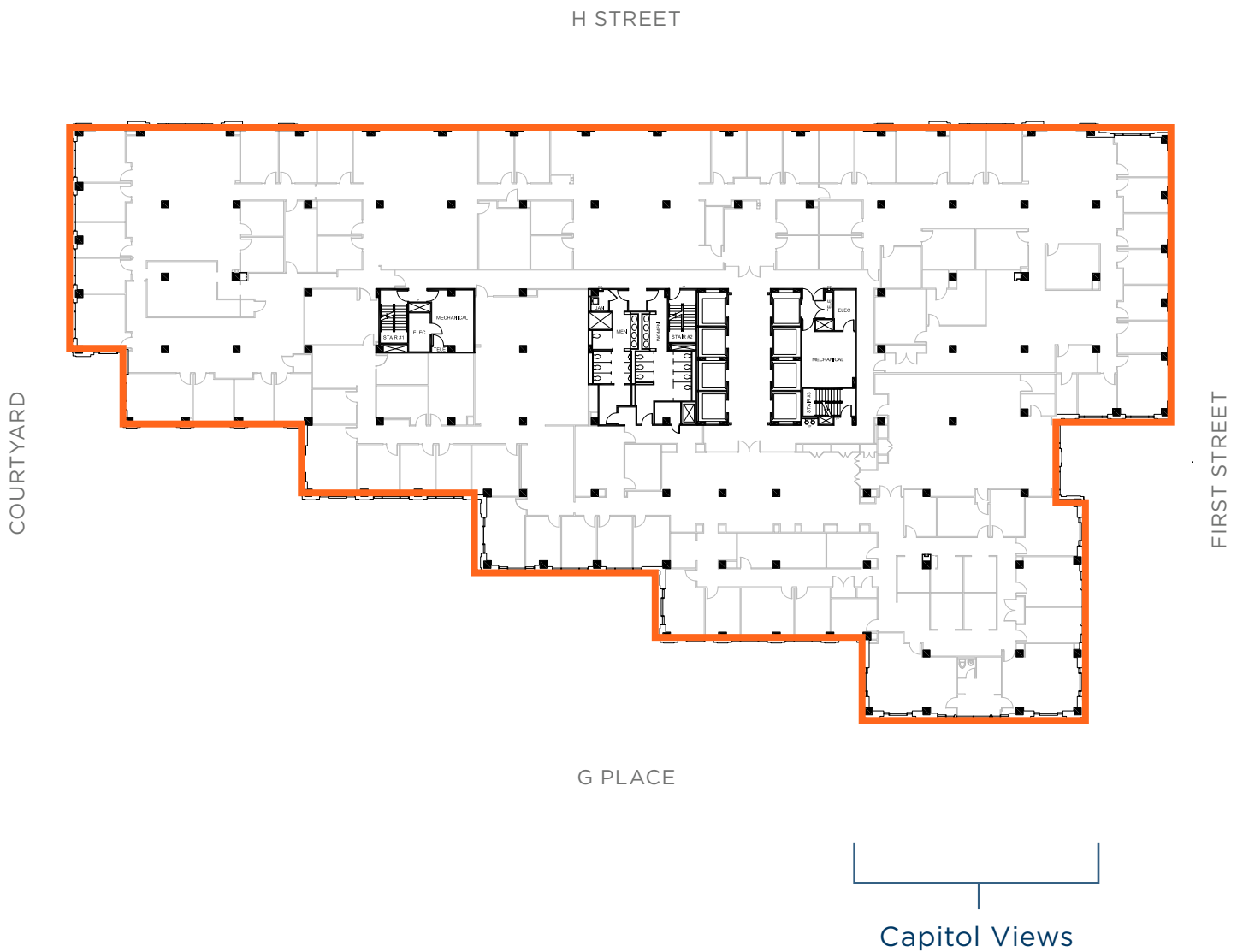
Kurt W. Richter | Vice Chairman
Direct: +1 202 266 1158 | Mobile: +1 202 669 4114 | kurt.richter@cushwake.com



6TH FLOOR | 37,019 SF AVAILABLE

SUITE 600: 37,019 SF

Available Now | 3 to 10 Year Term | \$49.00-\$52.00 PSF Full Service



For More Leasing Information Contact:

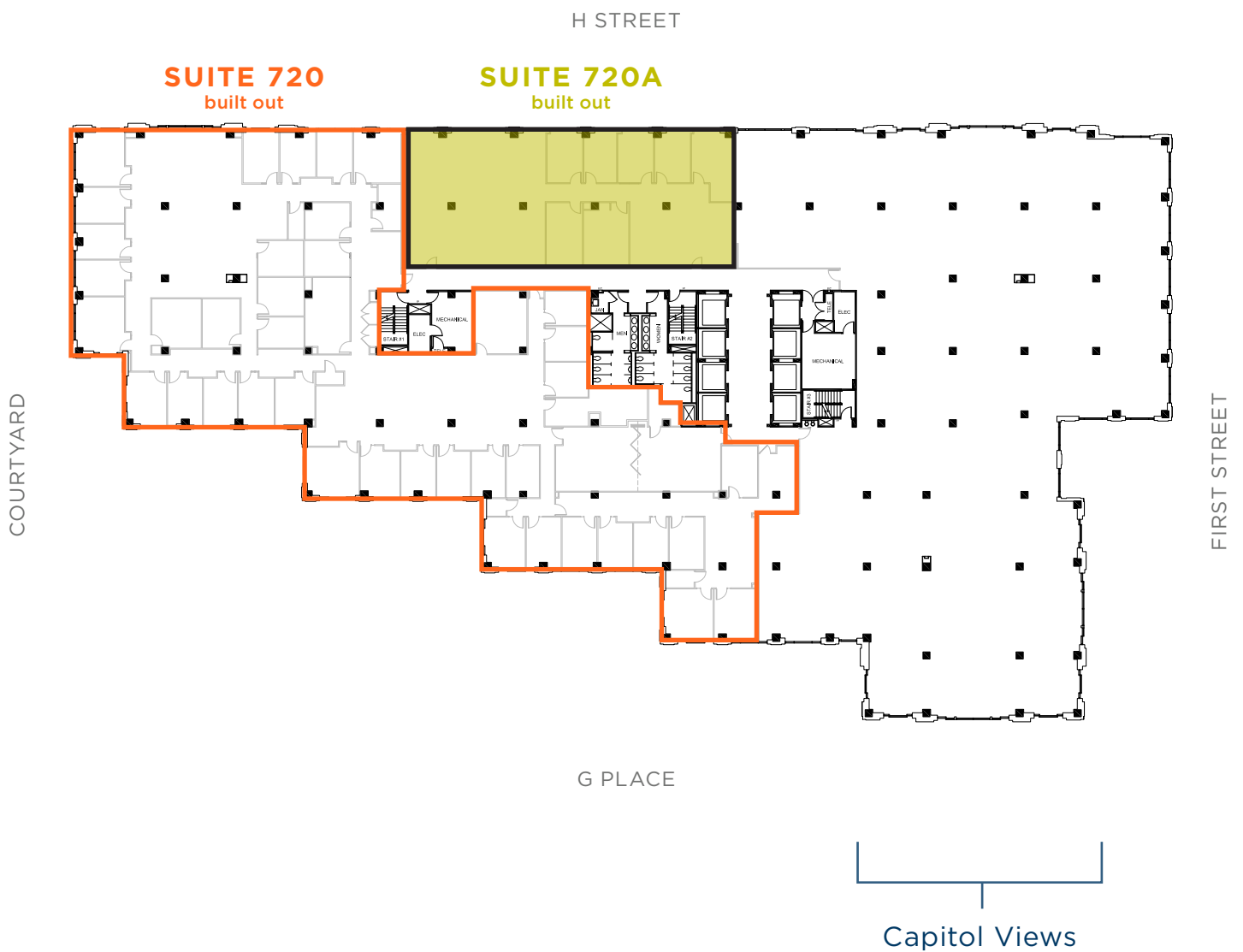
Kurt W. Richter | Vice Chairman
Direct: +1 202 266 1158 | Mobile: +1 202 669 4114 | kurt.richter@cushwake.com



7TH FLOOR | 23,620 SF AVAILABLE

SUITE 720: 20,020 SF
SUITE 720A: 3,600 SF

Available Now | 3 to 10 Year Term | \$49.00-\$52.00 PSF Full Service



For More Leasing Information Contact:

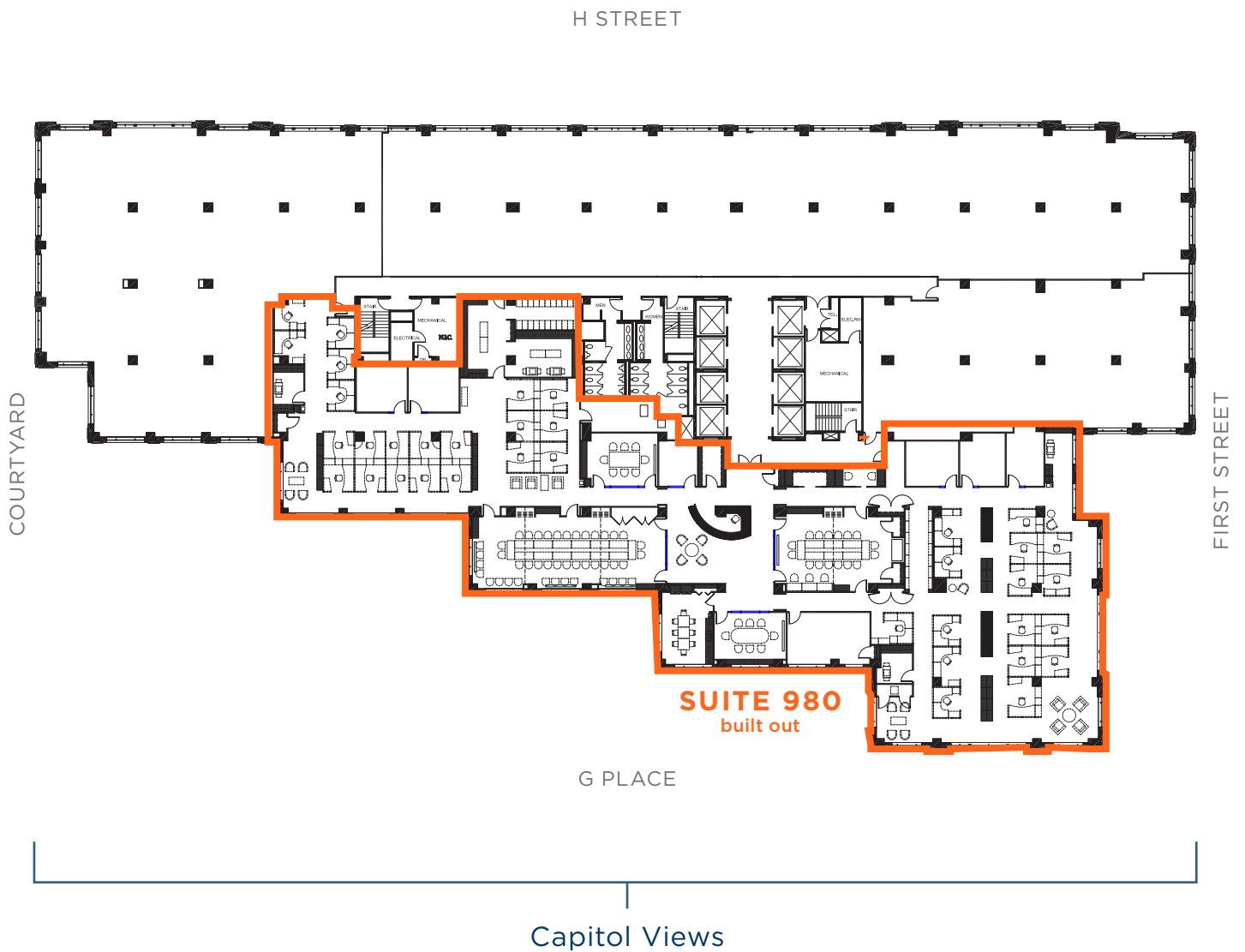
Kurt W. Richter | Vice Chairman
Direct: +1 202 266 1158 | Mobile: +1 202 669 4114 | kurt.richter@cushwake.com



9TH FLOOR | 15,962 SF AVAILABLE

SUITE 980: 15,962 SF

Available Now | 3 to 10 Year Term | \$49.00-\$52.00 PSF Full Service



For More Leasing Information Contact:

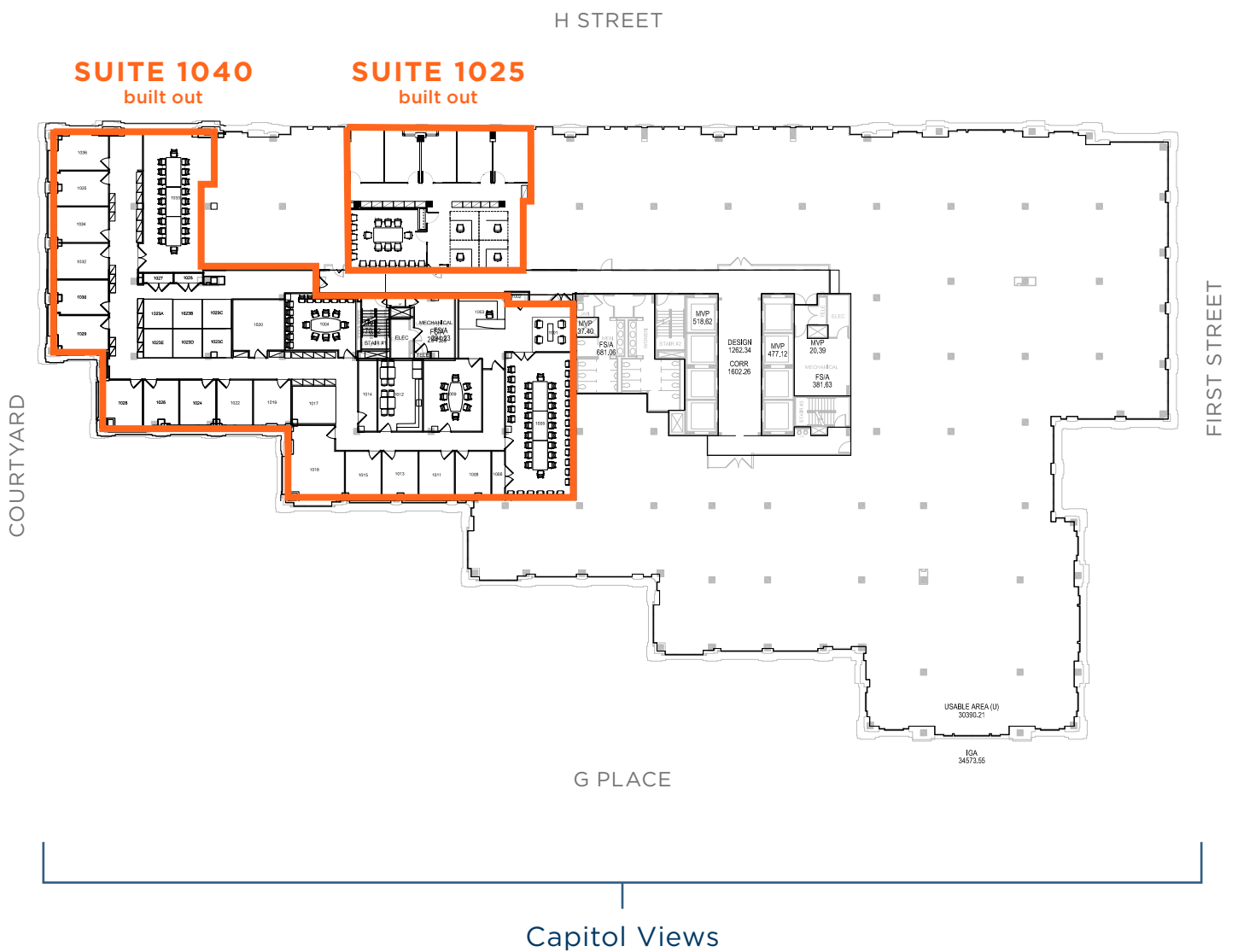
Kurt W. Richter | Vice Chairman
Direct: +1 202 266 1158 | Mobile: +1 202 669 4114 | kurt.richter@cushwake.com



10TH FLOOR | 12,775 SF AVAILABLE

SUITE 1040: 10,550 SF
SUITE 1025: 2,225 SF

Available 1/1/2020 | 3 to 10 Year Term | \$49.00-\$52.00 PSF Full Service



For More Leasing Information Contact:

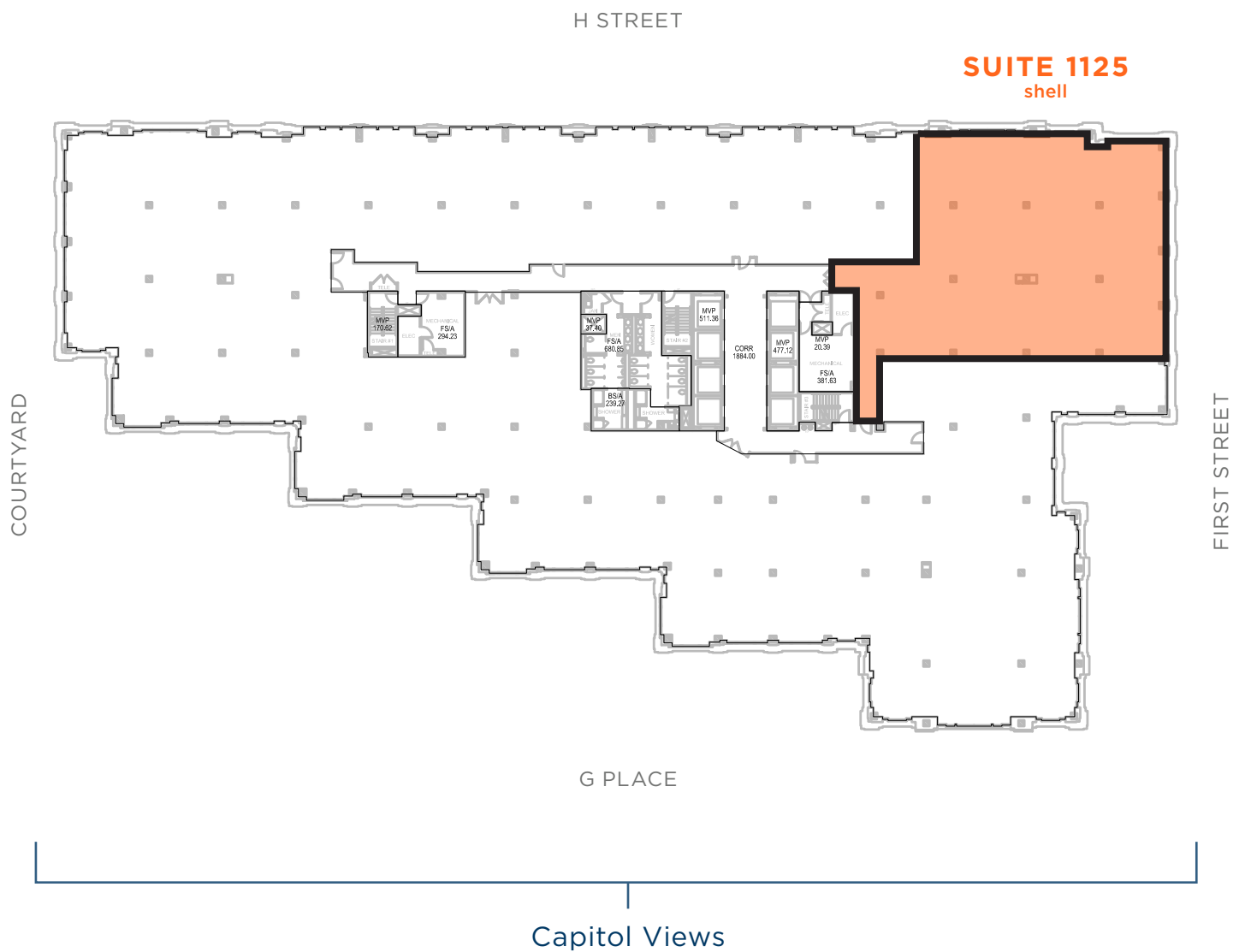
Kurt W. Richter | Vice Chairman
Direct: +1 202 266 1158 | Mobile: +1 202 669 4114 | kurt.richter@cushwake.com



11TH FLOOR | 5,500 SF AVAILABLE

SUITE 1125: 5,500 SF

Available Now | 3 to 10 Year Term | \$49.00-\$52.00 PSF Full Service



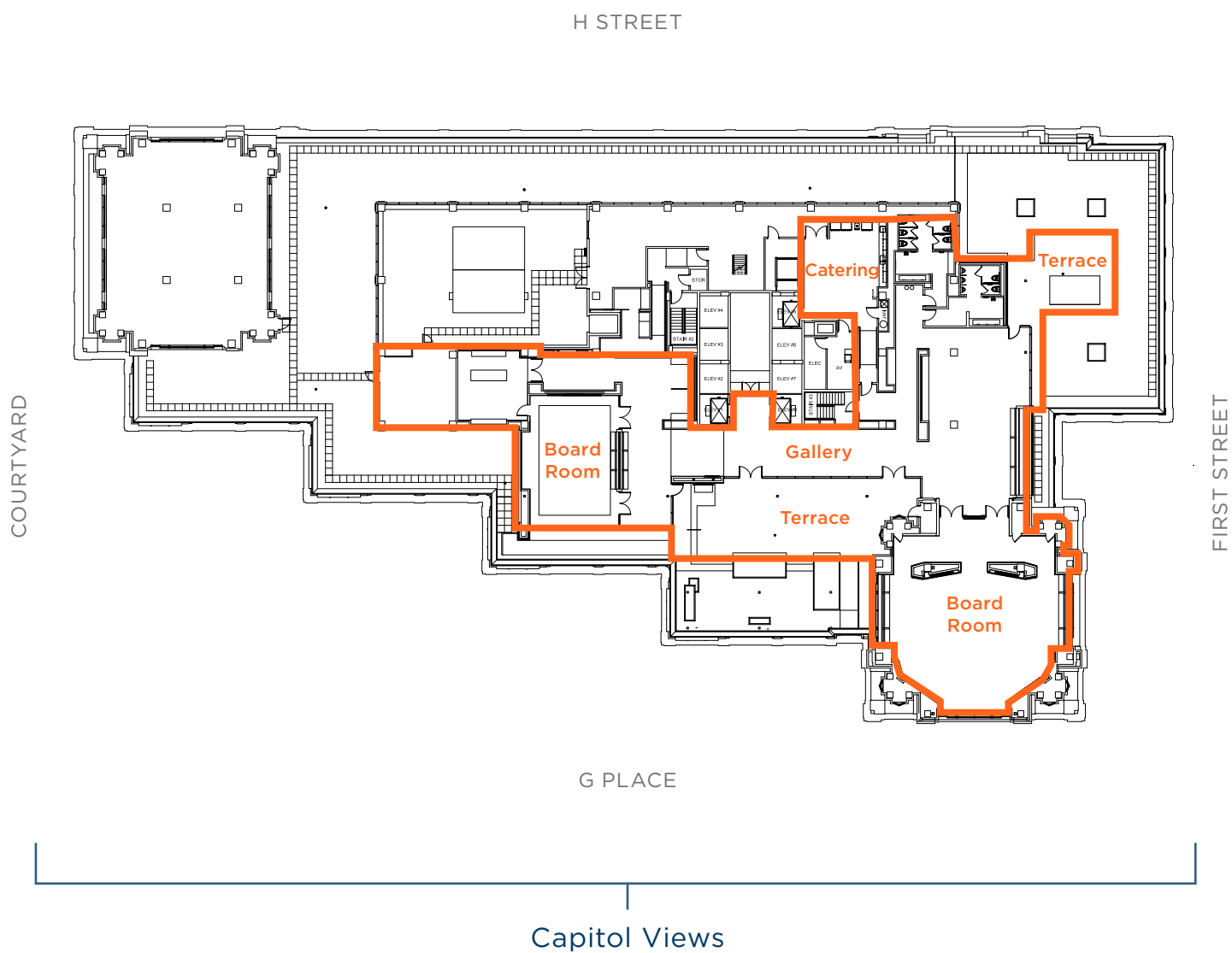
For More Leasing Information Contact:

Kurt W. Richter | Vice Chairman
Direct: +1 202 266 1158 | Mobile: +1 202 669 4114 | kurt.richter@cushwake.com



CONFERENCE CENTER: 12,042 SF

Available Now | 3 to 10 Year Term | Asking Rent Negotiable



For More Leasing Information Contact:

Kurt W. Richter | Vice Chairman
Direct: +1 202 266 1158 | Mobile: +1 202 669 4114 | kurt.richter@cushwake.com



For More Leasing Information Contact:

Kurt W. Richter | Vice Chairman

Direct: +1 202 266 1158 | Mobile: +1 202 669 4114 | kurt.richter@cushwake.com