

**hullmark**

RADIATOR

OFFICE SPACE FOR LEASE  
340 - 370 DUFFERIN STREET



**CUSHMAN &  
WAKEFIELD**



TABLE OF CONTENTS

3

Property Overview

5

Available Space

6

Floor Plans and Information

18

Transit & Amenities Map

20

Parkdale Neighbourhood Overview

R  
A  
D  
I  
A  
T  
O  
R

PROPERTY OVERVIEW

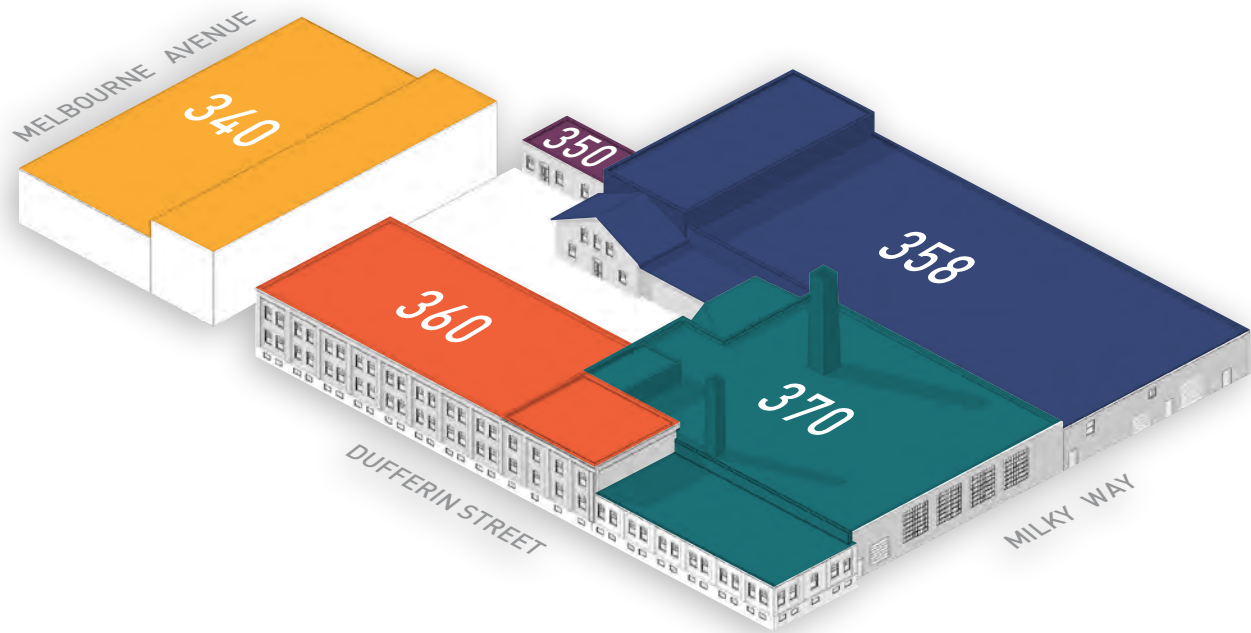
KEY HIGHLIGHTS

- Creative and flexible leasing opportunities, including office, studio, retail and light-industrial spaces.
- Radiator and the Parkdale neighbourhood have become a destination of choice for residents and visitors alike, continuing to attract artists, innovators, and young professionals who are attracted to the art, culture and amenities in the area.
- Institutionally managed and recently renovated complex with upgraded tenant common areas and spacious courtyard patio.
- Lower gross occupancy costs relative to similar options in Downtown West & Liberty Village, with additional rents estimated at \$14.50 PSF for 2024 (excluding in-suite janitorial).
- Current existing complex amenities include yoga studio, physiotherapy clinic, and more within the vibrant Parkdale area.





PROPERTY OVERVIEW



Address: 340 - 370 Dufferin Street

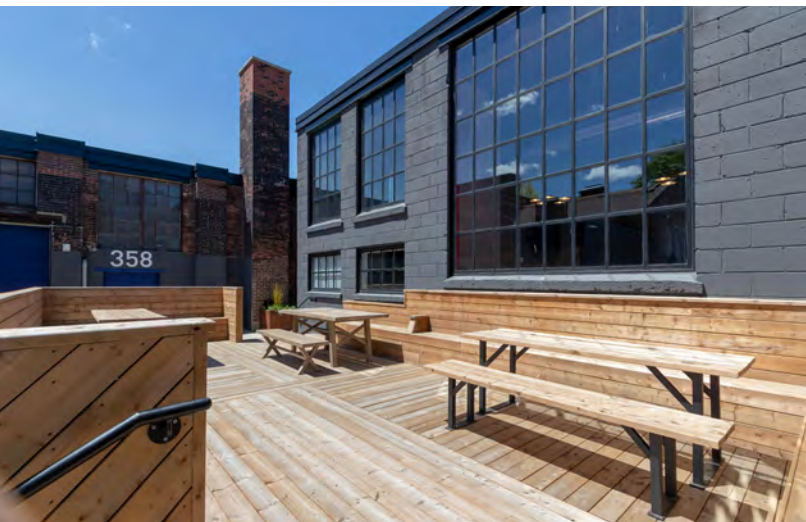
Building Size: 93,016 SF

Parking Spaces: 30

Clear Heights: 9-20'

Net Rent: Contact Listing Agents to Discuss

Additional Rent: \$14.50 PSF (est. 2024)  
(Excluding in-suite janitorial)



Communal Tenant Patio



Mural by @rafaelsliks\_



340  
LEASED

350  
LEASED

358  
SUITE 203 & 204 - 1,646 SF

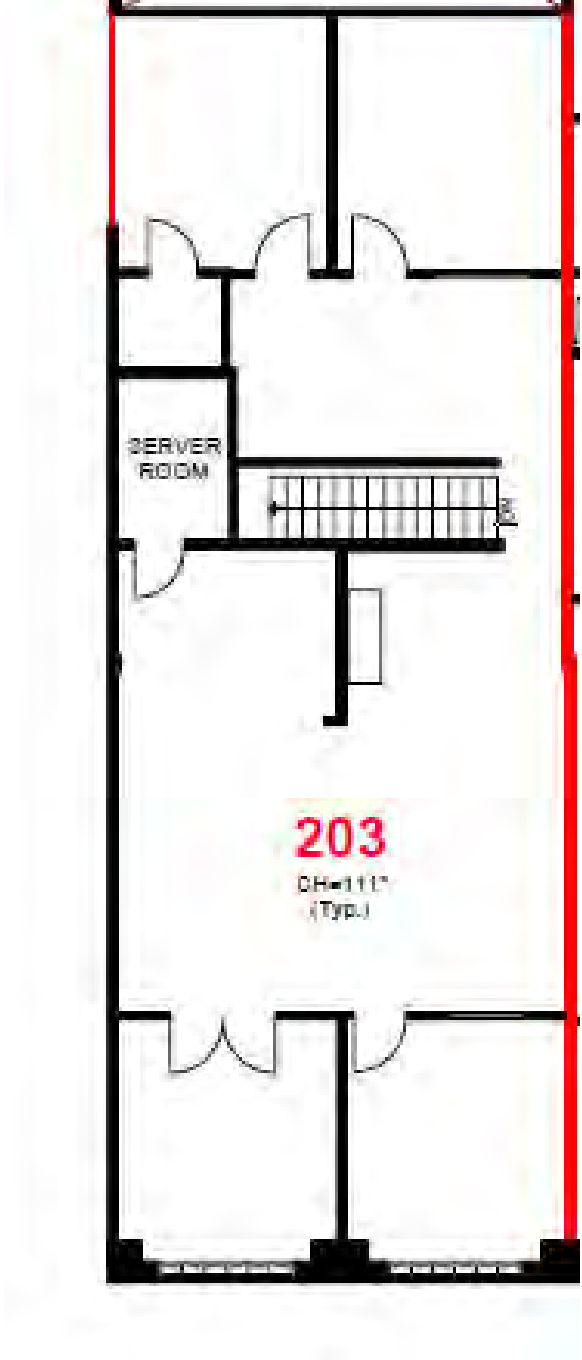
360  
SUITE 105 - 844 SF  
SUITE 201 - 2,108 SF  
SUITE 203 - 2,744 SF (Sublease)  
SUITE 204 - 1,808 SF

370  
LEASED

Net Rent:  
Please Call Listing Agents to Discuss

Additional Rent:  
\$14.50 PSF (est. 2024)  
(Excluding in-suite janitorial)

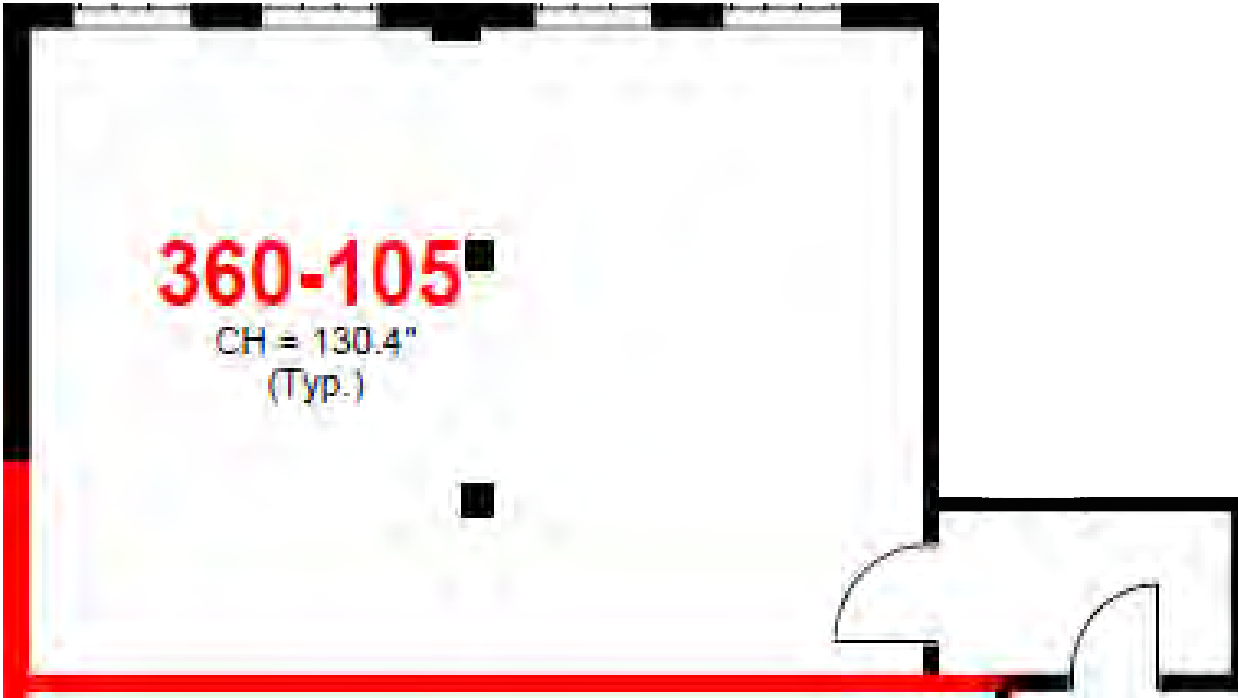




- o Second floor walk up space
- o Built out with four enclosed offices/meeting rooms, kitchenette, server room and open workspace.
- o Skylights and exterior windows throughout
- o Available Immediately
- o Lease Terms from 1-5 Years

[Click Here to View Photos](#)

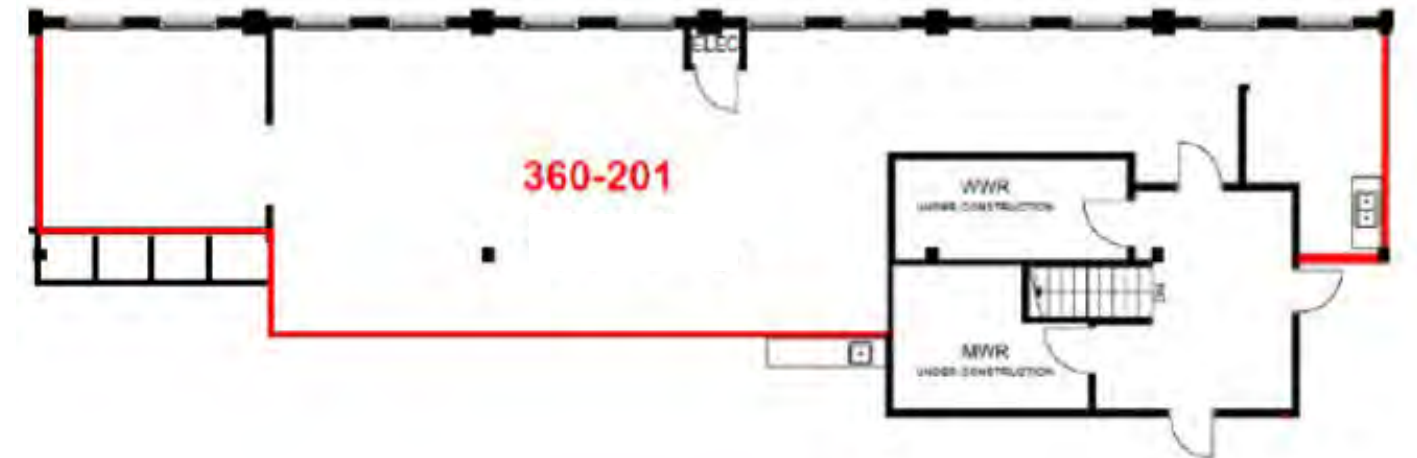
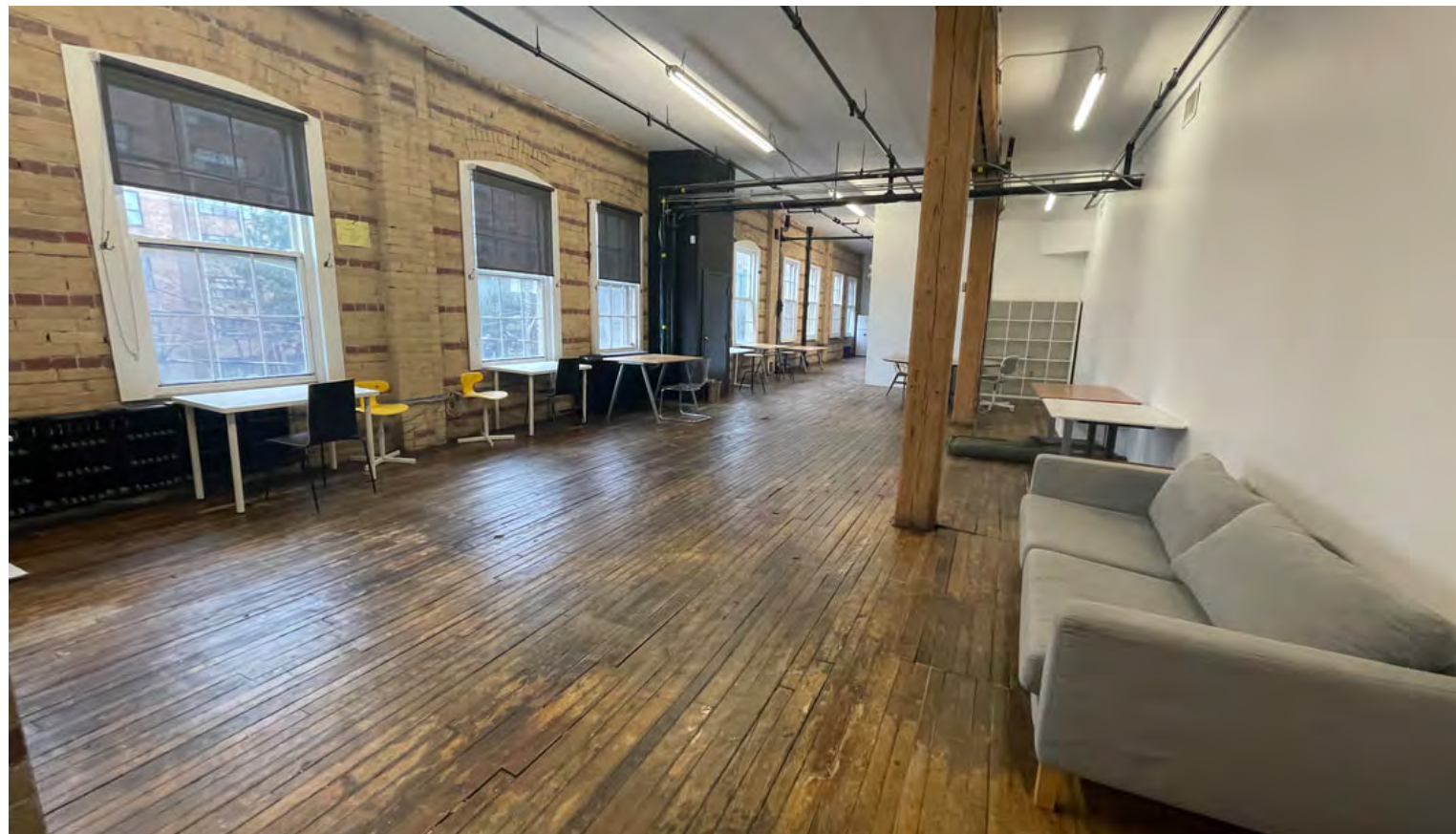




- o Bright first floor brick and beam space
- o Built out with kitchenette and open area
- o Available immediately
- o Lease Terms from 1-5 years

[Click Here to View Photos](#)

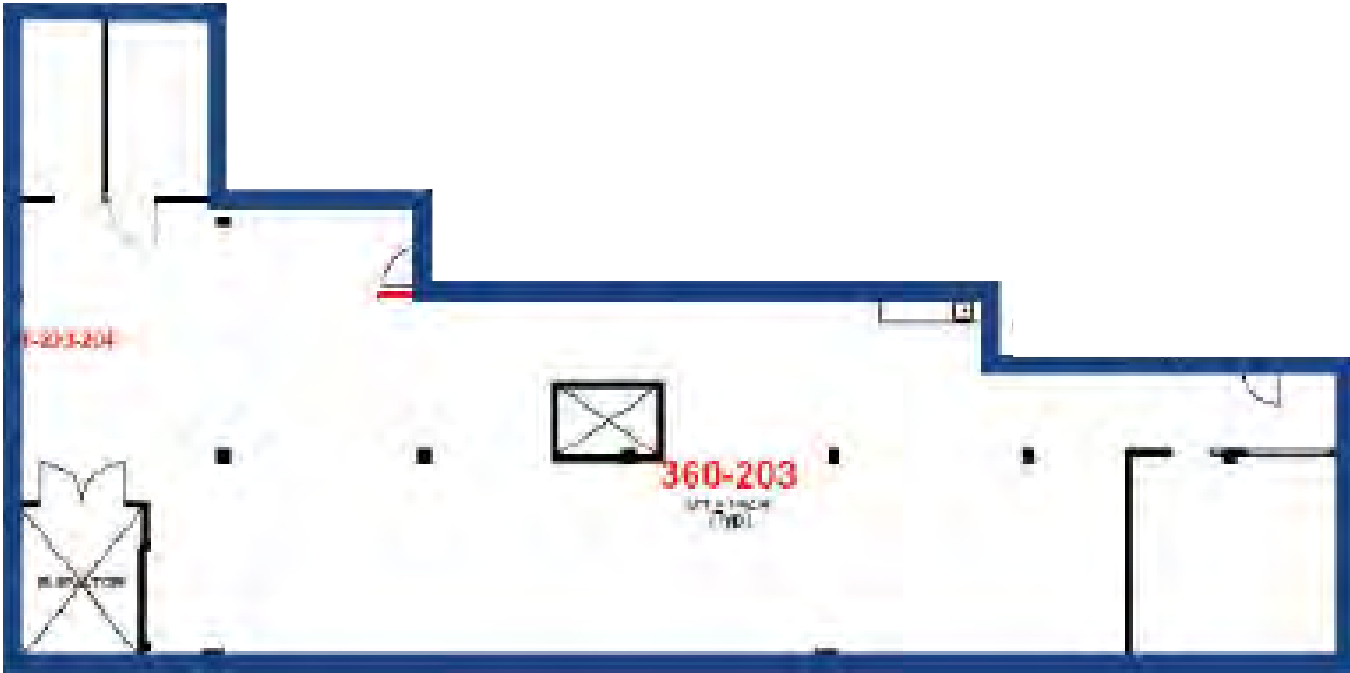
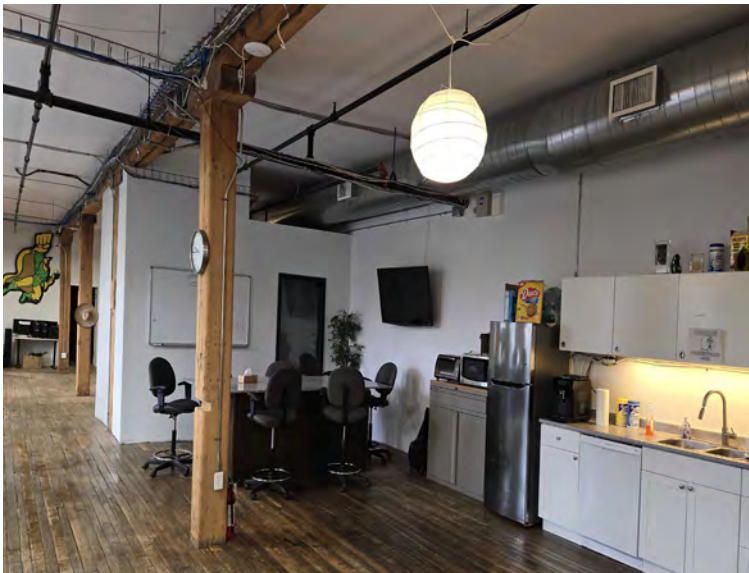
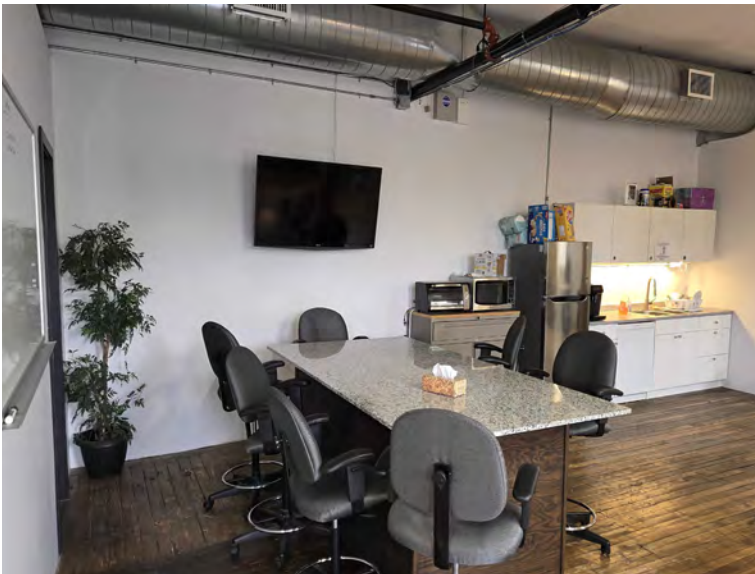




- o Bright brick and beam walk up second floor space
- o High-quality leasehold improvements, plenty of natural light
- o Built out with large kitchenette, one large enclosed private office/meeting room and large open workspace area
- o Available with 30 days' notice
- o Lease Terms from 1-5 Years

[Click Here to View Photos](#)

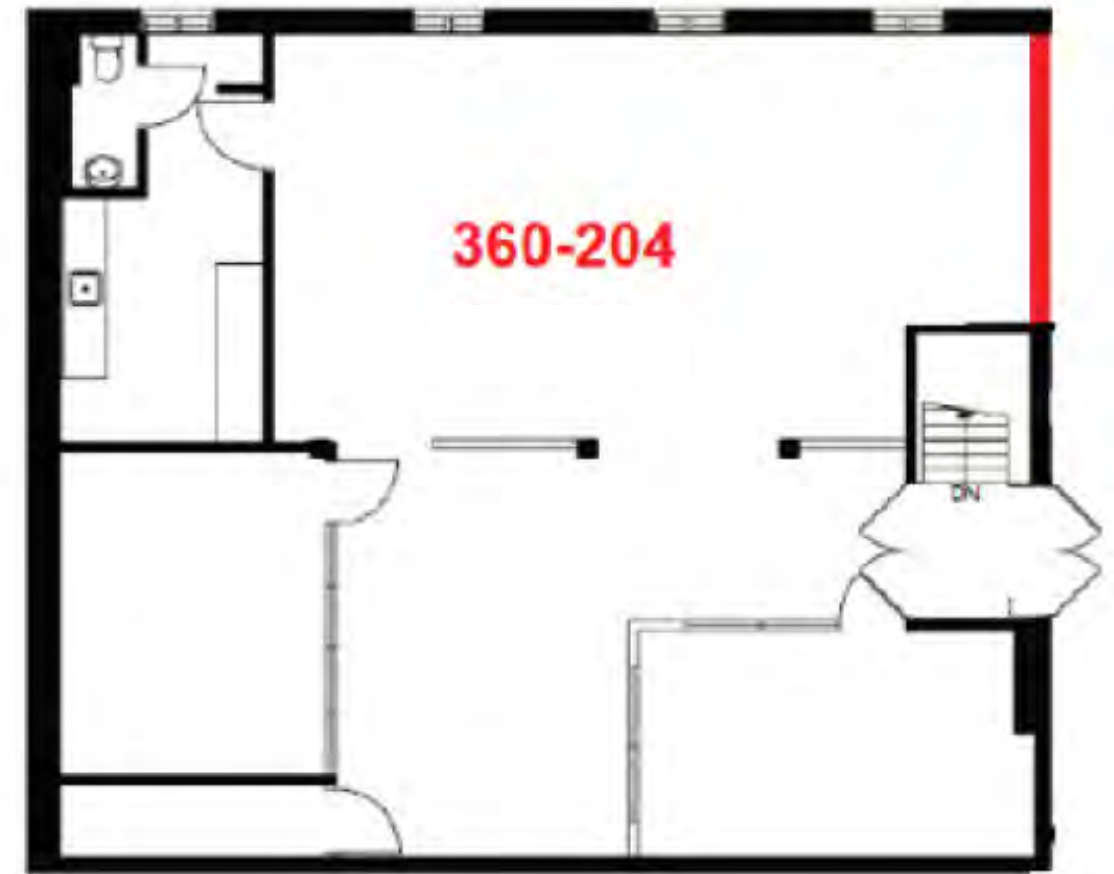
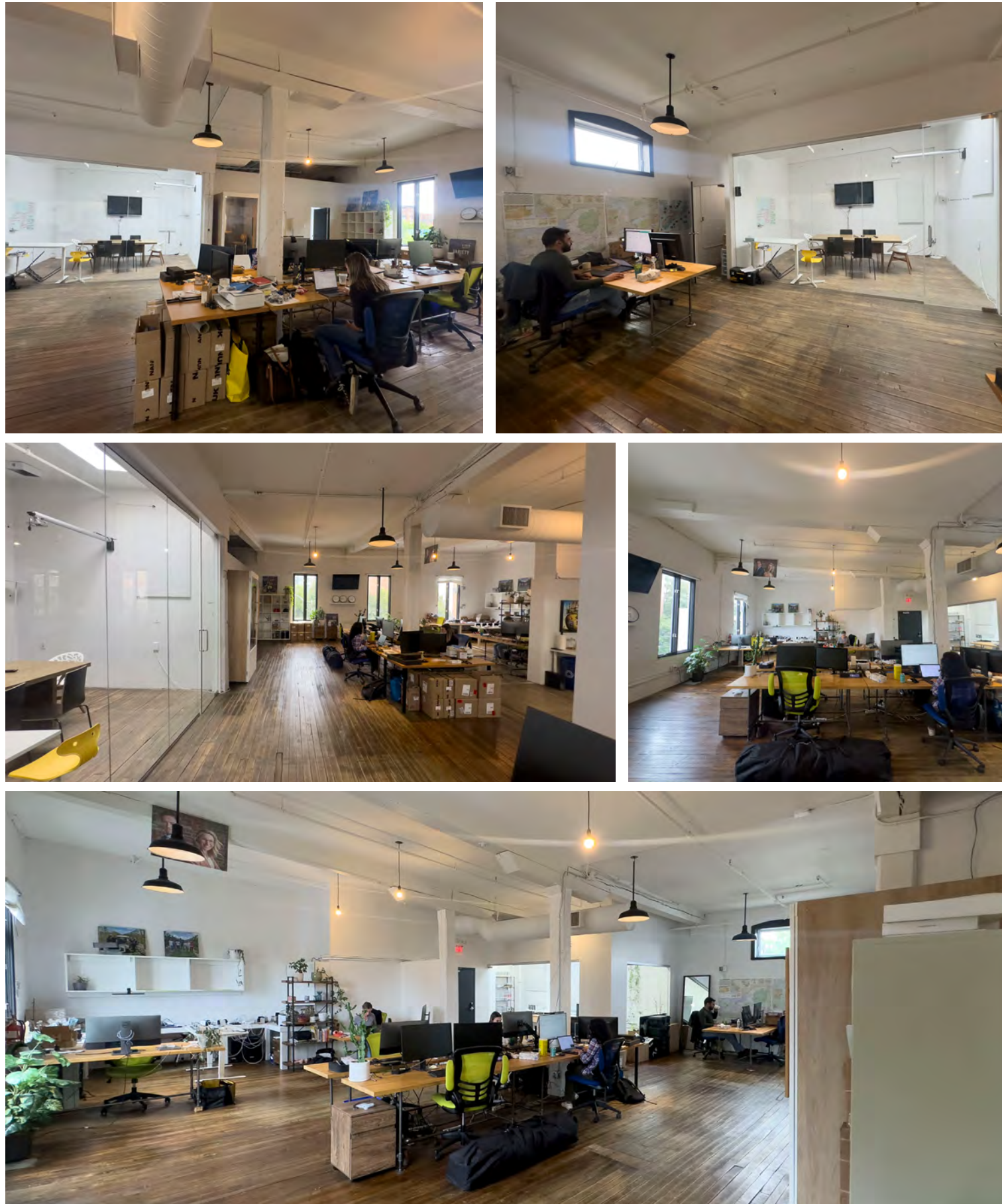




- o Sublease until March 31, 2028
- o Bright brick and beam walk up second floor space
- o Built out with large kitchenette, boardroom, 3 call rooms, 2 offices, and open area
- o Available immediately

[Click Here to View Photos](#)





- o Bright brick and beam walk up second floor space
- o High-quality leasehold improvements, plenty of natural light
- o Built out with two large offices, kitchenette, in-suite washroom, and ample open area
- o Lease Terms from 1-5 years





RESTAURANT / COFFEE

- 1. Capital Espresso
- 2. Shameful Tiki Room
- 3. Sam James Coffee Bar-Brock
- 4. Lovebird
- 5. Rustic Cosmo Cafe
- 6. Starbucks
- 7. Le Phenix
- 8. Rhino Bar & Grill
- 9. Bom Dia Bakery
- 10. Matt's Burger Lab

PARKS / ENTERTAINMENT

- 1. McCormick Park
- 2. Parkdale Amphitheater
- 3. Dunn Ave. Parkette
- 4. Masaryk Park
- 5. Melbourne Ave. Parkette
- 6. Rita Cox Park

RETAIL

- 1. Canadian Tire
- 2. Pet Smart
- 3. Winners

GROCERY

- 1. Metro
- 2. FreshCo

FITNESS

- 1. Strong
- 2. The Boxing Loft
- 3. Embrace Yoga & Health
- 3. Good Space Yoga
- 4. F45 Parkdale
- 5. Body by Chosen
- 6. Atom Athletics
- 7. Goodlife


CHILD CARE

- 1. More than Child's Play
- 2. Queen Street Child Care Centre
- 3. Parkdale Early Learning Centre
- 4. Sunflower House Childcare
- 5. BonAdventure Child Care Centre
- 6. Liberty Village Home
- 7. Kids Company

HOTEL

- 1. Gladstone Hotel
- 2. The Drake Hotel

TRANSIT TIMES

 **DUFFERIN STATION**  
**OSGOODE STATION**  
**UNION STATION**

11 mins via **Dufferin Bus Line**  
16 mins on **Queen Street Car**  
23 mins via **Dufferin Bus Line**  
to Lakeshore West GO Line



**GARDINER EXPRESSWAY**

6 mins via car



**TRINITY BELLWOODS**  
**LIBERTY VILLAGE**

6 mins via bike  
4 mins via bike





PARKDALE OVERVIEW

Parkdale Village has experienced transition many times since its incorporation in 1889. Most recently the neighbourhood has seen an influx of artists and young professionals who have been attracted to the art, culture and amenities in the area. The diversity and creativity of the area has led to a thriving neighbourhood and destination of choice for its estimated 50,000 residents and visitors alike. Parkdale’s business owners and residents continue to work together to engage the neighbourhood through numerous community initiatives. Hullmark is passionate about the ongoing transformation of Parkdale and is committed to making the Radiator a business, social and creative hub for the neighbourhood.



HULLMARK SUMMER PARTY







619 QUEEN ST W



1000 QUEEN ST W



230-240 RICHMOND ST W



545 KING ST W



TORONTO CARPET FACTORY



772 DOVERCOURT RD



60 ATLANTIC AVE



80 ATLANTIC AVE



100 BROADVIEW AVE

Hullmark  
474 Wellington Street West, Suite 200  
Toronto, ON M5V 1E3  
t: 416.510.1700  
[www.hullmark.ca](http://www.hullmark.ca)  
[www.instagram.com/hullmarkto](https://www.instagram.com/hullmarkto)

Cushman & Wakefield ULC, Brokerage  
161 Bay Street, Suite 1500  
P.O. Box 602  
Toronto, ON M5J 2S1  
[www.cushmanwakefield.com](http://www.cushmanwakefield.com)

Contact

**Lauren Luchini\***  
Associate Vice President  
t: 416.359.2553  
[lauren.luchini@cushwake.com](mailto:lauren.luchini@cushwake.com)

**Brendan Shea\***  
Associate  
t: 905.501.6426  
[brendan.shea@cushwake.com](mailto:brendan.shea@cushwake.com)

**Matthew Stesco\***  
Vice President  
t: 416.359.2353  
[matthew.stesco@cushwake.com](mailto:matthew.stesco@cushwake.com)

©2024 Cushman & Wakefield ULC. All rights reserved. The information contained in this communication is strictly confidential. This information has been obtained from sources believed to be reliable but has not been verified. No warranty or representation, express or implied, is made as to the condition of the property (or properties) referenced herein or as to the accuracy or completeness of the information contained herein, and same is submitted subject to errors, omissions, change of price, rental or other conditions, withdrawal without notice, and to any special listing conditions imposed by the property owner(s). Any projections, opinions or estimates are subject to uncertainty and do not signify current or future property performance. \*Sales Representative