

OFFICE FOR LEASE 229 YONGE STREET



CHARACTER OFFICES
ON THE SUBWAY LINE
2,412 SF TO 12,122 SF AVAILABLE



CLARKE STRUTHERS*
Vice President
416 359 2451
clarke.struthers@cushwake.com

RILEY LITTLEJOHN*
Senior Associate
416 359 2444
riley.littlejohn@cushwake.com

CUSHMAN & WAKEFIELD ULC, BROKERAGE
161 Bay Street, Suite 1500
Toronto, M5J 2S1
cushmanwakefield.com

OFFICE FOR LEASE

229 YONGE STREET



PROPERTY SUMMARY

229 Yonge Street is conveniently located along the Yonge Street corridor.

This fully renovated heritage building has large windows offering great natural light to the desired loft style office environment.

DETAILS

AVAILABLE SPACE:

Suite 300: 9,257 SF (Available April 1, 2025)

Suite 305: 2,865 SF*

Corner suite with ample natural light throughout. Large open space with a mix of breakout rooms and kitchenette.

*Contiguous for a total of 12,122 SF

Suite 400: 9,156 SF (Available July 1, 2025)

Former co-working offices with ample private offices. Landlord is open to similar uses and/or providing desired modifications.

Suite 500: 3,256 SF

Extremely well-appointed offices with elevator exposure and ample natural light. Facing Yonge Street & Dundas Square. Private patio overlooking Yonge & Dundas Square. A must see opportunity

Suite 502: 2,412 SF

Reception, 12 person meeting room, 6 person meeting room, open area, lunch room and server room

ASKING RATE:

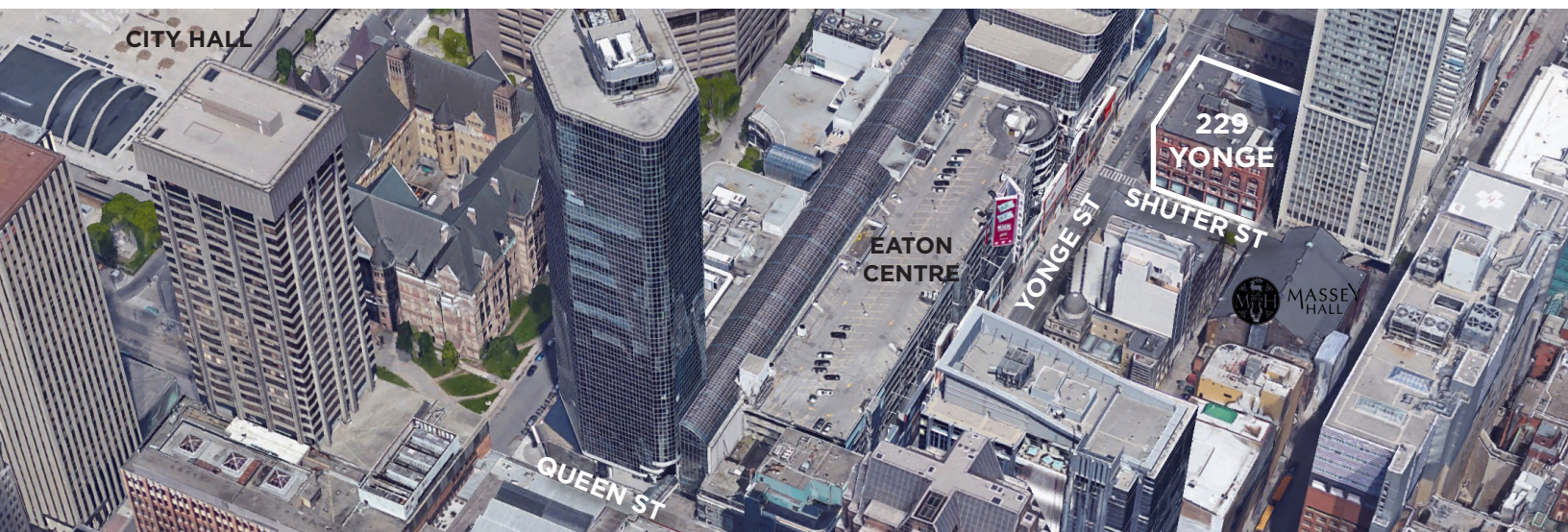
Call to discuss

ADDITIONAL RATE:

\$24.50 PSF (2024 Est.)
(in-suite hydro and janitorial included)

TERM:

3 - 10 Years



FOR MORE INFORMATION, PLEASE CONTACT:

CLARKE STRUTHERS*

Vice President
416 359 2451
clarke.struthers@cushwake.com

RILEY LITTLEJOHN*

Senior Associate
416 359 2444
riley.littlejohn@cushwake.com

CUSHMAN & WAKEFIELD ULC, BROKERAGE

161 Bay Street, Suite 1500
Toronto, M5J 2S1
cushmanwakefield.com

Cushman & Wakefield ULC, Brokerage

No warranty or representation, expressed or implied, is made as to the accuracy of the information contained herein, and same is submitted subject to errors, omissions, change of price, rental or other conditions, withdrawal without notice, and to any specific listing condition, imposed by our principals. *Sales Representative

OFFICE FOR LEASE 229 YONGE STREET



PROPERTY PHOTOS



FOR MORE INFORMATION, PLEASE CONTACT:

CLARKE STRUTHERS*

Vice President
416 359 2451
clarke.struthers@cushwake.com

RILEY LITTLEJOHN*

Senior Associate
416 359 2444
riley.littlejohn@cushwake.com

CUSHMAN & WAKEFIELD ULC, BROKERAGE

161 Bay Street, Suite 1500
Toronto, M5J 2S1
cushmanwakefield.com

Cushman & Wakefield ULC, Brokerage
No warranty or representation, expressed or implied, is made as to the accuracy of the information contained herein, and same is submitted subject to errors, omissions, change of price, rental or other conditions, withdrawal without notice, and to any specific listing condition, imposed by our principals. *Sales Representative

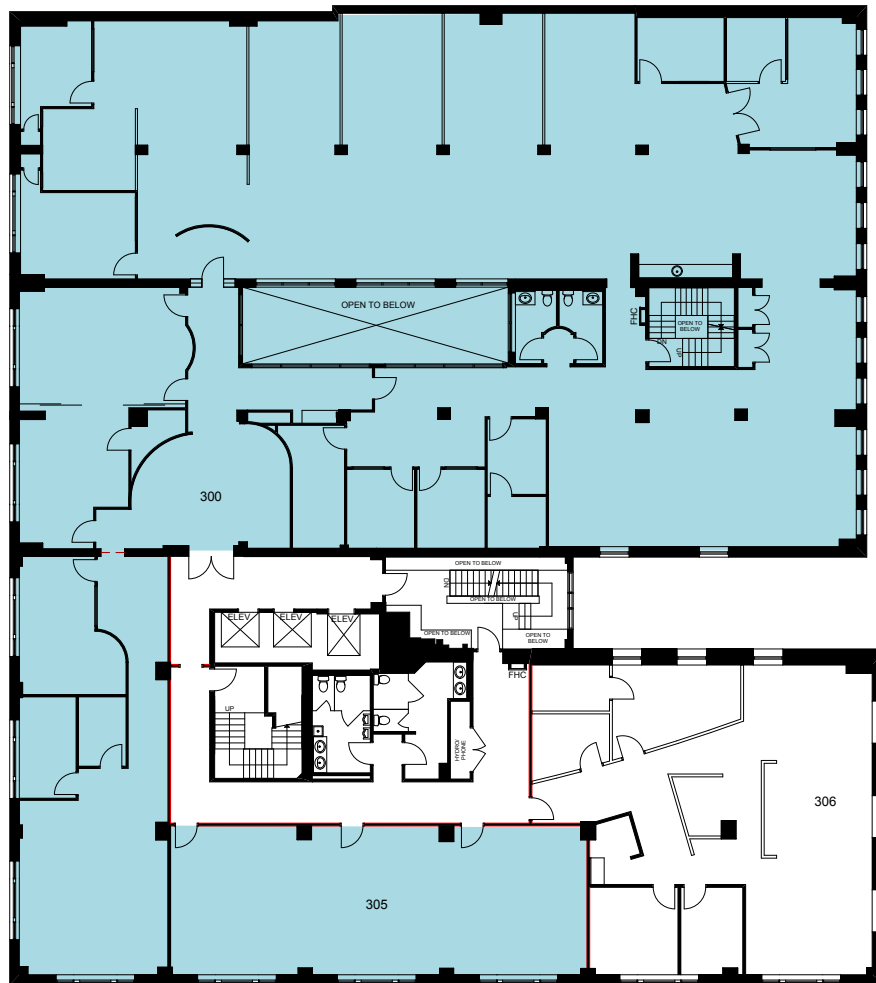
OFFICE FOR LEASE 229 YONGE STREET



FLOOR PLAN

SUITE 300 - 9,257 SF

SUITE 305 - 2,865 SF



FOR MORE INFORMATION, PLEASE CONTACT:

CLARKE STRUTHERS*

Vice President
416 359 2451
clarke.struthers@cushwake.com

RILEY LITTLEJOHN*

Senior Associate
416 359 2444
riley.littlejohn@cushwake.com

CUSHMAN & WAKEFIELD ULC, BROKERAGE

161 Bay Street, Suite 1500
Toronto, M5J 2S1
cushmanwakefield.com

Cushman & Wakefield ULC, Brokerage
No warranty or representation, expressed or implied, is made as to the accuracy of the information contained herein, and same is submitted subject to errors, omissions, change of price, rental or other conditions, withdrawal without notice, and to any specific listing condition, imposed by our principals. *Sales Representative

OFFICE FOR LEASE 229 YONGE STREET



FLOOR PLAN

SUITE 400 - 9,156 SF



FOR MORE INFORMATION, PLEASE CONTACT:

CLARKE STRUTHERS*

Vice President
416 359 2451
clarke.struthers@cushwake.com

RILEY LITTLEJOHN*

Senior Associate
416 359 2444
riley.littlejohn@cushwake.com

CUSHMAN & WAKEFIELD ULC, BROKERAGE

161 Bay Street, Suite 1500
Toronto, M5J 2S1
cushmanwakefield.com

Cushman & Wakefield ULC, Brokerage
No warranty or representation, expressed or implied, is made as to the accuracy of the information contained herein, and same is submitted subject to errors, omissions, change of price, rental or other conditions, withdrawal without notice, and to any specific listing condition, imposed by our principals. *Sales Representative

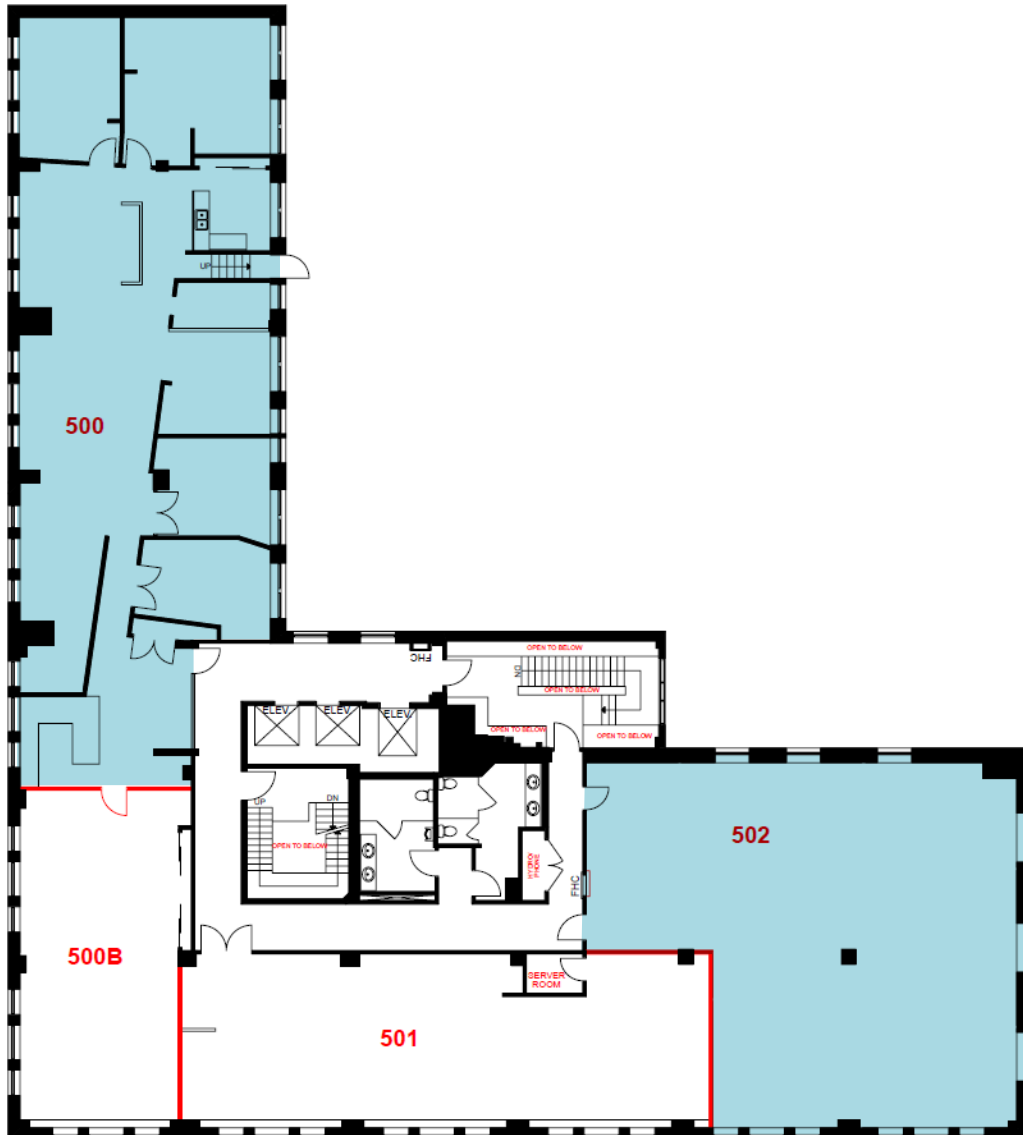
OFFICE FOR LEASE 229 YONGE STREET



FLOOR PLAN

SUITE 500 - 3,256 SF

SUITE 502 - 2,412 SF



FOR MORE INFORMATION, PLEASE CONTACT:

CLARKE STRUTHERS*

Vice President
416 359 2451
clarke.struthers@cushwake.com

RILEY LITTLEJOHN*

Senior Associate
416 359 2444
riley.littlejohn@cushwake.com

CUSHMAN & WAKEFIELD ULC, BROKERAGE

161 Bay Street, Suite 1500
Toronto, M5J 2S1
cushmanwakefield.com

Cushman & Wakefield ULC, Brokerage
No warranty or representation, expressed or implied, is made as to the accuracy of the information contained herein, and same is submitted subject to errors, omissions, change of price, rental or other conditions, withdrawal without notice, and to any specific listing condition, imposed by our principals. *Sales Representative