



160 FEDERAL

CLASS A OFFICE SPACE AVAILABLE: 59,364 SF



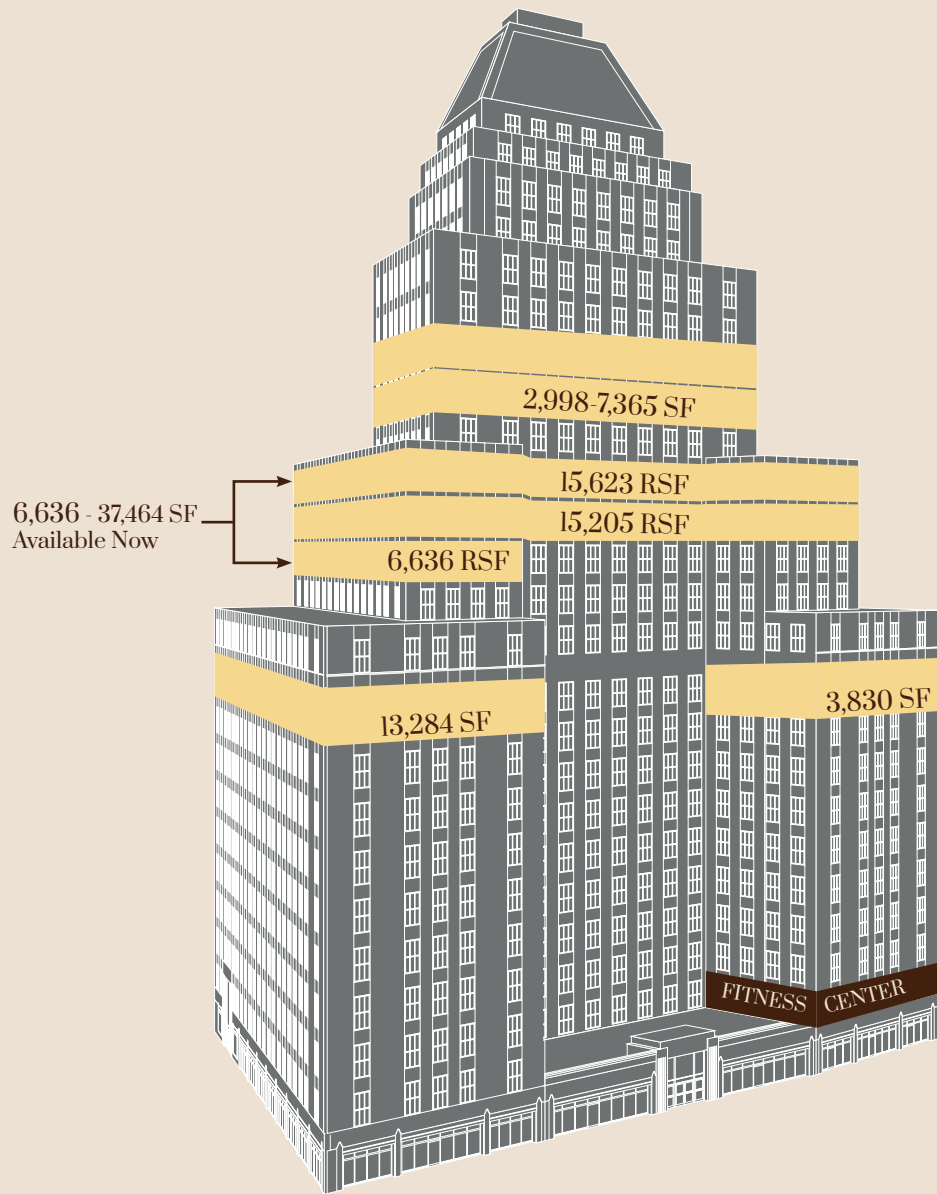
OWNED & MANAGED BY:

Rockhill[®]
MANAGEMENT

160 FEDERAL STREET, BOSTON
160FEDERAL.COM



THE NEW CLASSIC



160 Federal Street is a 24-story, 388,000 SF art-deco building located at the gateway of the Financial District. Built in 1929, the iconic building is listed on Boston's National Register and was formerly known as the United Shoe Machinery Building.

BUILDING FEATURES:

- » Fitness Center
- » Onsite Parking
- » Lobby-Level Retail
- » Energy Star Rated
- » Best-in-Class Food Hall
- » Secure Bike Room





WITHIN ¼ MILE:

51 

RESTAURANTS

3 

BARS

14 

FITNESS CENTERS

26 

COFFEE SHOPS

4 

HOTELS

62 

RETAIL SHOPS

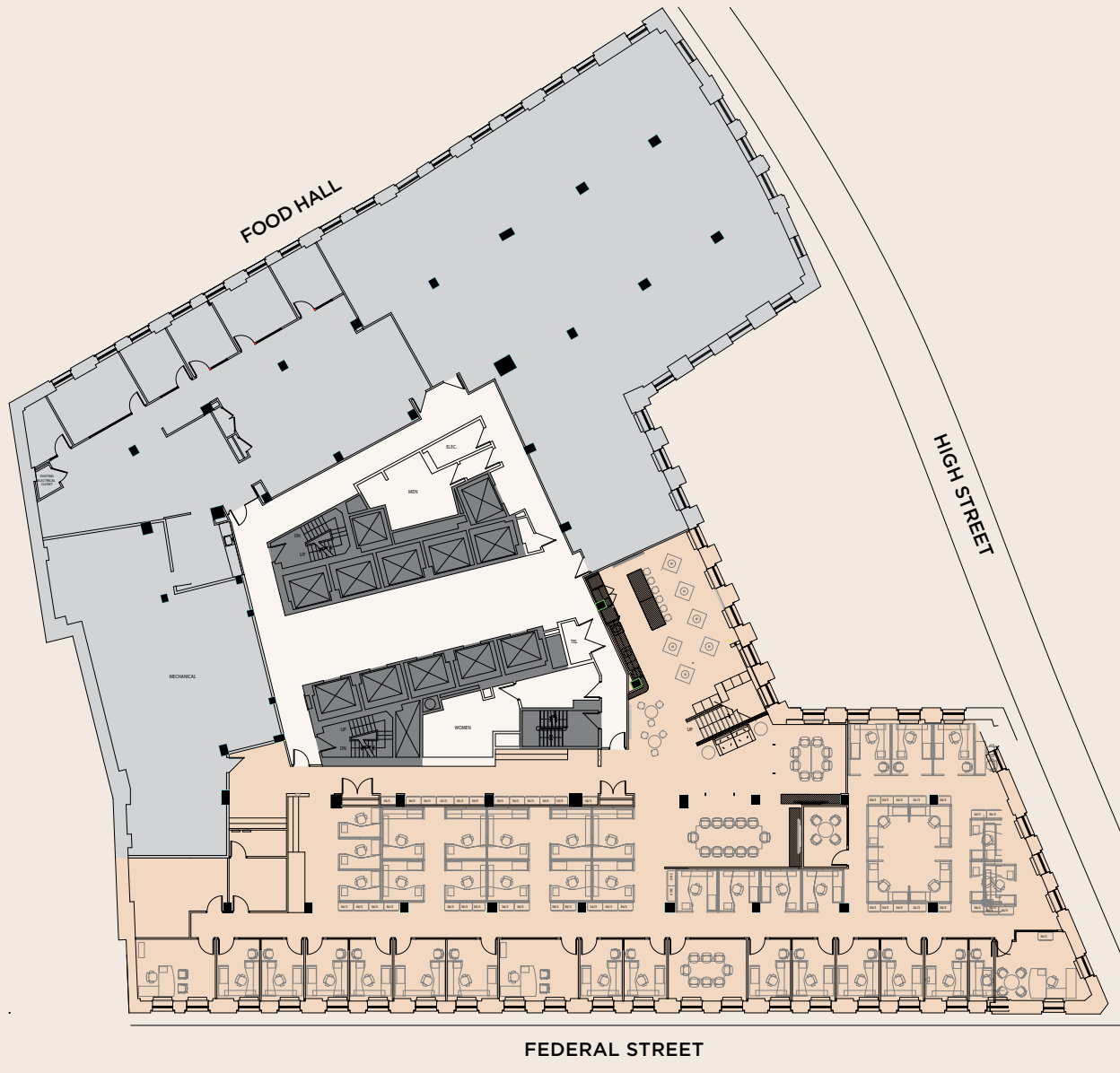
AVAILABILITIES

PARTIAL FLOOR 10
3,830 RSF AVAILABLE
AVAILABLE
NOW



AVAILABILITIES

PARTIAL FLOOR 10
13,284 RSF AVAILABLE
AVAILABLE
NOW



AVAILABILITIES

PARTIAL FLOOR 13
6,636 RSF AVAILABLE
AVAILABLE
NOW



6,636 RSF

AVAILABILITIES

ENTIRE FLOOR 14
15,205 RSF AVAILABLE
AVAILABLE
NOW



15,205 RSF

AVAILABILITIES

ENTIRE FLOOR 15
15,623 RSF AVAILABLE
AVAILABLE
NOW



15,623 RSF

AVAILABILITIES

ENTIRE FLOOR 17
2,998 – 7,365 RSF AVAILABLE
AVAILABLE
NOW



2,998 RSF

4,367 RSF



High Street
Place

9810
9811

THE BMW
MEMORIAL DAY
SALES EVENT

LEASE A 2021 BMW 330i xDRIVE SEDAN

\$439 PER MONTH FOR 36 MONTHS
WITH \$3,000 DOWN PAYMENT
HOW THROUGHLY WE TEST

Go to bmwusa.com/25SeriesDriveLeaseOffers

BMWCenters.com

©2021 BMW of North America, LLC. The BMW name, model names and logo are registered trademarks.

B
E
E
R

THIS MUST
BE THE
Place

LEAVE NO TRACE
HAPPY 150

LEAVE NO TRACE
HAPPY 150

LEAVE NO TRACE
HAPPY 150

LEAVE NO TRACE
HAPPY 150

LEAVE NO TRACE
HAPPY 150

LEAVE NO TRACE
HAPPY 150

LEAVE NO TRACE
HAPPY 150

LEAVE NO TRACE
HAPPY 150

LEAVE NO TRACE
HAPPY 150

LEAVE NO TRACE
HAPPY 150

LEAVE NO TRACE
HAPPY 150

LEAVE NO TRACE
HAPPY 150

LEAVE NO TRACE
HAPPY 150

BOSTON'S NEWEST FOOD HALL

Now open! High Street Place is a 20,000 SF food hall that unites 160 Federal Street and 100 High Street. This five-story atrium complex with 400-seat capacity features 20 vendors with a diverse blend of Boston's culinary scene.

Eateries include Fuji, Blackbird Doughnuts, Mike & Patty's, Mother Juice, and three concepts by award-winning chef Tiffani Faison in a world-class architectural environment. There's even a champagne vending machine!



160
FEDERAL



Thomas Ashe | 617 204 4112 | thomas.ashe@cushwake.com
Mary Patalita | 617 630 7400 | mary.patalita@cushwake.com
Nicolette Pope | 617 219 7751 | nicolette.pope@cushwake.com

