



# SOUTHCREEK

CORPORATE CENTER



## CLASS A BUILDING AVAILABLE FOR LEASE

12980 FOSTER ST. OVERLAND PARK | KANSAS







**EXTERIOR BUILDING  
SIGNAGE AVAILABLE**



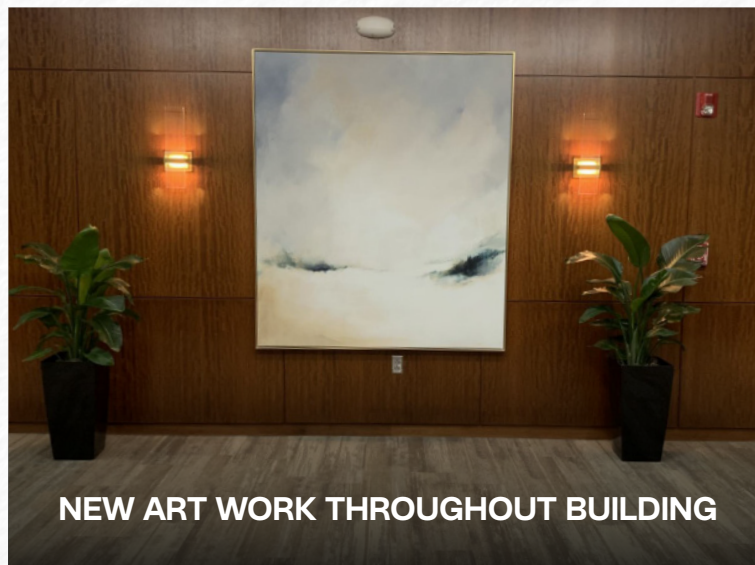
**OUTDOOR PATIO WITH  
WIFI CONNECTIVITY**



**PHASED RESTROOM UPGRADES**



**BUILDING CONFERENCE ROOM  
WITH AV CAPABILITIES**



**NEW ART WORK THROUGHOUT BUILDING**

## PROPERTY HIGHLIGHTS

**SOUTHCREEK CORPORATE CENTER** is a 119,143 SF Class A office building located in the prestigious 1.7 MSF Southcreek Office Park in Overland Park, KS

**SUITE SIZES** available ranging from 1,100–20,000 SF with opportunities right off main building lobby

**THE BUILDING FEATURES HIGH-END FINISHES THROUGHOUT THE LOBBY & COMMON AREAS**, including phased restroom upgrades with further capital improvements plan

**RECENT BUILDING UPGRADES** include refreshed common areas and new soft seating in the lobby, as well as a new outdoor patio with Wi-Fi connectivity

**EXTERIOR SIGNAGE** available for large tenant

**CLOSE PROXIMITY** to executive housing, top public schools in the area, and 2.5 MSF of premier retail and entertainment options along the 135th Street corridor

**EXCELLENT HIGHWAY ACCESS** located south of I-435 and within minutes of 69 Highway

**THE 26 MILE INDIAN CREEK TRAIL** runs immediately adjacent to the building

**LARGE, EFFICIENT FLOOR PLATES** measuring nearly 30,000 SF 4.4/1,000 SF parking ratio

**THE INTERIOR SPACES** benefit from 14' slab-to-slab height, 65' bay depths, and extensive ribbon glass lines, making them highly functional for a wide array of office users





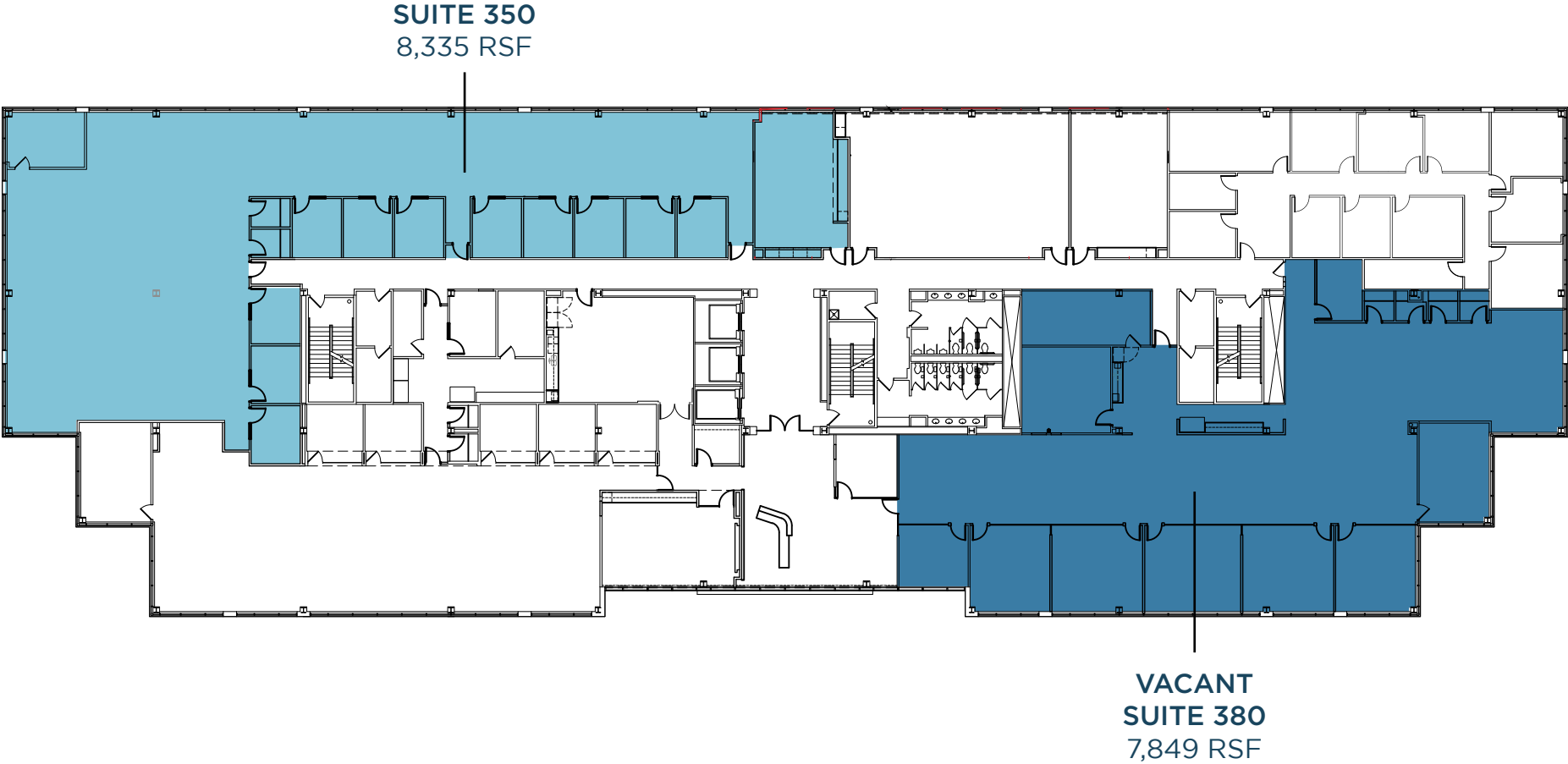
OFFICE SPACE

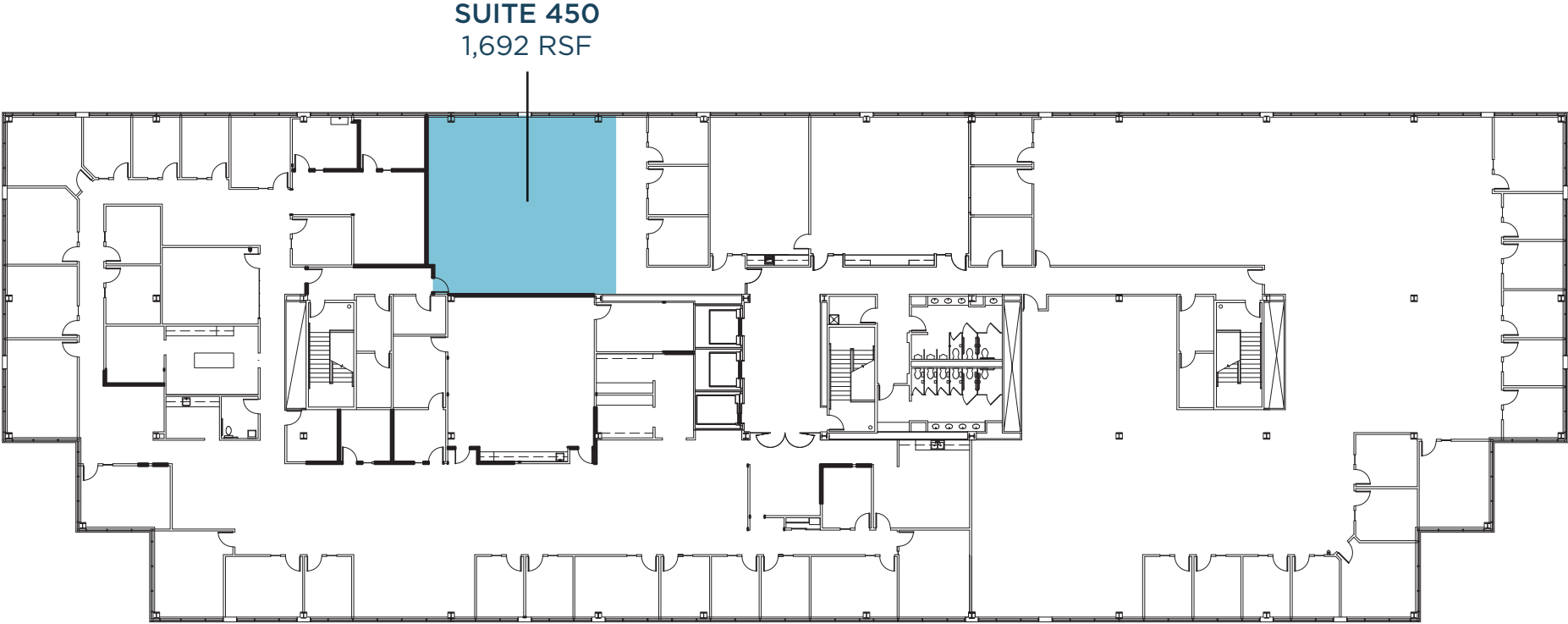




AVAILABLE NOVEMBER 1, 2025  
Suite 220  
3,541 RSF







# EVERYTHING AT YOUR FINGERTIPS

## EAT

- 1 Culver's
- 2 Whataburger
- 3 Wendy's
- 4 First Watch
- 5 Shack Breakfast & Lunch
- 6 Red Robin
- 7 Taco Bell
- 8 Penn Station
- 9 Strouds
- 10 Dairy Queen
- 11 Chick-fil-A
- 12 Panda Express
- 13 Jimmy John's
- 14 Starbucks
- 15 Noodles and Company
- 16 Smoothie King
- 17 Another Broken Egg Café
- 18 Chipotle

- 19 Snooze, A.M. Eatery
- 20 Nick & Jake's
- 21 Panera Bread
- 22 Crumbl Cookies
- 23 Goodcents
- 24 Kyoto Sushi
- 25 Corner Bakery Café
- 26 Maggiano's Little Italy
- 27 Redrock Canyon Grill
- 28 KPOT

- 29 QDOBA
- 30 Prime Sushi
- 31 Dave & Buster's
- 32 Buffalo Wild Wings
- 33 Protein House
- 34 Firebirds Wood Fired Grill
- 35 The Brew Top Pub and Patio
- 36 SPIN! Pizza
- 37 CAVA

- 38 BIBIBOP Asian Grill
- 39 Potbelly
- 40 Chicken N Pickle
- 41 Andy's Frozen Custard
- 42 Rock & Brews
- 43 Wine Bunker
- 44 Grimaldi's Pizzeria
- 45 The Brass Onion
- 46 Pinstripes
- 47 CocoBolos Mexican Grill

- 48 Veritas Whiskey and Wine Grill

## LIVE

- 1 Aldi
- 2 Sam's Club
- 3 The Home Depot
- 4 Basecamp Fitness
- 5 B&B Theatres
- 6 Ethan Allen

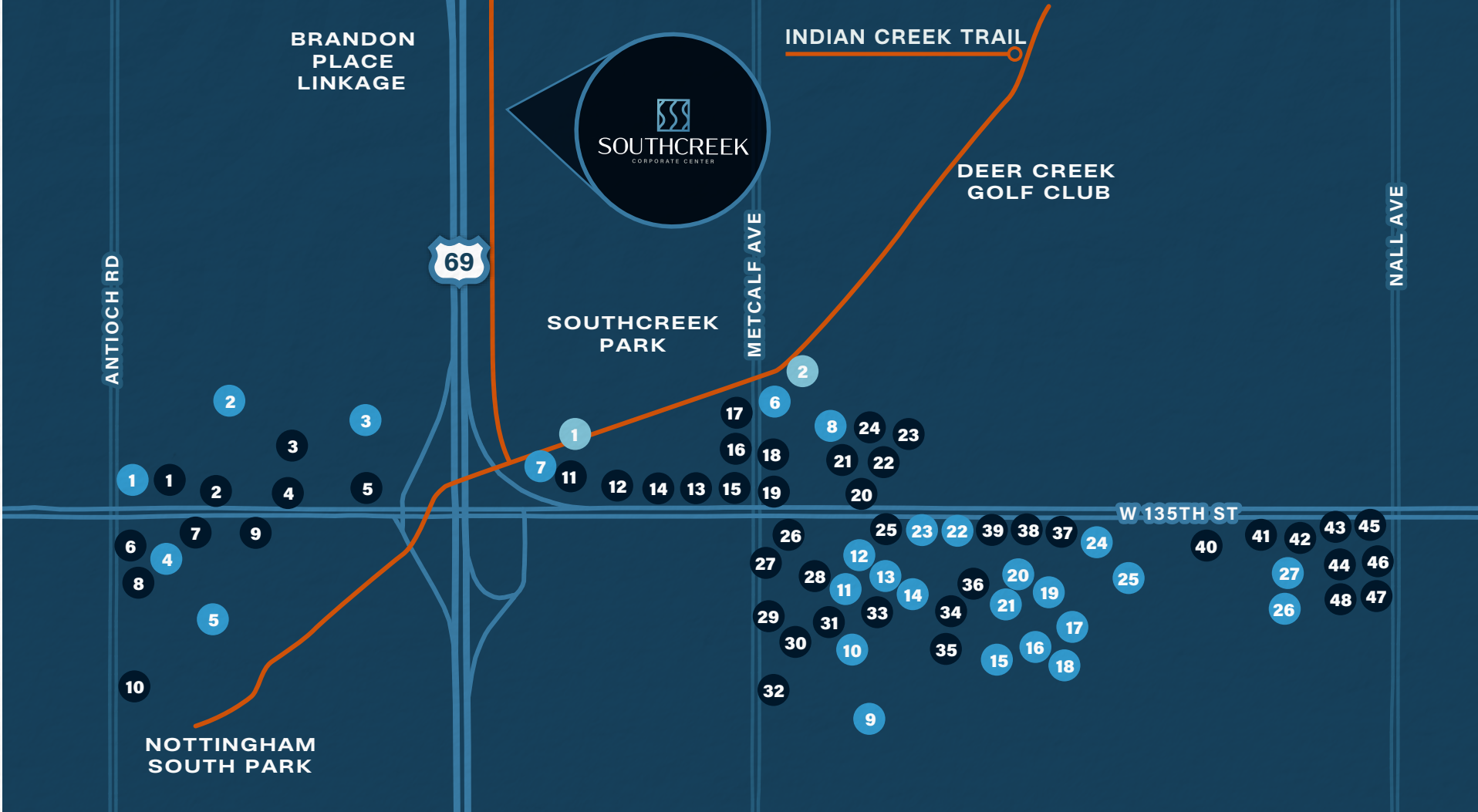
- 7 La-Z-Boy
- 8 Hen House Market
- 9 Life Time Fitness
- 10 JCPenney
- 11 Sprouts Farmers Market
- 12 Crowley Furniture
- 13 Bassett Furniture
- 14 Von Maur
- 15 SCHEELS
- 16 Kirkland's

- 17 BRKTHROUGH
- 18 ULTA
- 19 Beef Jerky Outlet
- 20 Petco
- 21 Luxuria Exquisite Home Furnishings
- 22 Men's Wearhouse
- 23 Jared
- 24 REI
- 25 HomeGoods

- 26 Museum at Prairiefire
- 27 AMC Dine-In Theater

## STAY

- 1 Holiday Inn Express & Suites
- 2 TownePlace Suites







# SOUTHCREEK

CORPORATE CENTER

FOR MORE INFORMATION, PLEASE CONTACT

---

**MARTY GILCHRIST, CCIM**

SENIOR ASSOCIATE

+1 816 216 5655 | [marty.gilchrist@cushwake.com](mailto:marty.gilchrist@cushwake.com)