



FOR LEASE

ARLINGTON SQUARE

3300 WASHTENAW AVENUE
ANN ARBOR, MI 48104



CUSHMAN &
WAKEFIELD



2nd floor space ideal for retail,
medical office, and general
office use



Across the street from abundant
retail including Arborland Center,
Whole Foods, Barnes & Noble,
Qdoba & many more



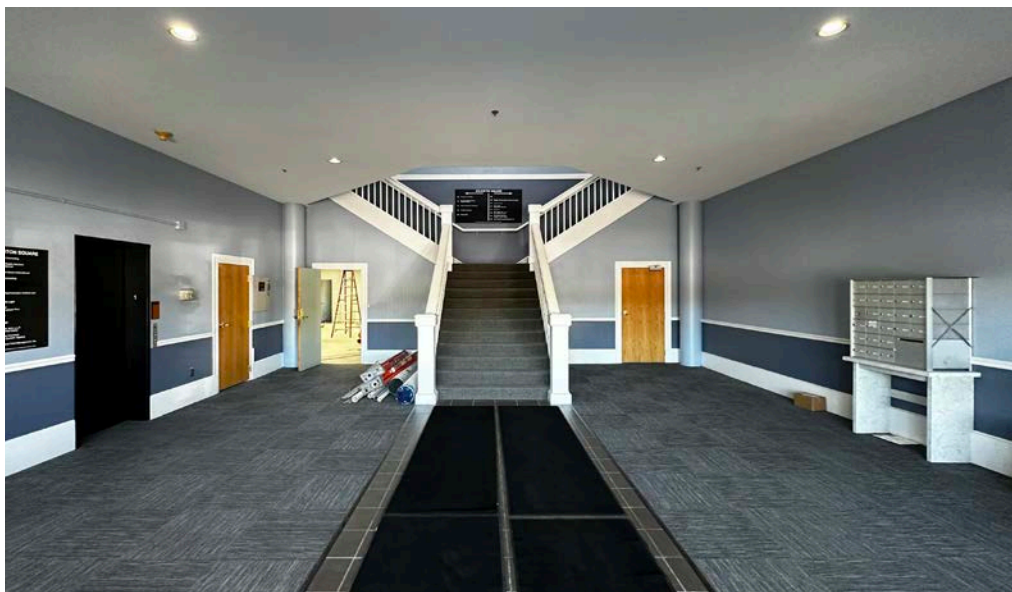
65 parking spaces;
underground parking available



High visibility/traffic at the
corner of Washtenaw Avenue
and Huron Parkway with pylon
signage available



Immediate proximity to US-23



CONTACT

Kyle Passage

Senior Associate
+1 248 358 6113
kyle.passage@cushwake.com

Tony Advent

Executive Director
+1 248 358 6115
tony.advent@cushwake.com

27777 Franklin Road, Suite 1050
Southfield, Michigan 48034
Main +1 248 358 6100
cushmanwakefield.com

FOR LEASE

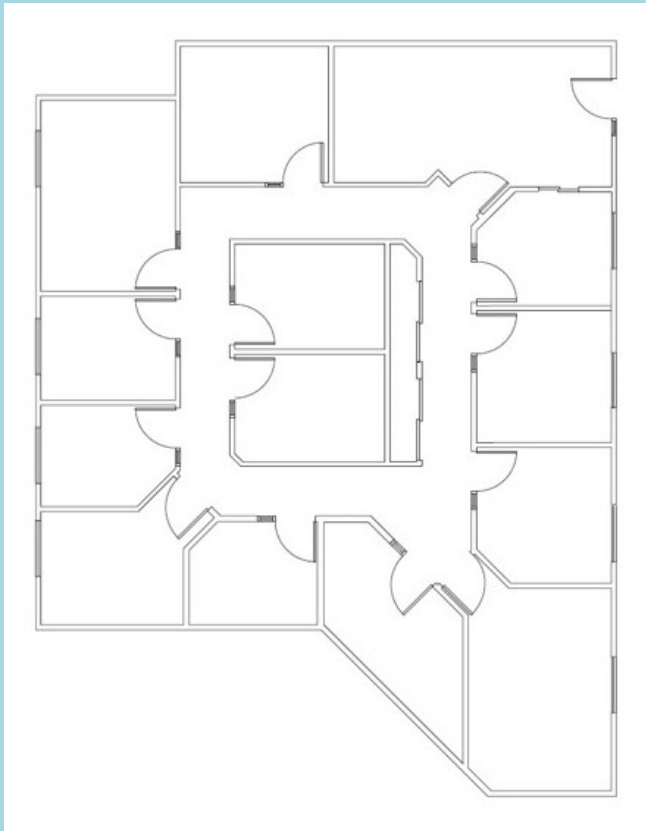
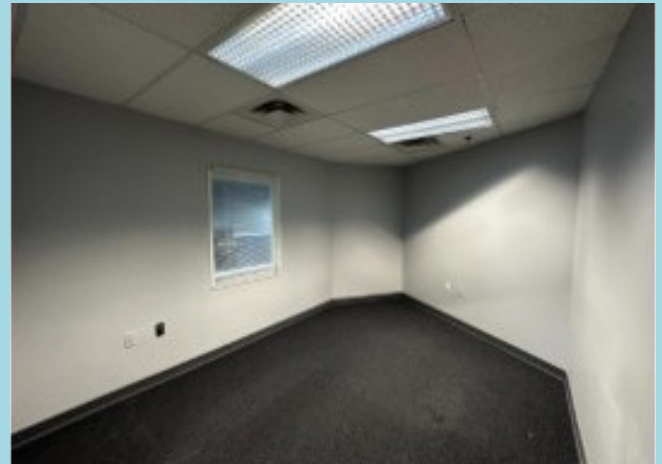
ARLINGTON SQUARE

3300 WASHTENAW AVENUE
ANN ARBOR, MI 48104

SUITE 265

2,228 RSF

\$17.50/SF + Utilities



CONTACT

Kyle Passage

Senior Associate
+1 248 358 6113
kyle.passage@cushwake.com

Tony Advent

Executive Director
+1 248 358 6115
tony.advent@cushwake.com

27777 Franklin Road, Suite 1050
Southfield, Michigan 48034
Main +1 248 358 6100
cushmanwakefield.com

FOR LEASE

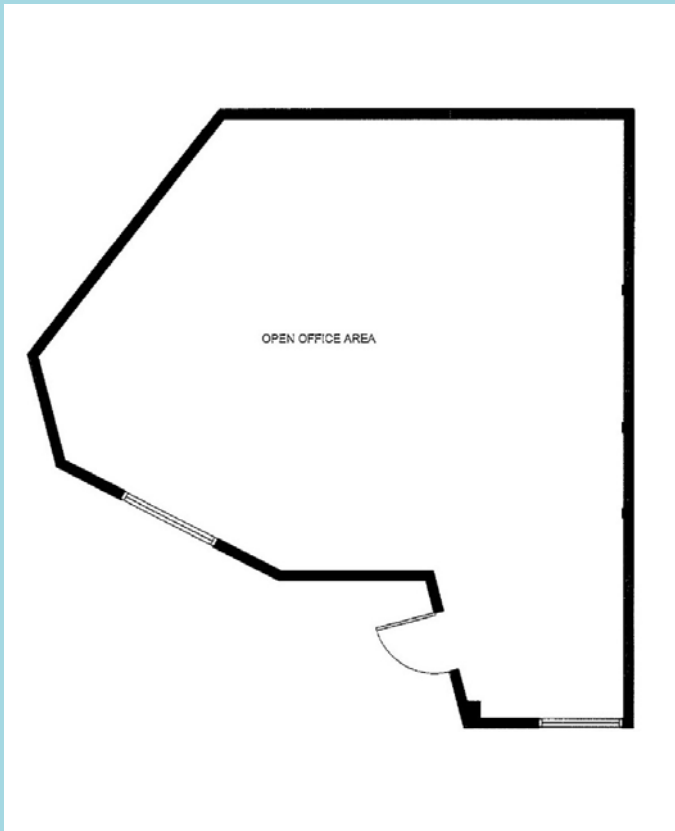
ARLINGTON SQUARE

3300 WASHTENAW AVENUE
ANN ARBOR, MI 48104

SUITE 295

790 RSF

\$17.50/SF + Utilities



CONTACT

Kyle Passage

Senior Associate
+1 248 358 6113
kyle.passage@cushwake.com

Tony Advent

Executive Director
+1 248 358 6115
tony.advent@cushwake.com

27777 Franklin Road, Suite 1050
Southfield, Michigan 48034
Main +1 248 358 6100
cushmanwakefield.com

AERIAL



CONTACT

Kyle Passage

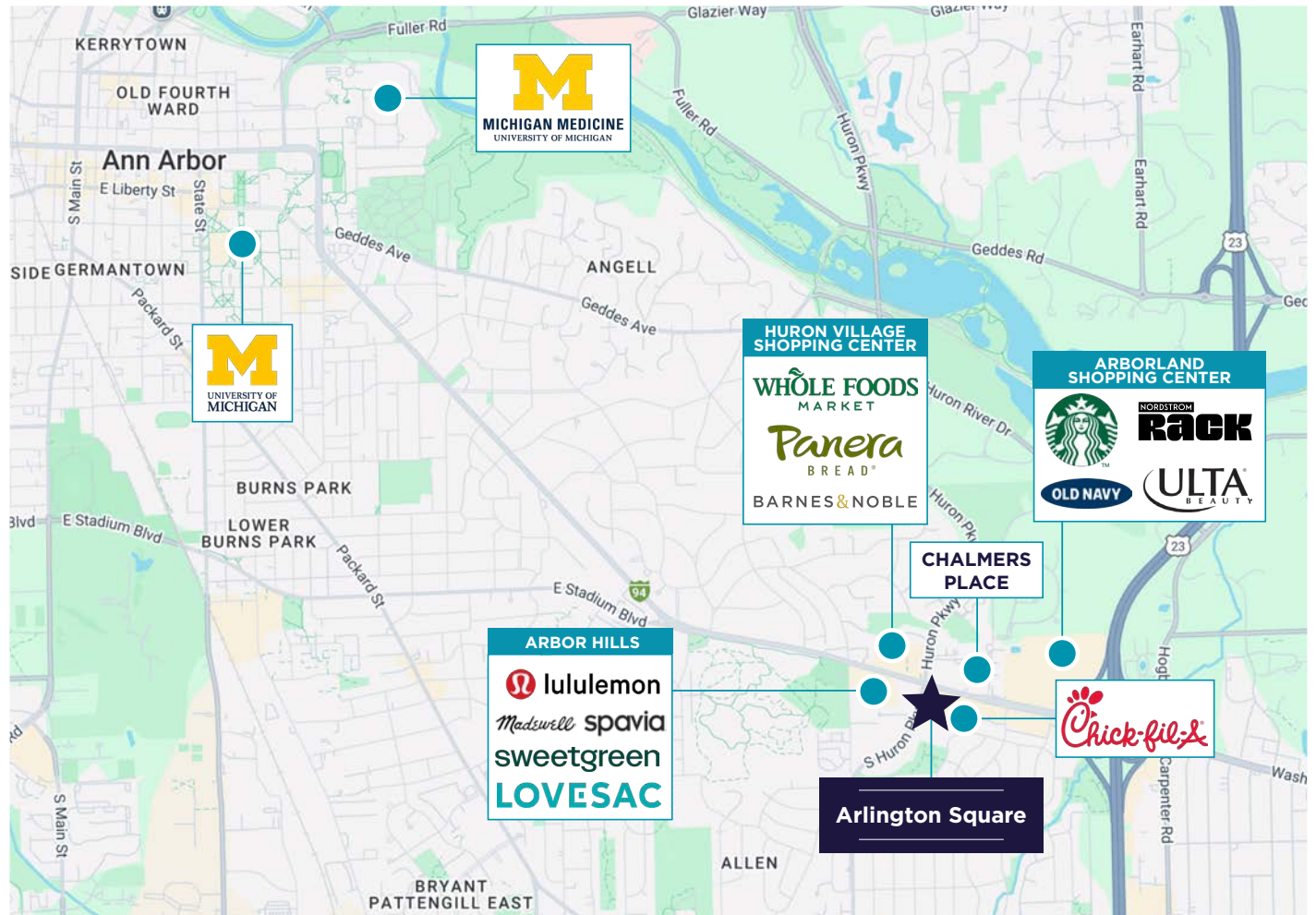
Senior Associate
+1 248 358 6113
kyle.passage@cushwake.com

Tony Advent

Executive Director
+1 248 358 6115
tony.advent@cushwake.com

27777 Franklin Road, Suite 1050
Southfield, Michigan 48034
Main +1 248 358 6100
cushmanwakefield.com

AMENITIES MAP



Arbor Hills Shopping Mall



University of Michigan Campus



University of Michigan Hospital

CONTACT

Kyle Passage

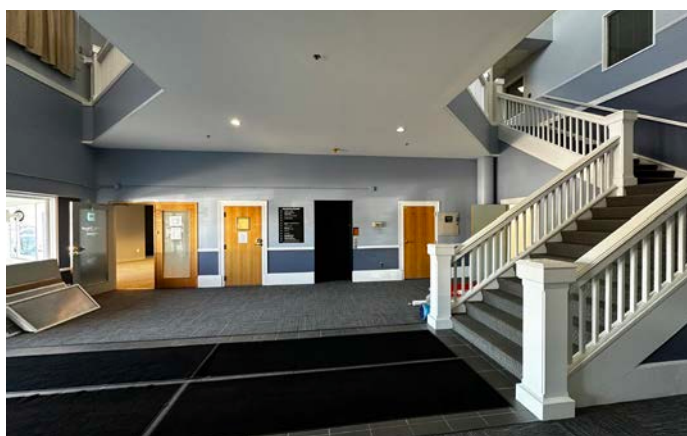
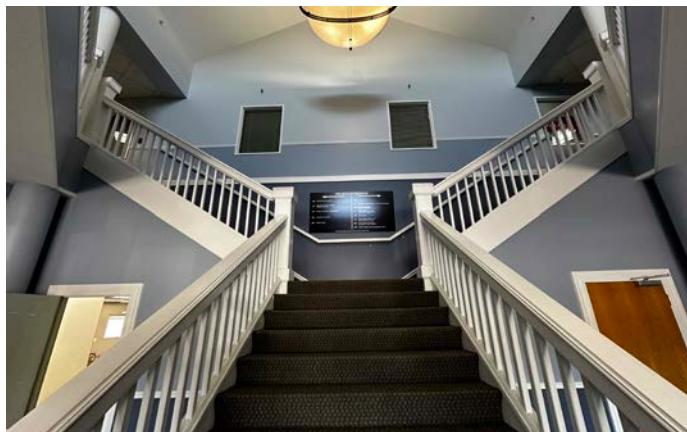
Senior Associate
+1 248 358 6113
kyle.passage@cushwake.com

Tony Advent

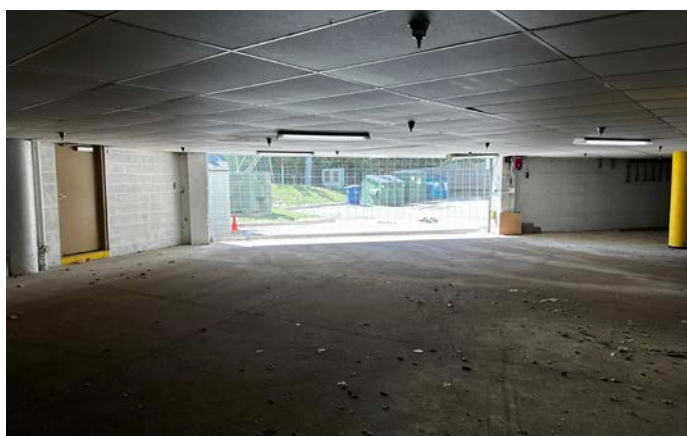
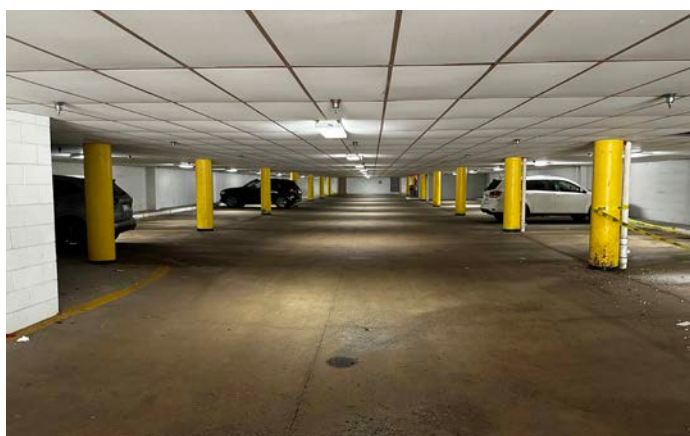
Executive Director
+1 248 358 6115
tony.advent@cushwake.com

27777 Franklin Road, Suite 1050
Southfield, Michigan 48034
Main +1 248 358 6100
cushmanwakefield.com

LOBBY INTERIOR



PARKING GARAGE



CONTACT

Kyle Passage

Senior Associate
+1 248 358 6113
kyle.passage@cushwake.com

Tony Advent

Executive Director
+1 248 358 6115
tony.advent@cushwake.com

27777 Franklin Road, Suite 1050
Southfield, Michigan 48034
Main +1 248 358 6100
cushmanwakefield.com

ARLINGTON SQUARE

3300 WASHTENAW AVENUE

ANN ARBOR, MI 48104

