



CUSHMAN &  
WAKEFIELD

# REDWOOD TOWER

Exceptional Harbor Views  
Fully Furnished  
Plug and Play Space

217 East Redwood Street  
Baltimore, MD 21202





## PROPERTY HIGHLIGHTS

- Stunning Views of the Baltimore Harbor
- Newly Renovated Lobbies (Ground Floor & Sky Lobby)
- Nine Corner Offices Per Floor
- Brand New Elevator Cabs
- Recently Upgraded HVAC System
- High Profile Tenant Base

## BUILDING AMENITIES

- Newly Renovated Conference Center
- Lobby Sundry Shop
- On-Site Property Management
- Abundant In-Building Parking
- Short Walking Distance Of Inner Harbor & Numerous Downtown Amenities
- Excellent Access to Public Transportation



# CLASS A VIEW

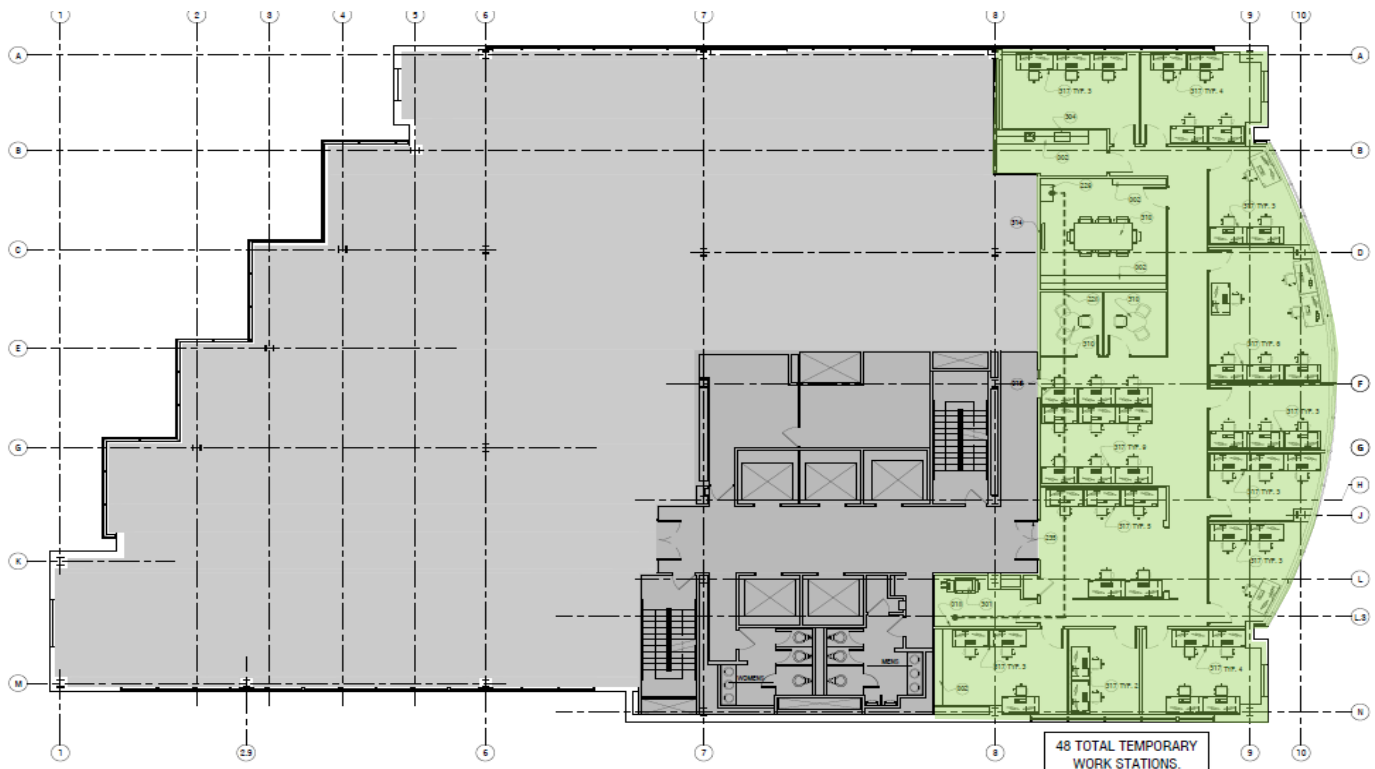






# AVAILABILITY

16th Floor  
4,762 SF



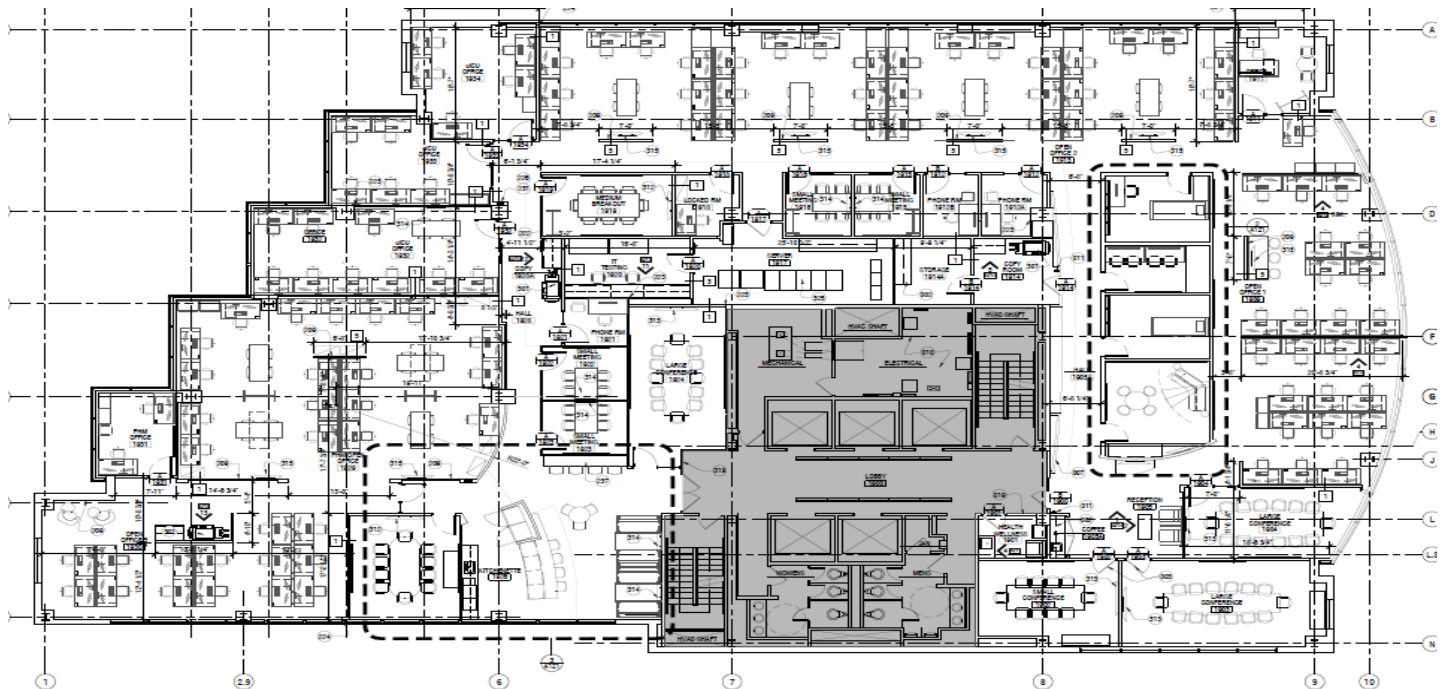




# UPGRADED

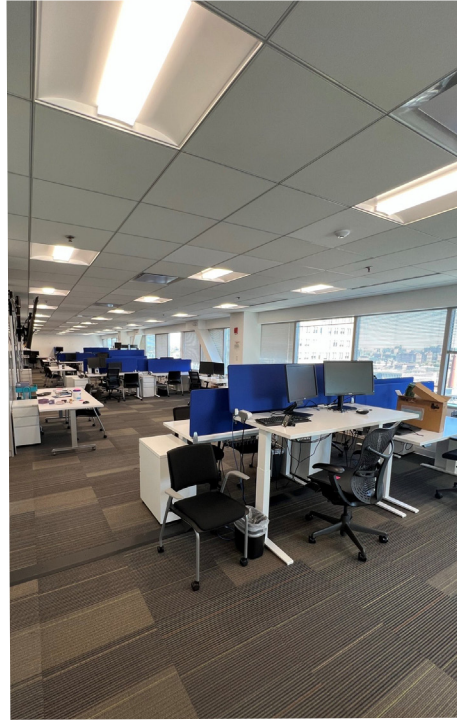
LOBBY / SKY LOBBY / ELEVATORS

19th Floor  
14,430 SF

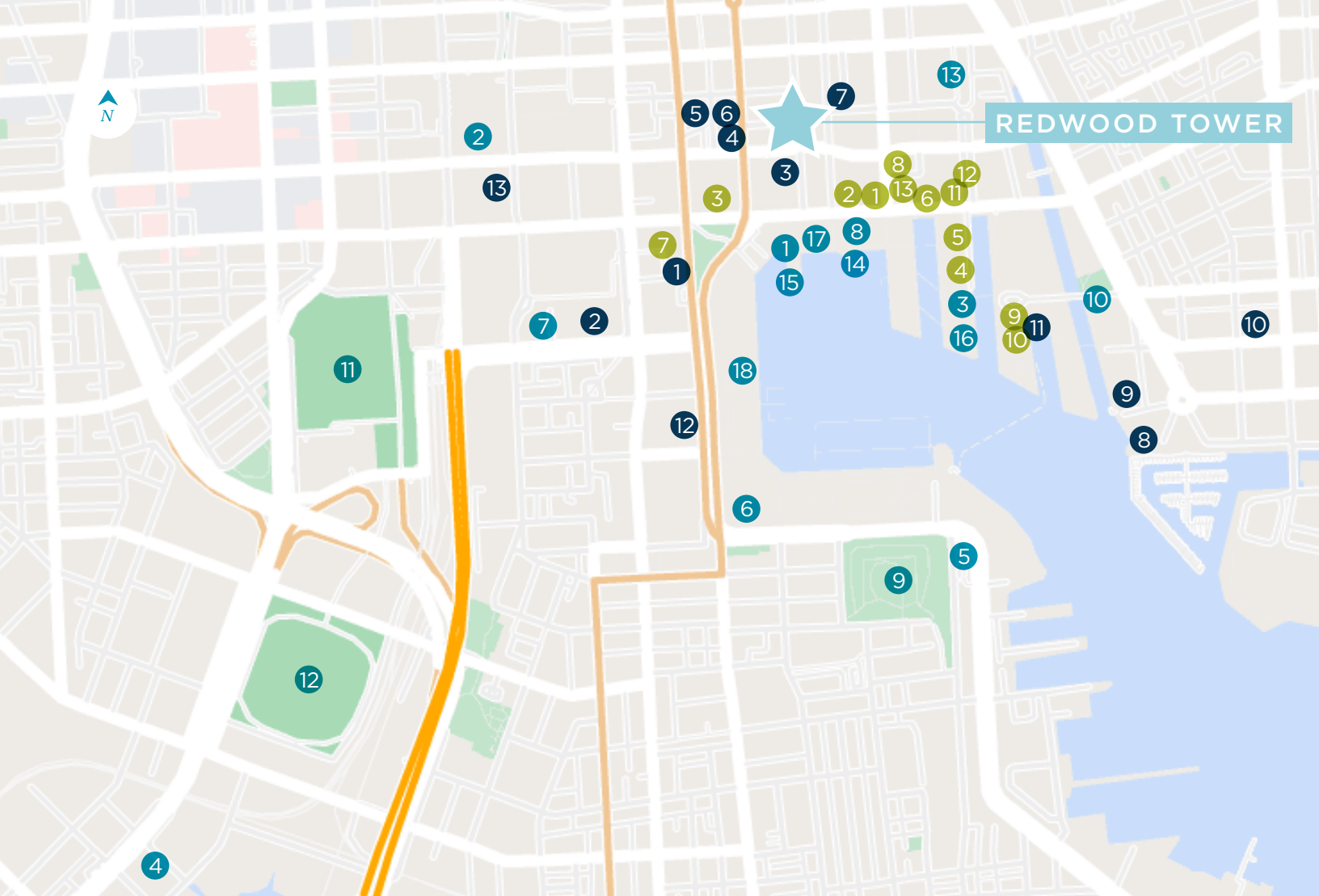




# INTERIOR







# AREA AMENITIES

## RESTAURANTS

- 1 Shake Shack
- 2 Chick-fil-A
- 3 Starbucks
- 4 Hard Rock Café
- 5 Phillips Seafood
- 6 Fogo de Chão
- 7 Kona Grill
- 8 The Capital Grill
- 9 Ruth's Chris Steak House
- 10 McCormick & Schmick's
- 11 IHOP
- 12 Popeyes
- 13 Chipotle

## RETAIL / RECREATION

- 1 Gallery at Harborplace
- 2 CFG Bank Arena
- 3 National Aquarium
- 4 Horseshoe Casino
- 5 American Visionary Art Museum
- 6 Maryland Science Center
- 7 Old Otterbein Church
- 8 9/11 Memorial of Maryland
- 9 Federal Hill Park
- 10 National Historic Seaport
- 11 Oriole Park at Camden Yards
- 12 Ravens' M&T Bank Stadium
- 13 Power Plant Live!
- 14 Top of the World Observation Level
- 15 USS Constellation
- 16 USS Torsk
- 17 Inner Harbor Paddle Boats
- 18 City Brew Tours

## HOTELS

- 1 Hyatt Regency
- 2 Sheraton Inner Harbor
- 3 Renaissance Baltimore
- 4 Comfort Inn & Suites
- 5 Residence Inn by Marriott
- 6 Hampton Inn & Suites
- 7 Staybridge Suites
- 8 Four Seasons Hotel Baltimore
- 9 Baltimore Marriott Waterfront
- 10 Hyatt Place
- 11 Pier 5 Hotel
- 12 Royal Sonesta Baltimore
- 13 Days Inn by Wyndham





## CONTACT

**RICH THOMAS, CCIM**

Managing Director

+1 410 685 9812

[richard.thomas@cushwake.com](mailto:richard.thomas@cushwake.com)

**COURTENAY JENKINS**

Executive Director

+1 410 685 9590

[court.jenkins@cushwake.com](mailto:court.jenkins@cushwake.com)

**CUSHMAN & WAKEFIELD**

One East Pratt Street, Suite 700

Baltimore, MD 21202

