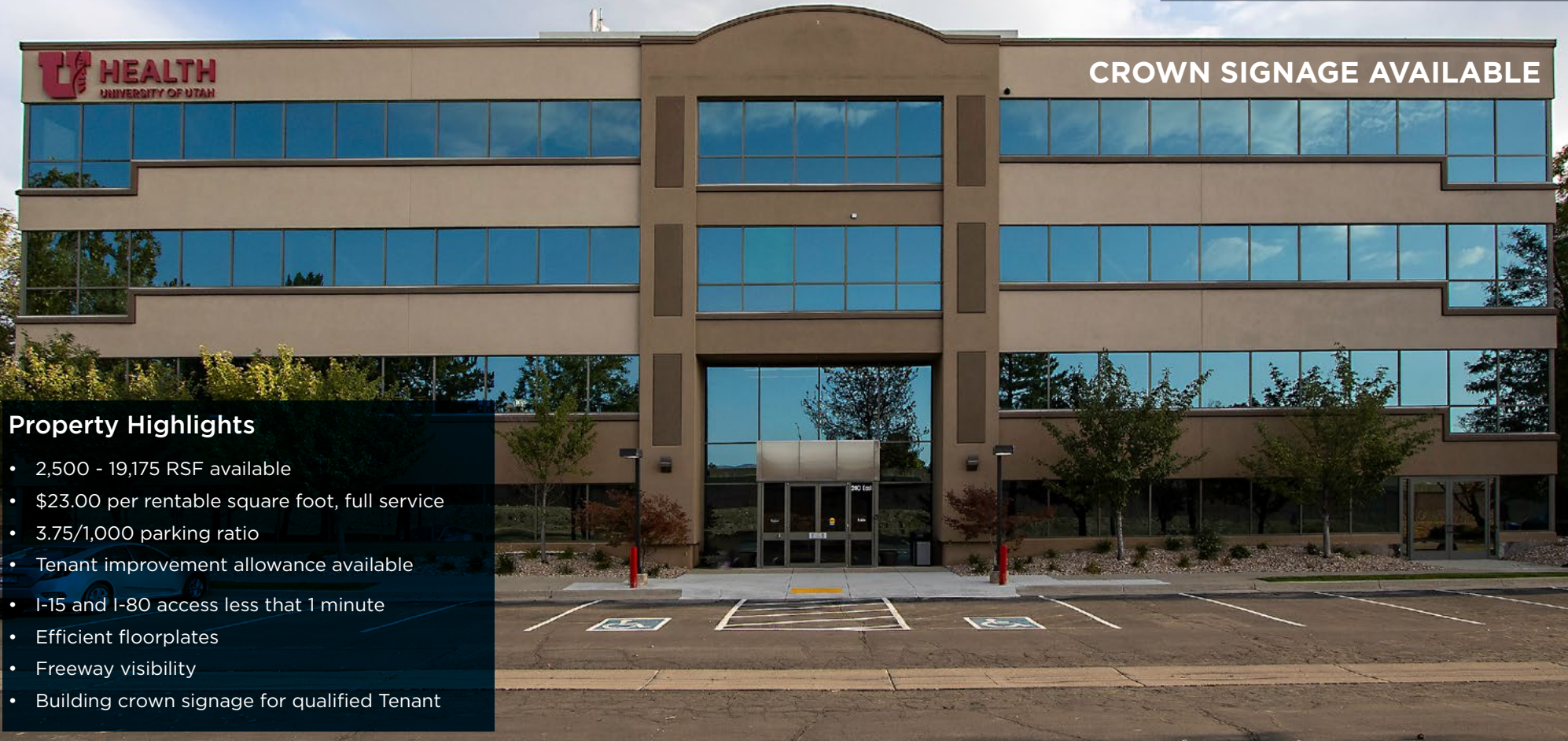


**Freeway Visibility****Property Highlights**

- 2,500 - 19,175 RSF available
- \$23.00 per rentable square foot, full service
- 3.75/1,000 parking ratio
- Tenant improvement allowance available
- I-15 and I-80 access less than 1 minute
- Efficient floorplates
- Freeway visibility
- Building crown signage for qualified Tenant

**Justin Bailey**

Director

+1 801 303 5493

[justin.bailey@cushwake.com](mailto:justin.bailey@cushwake.com)

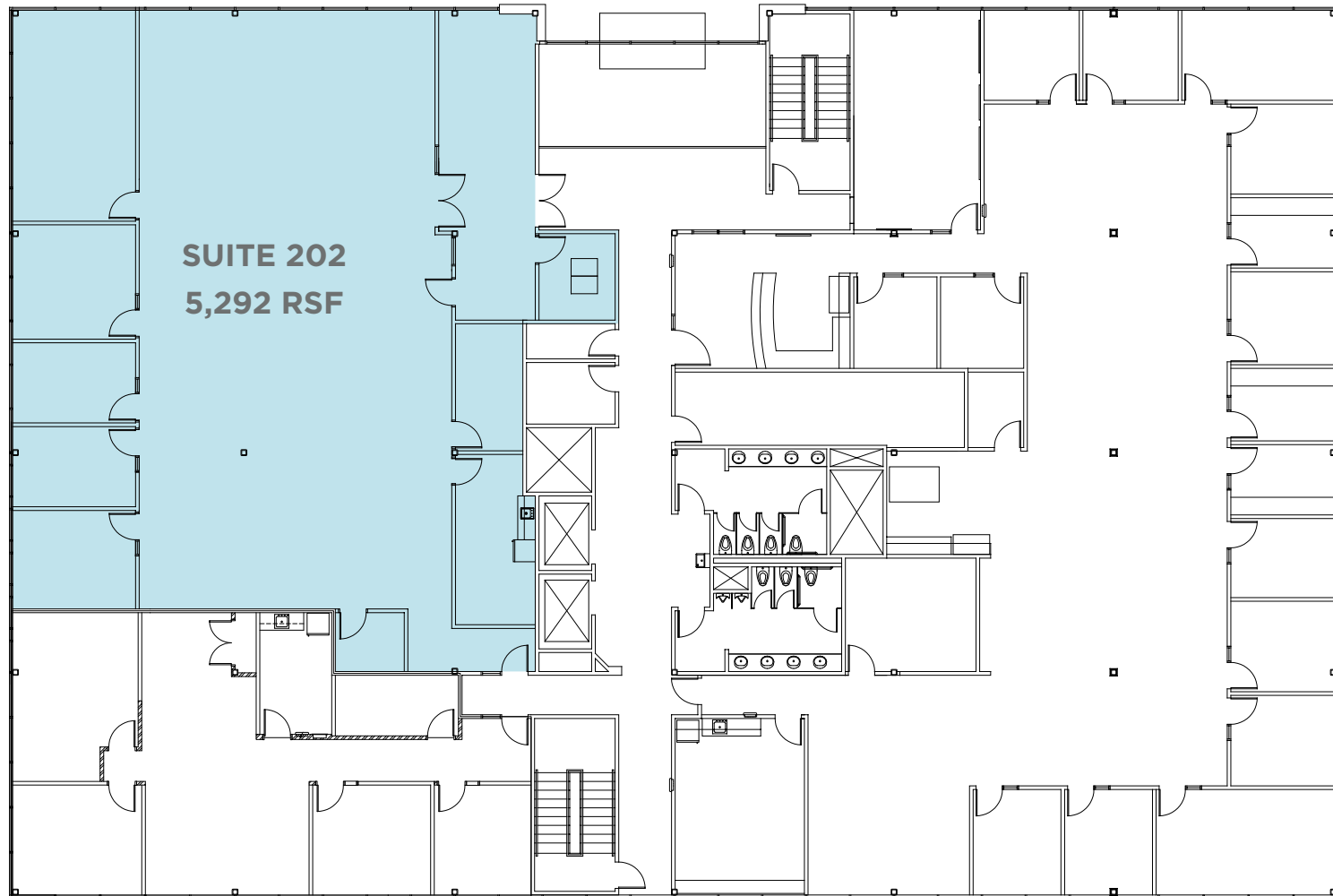
170 South Main, Suite 1600

Salt Lake City, UT 84101

Main +1 801 322 2000

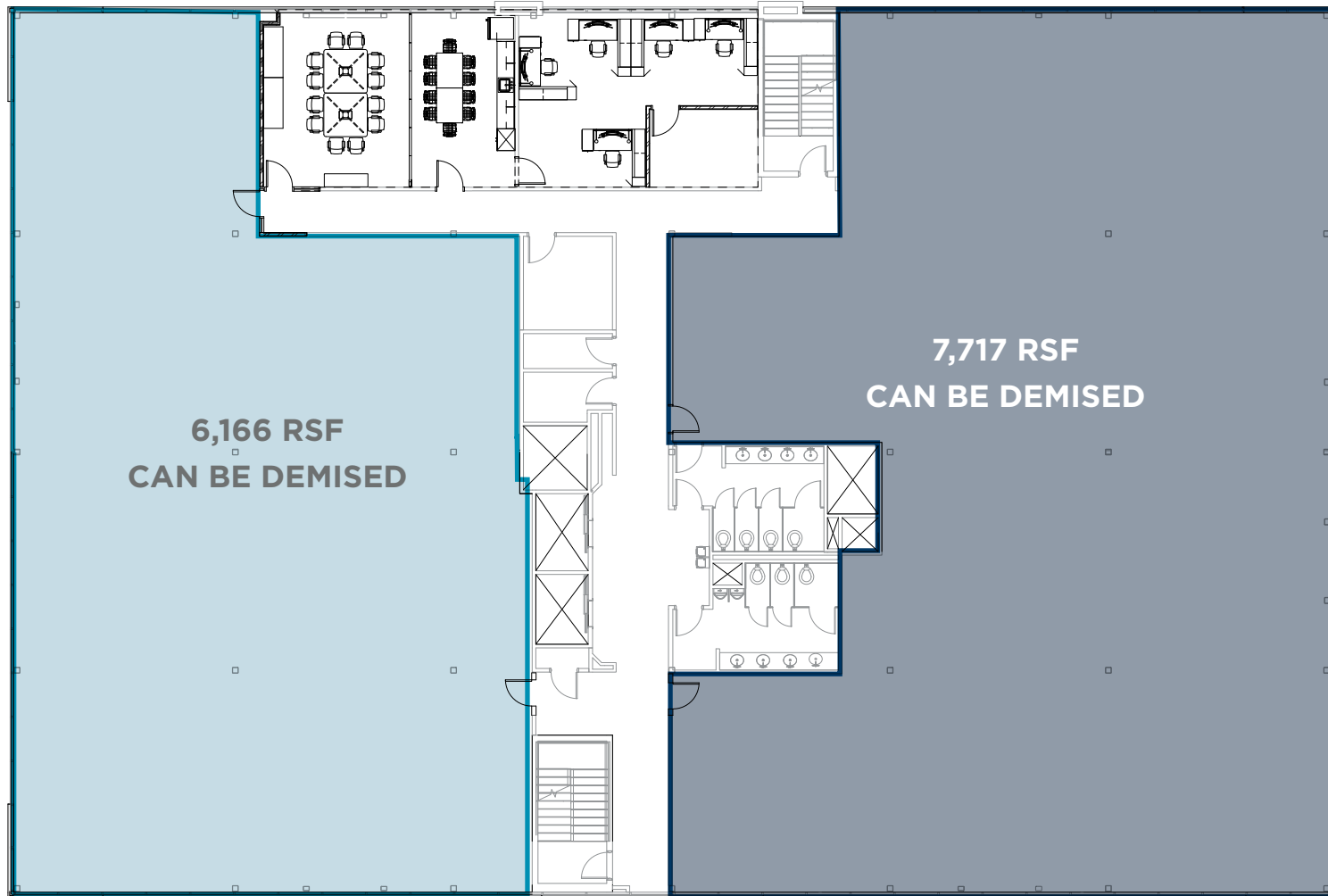
[cushmanwakefield.com](http://cushmanwakefield.com)

## Second Floor



**Justin Bailey**  
Director  
+1 801 303 5493  
[justin.bailey@cushwake.com](mailto:justin.bailey@cushwake.com)

170 South Main, Suite 1600  
Salt Lake City, UT 84101  
Main +1 801 322 2000  
[cushmanwakefield.com](http://cushmanwakefield.com)

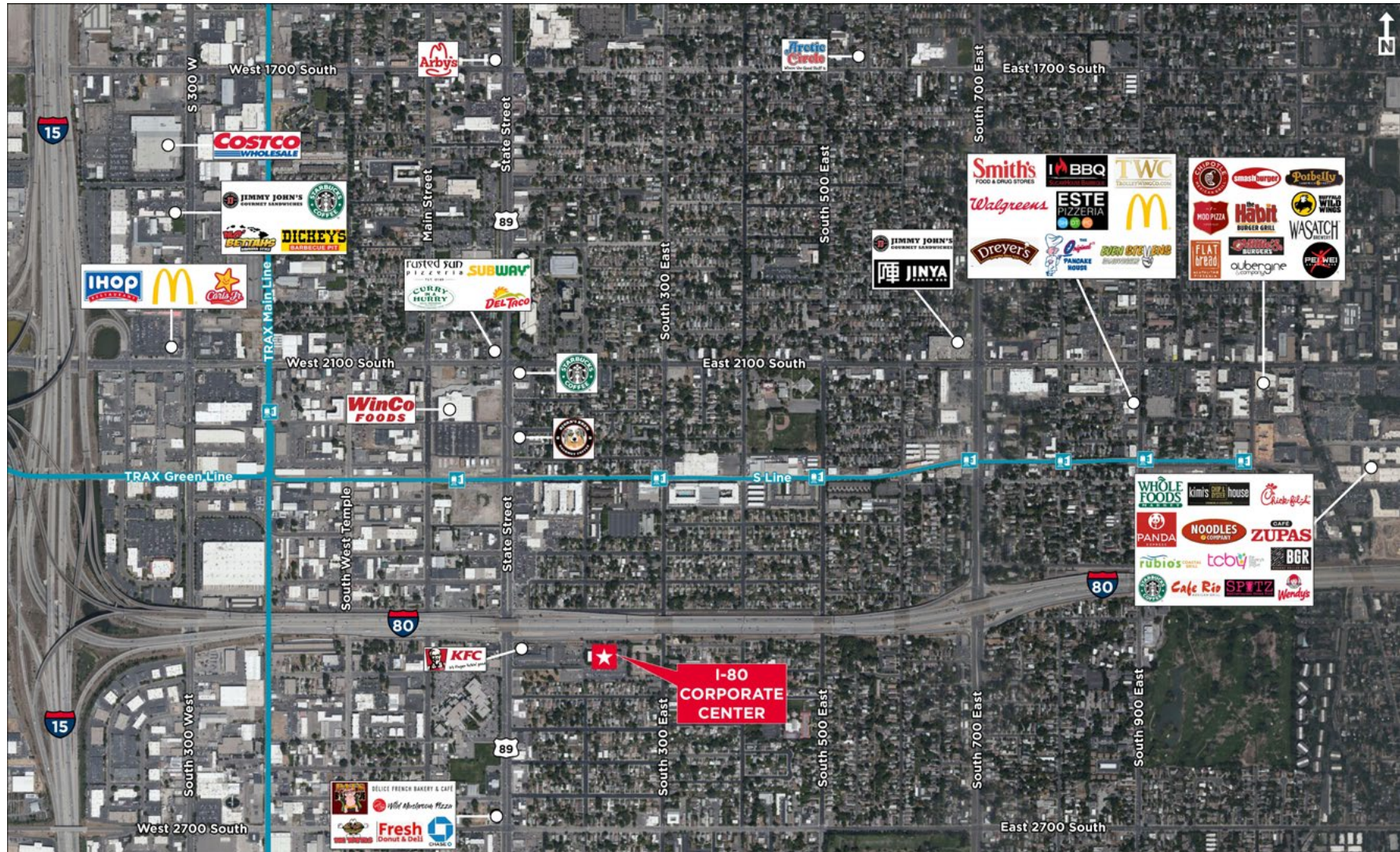
**Third Floor /** 13,883 RSF CONTIGUOUS

**Justin Bailey**  
Director  
+1 801 303 5493  
[justin.bailey@cushwake.com](mailto:justin.bailey@cushwake.com)

170 South Main, Suite 1600  
Salt Lake City, UT 84101  
Main +1 801 322 2000  
[cushmanwakefield.com](http://cushmanwakefield.com)



## Location Map



**Justin Bailey**  
 Director  
 +1 801 303 5493  
[justin.bailey@cushwake.com](mailto:justin.bailey@cushwake.com)

170 South Main, Suite 1600  
 Salt Lake City, UT 84101  
 Main +1 801 322 2000  
[cushmanwakefield.com](http://cushmanwakefield.com)