

# INNOVATIVE RESEARCH & DEVELOPMENT OPPORTUNITY

## RS/56

56 ROLAND STREET / CHARLESTOWN MA



**76,947 SF AVAILABLE FOR LEASE | MODERNIZED R&D CAMPUS**





# PLUG & PLAY AVAILABILITIES

FLEX, CREATIVE OFFICE SPACE



**PLUG & PLAY**



**5 MINUTE WALK TO  
ORANGE LINE &  
GREEN LINE**



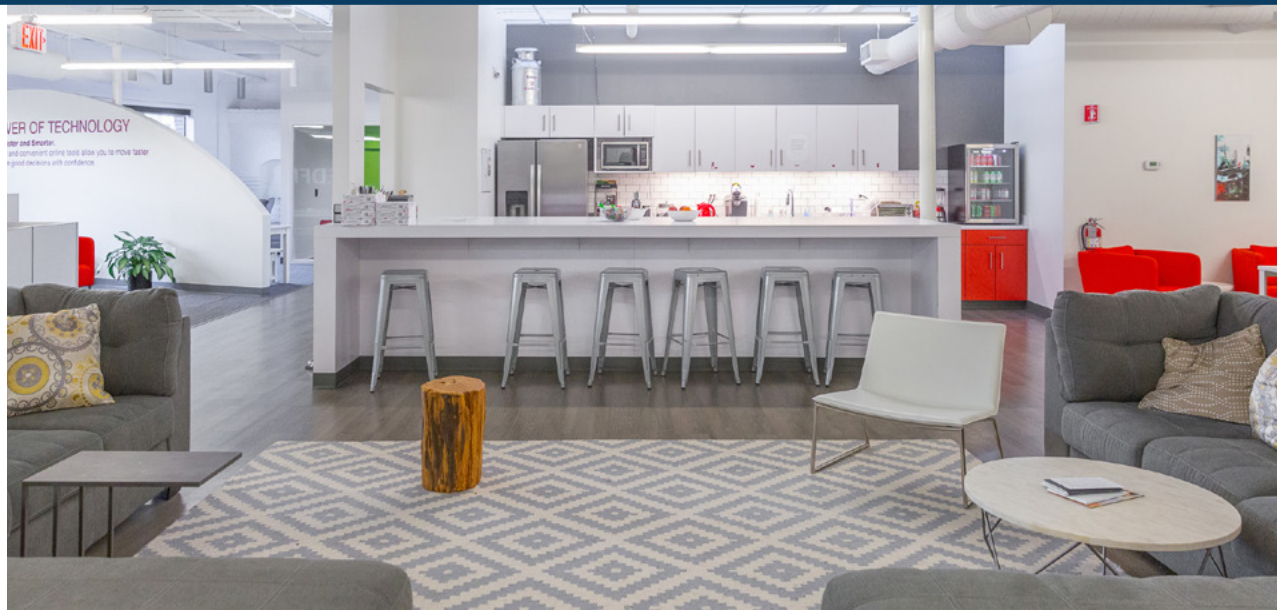
**INNOVATIVE OFFICE,  
R&D AND LAB  
OPPORTUNITIES**



**2000 AMP EXISTING  
5000 AMP UPGRADE  
COMING JAN. 2024**



**BIKE STORAGE &  
REPAIR STATION**





- 145,000 SF multi-tenant office/ R&D / Flex property
- On-site parking
- Fitness center with locker rooms & showers
- Outdoor courtyard
- Common area conference facilities
- Located on Somerville/Charlestown line, one block from I-93 exit 28
- On-site property management and security

**CLEAR HEIGHT:** 11-18' (slab to deck)

**ELEVATORS:** 3 Passenger (2,000, 2,500, 4,000 lbs.)  
1 Freight (4,000 lbs.)

**LOADING:** 3 Docks with Levelers, 2 Ramped Loading Doors

**UTILITIES:**

Water: Boston Water & Sewer

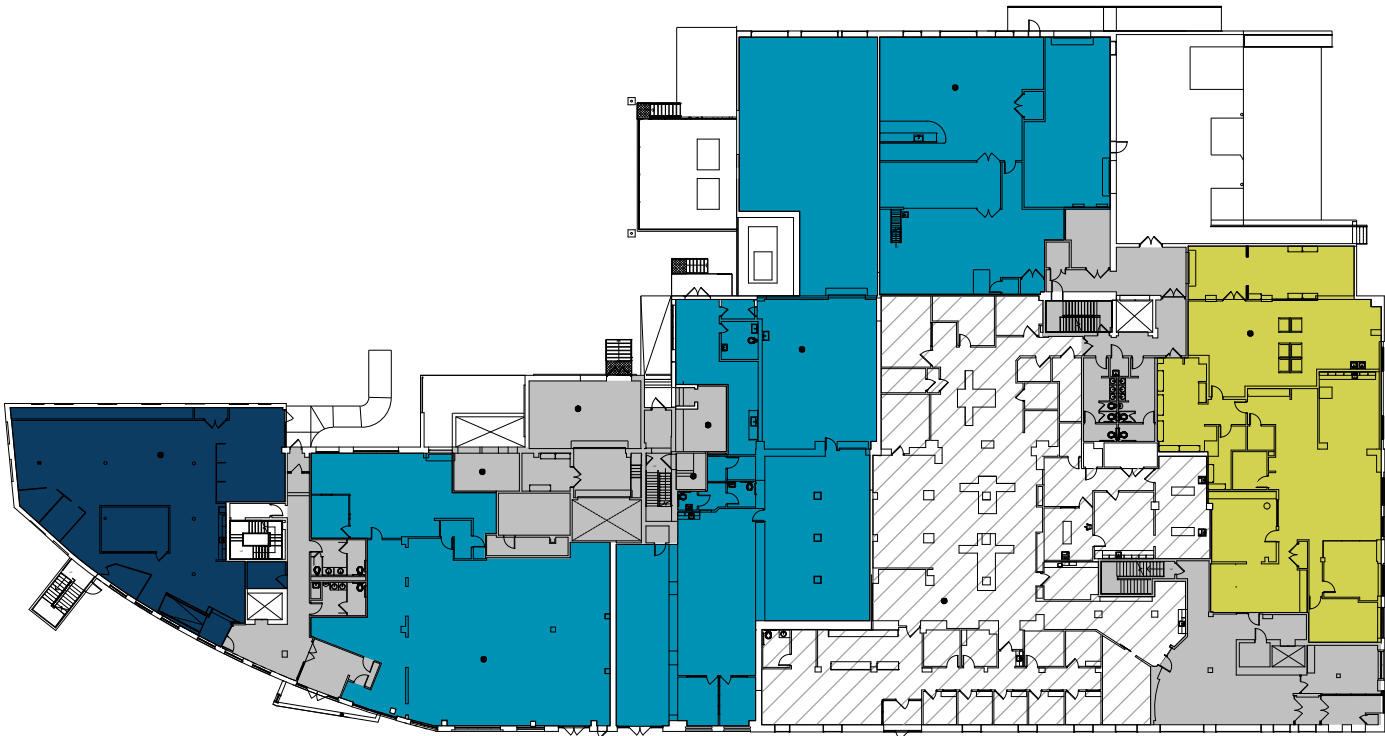
Power: Eversource

Gas: National Grid

Tel/Data: Verizon, Comcast, WebPass

Fiber: Wicked Bandwidth

**FIRST FLOOR** | 4,208 SF - 20,093 FLEX SPACE

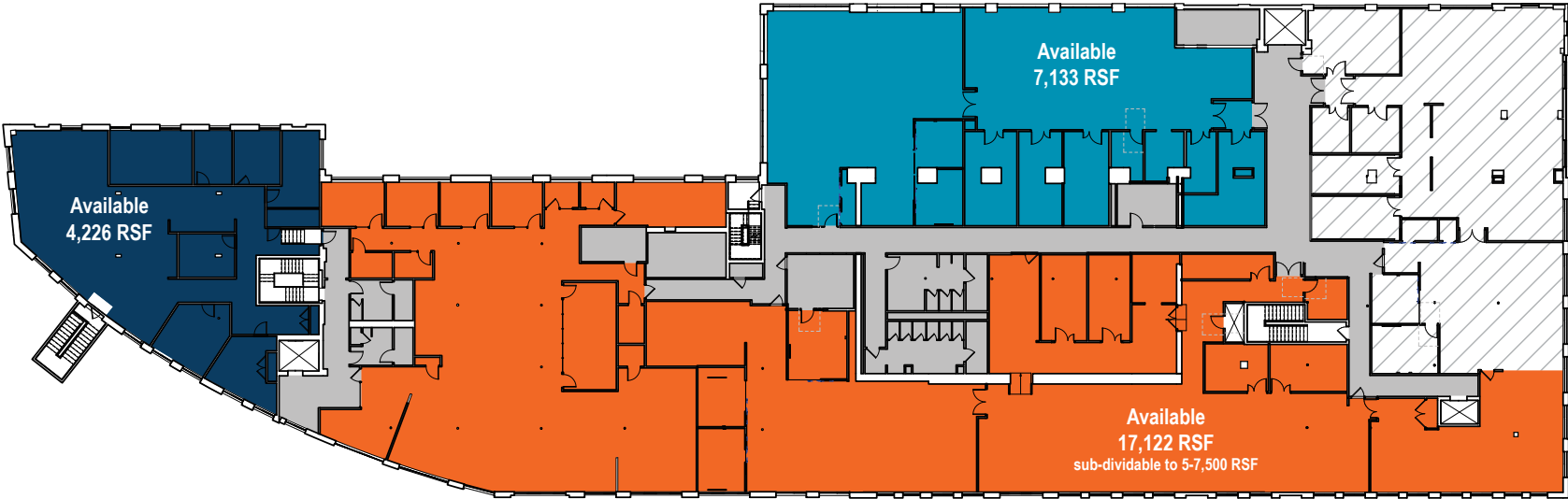


- |   |                 |   |                 |   |                       |
|---|-----------------|---|-----------------|---|-----------------------|
|  | OCCUPANT AREA 1 |  | OCCUPANT AREA 3 |  | BUILDING SERVICE AREA |
|  | OCCUPANT AREA 2 |  | OCCUPANT AREA 4 |  | OCCUPIED              |

SECOND FLOOR | 3,000 - 9,923 OFFICE SPACE

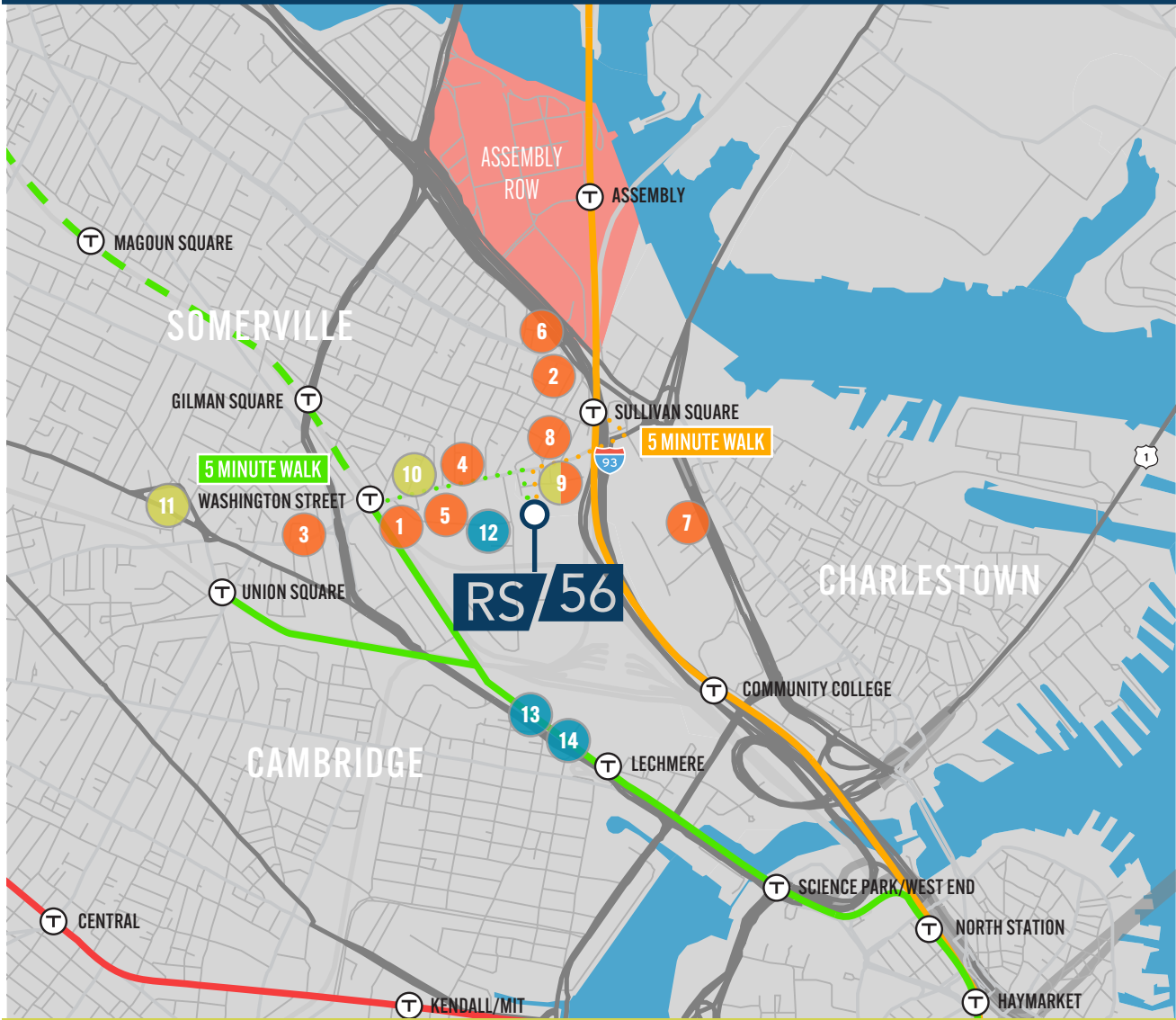


THIRD FLOOR | 4,226 - 17,122 OFFICE & LAB





# LOCATION & AMENITIES



## RESTAURANTS

- 1 OLIVEIRAS STEAKHOUSE
- 2 MOUNT VERNON RESTAURANT & PUB
- 3 NU KITCHEN SOMERVILLE
- 4 ROYAL PIZZA & SUBS
- 5 DRAFT
- 6 TACO LOCO MEXICAN GRILL
- 7 TRADESMAN COFFEE SHOP AND PIZZA BAR
- 8 DUNKIN'
- 9 TAVERN AT THE END OF THE WORLD

## BARS

- 9 TAVERN AT THE END OF THE WORLD
- 10 MICHAEL'S BAR
- 11 UNION TAVERN

## HOTELS

- 12 HOLIDAY INN BOSTON BUNKER HILL AREA
- 13 FAIRFIELD INN & SUITES BY MARRIOTT
- 14 HAMPTON INN BOSTON/CAMBRIDGE

KENDALL/MIT - 2 miles ↓ DOWNTOWN BOSTON - 2.5 miles ↘ LOGAN AIRPORT - 5.5 miles →



## 56 ROLAND STREET / CHARLESTOWN

---

**SCOTT GREDLER**  
EXECUTIVE DIRECTOR

+1 617 204 5975  
+1 617 997 3171 (cell)  
[scott.gredler@cushwake.com](mailto:scott.gredler@cushwake.com)

**DUNCAN GRATTON**  
EXECUTIVE MANAGING DIRECTOR

+1 617 279 4540  
+1 617 590 8901 (cell)  
[duncan.gratton@cushwake.com](mailto:duncan.gratton@cushwake.com)

**JIM MURPHY**  
SENIOR ASSOCIATE

+1 617 204 4168  
+1 781 264 4442 (cell)  
[jim.r.murphy@cushwake.com](mailto:jim.r.murphy@cushwake.com)

**RYAN HURD**  
DIRECTOR

+1 617 279-4537  
+1 978 835-6088 (cell)  
[ryan.hurd@cushwake.com](mailto:ryan.hurd@cushwake.com)

©2022 Cushman & Wakefield. All rights reserved. The information contained in this communication is strictly confidential. This information has been obtained from sources believed to be reliable but has not been verified. NO WARRANTY OR REPRESENTATION, EXPRESS OR IMPLIED, IS MADE AS TO THE CONDITION OF THE PROPERTY (OR PROPERTIES) REFERENCED HEREIN OR AS TO THE ACCURACY OR COMPLETENESS OF THE INFORMATION CONTAINED HEREIN, AND SAME IS SUBMITTED SUBJECT TO ERRORS, OMISSIONS, CHANGE OF PRICE, RENTAL OR OTHER CONDITIONS, WITHDRAWAL WITHOUT NOTICE, AND TO ANY SPECIAL LISTING CONDITIONS IMPOSED BY THE PROPERTY OWNER(S). ANY PROJECTIONS, OPINIONS OR ESTIMATES ARE SUBJECT TO UNCERTAINTY AND DO NOT SIGNIFY CURRENT OR FUTURE PROPERTY PERFORMANCE.

