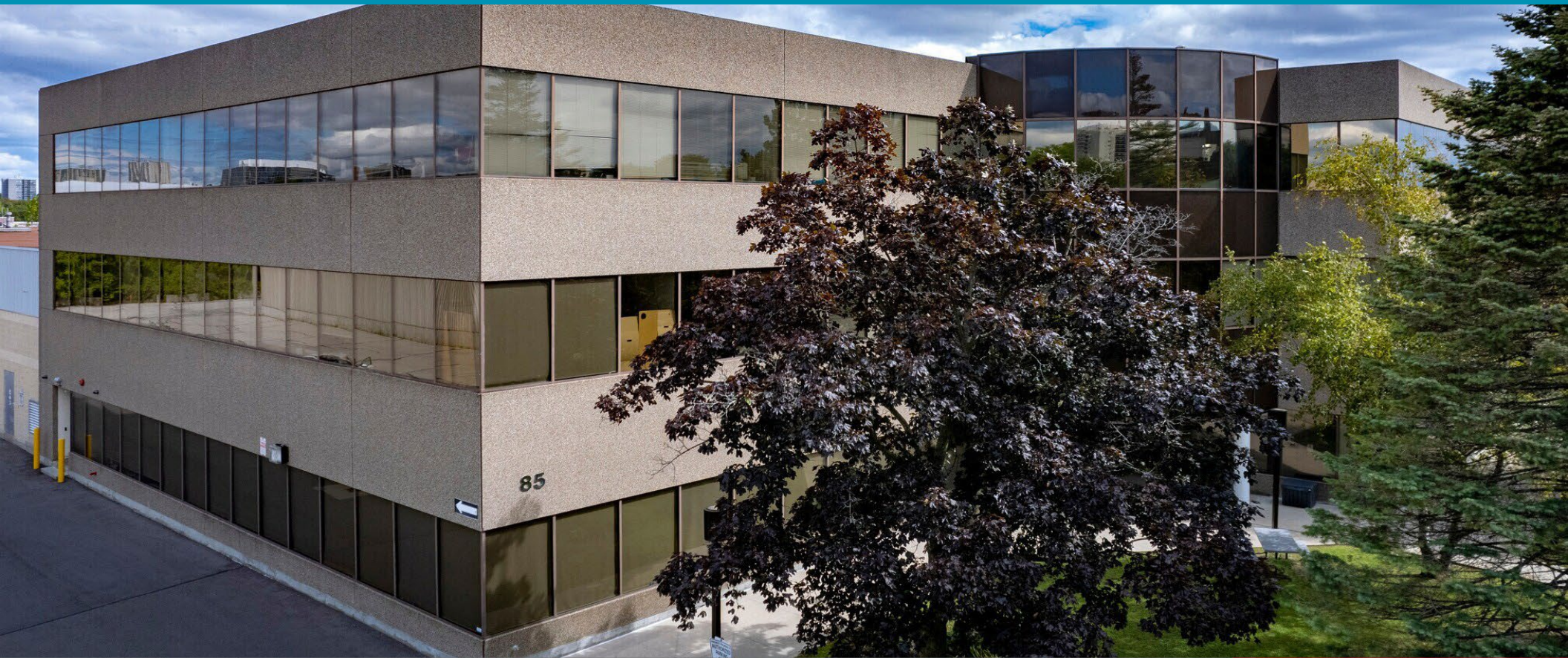


85 SCARSDALE ROAD

Toronto, ON

FOR LEASE



For further information, please contact:

***Jordan Mustard** / Vice President / +1 416 756 5424 / jordan.mustard@cushwake.com

CUSHMAN & WAKEFIELD ULC, BROKERAGE / 1100-3100 Steeles Avenue East, Markham, ON L3R 8T3 / +1 416 494 9500



©2023 Cushman & Wakefield. All rights reserved. The information contained in this communication is strictly confidential. This information has been obtained from sources believed to be reliable but has not been verified. NO WARRANTY OR REPRESENTATION, EXPRESS OR IMPLIED, IS MADE AS TO THE CONDITION OF THE PROPERTY (OR PROPERTIES) REFERENCED HEREIN OR AS TO THE ACCURACY OR COMPLETENESS OF THE INFORMATION CONTAINED HEREIN, AND SAME IS SUBMITTED SUBJECT TO ERRORS, OMISSIONS, CHANGE OF PRICE, RENTAL OR OTHER CONDITIONS, WITHDRAWAL WITHOUT NOTICE, AND TO ANY SPECIAL LISTING CONDITIONS IMPOSED BY THE PROPERTY OWNER(S). ANY PROJECTIONS, OPINIONS OR ESTIMATES ARE SUBJECT TO UNCERTAINTY AND DO NOT SIGNIFY CURRENT OR FUTURE PROPERTY PERFORMANCE.

[CUSHMANWAKEFIELD.COM](https://www.cushmanwakefield.com)

85 SCARSDALE ROAD

Toronto, ON

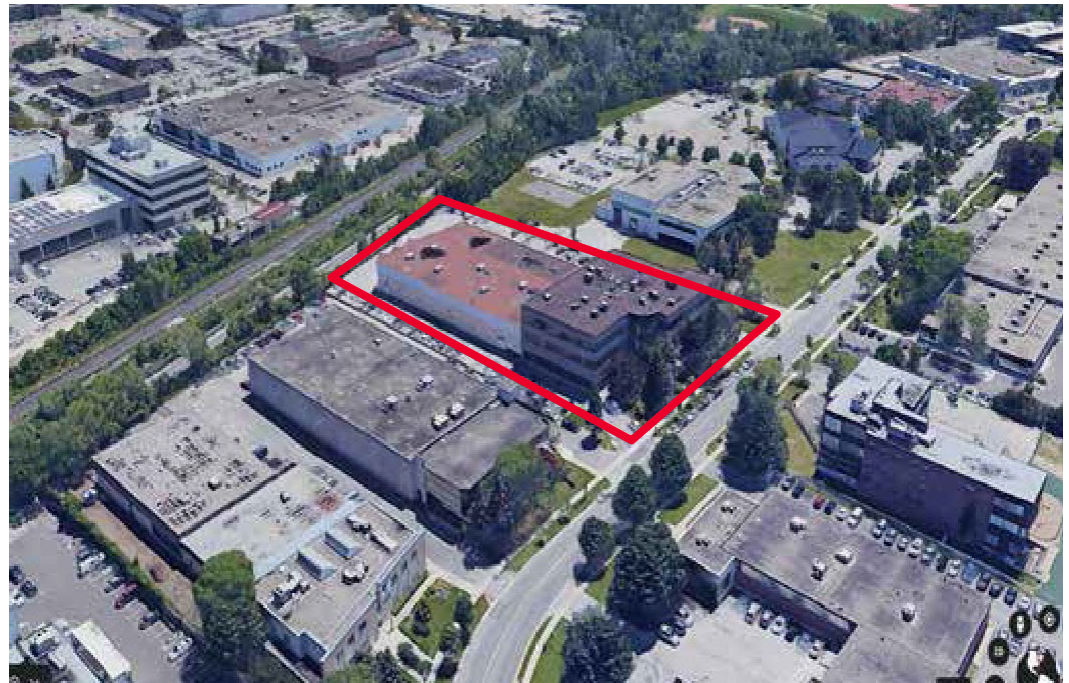
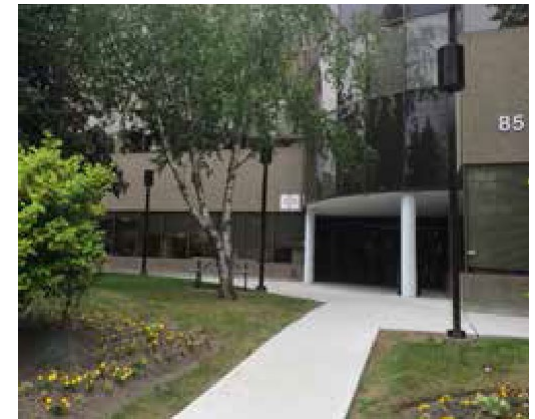
FOR LEASE

UNIT SPECIFICATIONS

UNIT 206	2,521 SF
SEMI-GROSS RENT	\$28.00 PSF

PROPERTY HIGHLIGHTS

- Nicely Finished 2nd Floor Office Unit With A Mix Of Private Offices And Open Area
- Excellent Access To Dvp, 404 And 401 And Only 20 Minutes To Downtown Toronto
- Lots Of Amenities Nearby
- Available Immediately



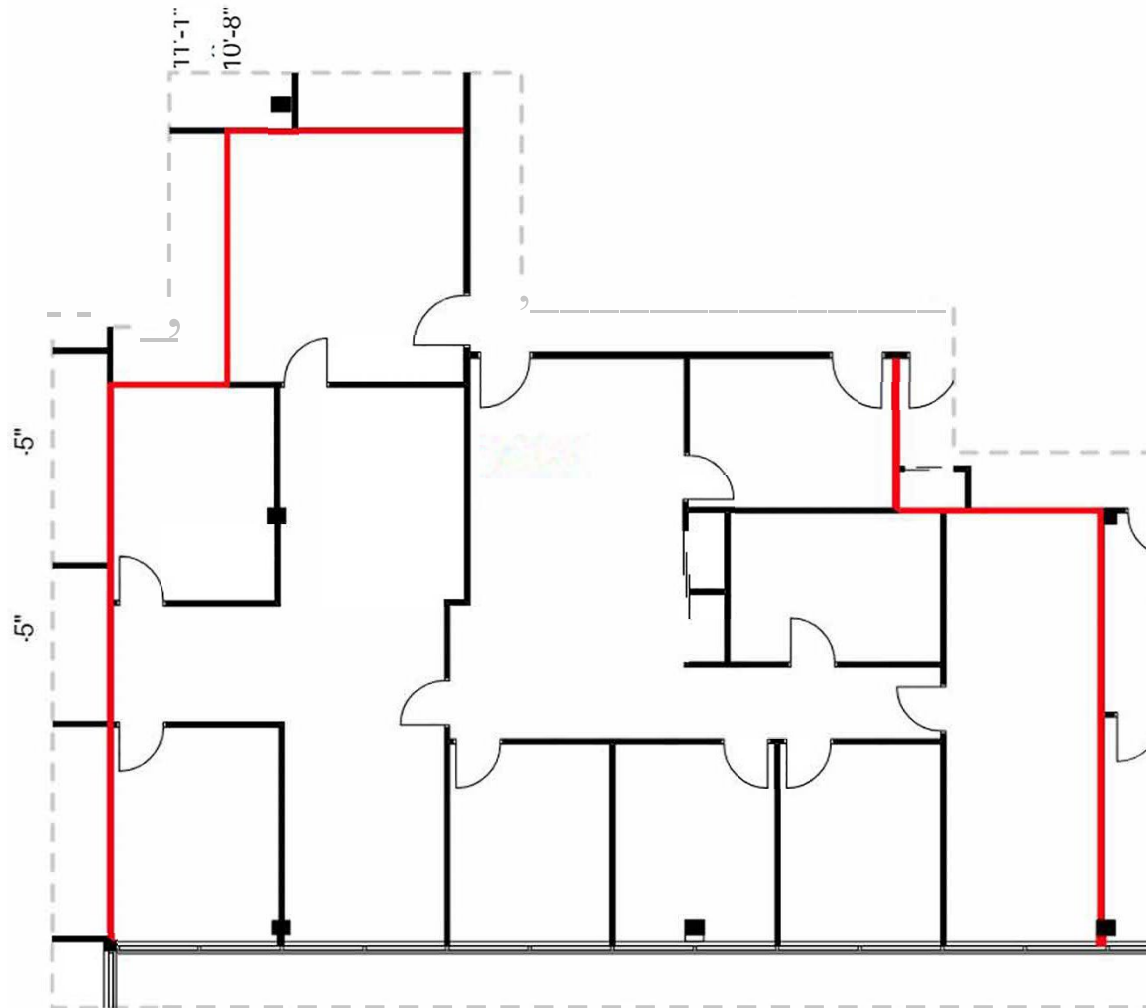
85 SCARSDALE ROAD

Toronto, ON

FLOOR PLANS

FOR LEASE

2ND FLOOR - UNIT 206 | 2,521 SF



85 SCARSDALE ROAD

Toronto, ON

INTERIOR PHOTOS

FOR LEASE



Open Area



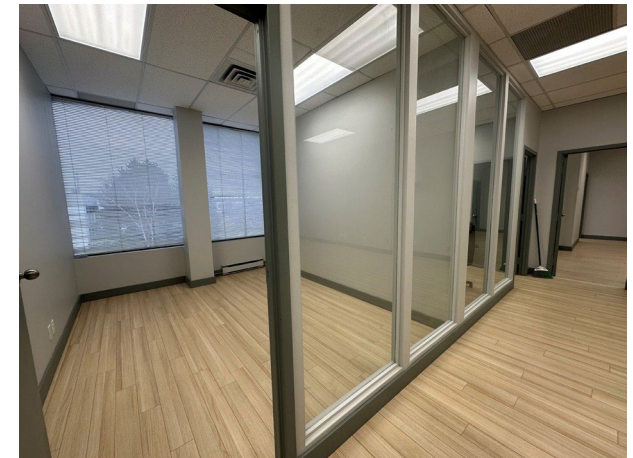
Reception



Exterior Office



Kitchenette



Office Corridor

85 SCARSDALE ROAD

Toronto, ON

E1.0 ZONING PERMITTED USES

FOR LEASE

PERMITTED USES:

- Ambulance Depot
- Animal Shelter
- Artist Studio
- Automated Banking Machine
- Bindery
- Building Supply Yards
- Carpenter's Shop
- Cold Storage
- Contractor's Establishment
- Custom Workshop
- Dry Cleaning or Laundry Plant
- Financial Institution
- Fire Hall
- Industrial Sales and Service Use
- Kennel
- Laboratory
- Manufacturing Uses
- Office
- Park
- Performing Arts Studio
- Pet Services
- Police Station
- Printing Establishment
- Production Studio
- Public Works Yard
- Service Shop
- Software Development and Processing
- Warehouse
- Wholesaling Use

USE WITH CONDITIONS:

In the E zone, the following uses are permitted if they comply with the specific conditions associated with the reference number(s) for each use in Clause 60.20.20.100:

- Body Rub Service
- Cogeneration Energy
- Crematorium
- Drive Through Facility
- Eating Establishment
- Marihuana production facility
- Metal Factory involving Forging and Stamping
- Open Storage
- Public Utility
- Recovery Facility
- Recreation Use
- Renewable Energy
- Retail Service
- Retail Store
- Shipping Terminal
- Take-out Eating Establishment
- Transportation Use
- Vehicle Depot
- Vehicle Fuel Station
- Vehicle Repair Shop
- Vehicle Service Shop
- Vehicle Washing Establishment



For further information, please contact:

***Jordan Mustard** / Vice President / +1 416 756 5424 / jordan.mustard@cushwake.com

CUSHMAN & WAKEFIELD ULC, BROKERAGE / 1100-3100 Steeles Avenue East, Markham, ON L3R 8T3 / +1 416 494 9500

