



BODO OFFICE SPACES FOR LEASE



THE NORTHRUP BUILDING

405 South 8th Street
Boise, Idaho 83702

1,023 TO 2,370 SF

PROPERTY HIGHLIGHTS

Suite 250	2,370 SF - \$18.00/SF FSEJ
Suite 255	1,678 SF - \$16.00/SF FSEJ
Suite 371	1,023 SF - \$19.00/SF FSEJ
Lease Type	FSEJ
Preferred Term	3 to 5 Years
T.I. Allowance	Negotiable
Building Size	46,824 SF Total
Location	Downtown Boise
LockBox	No, Contact Agents
Availability	Immediate



BREE WELLS
Director
Office | Capital Markets
+1 208 287 9492
bree.wells@cushwake.com

JENNIFER MCENTEE
Senior Director
Office | Capital Markets
+1 208 287 9495
jennifer.mcentee@cushwake.com

BRAYDON TORRES
Associate
Office | Capital Markets
+1 208 207 9485
braydon.torres@cushwake.com

999 W MAN ST. SUITE 1300, BOISE, IDAHO 83702 | CUSHMANWAKEFIELD.COM

©2025 Cushman & Wakefield. All rights reserved. The information contained in this communication is strictly confidential. This information has been obtained from sources believed to be reliable but has not been verified. No warranty or representation, express or implied, is made as to the condition of the property (or properties) referenced herein or as to the accuracy or completeness of the information contained herein, and same is submitted subject to errors, omissions, change of price, rental or other conditions, withdrawal without notice, and to any special listing conditions imposed by the property owner(s). Any projections, opinions or estimates are subject to uncertainty and do not signify current or future property performance.



**CUSHMAN &
WAKEFIELD**

THE NORTHRUP BUILDING

405 South 8th Street, Boise, Idaho 83702

1,023 TO 2,370 SF FOR LEASE



LISTING FEATURES

- Office spaces in Historic BODO / 8th Street Marketplace in Downtown Boise - [Click Here for Google 360 View](#)
- Available spaces currently consists of private offices and open collaborative work / sales areas with common area restrooms and elevator access & surrounded by metered street parking & public parking garages
- Co-tenants include Liquid Lounge, Solid Bar & Grill & Slow By Slow Coffee House
- Surrounded by various retailers, restaurants, financial institutions and other professional services
- Contact agents to discuss various uses and layouts and to schedule a walkthrough today!!

BREE WELLS

Director
Office | Capital Markets
+1 208 287 9492
bree.wells@cushwake.com

JENNIFER MCENTEE

Senior Director
Office | Capital Markets
+1 208 287 9495
jennifer.mcentee@cushwake.com

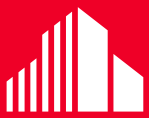
BRAYDON TORRES

Associate
Office | Capital Markets
+1 208 207 9485
braydon.torres@cushwake.com

999 W Main Street, Ste 1300

Boise, Idaho 83702
Main +1 208 287 9500
Fax +1 208 287 9501
cushmanwakefield.com

©2025 Cushman & Wakefield. All rights reserved. The information contained in this communication is strictly confidential. This information has been obtained from sources believed to be reliable but has not been verified. No warranty or representation, express or implied, is made as to the condition of the property (or properties) referenced herein or as to the accuracy or completeness of the information contained herein, and same is submitted subject to errors, omissions, change of price, rental or other conditions, withdrawal without notice, and to any special listing conditions imposed by the property owner(s). Any projections, opinions or estimates are subject to uncertainty and do not signify current or future property performance.



**CUSHMAN &
WAKEFIELD**

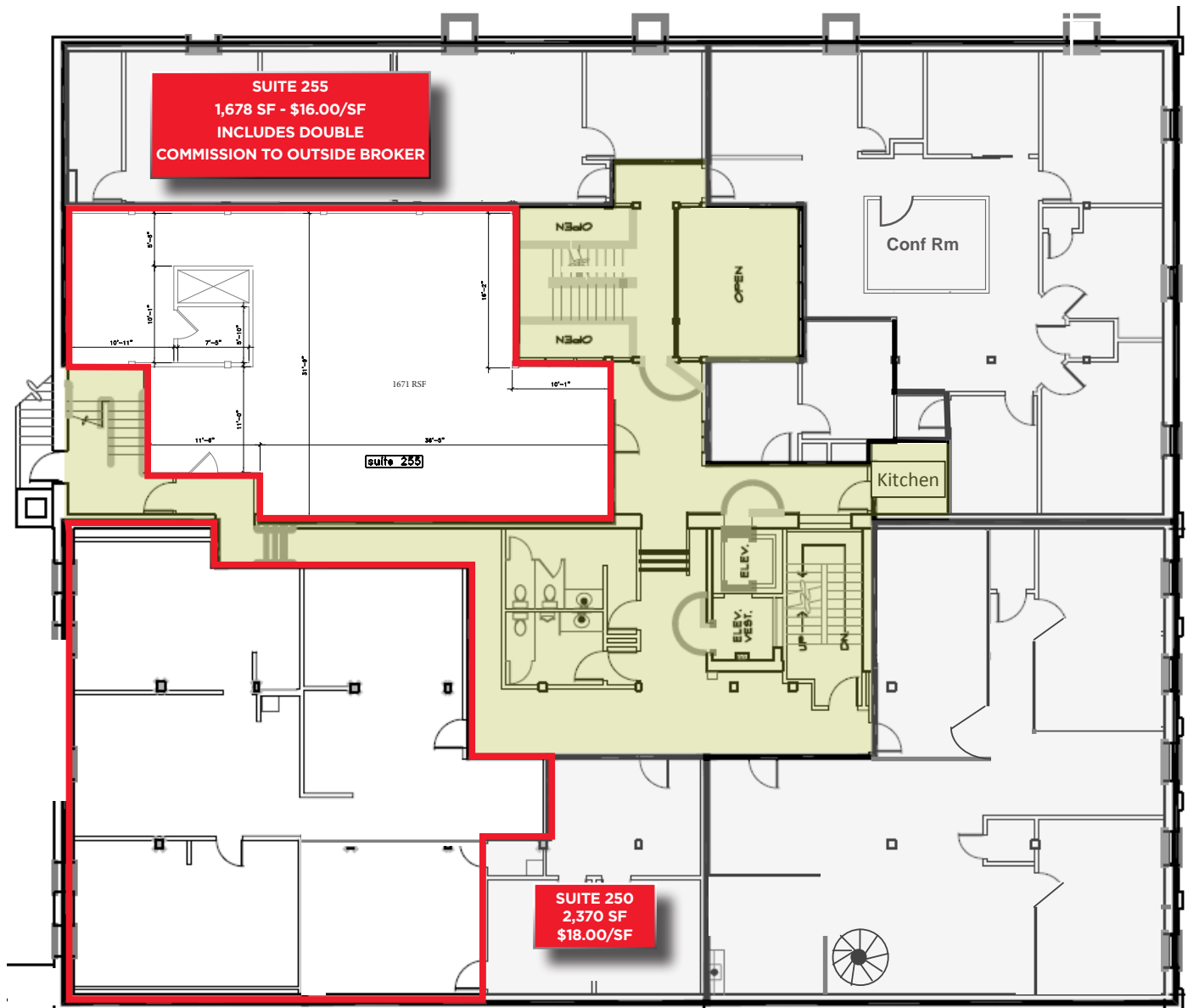
THE NORTHRUP BUILDING

405 South 8th Street, Boise, Idaho 83702

1,023 TO 2,370 SF FOR LEASE



2ND FLOOR OFFICE SPACE FOR LEASE - 1,678 TO 2,370 SF - \$18.00/SF



BREE WELLS

Director
Office | Capital Markets
+1 208 287 9492
bree.wells@cushwake.com

JENNIFER MCENTEE

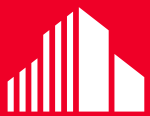
Senior Director
Office | Capital Markets
+1 208 287 9495
jennifer.mcentee@cushwake.com

BRAYDON TORRES

Associate
Office | Capital Markets
+1 208 207 9485
braydon.torres@cushwake.com

999 W Main Street, Ste 1300
Boise, Idaho 83702
Main +1 208 287 9500
Fax +1 208 287 9501
cushmanwakefield.com

©2025 Cushman & Wakefield. All rights reserved. The information contained in this communication is strictly confidential. This information has been obtained from sources believed to be reliable but has not been verified. No warranty or representation, express or implied, is made as to the condition of the property (or properties) referenced herein or as to the accuracy or completeness of the information contained herein, and same is submitted subject to errors, omissions, change of price, rental or other conditions, withdrawal without notice, and to any special listing conditions imposed by the property owner(s). Any projections, opinions or estimates are subject to uncertainty and do not signify current or future property performance.



**CUSHMAN &
WAKEFIELD**

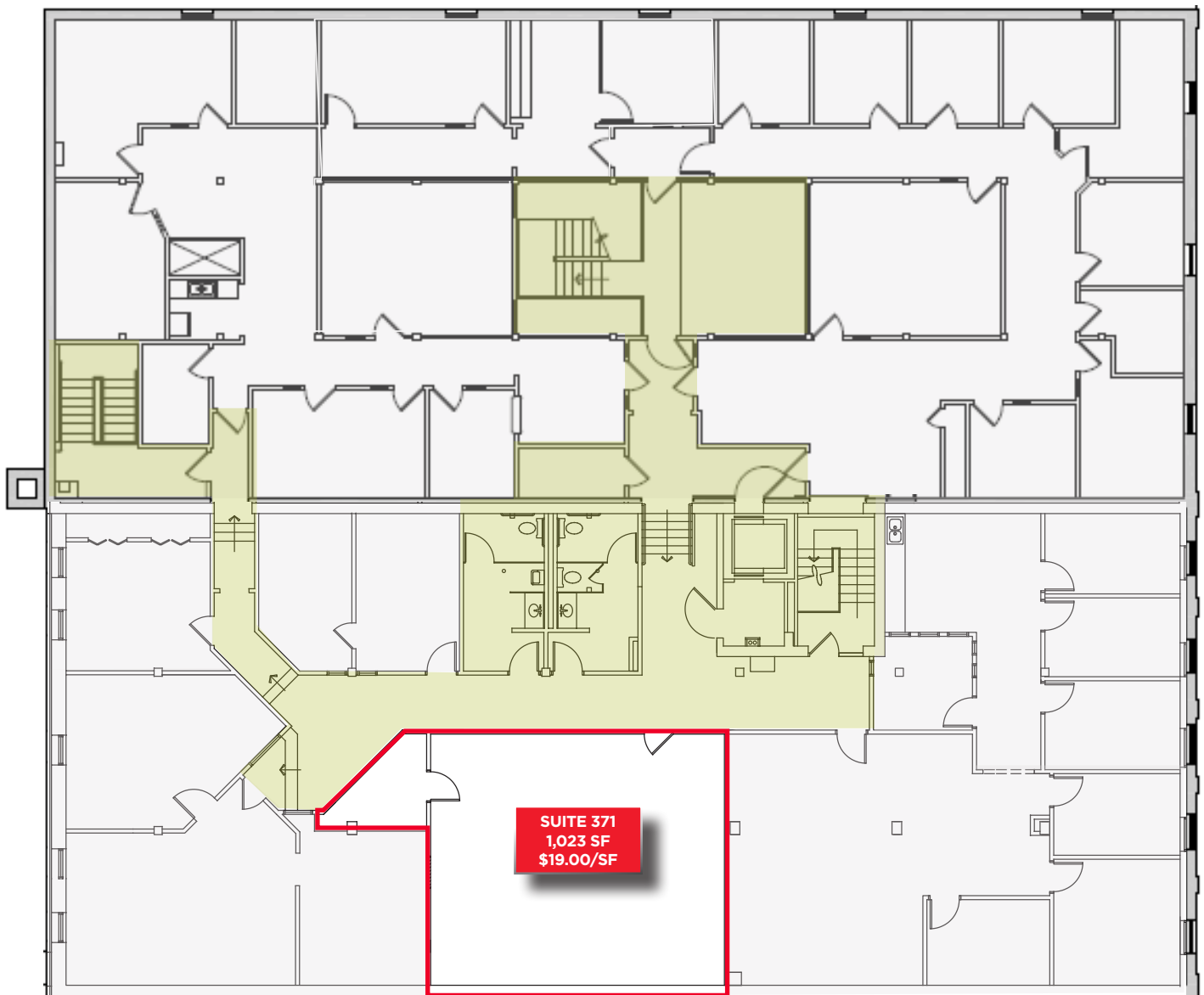
THE NORTHRUP BUILDING

405 South 8th Street, Boise, Idaho 83702

1,023 TO 2,370 SF FOR LEASE



THIRD FLOOR OFFICE SPACE - 1,023 SF - \$19.00/SF FSEJ



BREE WELLS

Director
Office | Capital Markets
+1 208 287 9492
bree.wells@cushwake.com

JENNIFER MCENTEE

Senior Director
Office | Capital Markets
+1 208 287 9495
jennifer.mcentee@cushwake.com

BRAYDON TORRES

Associate
Office | Capital Markets
+1 208 207 9485
braydon.torres@cushwake.com

999 W Main Street, Ste 1300
Boise, Idaho 83702
Main +1 208 287 9500
Fax +1 208 287 9501
cushmanwakefield.com

©2025 Cushman & Wakefield. All rights reserved. The information contained in this communication is strictly confidential. This information has been obtained from sources believed to be reliable but has not been verified. No warranty or representation, express or implied, is made as to the condition of the property (or properties) referenced herein or as to the accuracy or completeness of the information contained herein, and same is submitted subject to errors, omissions, change of price, rental or other conditions, withdrawal without notice, and to any special listing conditions imposed by the property owner(s). Any projections, opinions or estimates are subject to uncertainty and do not signify current or future property performance.



**CUSHMAN &
WAKEFIELD**

THE NORTHRUP BUILDING

405 South 8th Street, Boise, Idaho 83702

1,023 TO 2,370 SF FOR LEASE



LOCATION AERIAL





**CUSHMAN &
WAKEFIELD**

THE NORTHRUP BUILDING

405 South 8th Street, Boise, Idaho 83702

1,023 TO 2,370 SF FOR LEASE





**CUSHMAN &
WAKEFIELD**

THE NORTHRUP BUILDING

405 South 8th Street, Boise, Idaho 83702

1,023 TO 2,370 SF FOR LEASE



NATIONAL ACCOLADES

It's no news to us – the Boise Metro is a great place to be. We chuckle in agreement when we're recognized for livability and recreation, and welcome visitors to come see what the hype is all about. Most of the time, we just appreciate not being confused with Iowa. Take a look our latest recognition. Click the tiles below to view - View All Accolades Here: <https://bvvp.org/lifestyle/national-accolades>

Best Places to Live in the U.S.

U.S. News
June 2022

Next Great Food City

Food & Wine
April 2022

#5 Top Emerging Industrial Markets

CommercialEdge
February 2022

#1 Most Promising US City

RocketHomes
December 2021

#2 Nampa, ID & #3 Meridian Top Boomtowns

Smart Asset
November 2021

Ada County #17 in Talent Attraction

EMSI Burning Glass
November 2021

#8 Best Places for Outdoor Enthusiasts to Live and Work

Smart Asset
October 2021

#10 Best City for Young Professionals

SmartAsset
June 2021

Safest Cities in America

SmartAsset
April 2021

#5 Best State

US News &
World Report
March 2021

Best-Performing Cities

Milken Institute
February 2021

#4 Best Place to Find a Job

WalletHub
February 2021

Top 5 Metros for First Time Homebuyers

Move.org
January 2021

Cities With the Best Work-Life Balance

SmartAsset
January 2021

#4 Best City for Early Retirees

SmartAsset
December 2020

#4 Best City for First Time Homebuyers

SmartAsset
October 2020

#1 City Whose Jobs Are Recovering

WalletHub
October 2020

Most Moved To Cities

Business Insider
September 2020