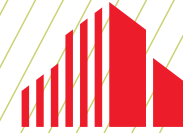


FOR LEASE



CUSHMAN &
WAKEFIELD



VIRTUAL TOUR FOR SUITE 100

7803 GLENROY ROAD
BLOOMINGTON, MN

7803 Glenroy Road | Bloomington, MN

PROPERTY HIGHLIGHTS

- Beautifully maintained 34,659 SF office building
- Quality ownership and building management on-site
- Close proximity & access to I-494, Hwy 100, & Hwy 62
- Nearby numerous restaurants, retail and hotels
- Monument signage available
- Up to 10,000 SF of space available with 1st floor access
- Minutes from Minneapolis-St. Paul International Airport
- Close proximity to Nine Mile Creek Regional Trail, Normandale Lake Park, and other outdoor recreation

PROPERTY INFORMATION

- **Net Rate:**
 - \$13.00 per SF
- **2026 Operating Expenses & Taxes:**
 - Operating Expenses \$ 9.28 PSF
 - Real Estate Taxes \$ 2.85 PSF
 - TOTAL \$12.13 PSF

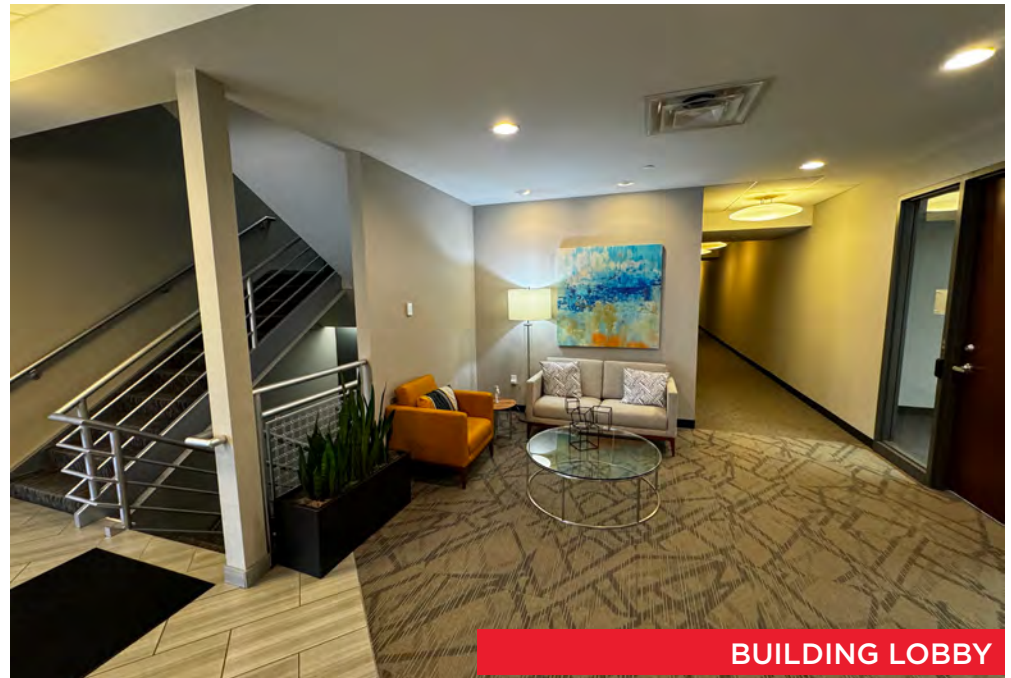
PROPERTY AVAILABILITIES

Click Suite Number Below to View Floorplan

Suite Number	Square Footage
100	7,113 RSF
300	6,033 RSF
(Available 30 Days)	



BUILDING CONFERENCE ROOM



BUILDING LOBBY

7803 Glenroy Road | Bloomington, MN

PROPERTY PHOTOS



LOWER LEVEL SEATING AREA



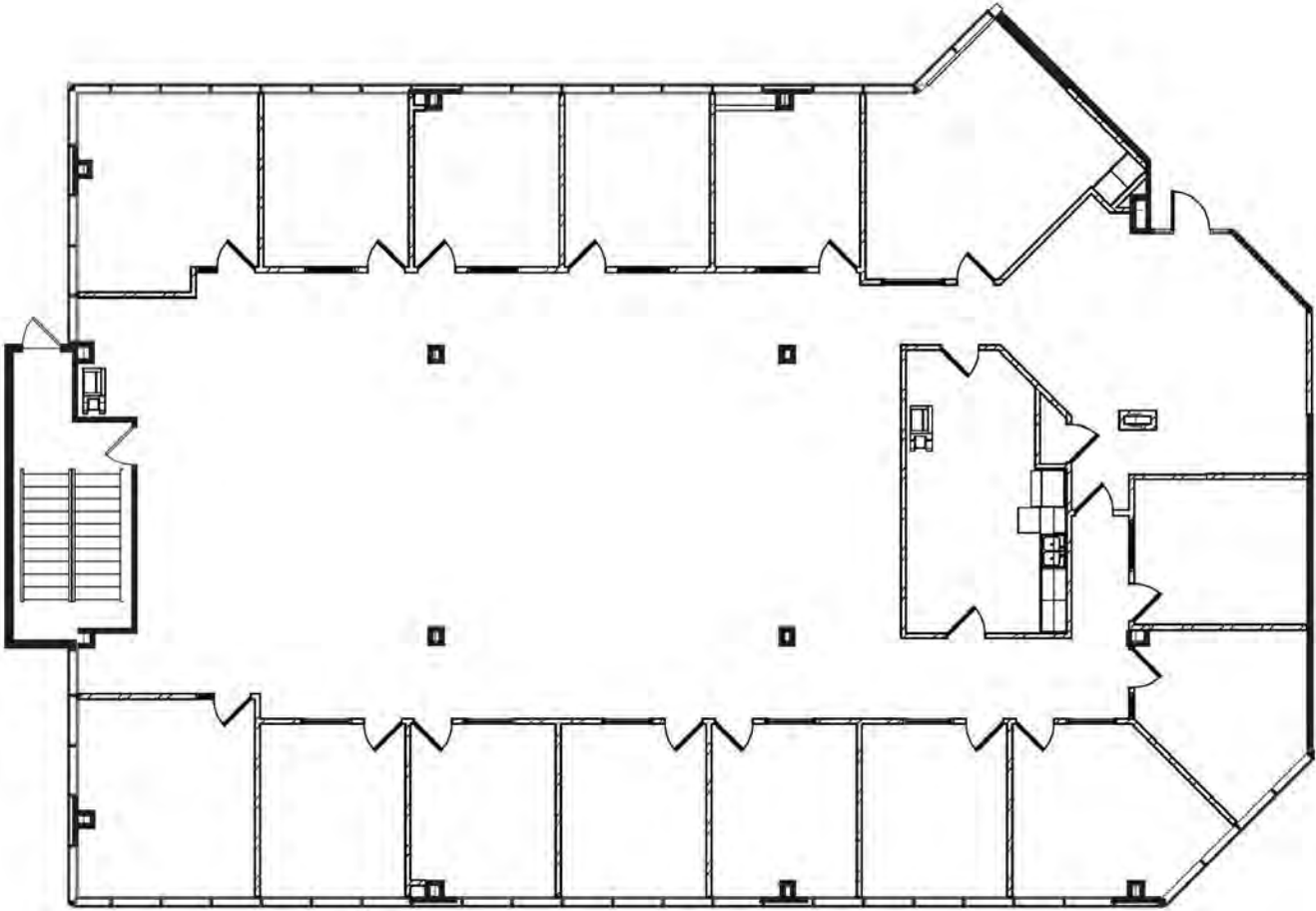
BUILDING



PATIO

Suite 100 - 7,113 SF

VIRTUAL TOUR FOR SUITE 100



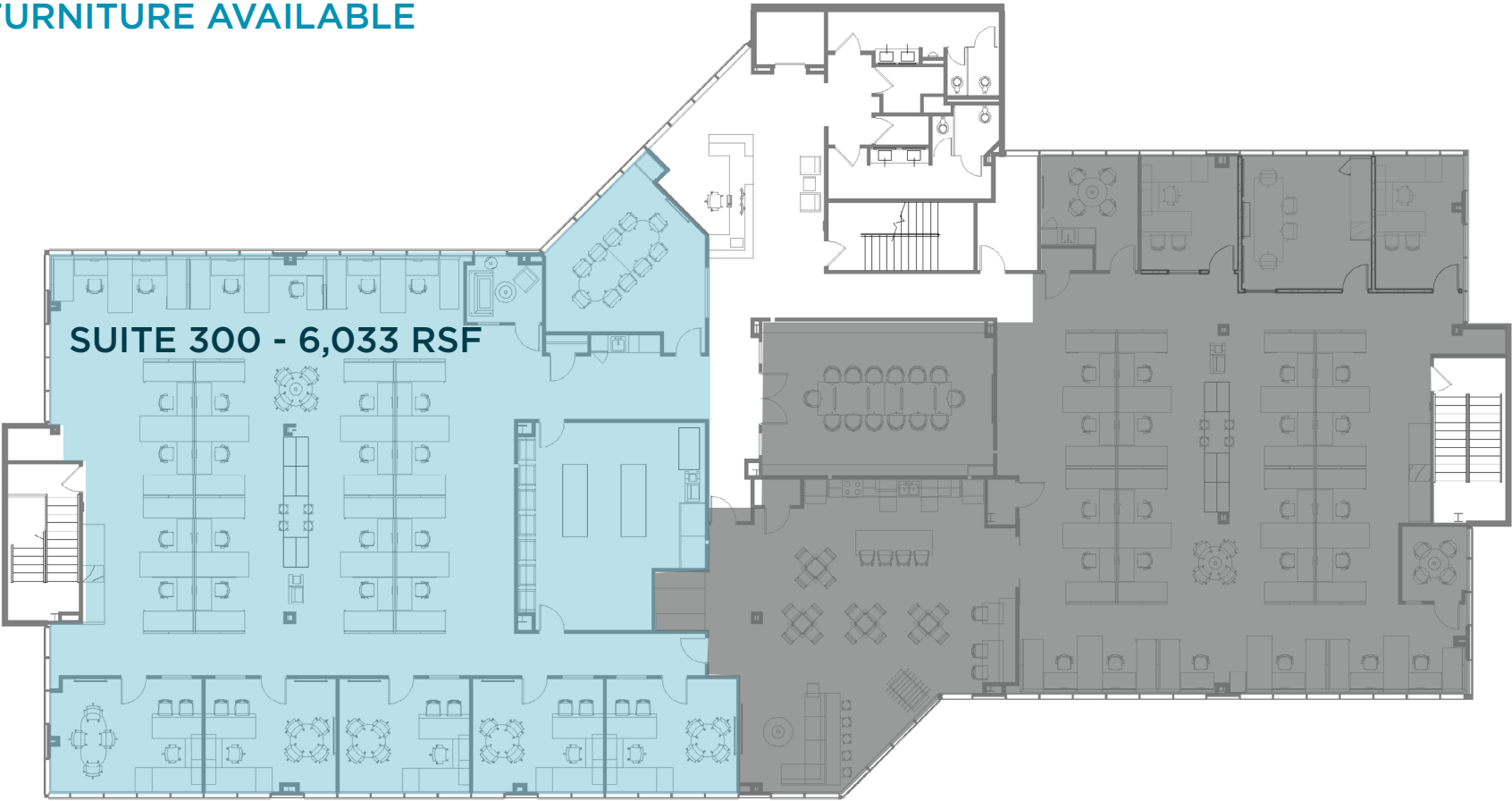
KEY PLAN - 1ST FLOOR



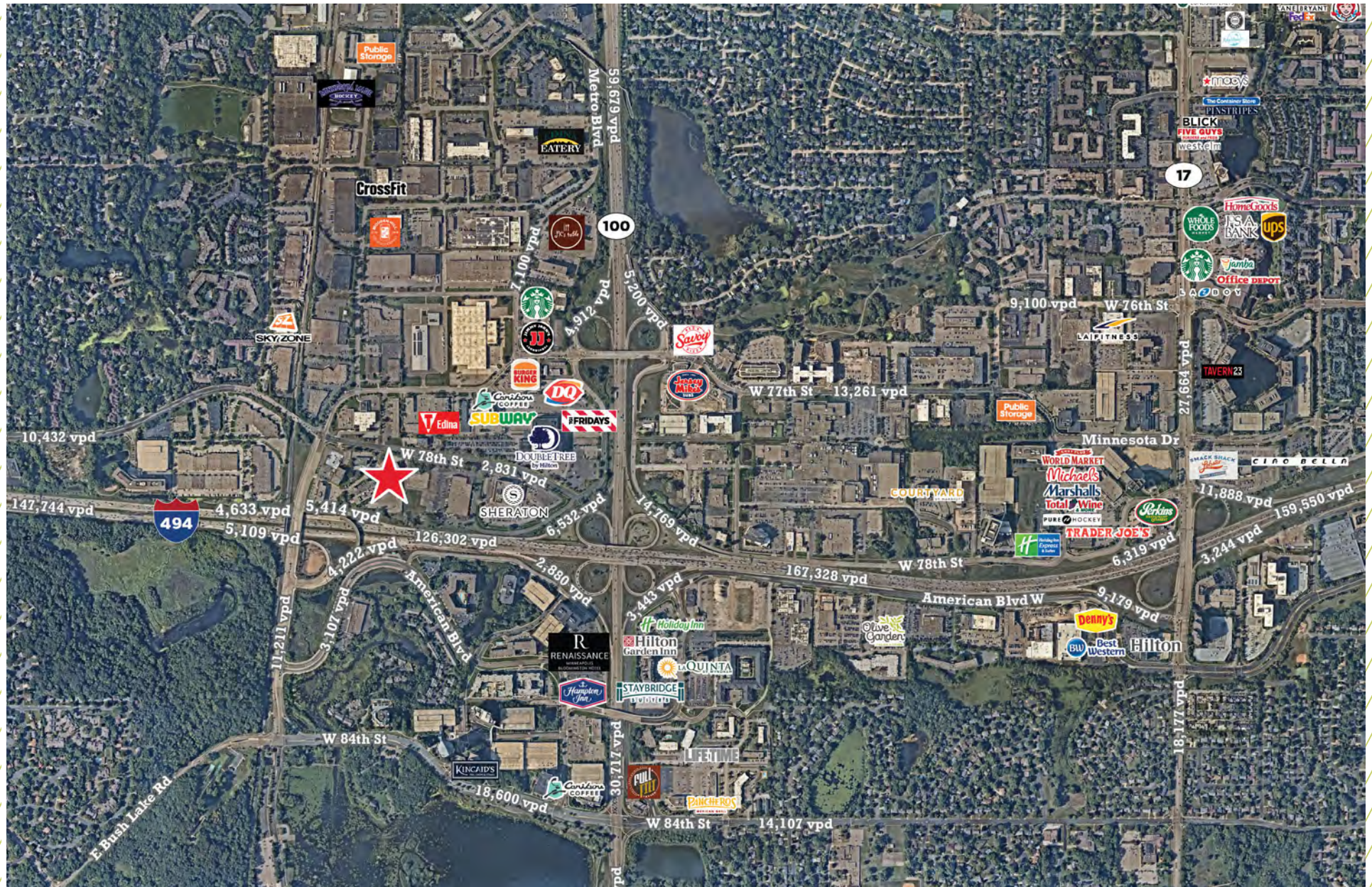
FLOOR
PLAN

Suite 300 - 6,033 SF

FURNITURE AVAILABLE



FLOOR
PLAN



AREA AMENITIES



LOCATION
AERIAL



DEMOGRAPHICS (WITHIN 5 MILES)

243,879
Population

\$95,635
Median Household Income

225,345
Daytime Population

LOCATION
MAP

CONTACT INFORMATION

RYAN HAMPSON

Senior Associate

ryan.hampson@cushwake.com

+1 952 465 3309

AARON BARNARD, SIOR, CCIM

Senior Director

aaron.barnard@cushwake.com

+1 952 465 3372

3500 American Blvd W | Suite 200
Minneapolis, MN 55431
cushmanwakefield.com



©2024 Cushman & Wakefield. All rights reserved. The information contained in this communication is strictly confidential. This information has been obtained from sources believed to be reliable but has not been verified. NO WARRANTY OR REPRESENTATION, EXPRESS OR IMPLIED, IS MADE AS TO THE CONDITION OF THE PROPERTY (OR PROPERTIES) REFERENCED HEREIN OR AS TO THE ACCURACY OR COMPLETENESS OF THE INFORMATION CONTAINED HEREIN, AND SAME IS SUBMITTED SUBJECT TO ERRORS, OMISSIONS, CHANGE OF PRICE, RENTAL OR OTHER CONDITIONS, WITHDRAWAL WITHOUT NOTICE, AND TO ANY SPECIAL LISTING CONDITIONS IMPOSED BY THE PROPERTY OWNER(S). ANY PROJECTIONS, OPINIONS OR ESTIMATES ARE SUBJECT TO UNCERTAINTY AND DO NOT SIGNIFY CURRENT OR FUTURE PROPERTY PERFORMANCE.