



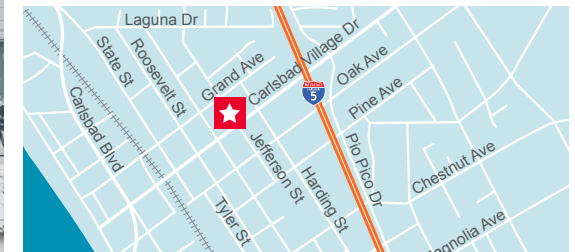
FOR LEASE

# Jefferson Professional Building

2910 Jefferson Street, Carlsbad, CA 92008

## Property Highlights

- 10,904 SF Professional Office Building
- Located in Downtown Carlsbad with very strong population and economic demographics
- Two-story, elevator served building
- On-street and subterranean parking
- Located west of Interstate 5 in the heart of Carlsbad Village
  - Walking distance to the village businesses, restaurants, shops, and the beach



For more information:

**Owen Curry**

+1 760 431 3830

owen.curry@cushwake.com

LIC #01972528

**Peter Curry**

+1 760 431 4238

peter.curry@cushwake.com

LIC #01241186

12830 El Camino Real, Suite 100

San Diego, CA 92130

Tel +1 858 452 6500

**cushmanwakefield.com**

Cushman & Wakefield Copyright 2022. No warranty or representation, express or implied, is made to the accuracy or completeness of the information contained herein, and same is submitted subject to errors, omissions, change of price, rental or other conditions, withdrawal without notice, and to any special listing conditions imposed by the property owner(s). As applicable, we make no representation as to the condition of the property (or properties) in question.



**CUSHMAN &  
WAKEFIELD**

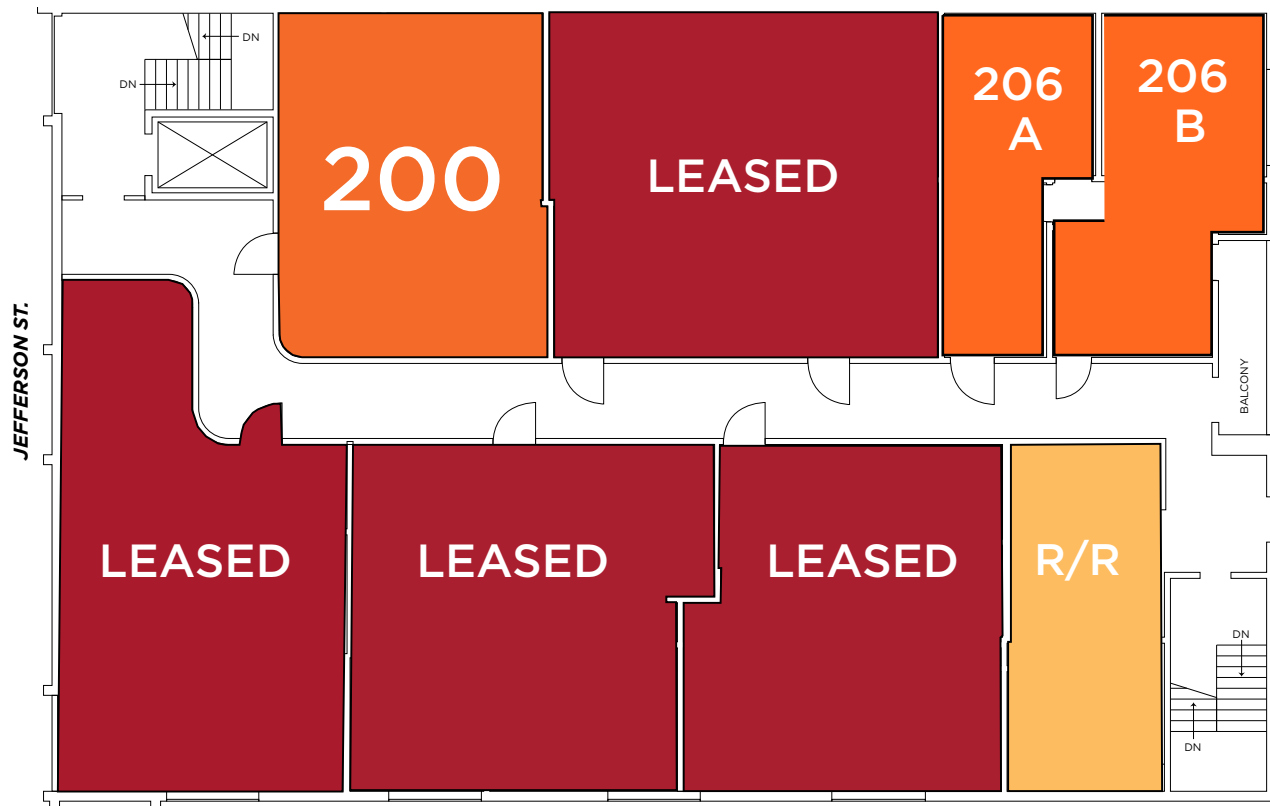
FOR LEASE

# Jefferson Professional Building

2910 Jefferson Street, Carlsbad, CA 92008

Suite	Size (RSF)	Price	Date Available	Comments
200	816 - 1,031	\$3.85/RSF	Now	2 Private Offices, Reception Area, Storage Room, Kitchen with Dishwasher, Private Bathroom with shower
206 A	500*	\$1,875 FS	Now	Private Office, Conference Room
206 B	504*	\$2,475 FS	Now	Private Office, Reception Area, Sink & Drain, Access to Shared Balcony

\*206 A and 206 B can be combined for 1,004 RSF



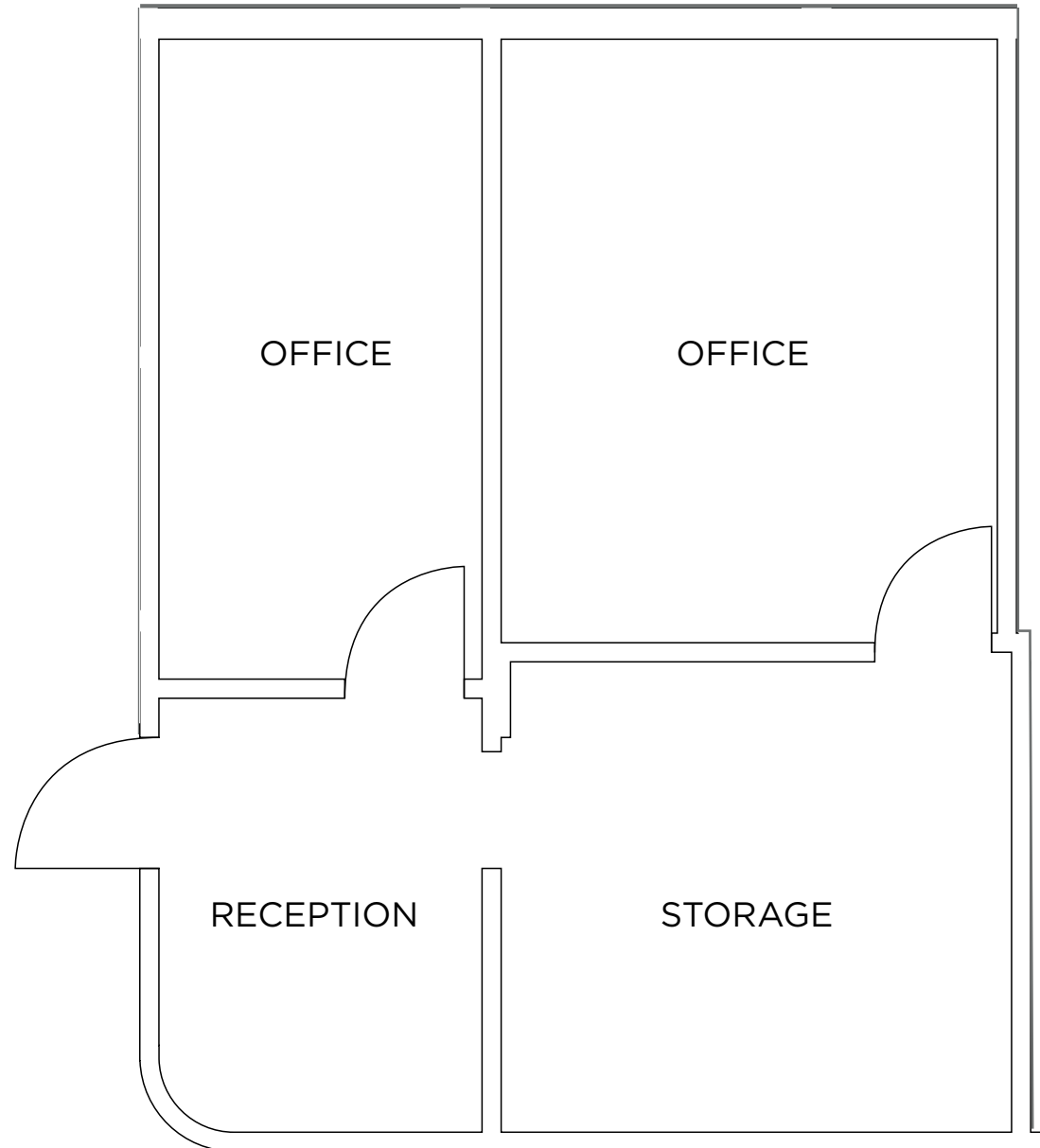
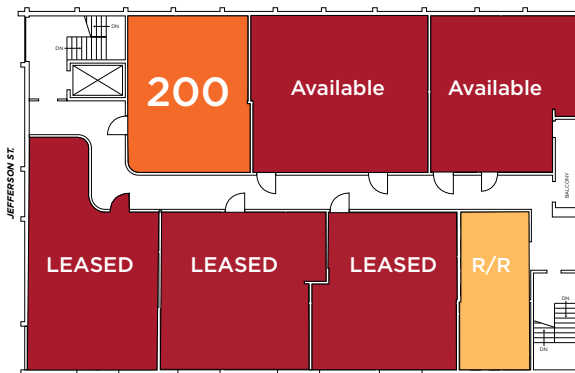
# Jefferson Professional Building

2910 Jefferson Street, Carlsbad, CA 92008

## Suite 200 (816 - 1,031 RSF)

Available Now

- 2 Private Offices
- Reception Area
- Storage Room
- Kitchen with Dishwasher
- Private bathroom with shower





FOR LEASE

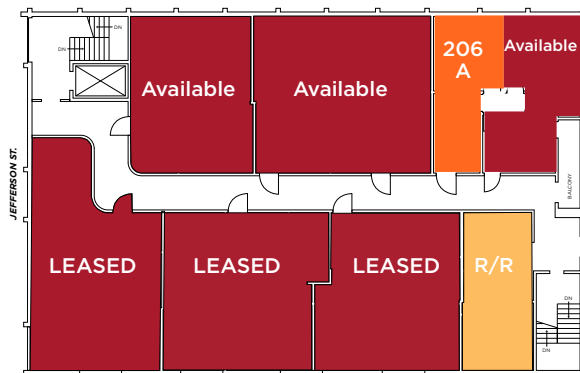
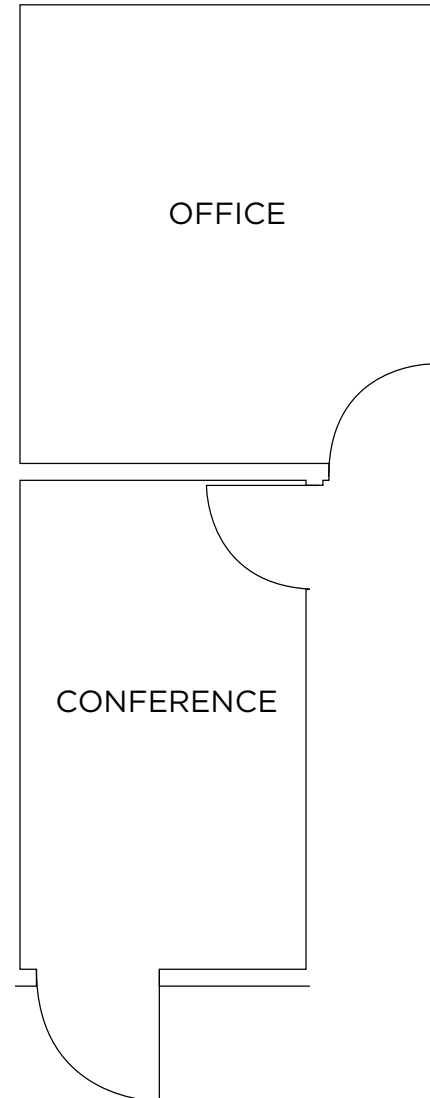
# Jefferson Professional Building

2910 Jefferson Street, Carlsbad, CA 92008

## Suite 206 A (500 RSF)

Available Now

- 2 Private Offices





FOR LEASE

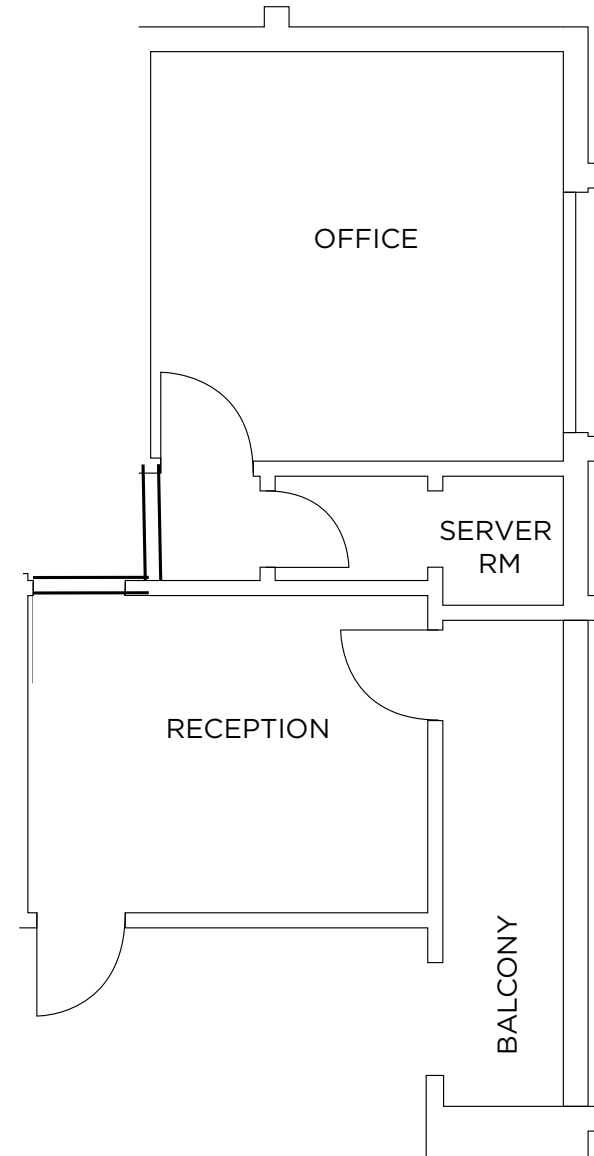
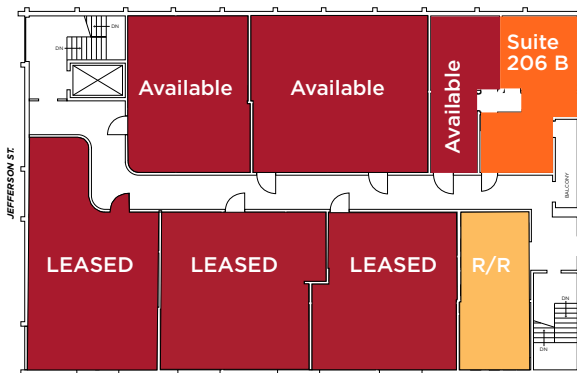
# Jefferson Professional Building

2910 Jefferson Street, Carlsbad, CA 92008

## Suite 206 B (504 RSF)

Available Now

- Private Office
- Reception Area
- Sink & Drain
- Access to Shared Balcony





FOR LEASE

# Jefferson Professional Building

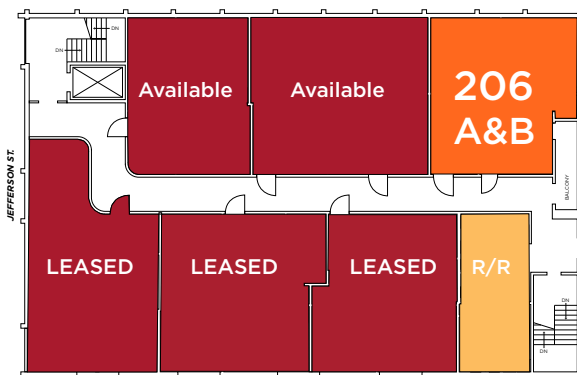
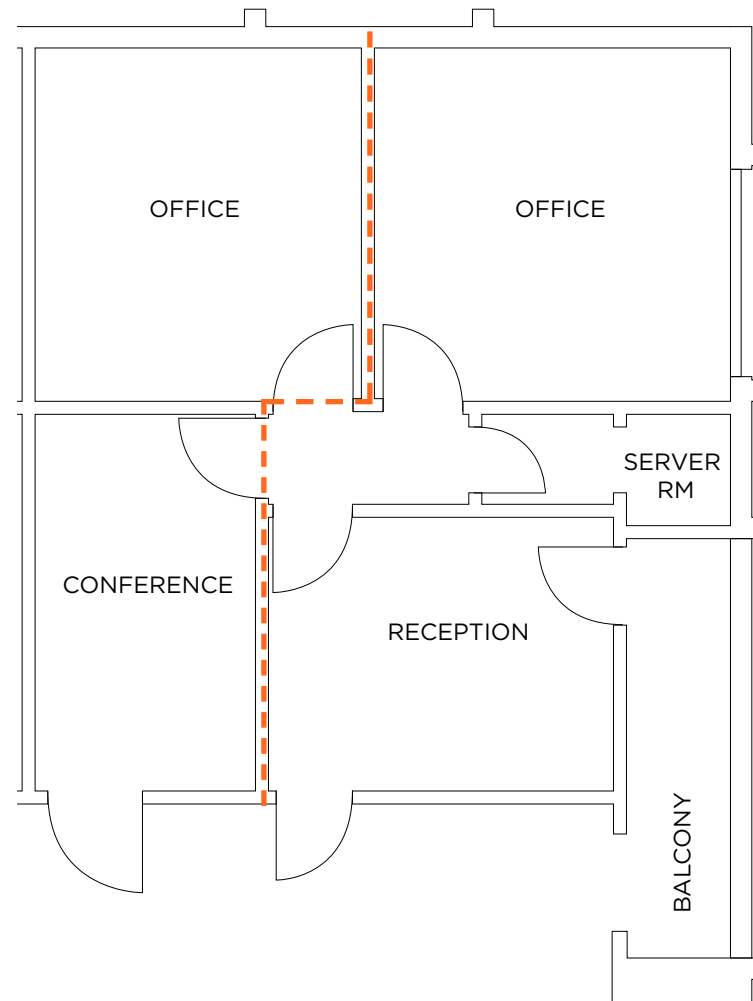
2910 Jefferson Street, Carlsbad, CA 92008

## Suite 206 A & B (1,004 RSF)

Demisable to 500 RSF

Available Now

- 2 Private Offices
- Conference Room
- Reception Area
- Sink & Drain
- Small Kitchenette







FOR LEASE

# Jefferson Professional Building

2910 Jefferson Street, Carlsbad, CA 92008





# Jefferson Professional Building

2910 Jefferson Street, Carlsbad, CA 92008

## AMENITIES AERIAL

