

1190 SARATOGA AVENUE

±4,330 - ±18,943 SF FOR LEASE

FURNISHED OFFICE & LABS

YOUR NAME HERE

Retirement
CAPITAL STRATEGIES

STEVE PACE
408.482.7037
steve.pace@cushwake.com
LIC #00817396

DAN HOLLINGSWORTH
408.615.3431
dan.hollingsworth@cushwake.com
LIC #01117716

TIANA DAMPIER
408.436.3680
tiana.dampier@cushwake.com
LIC #02191012


DOLLINGER PROPERTIES
DRE #02116818

 CUSHMAN &
WAKEFIELD

1190 SARATOGA AVENUE

±4,330 SF - ±18,943 SF

AVAILABLE NOW:

SUITE 200 ±9,204 SF

SUITE 210 ±5,409 SF Furnished Office & Labs

SUITE 250 ±4,330 SF

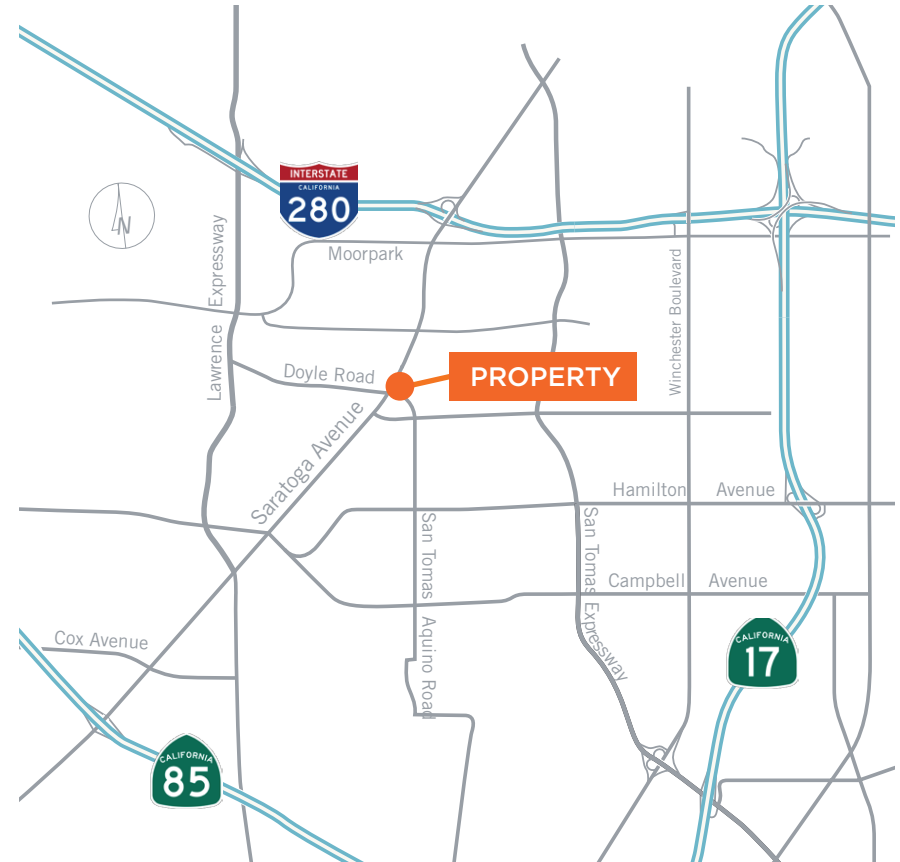
COULD BE COMBINED TO ±18,943 SF

LOCATION HIGHLIGHTS

- Prominent Location with Excellent Identity
- Close Proximity to Restaurants / Hotels / Retail
- Immediate Access to Hwys. 280 & 85
- Conveniently Located Near Cupertino, Campbell & Saratoga

BUILDING HIGHLIGHTS

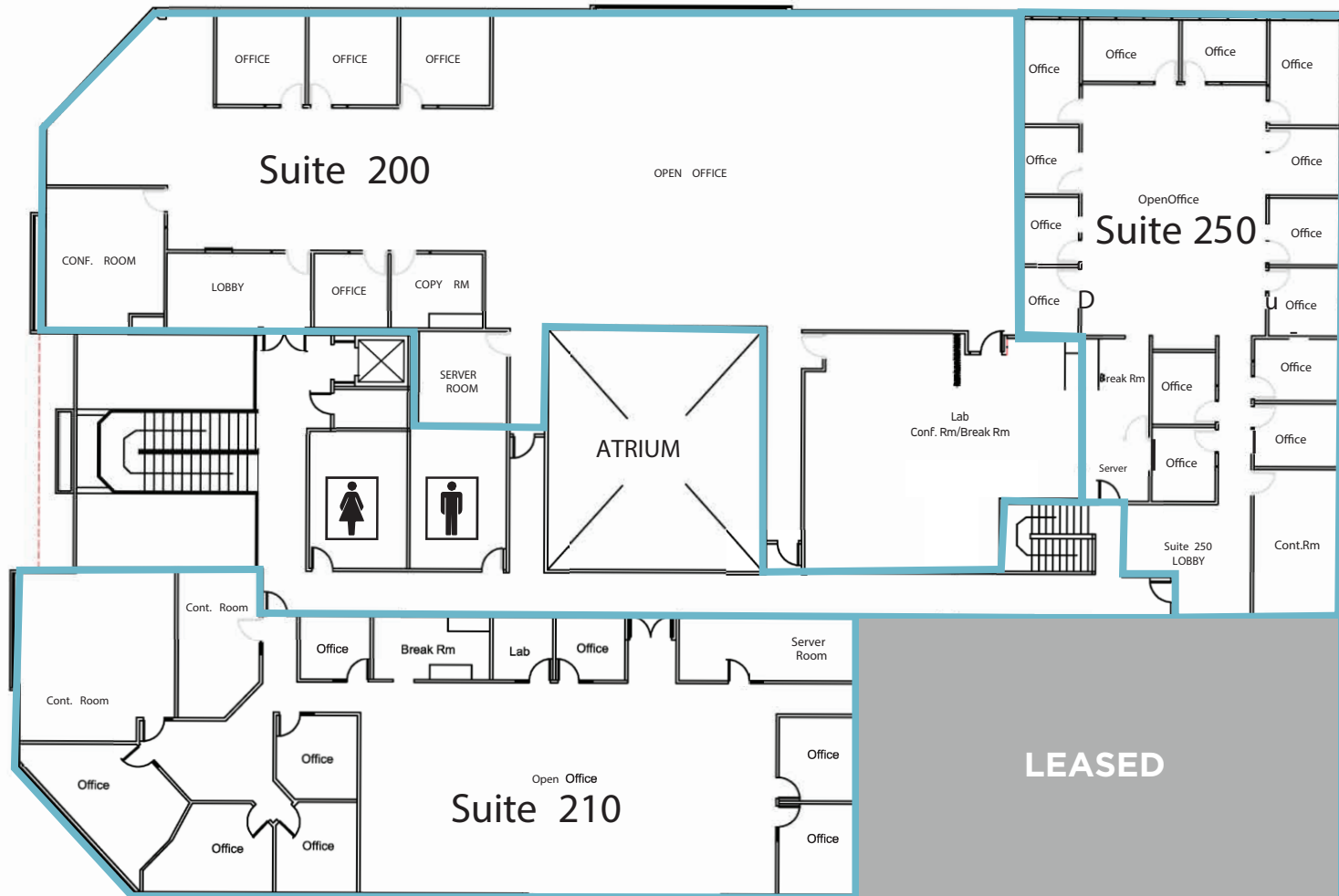
- Furnished Plug & Play
- Expansive Window Line
- Private & Open Offices, Conference Rooms & Labs
- Secure 4/1,000 Parking Directly Under Building
- Charming Atrium in Common Area
- Building Signage for Full Floor Tenant



1190 SARATOGA AVENUE

±4,330 SF - ±18,943 SF

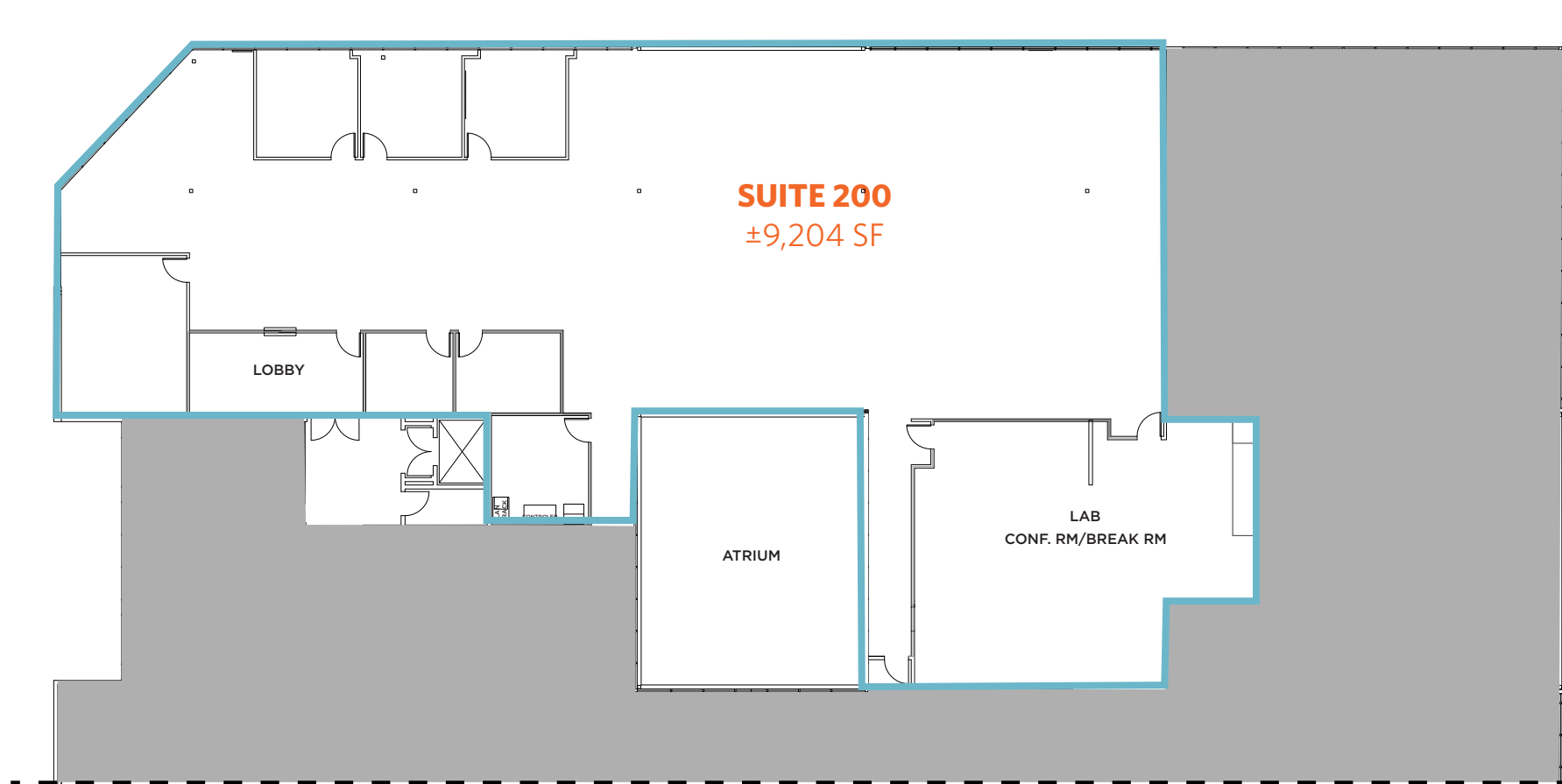
SECOND FLOOR



1190 SARATOGA AVENUE

SUITE 200 | ±9,204 SF

SECOND FLOOR

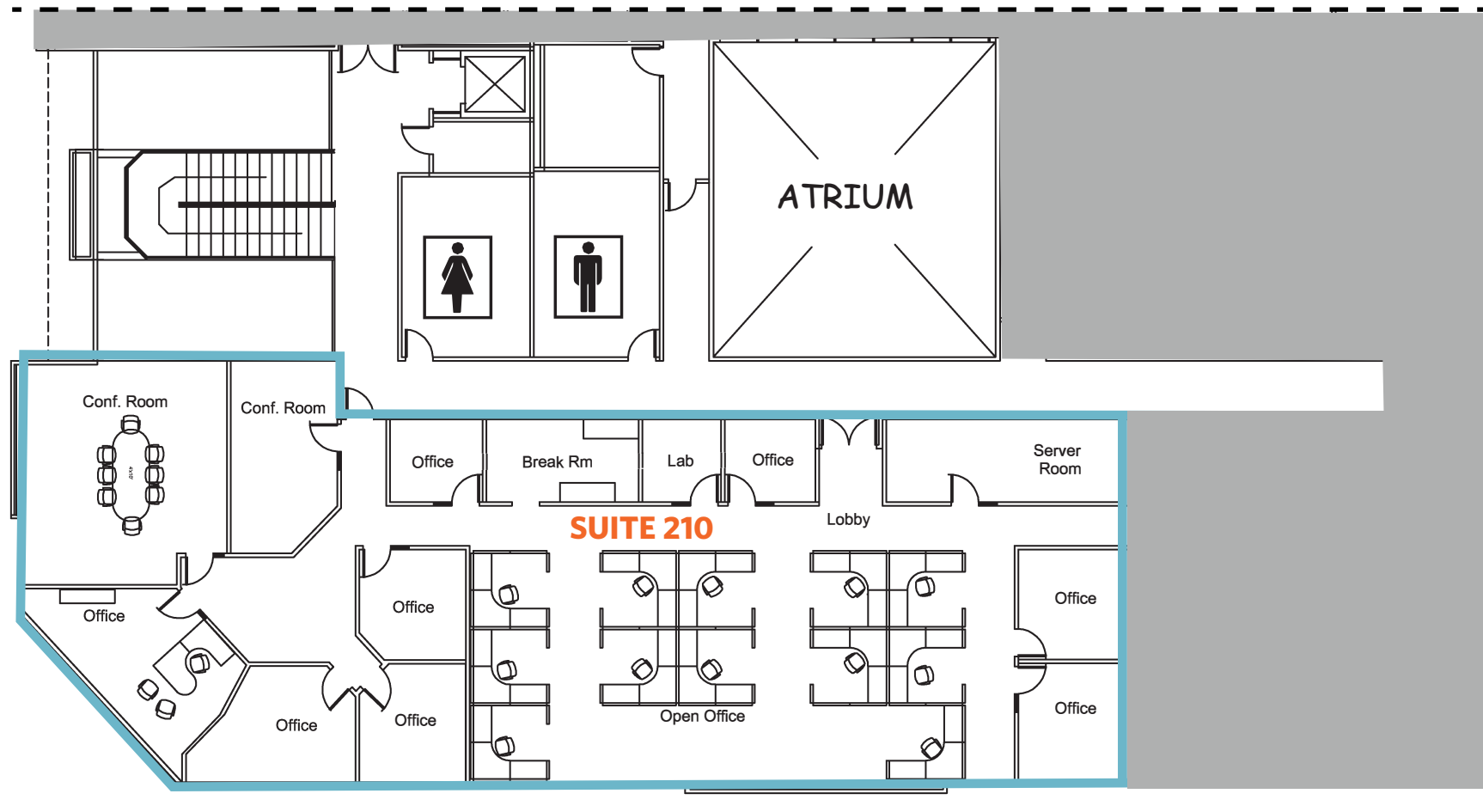


1190 SARATOGA AVENUE

SUITE 210 | ±5,409 SF

SECOND FLOOR

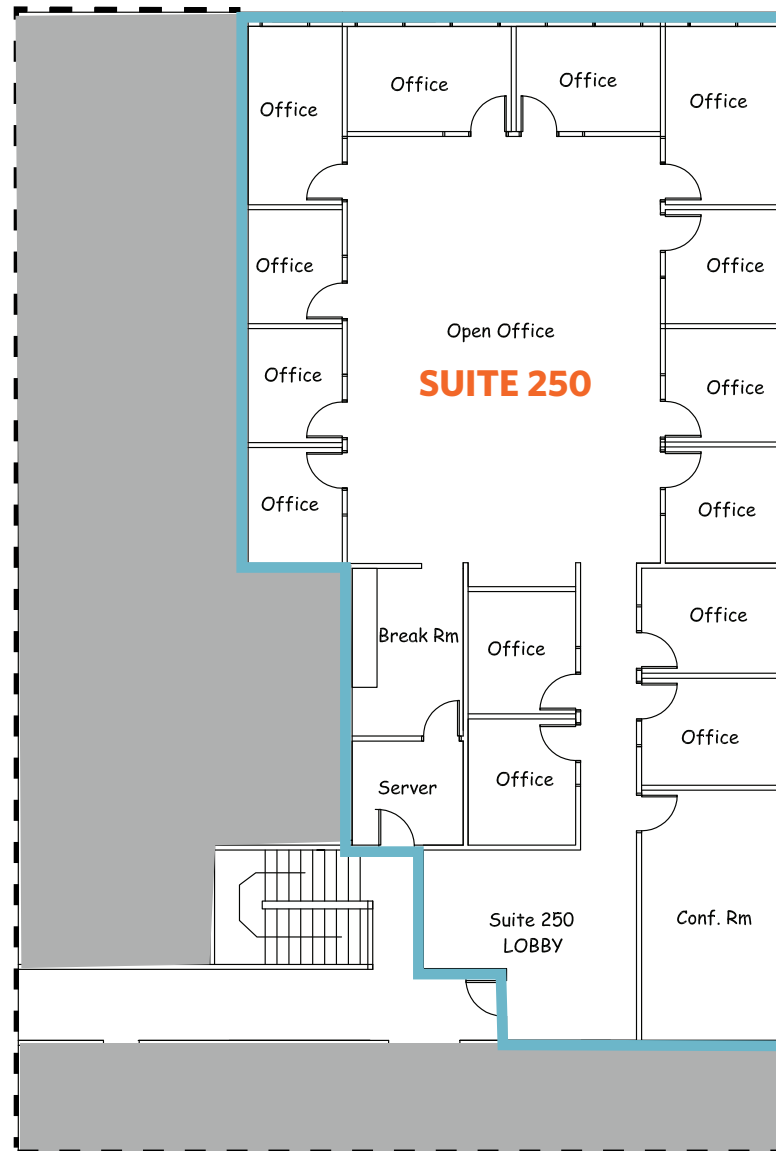
FURNISHED OFFICE & LABS



1190 SARATOGA AVENUE

SUITE 250 | ±4,330 SF

SECOND FLOOR



1190 SARATOGA AVENUE

±4,330 SF - ±18,943 SF

PHOTOS

