

PARK PLAZA

3100 MOWRY AVENUE, FREMONT

±452 SF - ±2,615 SF OFFICE SPACES FOR LEASE



SCOTT DEVER

Managing Director

+1 408 615 3457

scott.dever@cushwake.com

LIC. 01890552

WALT STEPHENSON

Executive Director

+1 408 615 3458

walt.stephenson@cushwake.com

LIC. 01793438



PARK PLAZA | FREMONT

±452 SF - ±2,615 SF OFFICE SPACES FOR LEASE
AVAILABLE NOW:

SUITE	AVAILABLE SF
408	±452
405	±745
301	±943
305	±955
206	±1,394
201	±1,457
205	±1,639
302	±1,834
102	±1,975
300	±2,214
402/410	±2,385
106	±2,508
103	±2,615

PROPERTY HIGHLIGHTS

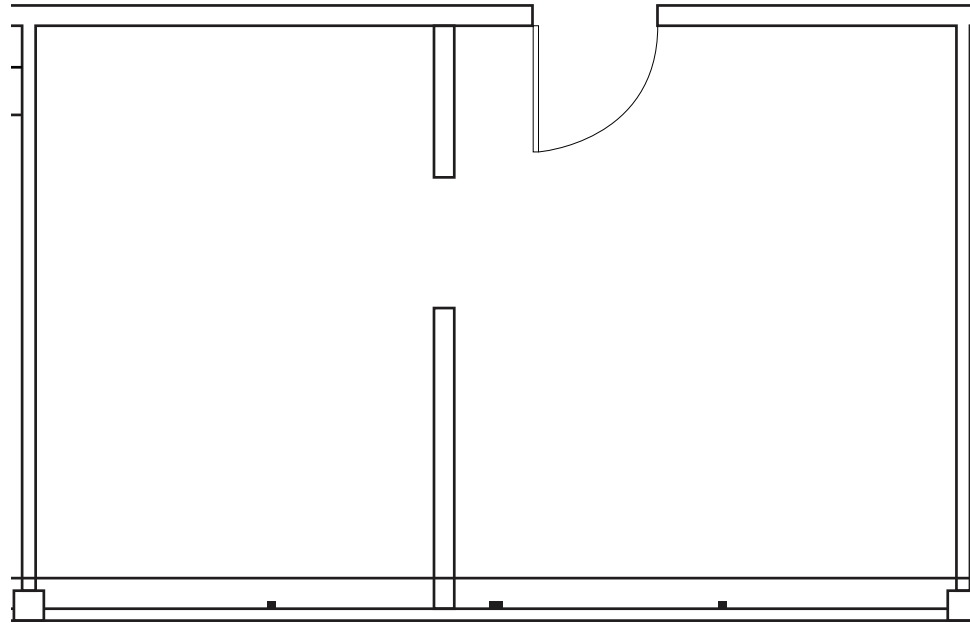
- Highly Visible Building
- 4/1,000 Parking Ratio
- Elevator Served
- Great Downtown Location
- Near BART, Retail & Amenities
- Easy Access to I-880



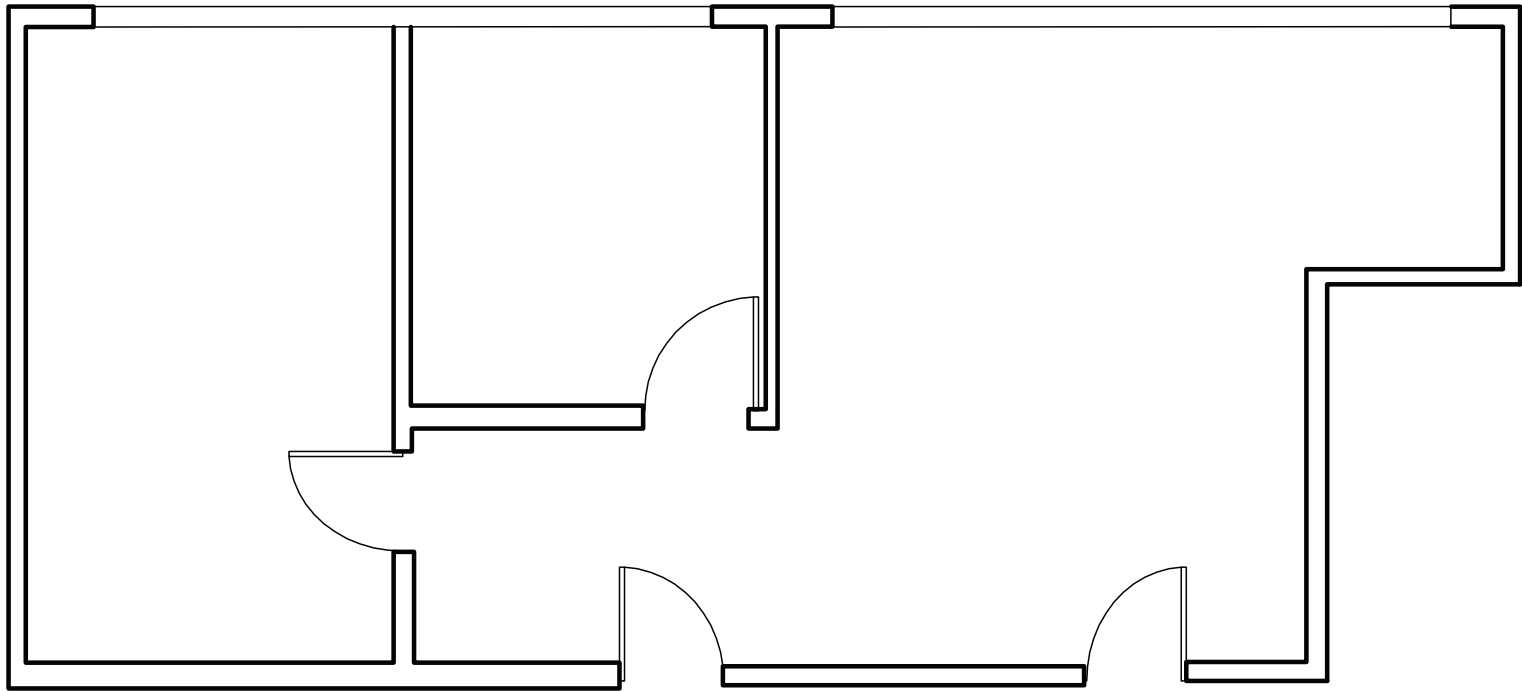
PARK PLAZA | FREMONT

SUITE 408

±452 SF



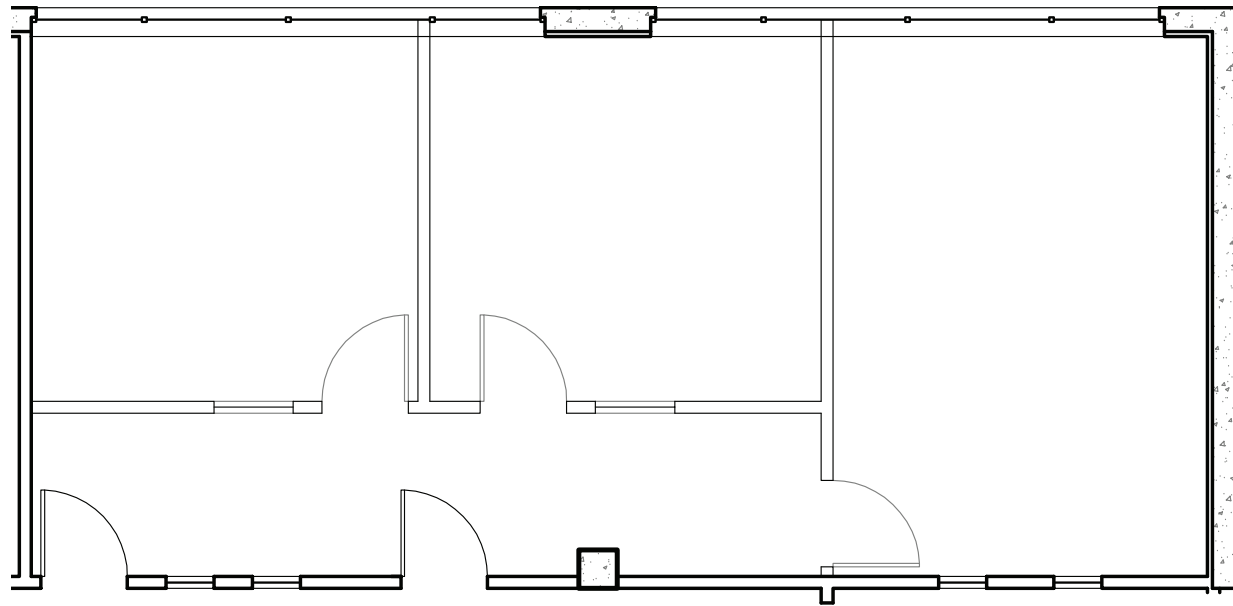
SUITE 405
±745 SF



PARK PLAZA | FREMONT

SUITE 301

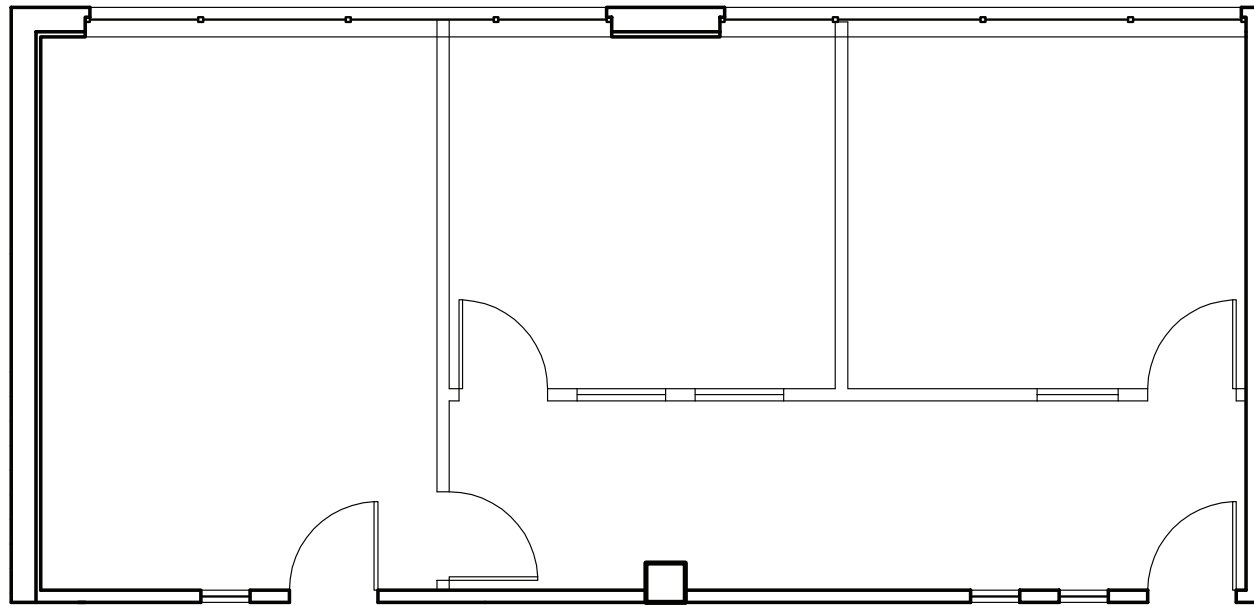
±943 SF



PARK PLAZA | FREMONT

SUITE 305

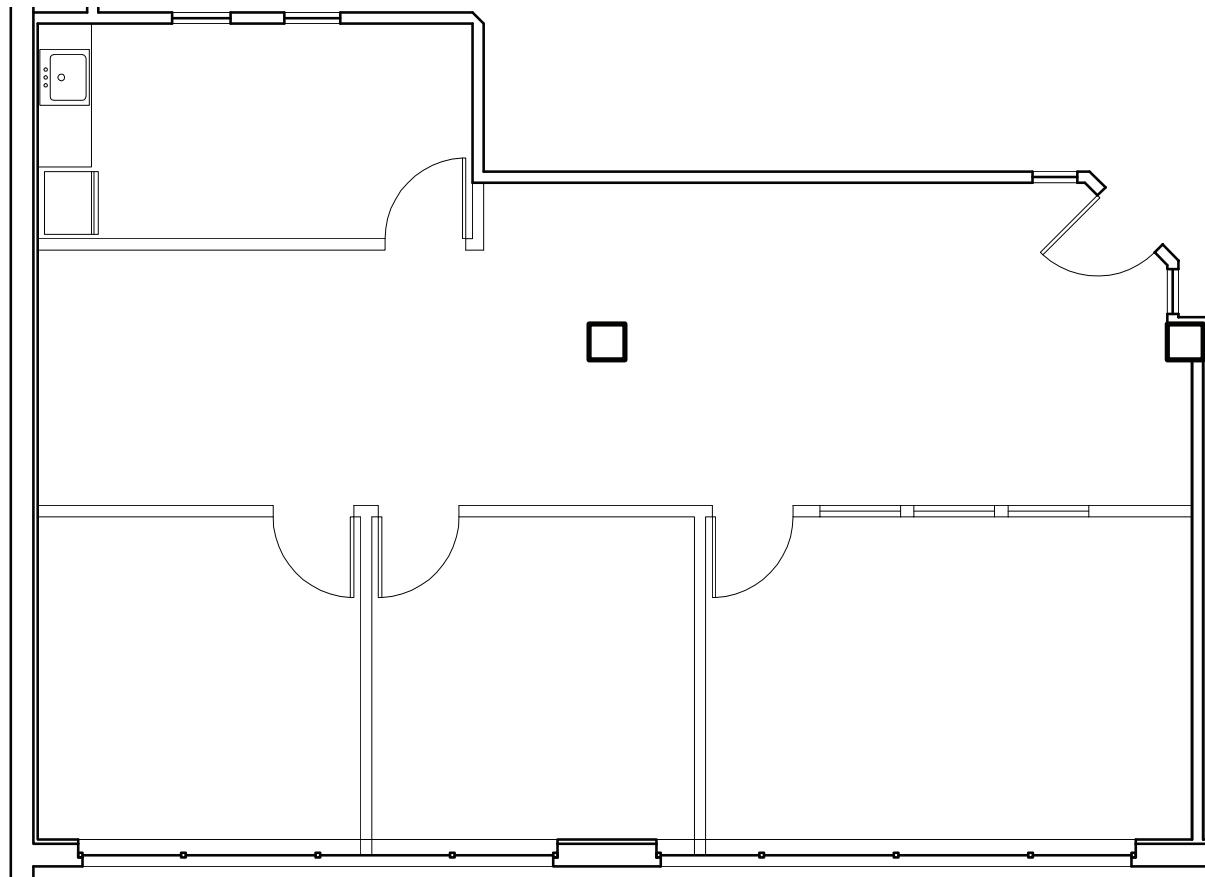
±955 SF



PARK PLAZA | FREMONT

SUITE 206

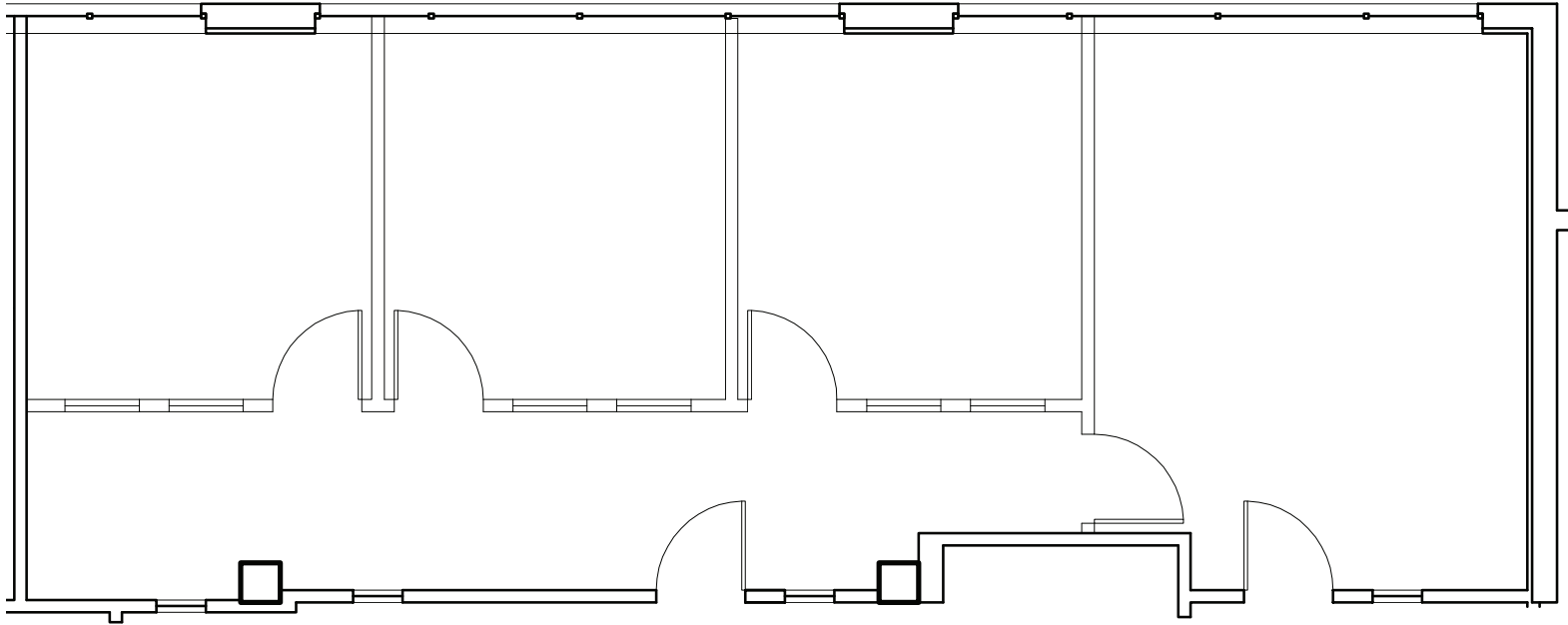
±1,394 SF



PARK PLAZA | FREMONT

SUITE 201

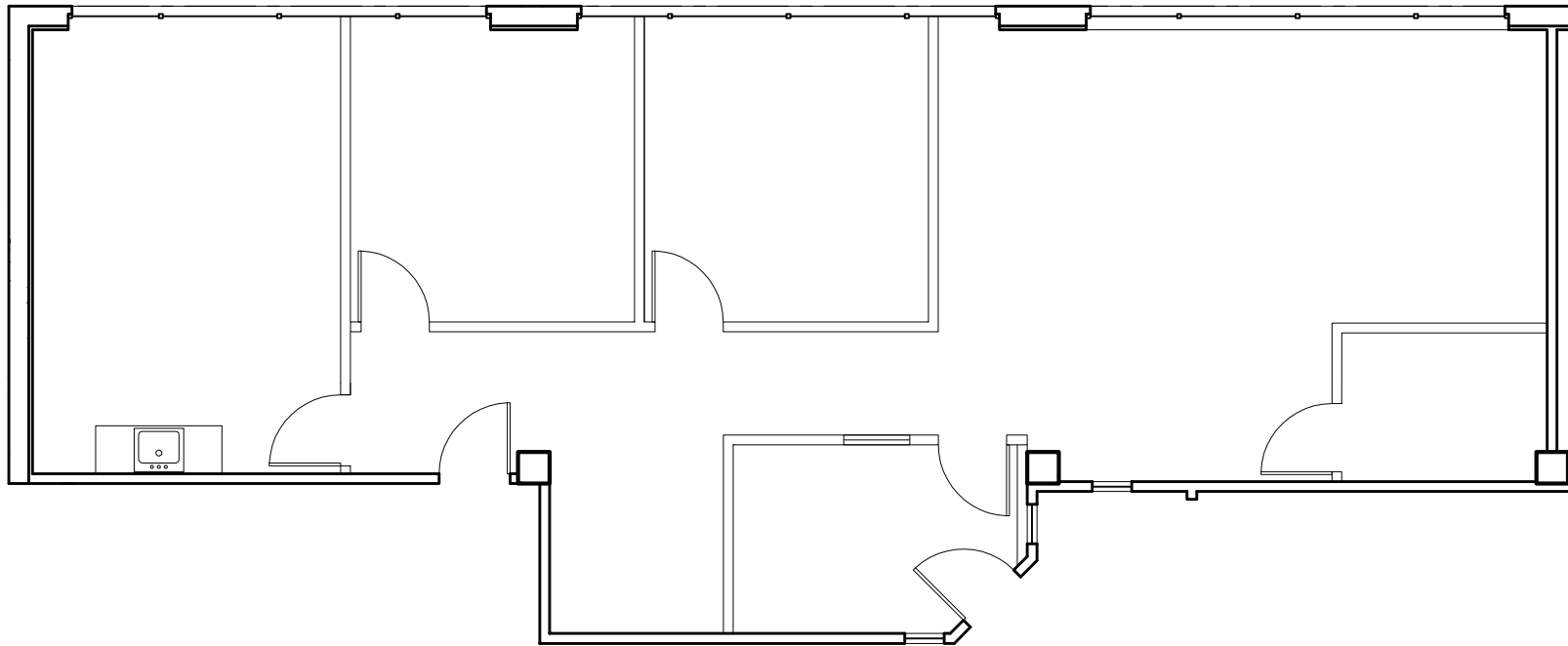
±1,457 SF



PARK PLAZA | FREMONT

SUITE 205

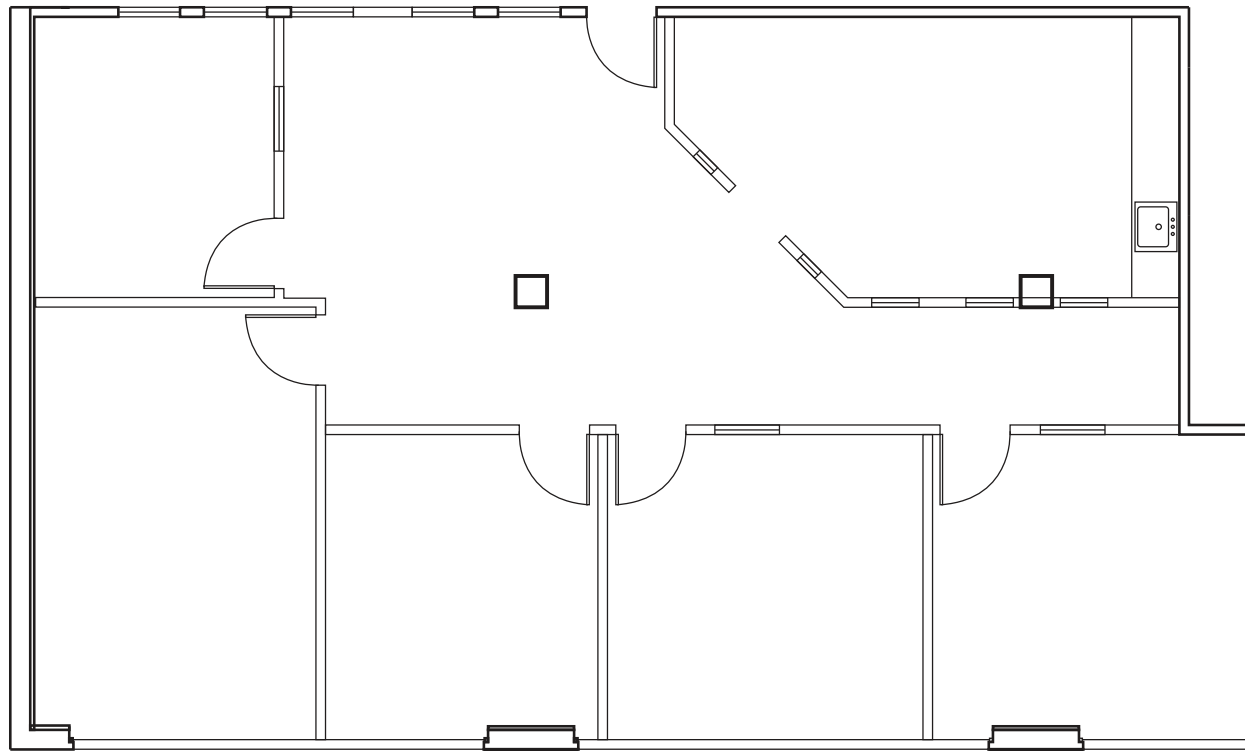
±1,639 SF



PARK PLAZA | FREMONT

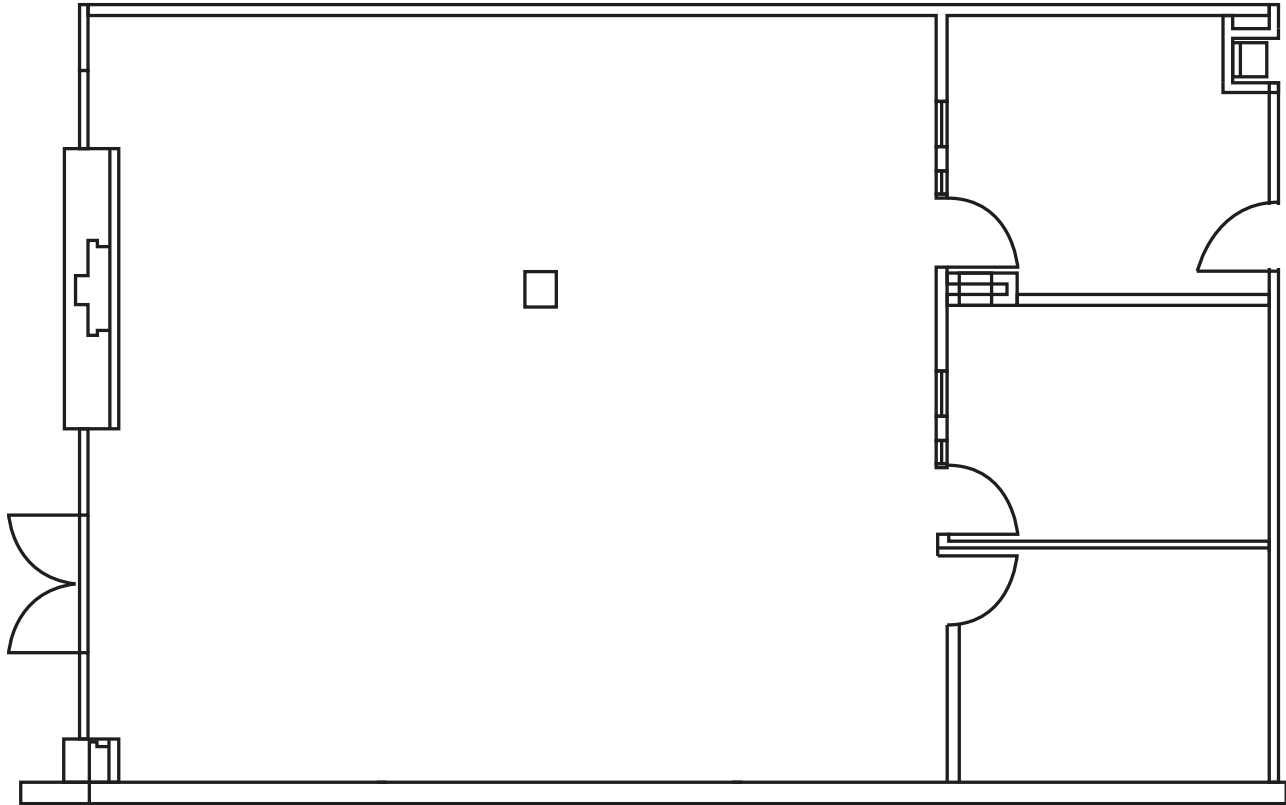
SUITE 302

±1,834 SF



PARK PLAZA | FREMONT

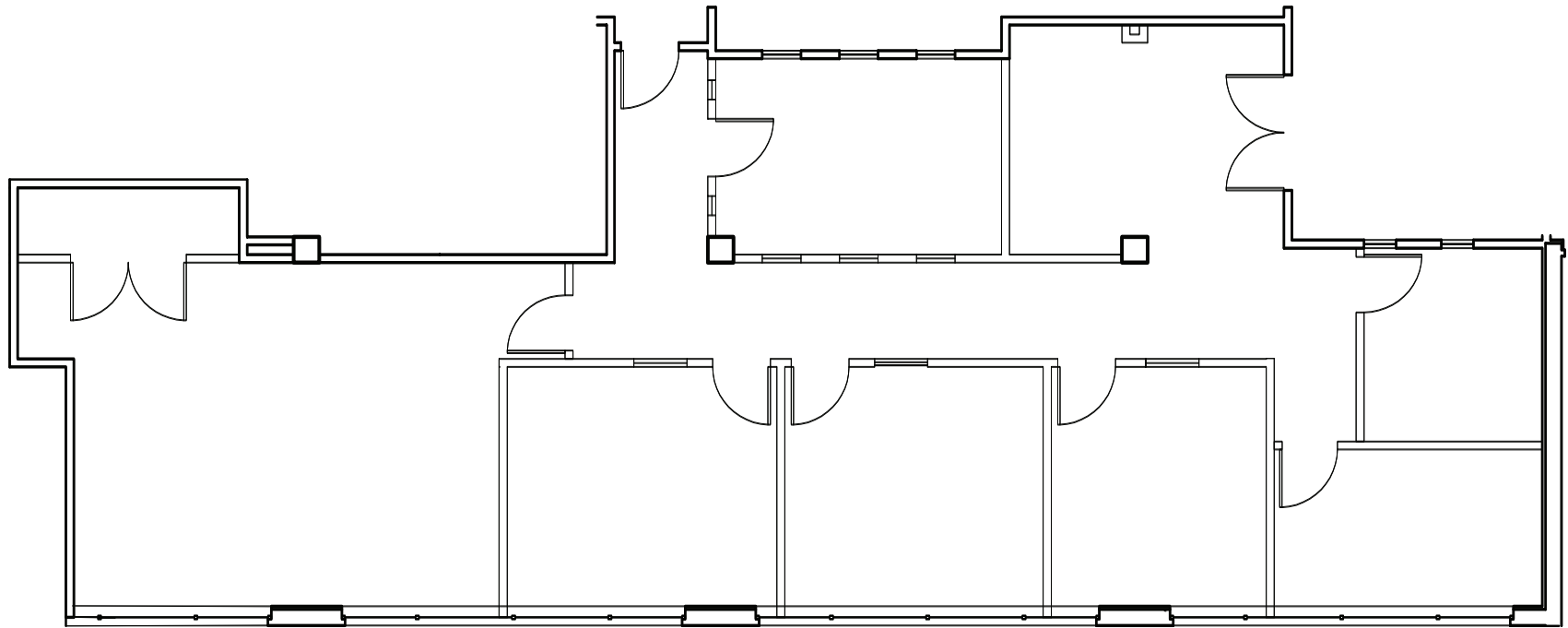
SUITE 102
±1,975 SF



PARK PLAZA | FREMONT

SUITE 300

±2,214 SF

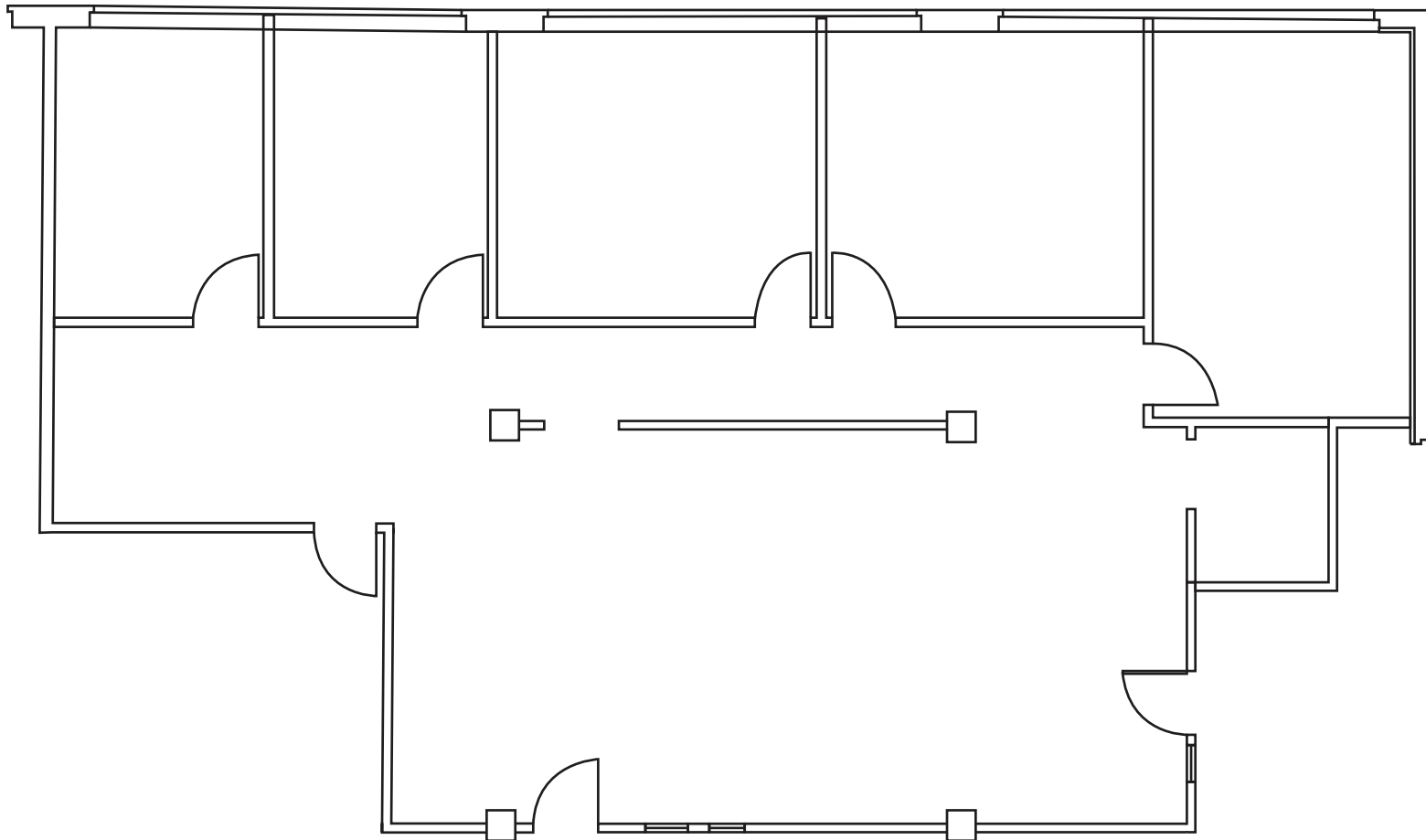


PARK PLAZA | FREMONT

SUITE 402/410

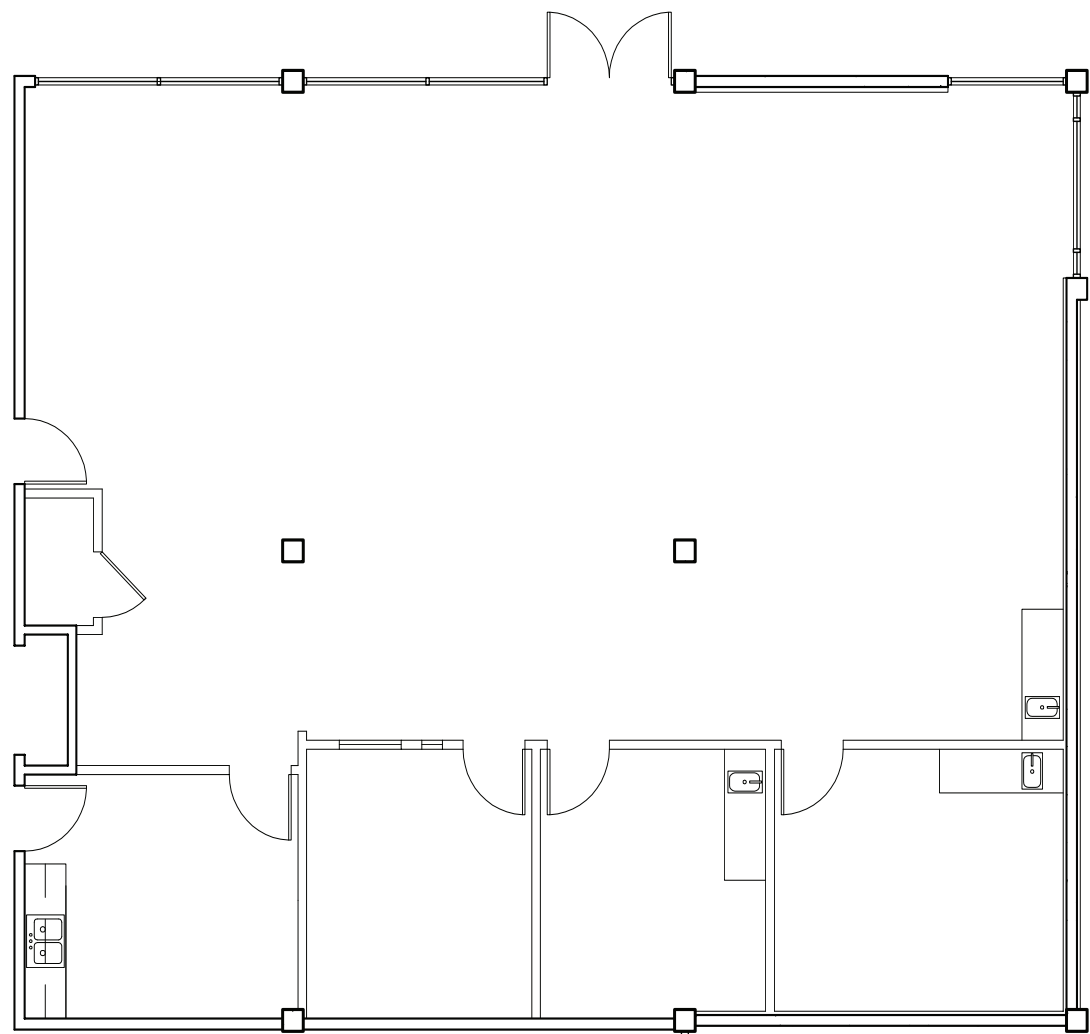
±2,385 SF

DIVISIBLE TO ±1,378 SF & ±1,007 SF



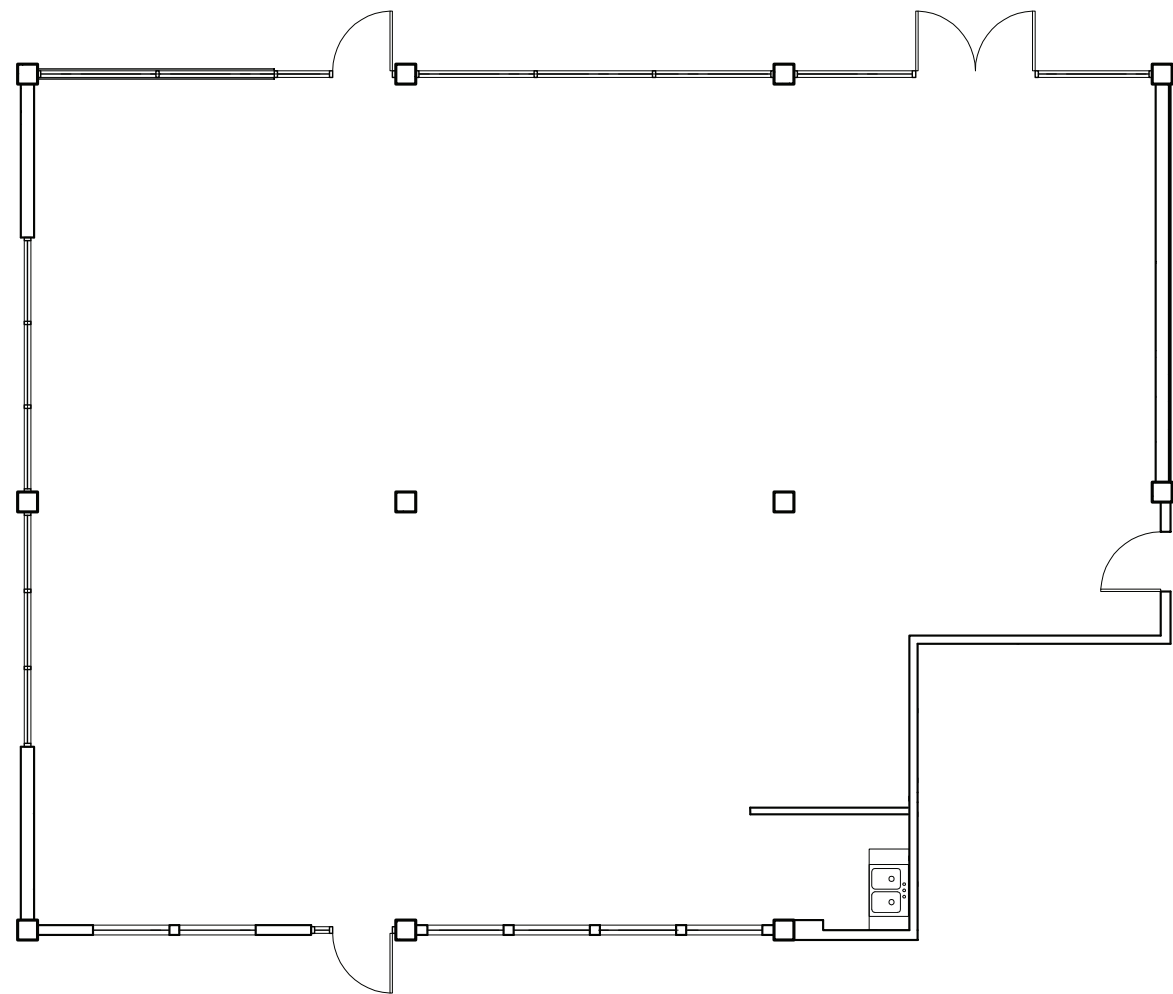
PARK PLAZA | FREMONT

SUITE 106
±2,508 SF



PARK PLAZA | FREMONT

SUITE 103
±2,615 SF



PARK PLAZA | FREMONT



DOWNTOWN LOCATION

Park Plaza is located within walking distance to numerous restaurants, retailers, and many other nearby amenities. Walk-in to BART Station.