

FOR LEASE

8030-9000 Soquel Avenue

Santa Cruz, CA 95062



PROPERTY HIGHLIGHTS

- Available Office Suites in Premiere Mid County Location
- Located at Highway 1 and 41st Ave Interchange with Prominent Visibility from Freeway
- Ample Parking @ 4/1000 SF
- Close to 41st Ave - retail hub of Santa Cruz County
- Close to the County's best shopping, restaurants, and other services

9000 Soquel Ave - Available Suites

- Suite 101-A: ±1,735 RSF
- Suite 102: ±1,373 RSF
- Suite 200: ±1,879 RSF
- Asking rent : \$1.75 PSF + NNN (±\$0.84 PSF)
- Available Now!



NICK GREENUP

Senior Associate
+1 831 647 2106
nicholas.greenup@cushwake.com
LIC #02143358



CUSHMAN &
WAKEFIELD

cushmanwakefield.com

8030-9000 Soquel Avenue

Santa Cruz, CA 95062

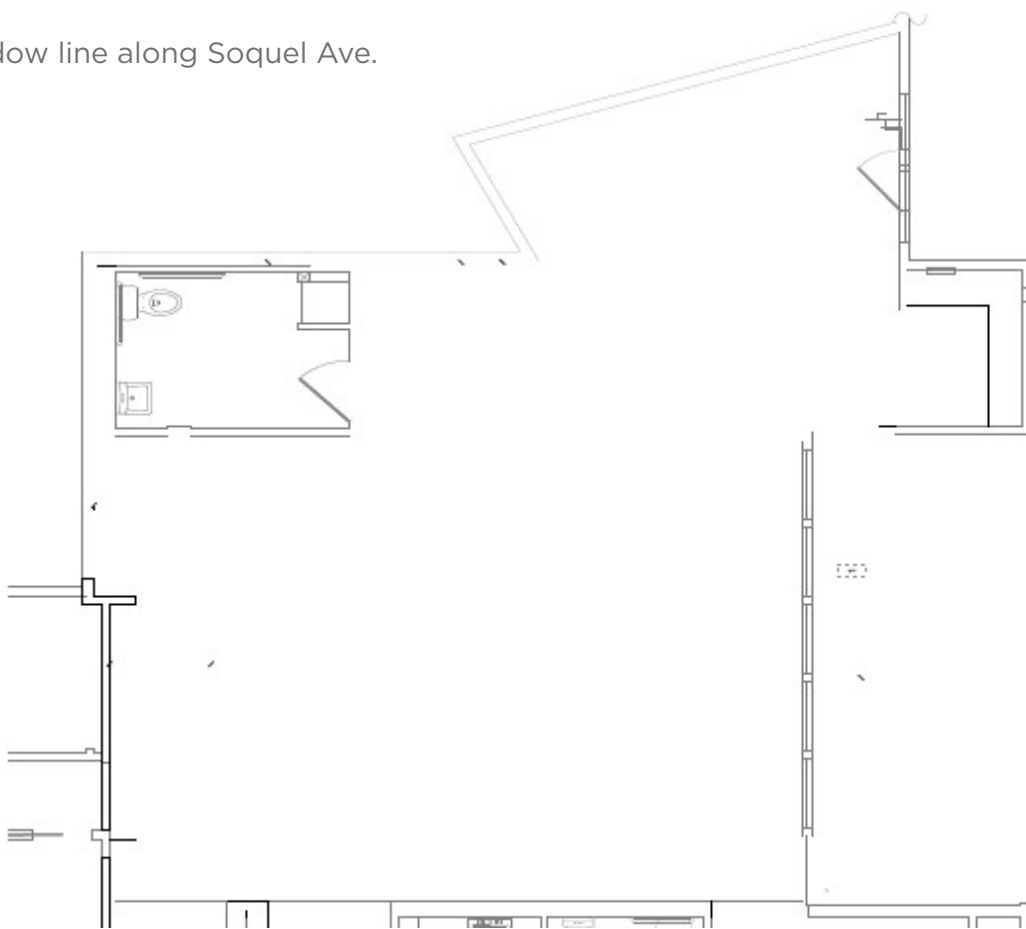
31,735 RSF

FOR LEASE

SUITE: 101-A

SPACE HIGHLIGHTS

- Suite in shell condition currently
- In-Suite restroom
- Great window line along Soquel Ave.



**CUSHMAN &
WAKEFIELD**

cushmanwakefield.com

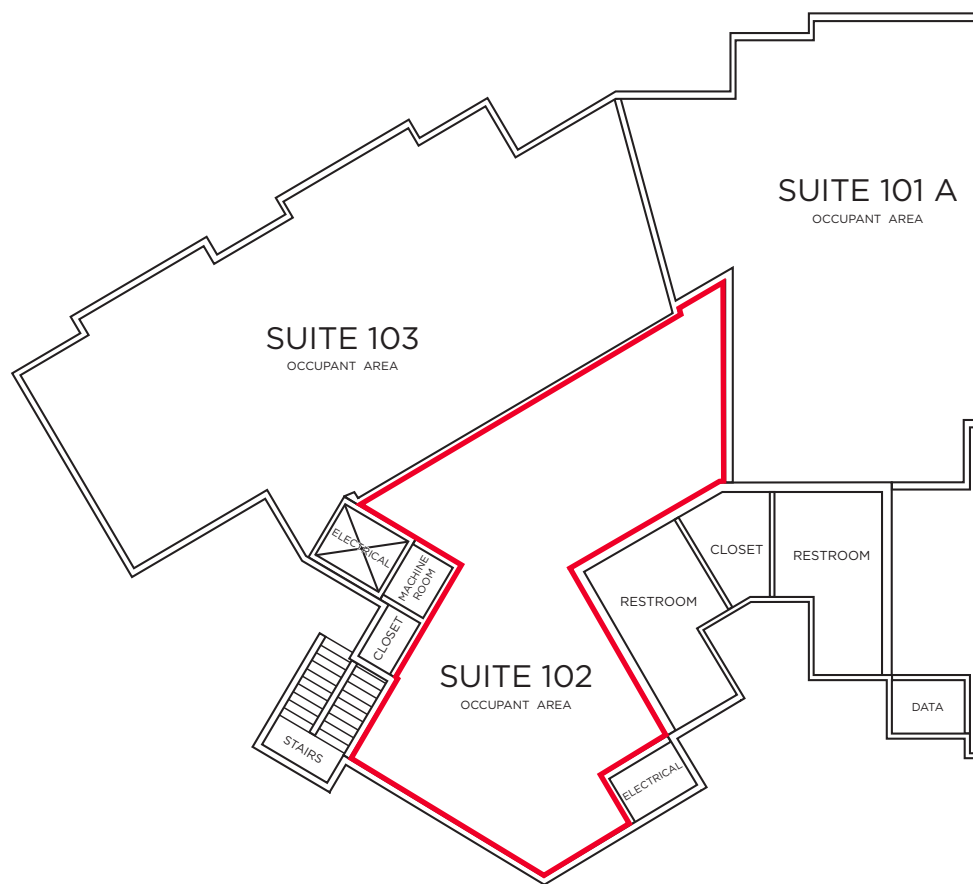
8030-9000 Soquel Avenue

Santa Cruz, CA 95062

31,735 RSF

FOR LEASE

SUITE: 102



SPACE HIGHLIGHTS

- 3 private offices
- Reception/Waiting area.
- Employee break room
- French doors throughout



**CUSHMAN &
WAKEFIELD**

cushmanwakefield.com

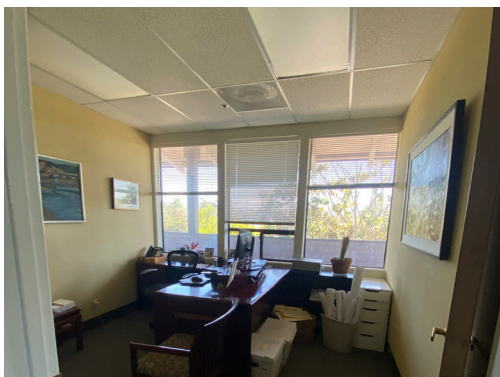
8030-9000 Soquel Avenue

Santa Cruz, CA 95062

31,735 RSF

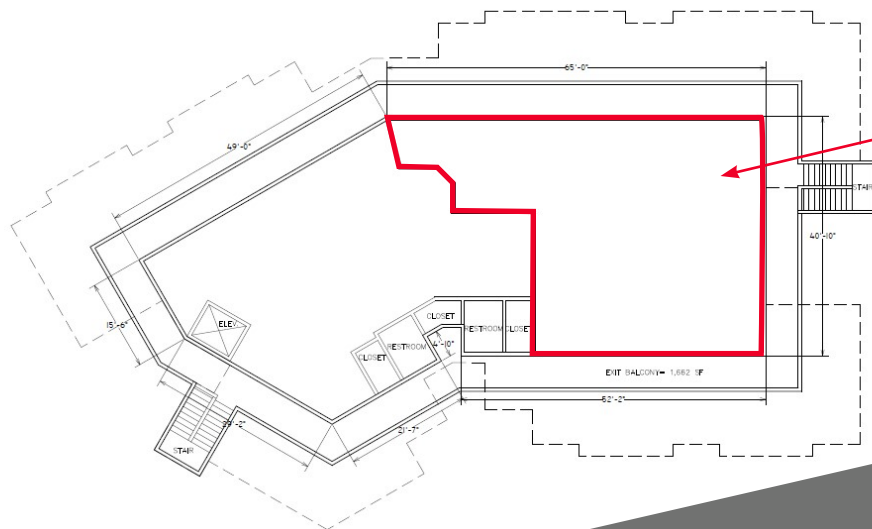
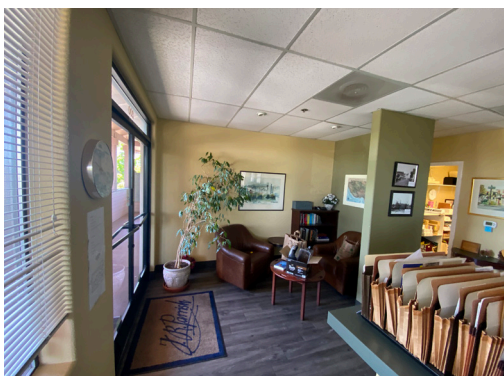
FOR LEASE

SUITE: 200



SPACE HIGHLIGHTS

- Built out reception area
- Kitchenette
- Conference room
- 5 private offices



Suite 200 Available Now



**CUSHMAN &
WAKEFIELD**

cushmanwakefield.com

8030-9000 Soquel Avenue

Santa Cruz, CA 93962

FOR LEASE

31,735 RSF

AERIAL



**CUSHMAN &
WAKEFIELD**

cushmanwakefield.com

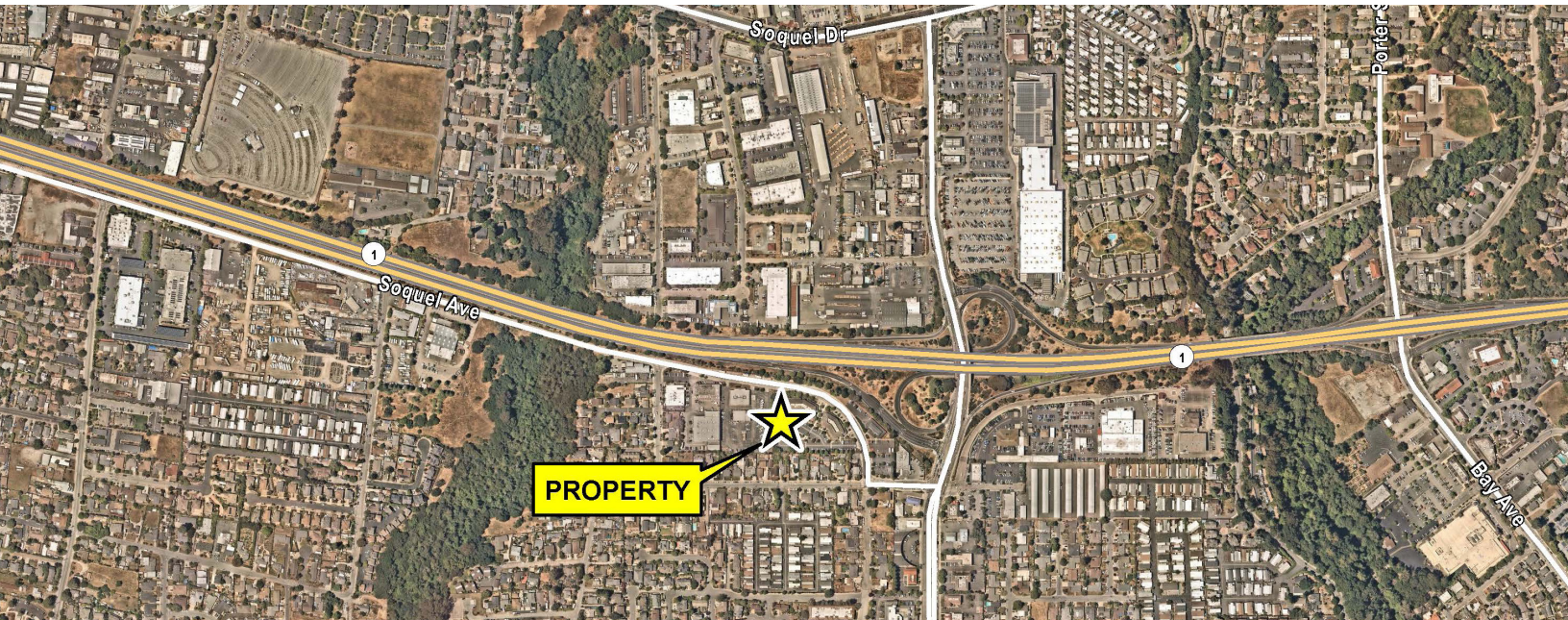
©2025 Cushman & Wakefield. All rights reserved. The information contained in this communication is strictly confidential. This information has been obtained from sources believed to be reliable but has not been verified. No warranty or representation, express or implied, is made as to the condition of the property (or properties) referenced herein or as to the accuracy or completeness of the information contained herein, and same is submitted subject to errors, omissions, change of price, rental or other conditions, withdrawal without notice, and to any special listing conditions imposed by the property owner(s). Any projections, opinions or estimates are subject to uncertainty and do not signify current or future property performance.

80309000 Soquel Avenue

Santa Cruz, CA 95062

31,735 RSF

FOR LEASE



DEMOGRAPHICS

	1 Mile	3 Mile
Estimated Population (2023)	18,124	70,300
Projected Population (2028)	17,951	69,550
Estimated Households (2023)	7,573	29,457
Projected Households (2028)	7,554	29,294
Est. Avg. Household Income (2023)	\$131,366	\$147,447
Projected Avg. Household Income (2028)	\$150,657	\$169,564
Est. Median Household Income (2021)	\$96,217	\$96,376
Projected Median Household Income (2026)	\$107,851	\$113,226
Median Age (2023)	40.8 Years	41.7 Years



**CUSHMAN &
WAKEFIELD**

cushmanwakefield.com