



**GENEROUS T.I. ALLOWANCE AVAILABLE**



# AIRPORT PLAZA OFFICE SPACES

3295 West Elder Street  
Boise, Idaho 83705

**1,022 TO 11,982 SF**

## PROPERTY HIGHLIGHTS

Available	1,022 to 11,982 SF
Basement Rate	\$18.00/SF
Built-Out Rate	\$18.00/SF
Custom Build-Out	\$23.00/SF
Lease Type	Full Service Excl. Janitorial
T.I. Allowance	Negotiable, Contact Agents
Building Size	43,308 SF Total
Zoning	City-of-Boise L-OD
LockBox	No, Please Schedule Tours



### BREE WELLS

Director  
Office | Capital Markets  
+1 208 287 9492  
[bree.wells@cushwake.com](mailto:bree.wells@cushwake.com)

### BRAYDON TORRES

Associate  
Office | Capital Markets  
+1 208 207 9485  
[braydon.torres@cushwake.com](mailto:braydon.torres@cushwake.com)

### JENNIFER MCENTEE

Senior Director  
Office | Capital Markets  
+1 208 287 9495  
[jennifer.mcentee@cushwake.com](mailto:jennifer.mcentee@cushwake.com)

999 WEST MAIN STREET, STE 1300  
BOISE, IDAHO 83702  
MAIN +1 208 287 9500  
FAX +1 208 287 9501  
[CUSHMANWAKEFIELD.COM](http://CUSHMANWAKEFIELD.COM)

©2024 Cushman & Wakefield. All rights reserved. The information contained in this communication is strictly confidential. This information has been obtained from sources believed to be reliable but has not been verified. No warranty or representation, express or implied, is made as to the condition of the property (or properties) referenced herein or as to the accuracy or completeness of the information contained herein, and same is submitted subject to errors, omissions, change of price, rental or other conditions, withdrawal without notice, and to any special listing conditions imposed by the property owner(s). Any projections, opinions or estimates are subject to uncertainty and do not signify current or future property performance.





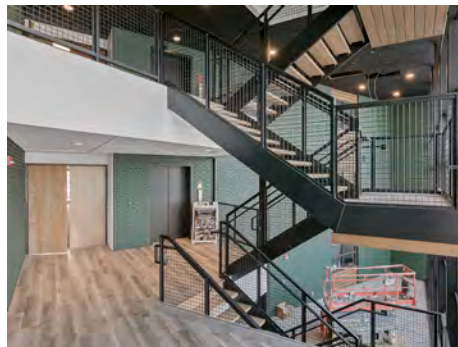
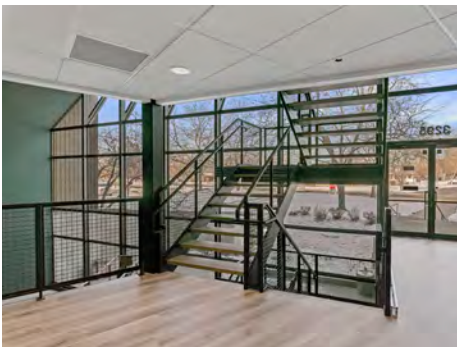
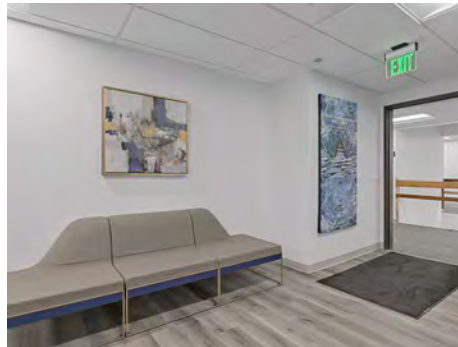
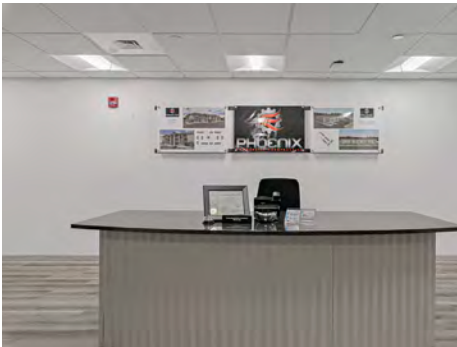
# AIRPORT PLAZA OFFICES

3295 West Elder Street, Boise, Idaho 83705

1,022 TO 11,982 SF FOR LEASE



**NEW OWNERSHIP - RENOVATIONS COMPLETED - CUSTOM SPACE DESIGNING**



**GREAT LOCATION, GENEROUS T.I.'S - CUSTOMIZE YOUR OWN OFFICE SUITES**

- Multi-tenant office building suites available near the airport in southeast Boise with easy access to downtown
- Full remodel completed, including both interior and exterior. Enjoy brand new common areas, stunning interior finishes, and beautiful updated exterior landscaping. This building includes spaces in built-out condition, as well as some spaces ready for new tenants desired improvements. This building is ideal for all tenants looking for space whether that is a tenant looking for move in ready space or looking to design their perfect space.
- Building includes common area entry, restrooms, breakroom/eating area, elevator access, and ample on-site parking
- Freeway exposure along Interstate 84 west of Vista Avenue interchange I-84 exit 53 - 5 minutes from the airport - [Google 360 View](#)
- Surrounding businesses & services include Applebee's, Willow Creek, Kopper Kitchen, Denny's, WH Pacific, & Wells Fargo
- Contact agents to discuss various uses and layouts, and to schedule a walkthrough today!!





# AIRPORT PLAZA OFFICES

3295 West Elder Street, Boise, Idaho 83705

1,022 TO 11,982 SF FOR LEASE



**REMODEL COMPLETED - RARE OPPORTUNITY FOR CUSTOM BUILD-OUTS**



## BREE WELLS

Director  
Office | Capital Markets  
+1 208 287 9492  
[bree.wells@cushwake.com](mailto:bree.wells@cushwake.com)

## JENNIFER MCENTEE

Senior Director  
Office | Capital Markets  
+1 208 287 9495  
[jennifer.mcentee@cushwake.com](mailto:jennifer.mcentee@cushwake.com)

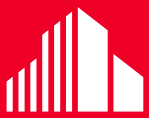
## BRAYDON TORRES

Associate  
Office | Capital Markets  
+1 208 207 9485  
[braydon.torres@cushwake.com](mailto:braydon.torres@cushwake.com)

999 W Main Street, Ste 1300

Boise, Idaho 83702  
Main +1 208 287 9500  
Fax +1 208 287 9501  
[cushmanwakefield.com](http://cushmanwakefield.com)





**CUSHMAN &  
WAKEFIELD**

# AIRPORT PLAZA OFFICES

3295 West Elder Street, Boise, Idaho 83705

1,022 TO 11,982 SF FOR LEASE

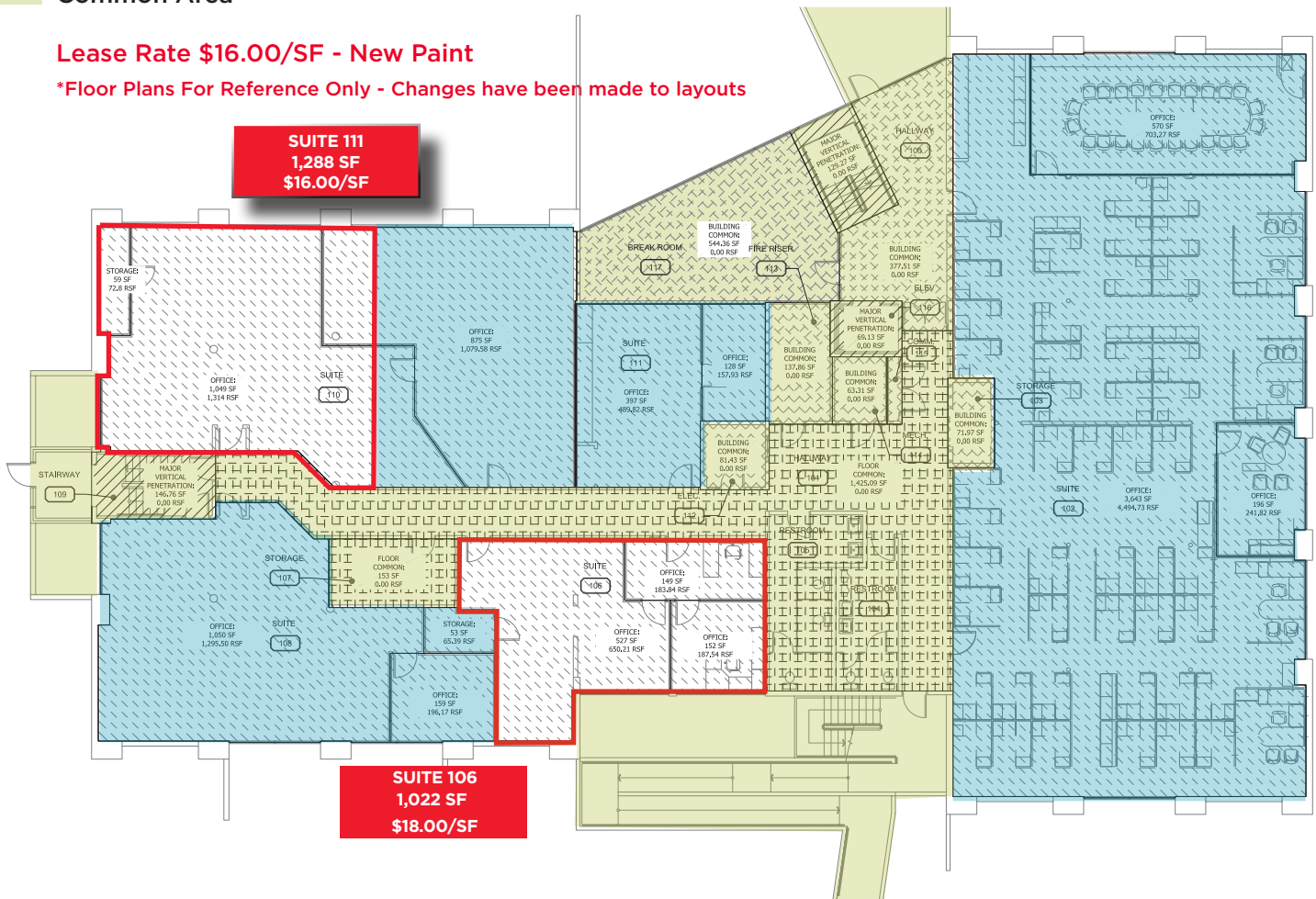


## BASEMENT LEVEL OFFICE SPACES

- Available
- Leased
- Common Area

**Lease Rate \$16.00/SF - New Paint**

**\*Floor Plans For Reference Only - Changes have been made to layouts**



### BREE WELLS

Director  
Office | Capital Markets  
+1 208 287 9492  
bree.wells@cushwake.com

### JENNIFER MCENTEE

Senior Director  
Office | Capital Markets  
+1 208 287 9495  
jennifer.mcentee@cushwake.com

### BRAYDON TORRES

Associate  
Office | Capital Markets  
+1 208 207 9485  
braydon.torres@cushwake.com

999 W Main Street, Ste 1300

Boise, Idaho 83702  
Main +1 208 287 9500  
Fax +1 208 287 9501  
cushmanwakefield.com



**CUSHMAN &  
WAKEFIELD**

# AIRPORT PLAZA OFFICES

3295 West Elder Street, Boise, Idaho 83705

1,022 TO 11,982 SF FOR LEASE



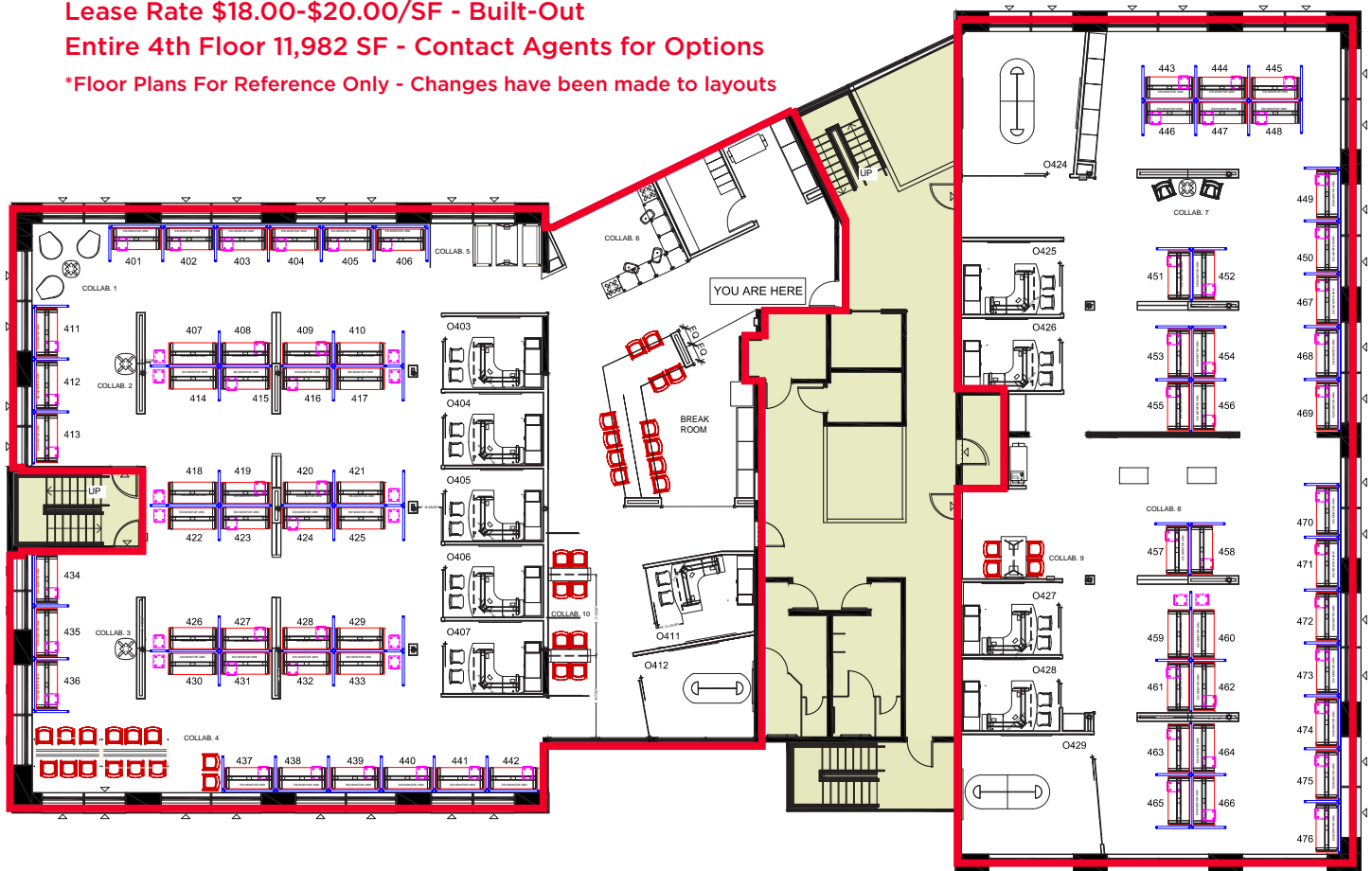
## FOURTH FLOOR OFFICE SPACES

- Available
- Leased
- Common Area

**Lease Rate \$18.00-\$20.00/SF - Built-Out**

**Entire 4th Floor 11,982 SF - Contact Agents for Options**

**\*Floor Plans For Reference Only - Changes have been made to layouts**



### BREE WELLS

Director  
Office | Capital Markets  
+1 208 287 9492  
bree.wells@cushwake.com

### JENNIFER MCENTEE

Senior Director  
Office | Capital Markets  
+1 208 287 9495  
jennifer.mcentee@cushwake.com

### BRAYDON TORRES

Associate  
Office | Capital Markets  
+1 208 207 9485  
braydon.torres@cushwake.com

999 W Main Street, Ste 1300

Boise, Idaho 83702  
Main +1 208 287 9500  
Fax +1 208 287 9501  
cushmanwakefield.com





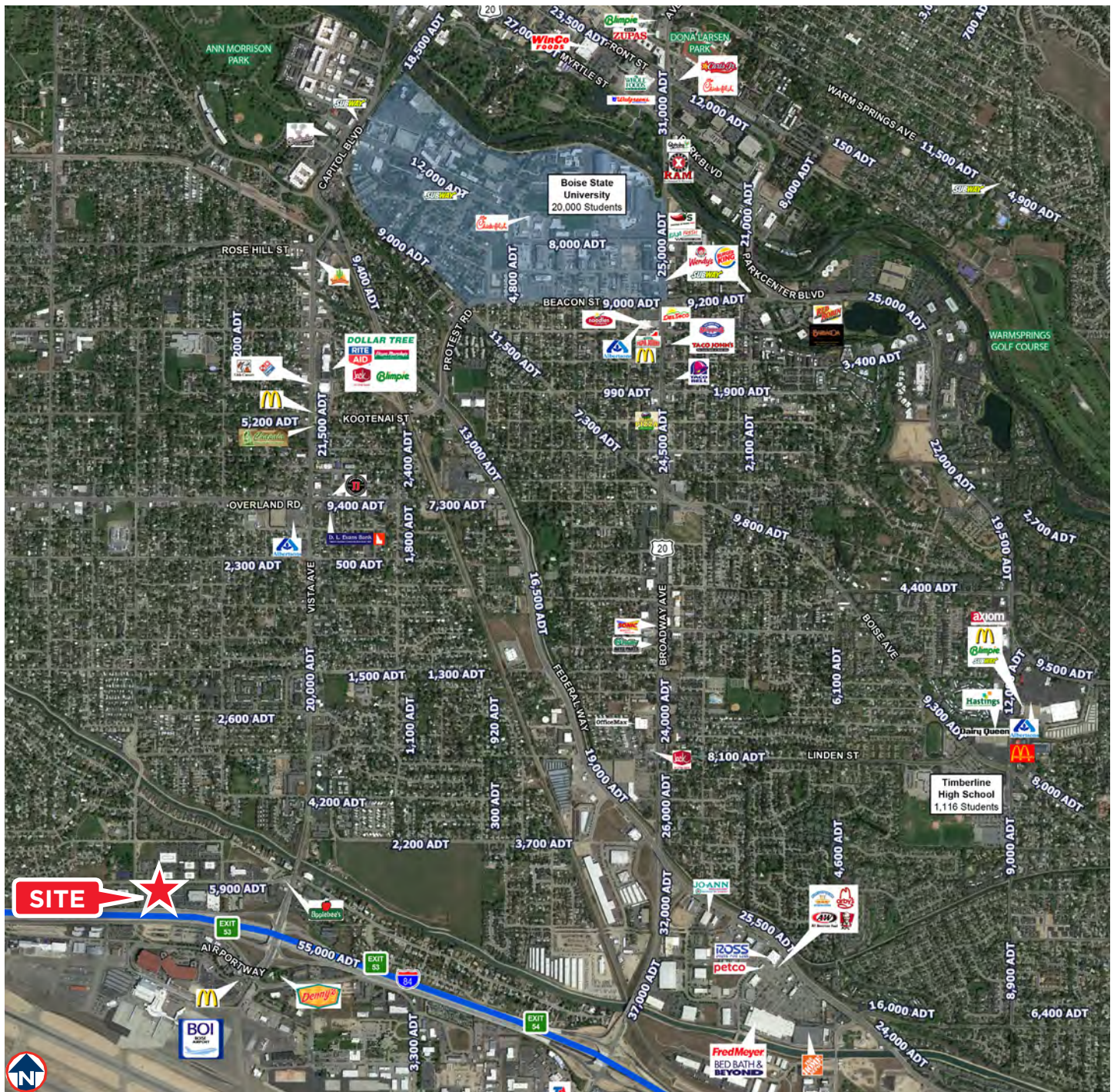
# AIRPORT PLAZA OFFICES

3295 West Elder Street, Boise, Idaho 83705

1,022 TO 11,982 SF FOR LEASE



SURROUNDING SERVICES INCLUDE HOTELS, RESTAURANTS & BOISE AIRPORT







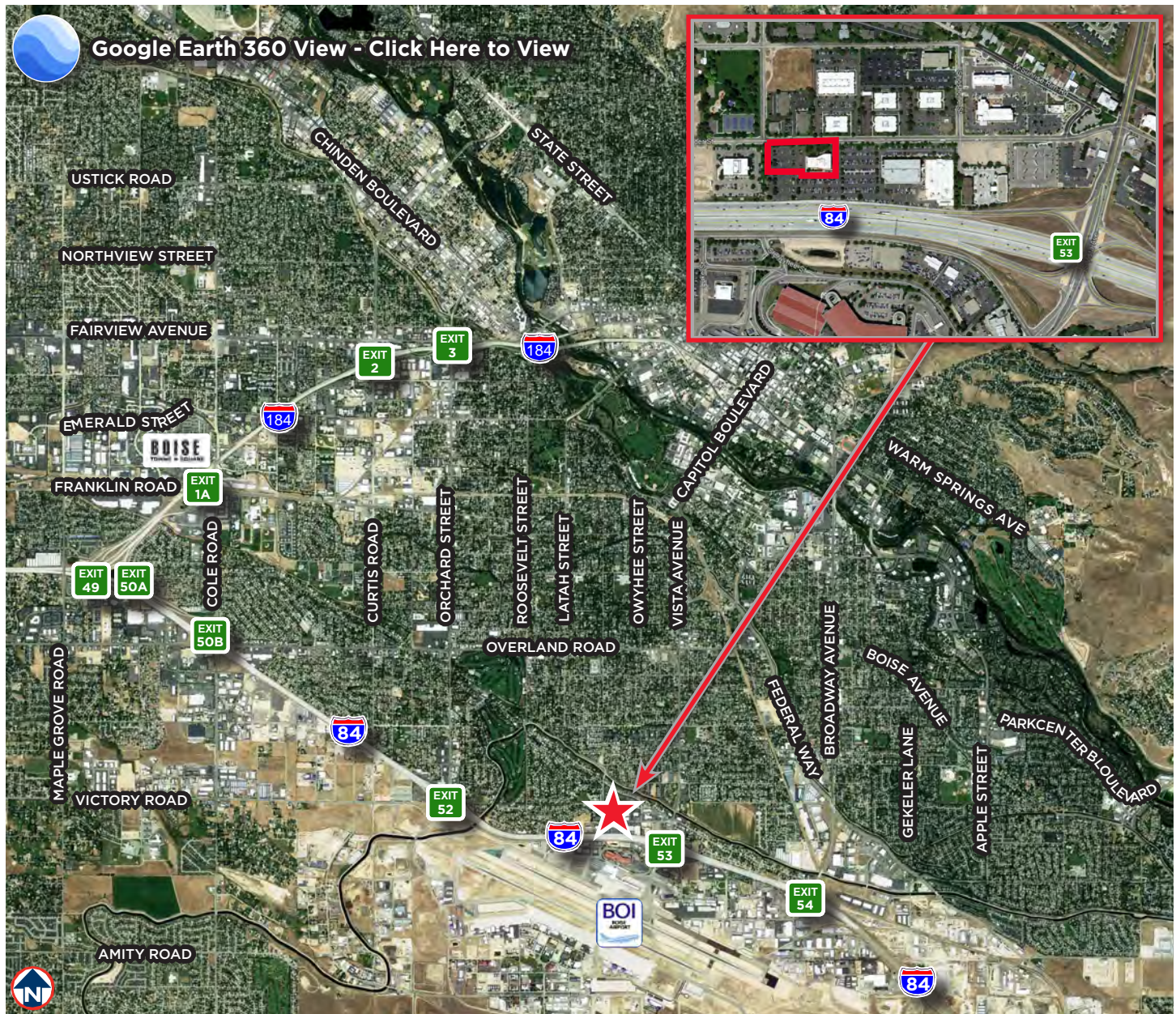
# AIRPORT PLAZA OFFICES

3295 West Elder Street, Boise, Idaho 83705

1,022 TO 11,982 SF FOR LEASE



MINUTES FROM DOWNTOWN AND THE SURROUNDING AREAS



## BREE WELLS

Director  
Office | Capital Markets  
+1 208 287 9492  
bree.wells@cushwake.com

## JENNIFER MCENTEE

Senior Director  
Office | Capital Markets  
+1 208 287 9495  
jennifer.mcentee@cushwake.com

## BRAYDON TORRES

Associate  
Office | Capital Markets  
+1 208 207 9485  
braydon.torres@cushwake.com

999 W Main Street, Ste 1300

Boise, Idaho 83702  
Main +1 208 287 9500  
Fax +1 208 287 9501  
cushmanwakefield.com