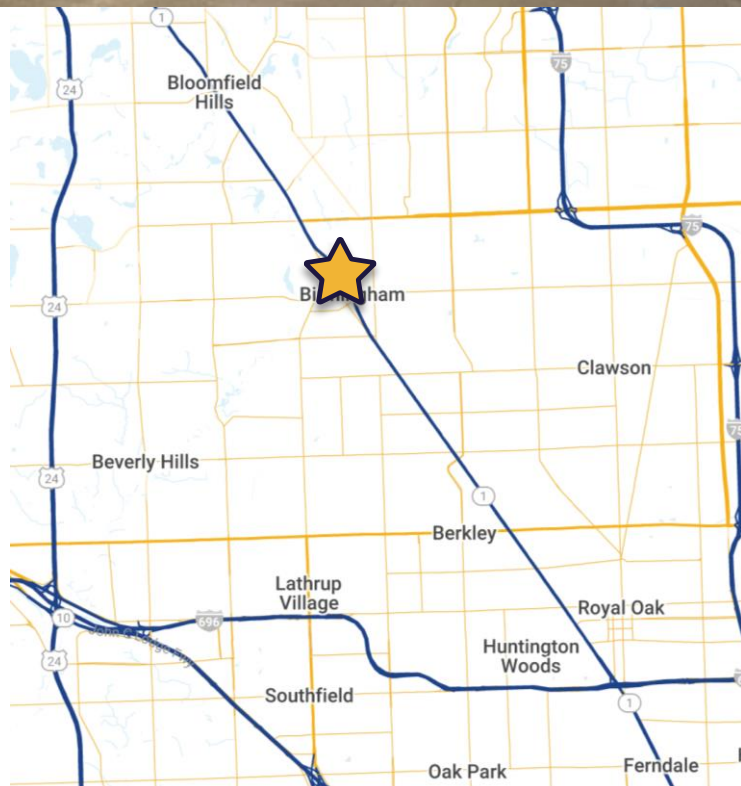


**13,127 SF****UPDATED OFFICE SPACE**

- Located in the heart of Downtown Birmingham
- One of Birmingham's most prestigious buildings
- Recent lobby and common area renovations
- FF&E available
- High visibility on Woodward Avenue
- Covered parking available in addition to municipal parking
- **Asking Rate:** Contact broker



**For more information,
please contact:**

John VanNoord
Senior Associate
+1 248 358 6106
john.vannoord@cushwake.com

Garrett Keais
Executive Managing Director
+1 248 358 6112
garrett.keais@cushwake.com

27777 Franklin Rd, Suite 1050
Southfield, MI 48034
+1 248 358 6100
cushmanwakefield.com



FOR LEASE

300 PARK STREET, SUITE 480

Birmingham, MI



**For more information,
please contact:**

John VanNoord
Senior Associate
+1 248 358 6106
john.vannoord@cushwake.com

Garrett Keais
Executive Managing Director
+1 248 358 6112
garrett.keais@cushwake.com

27777 Franklin Rd, Suite 1050
Southfield, MI 48034
+1 248 358 6100
cushmanwakefield.com



**CUSHMAN &
WAKEFIELD**

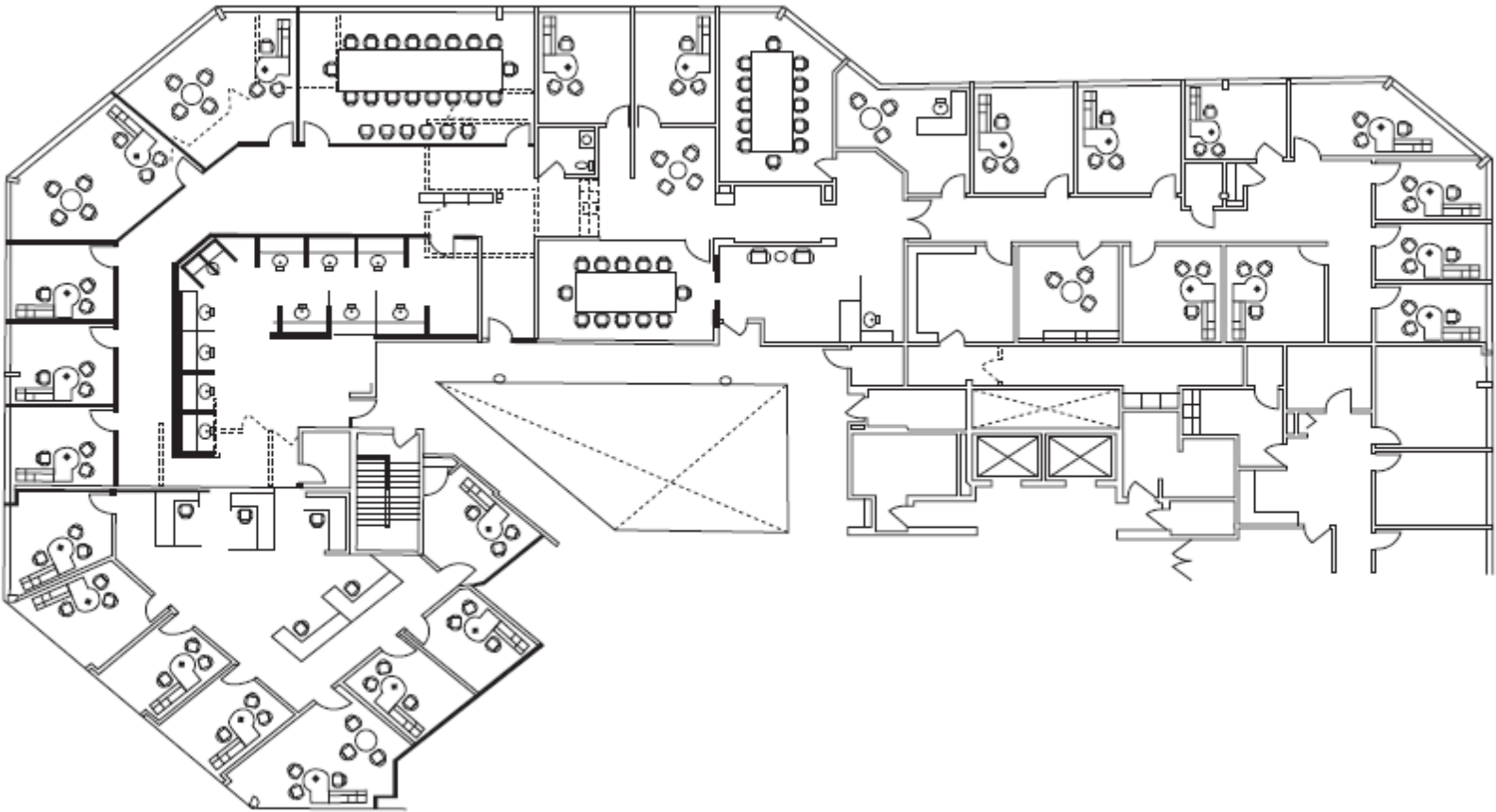
FOR LEASE

300 PARK STREET, SUITE 480

Birmingham, MI

FLOOR PLAN

13,127 SF



**For more information,
please contact:**

John VanNoord
Senior Associate
+1 248 358 6106
john.vannoord@cushwake.com

Garrett Keais
Executive Managing Director
+1 248 358 6112
garrett.keais@cushwake.com

27777 Franklin Rd, Suite 1050
Southfield, MI 48034
+1 248 358 6100
cushmanwakefield.com