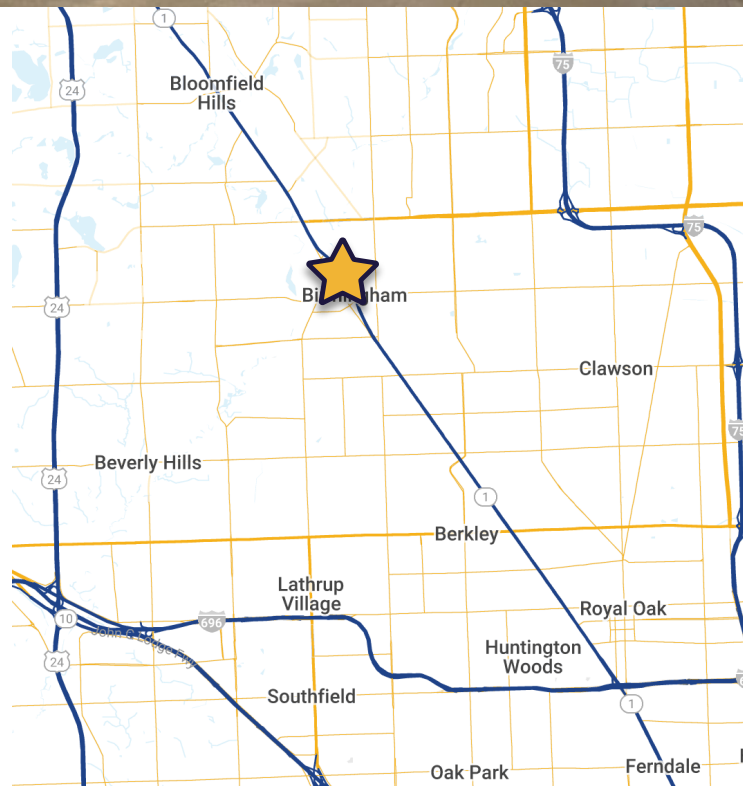


1,352 RSF

OFFICE SPACE

- Located in the heart of Downtown Birmingham
- One of Birmingham's most prestigious buildings
- Recent lobby and common area renovations
- High visibility on Woodward Avenue
- Covered parking available in addition to municipal parking
- **Available:** 1/1/25
- **Asking Rate:** \$33.00/SF Gross + Electric



**For more information,
please contact:**

John VanNoord
Senior Associate
+1 248 358 6106
john.vannoord@cushwake.com

Garrett Keais
Executive Managing Director
+1 248 358 6112
garrett.keais@cushwake.com

27777 Franklin Rd, Suite 1050
Southfield, MI 48034
+1 248 358 6100
cushmanwakefield.com



**CUSHMAN &
WAKEFIELD**

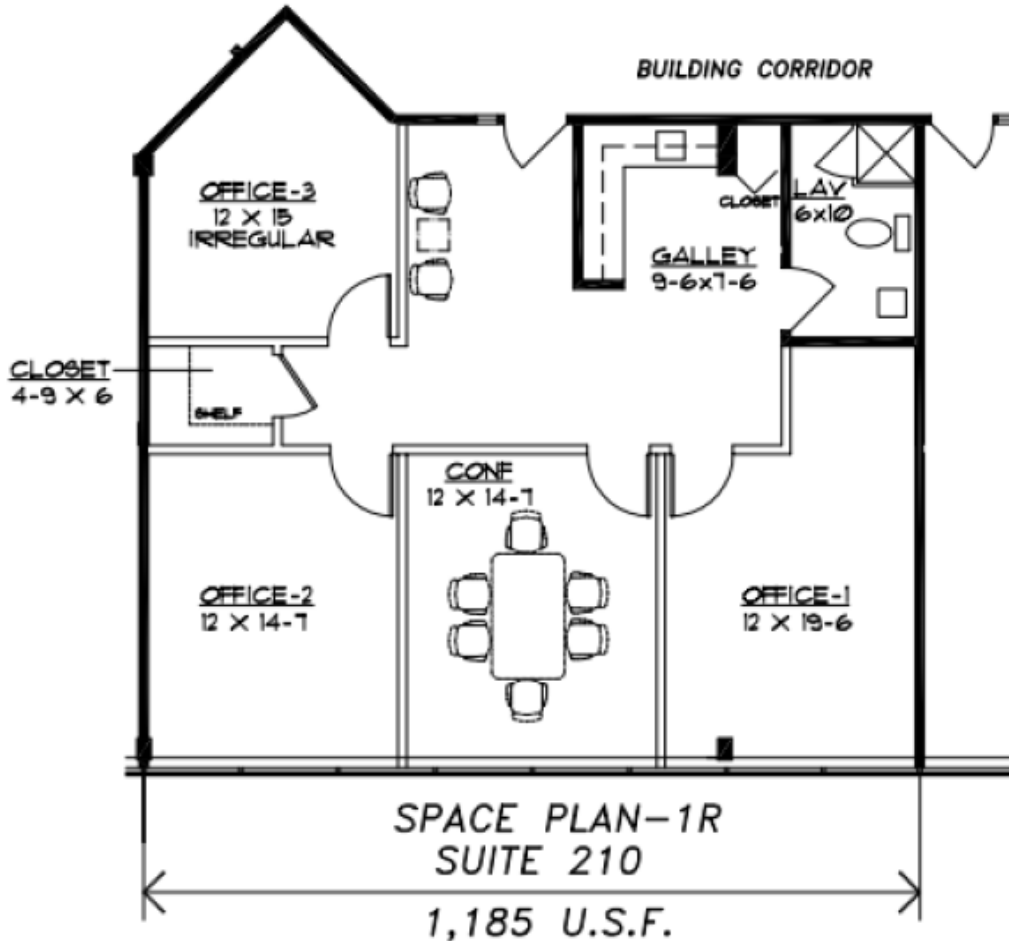
FOR LEASE

300 PARK STREET, SUITE 210

Birmingham, MI

FLOOR PLAN

1,352 RSF



1,351 R.S.F.

PARTIAL SECOND FLOOR



**DIMENSIONS APPROXIMATED/
FIELD VERIFY DIMENSIONS**



**For more information,
please contact:**

John VanNoord

Senior Associate

+1 248 358 6106

john.vannoord@cushwake.com

Garrett Keais

Executive Managing Director

+1 248 358 6112

garrett.keais@cushwake.com

27777 Franklin Rd, Suite 1050

Southfield, MI 48034

+1 248 358 6100

cushmanwakefield.com