

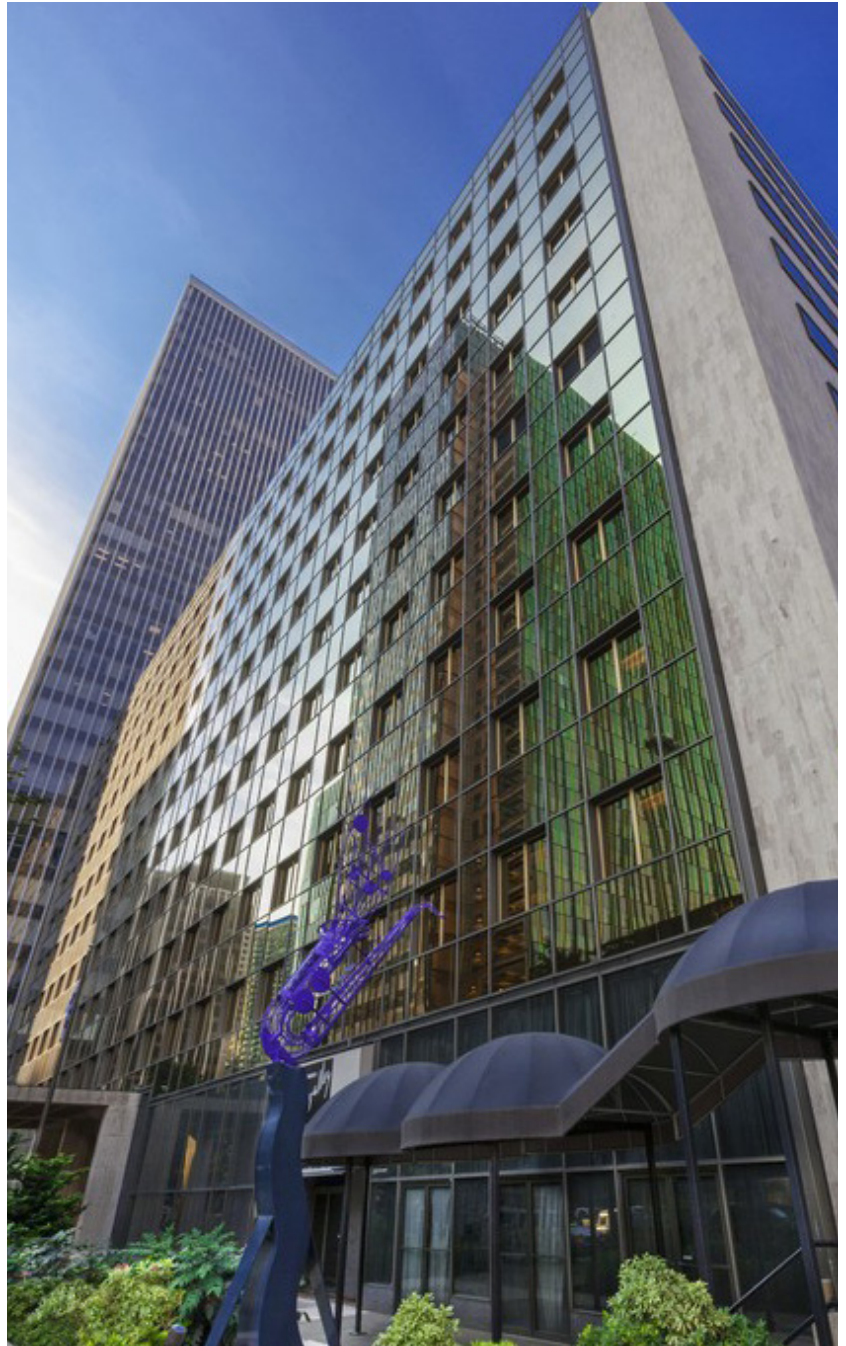
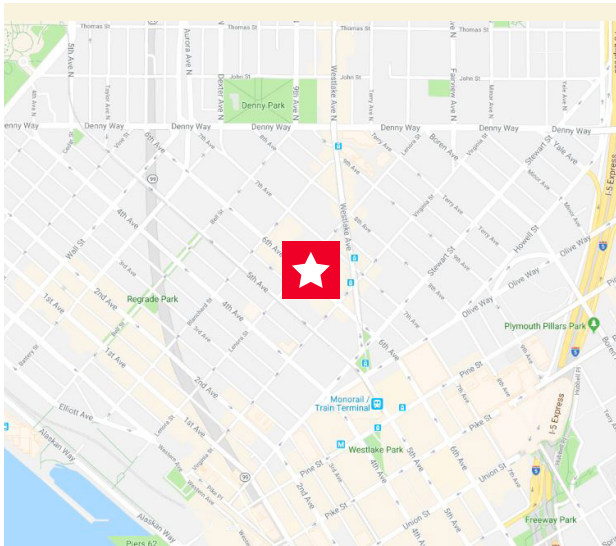
Sixth & Lenora Building

2033 6th Avenue / Seattle, WA

2,089 SF of Office Space on 10th Floor

Property Highlights

- Asking rate: Mid \$30's FS
- Sublease term through 12/31/21
- 4 private offices, 10 person conference room, 4 person meeting room, 4 workstations, kitchenette
- \$1.25 per RSF per year of sublease term to Subtenant's broker
- Furniture available



Will Carroll
+1 206 521 0244
will.carroll@cushwake.com

1420 Fifth Avenue
Suite 2600
Seattle, WA 98101
T +1 206 682 0666
F +1 206 521 0298
www.cushmanwakefield.com

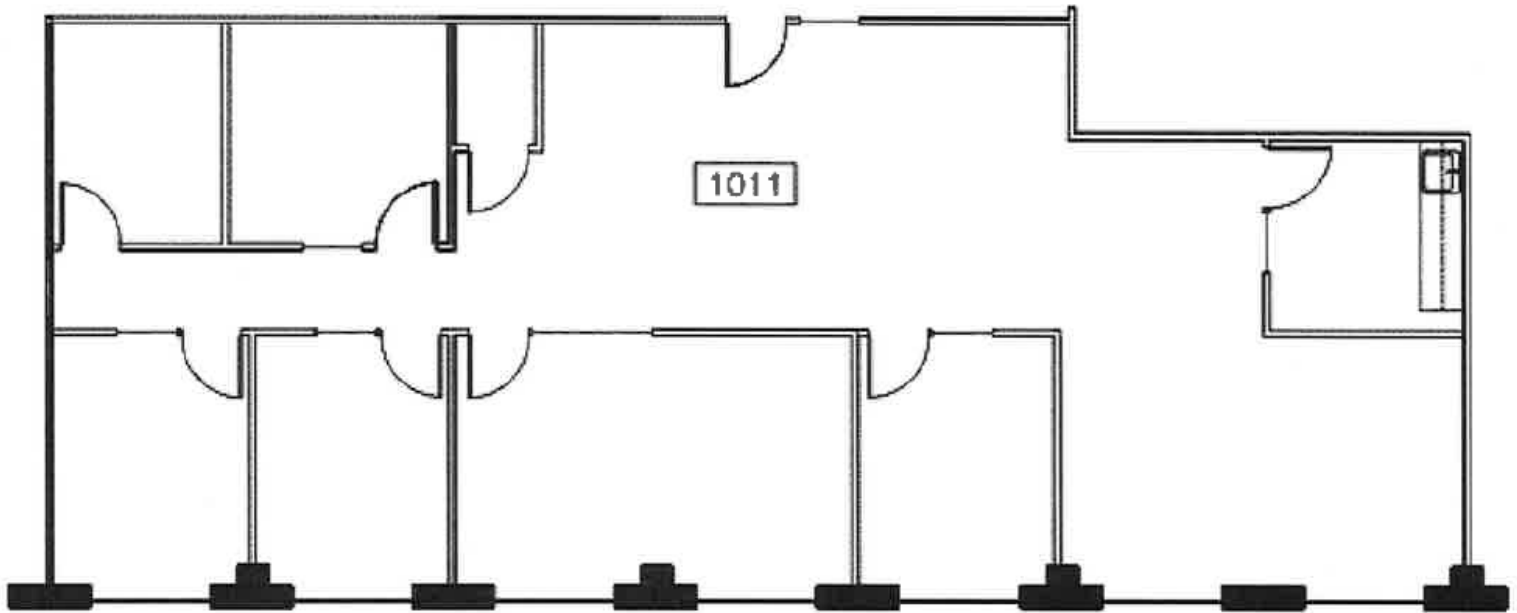


FOR SUBLEASE

Sixth & Lenora Building

2033 6th Avenue / Seattle, WA

Floor Plan



Will Carroll
+1 206 521 0244
will.carroll@cushwake.com

1420 Fifth Avenue, Suite 2600
Seattle, WA 98101

T +1 206 682 0666

F +1 206 521 0298

www.cushmanwakefield.com

Cushman & Wakefield Copyright 2018. No warranty or representation, express or implied, is made to the accuracy or completeness of the information contained herein, and same is submitted subject to errors, omissions, change of price, rental or other conditions, withdrawal without notice, and to any special listing conditions imposed by the property owner(s). As applicable, we make no representation as to the condition of the property (or properties) in question.