



FOR LEASE

# CENTRAL COURT

37600 CENTRAL COURT, NEWARK, CA



## PROPERTY HIGHLIGHTS

- Office and Industrial Units
- Newly Remodeled Common Areas and Atrium
- Common Breakroom
- Building Power: 21 kV / 12,000 Amp at 480/277 Volts
- Great Central Location with Easy Access to Highway 880 and Highway 101 via the Dumbarton Bridge



**Scott Dever**  
Managing Director  
+1 408 615 3457  
scott.dever@cushwake.com  
LIC #01890552

300 Santana Row, Fifth Floor  
San Jose, CA 95128  
main +1 408 615 3400

[cushmanwakefield.com](http://cushmanwakefield.com)

Cushman & Wakefield Copyright 2025. No warranty or representation, express or implied, is made to the accuracy or completeness of the information contained herein, and same is submitted subject to errors, omissions, change of price, rental or other conditions, withdrawal without notice, and to any special listing conditions imposed by the property owner(s). As applicable, we make no representation as to the condition of the property (or properties) in question.



**CUSHMAN &  
WAKEFIELD**

FOR LEASE

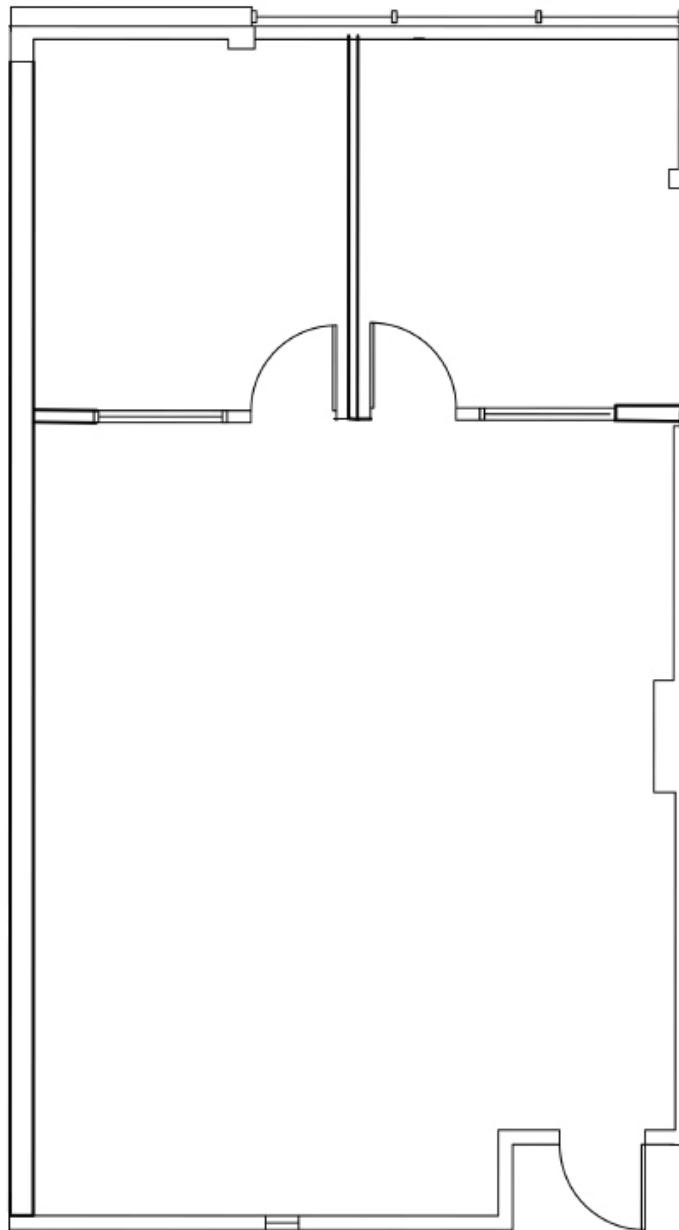
# CENTRAL COURT

37600 CENTRAL COURT, NEWARK, CA

## FLOOR PLAN

Second Floor Office Unit

**Suite 212 | ±965 SF**



**Scott Dever**

Managing Director

+1 408 615 3457

scott.dever@cushwake.com

LIC #01890552

300 Santana Row, Fifth Floor  
San Jose, CA 95128  
main +1 408 615 3400

**cushmanwakefield.com**



**CUSHMAN &  
WAKEFIELD**

FOR LEASE

# CENTRAL COURT

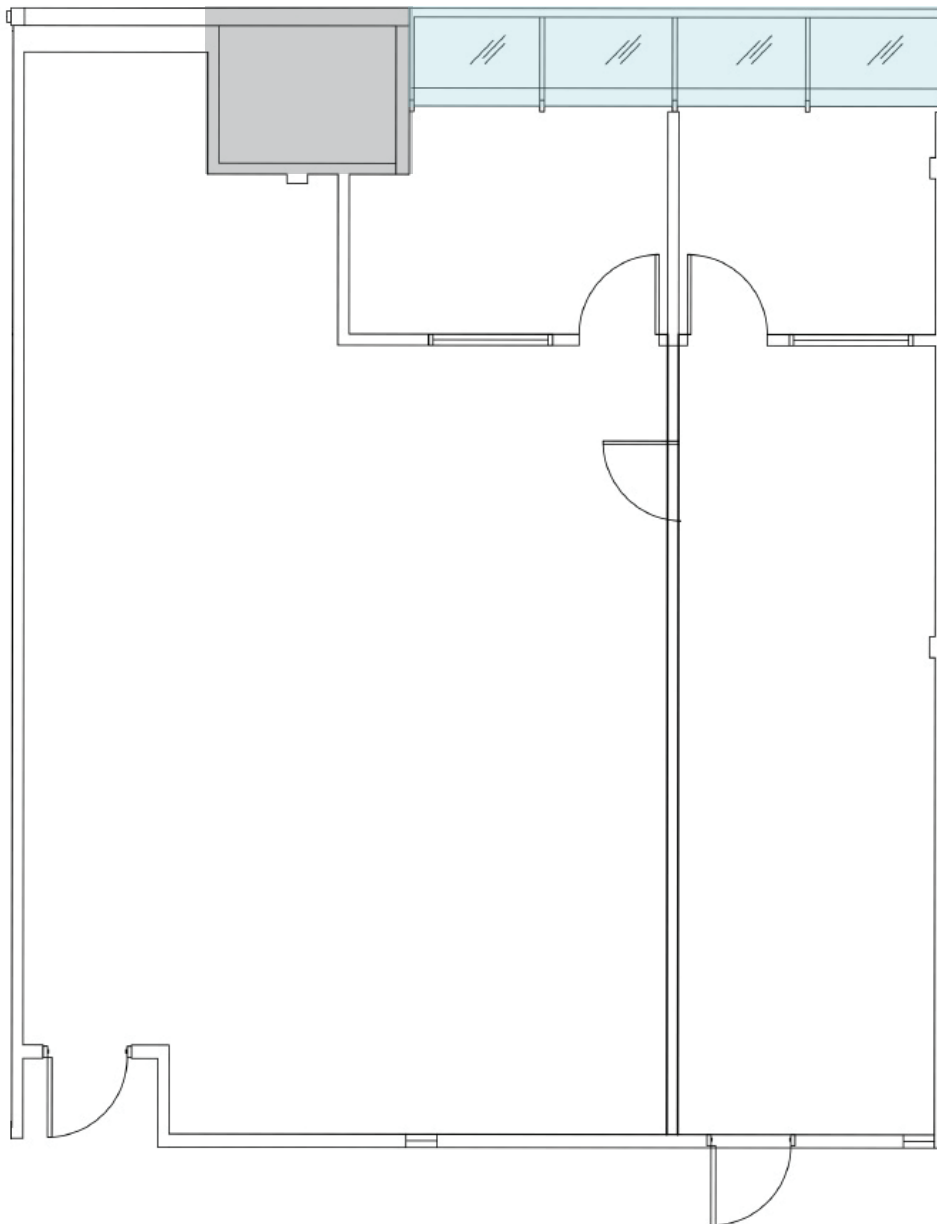
37600 CENTRAL COURT, NEWARK, CA

## FLOOR PLAN

Second Floor Office Units

**Suite 213A/214**

**±1,156 SF - ±1,606 SF**



**Scott Dever**  
Managing Director  
+1 408 615 3457  
scott.dever@cushwake.com  
LIC #01890552

300 Santana Row, Fifth Floor  
San Jose, CA 95128  
main +1 408 615 3400

[cushmanwakefield.com](http://cushmanwakefield.com)