



FOR SALE OR LEASE

# Medical Plaza One

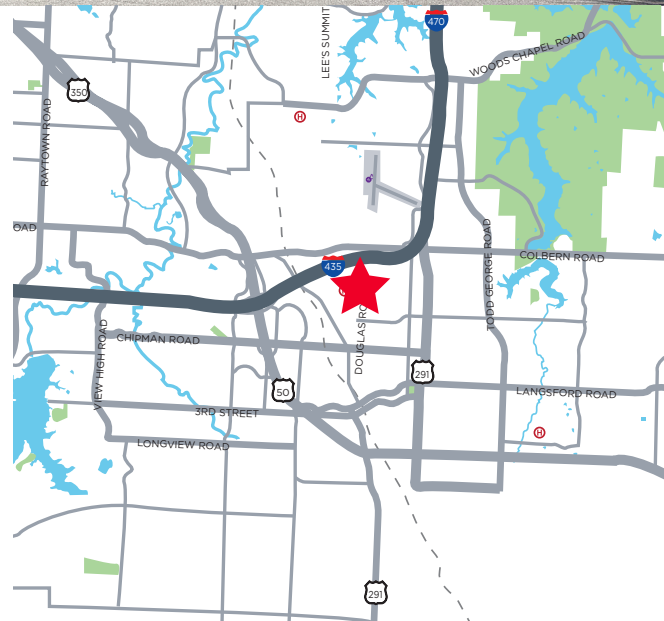
1741 NE Douglas Street / Lee's Summit, MO

16,907 SF MEDICAL/OFFICE BUILDING



## Property Highlights

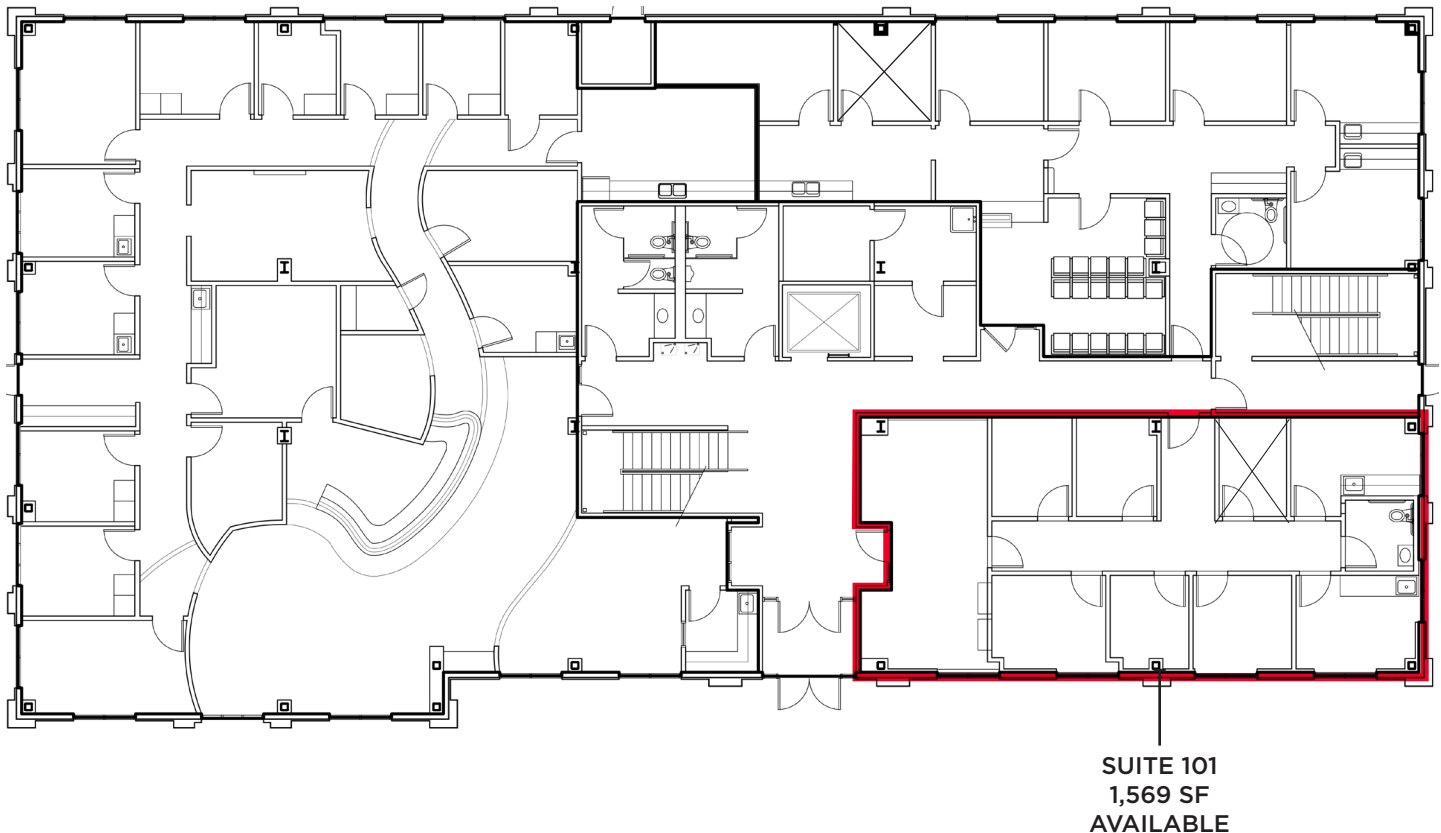
- 16,907 SF Medical/Office Building for sale
- Excellent owner-user opportunity with over 9,200 SF of medical office space for lease
- Building façade signs available with exposure to I-470
- Adjacent to Saint Lukes East and a 5 minute drive to University Health Lakewood Medical Center
- Great access to Interstate 470 with over 67,000 cars per day
- Lee's Summit has been named the #5 "Most Livable Small Cities in the U.S." by SmartAsset (2020)
- Lease Rate: \$25.00 PSF Net of Janitorial
- Sale Price: \$4,000,000



**Suzanne Dimmel, CCIM**  
Director  
+1 816 412 0271  
suzanne.dimmel@cushwake.com

**Andrew Greene**  
Director  
+1 816 216 5654  
andrew.greene@cushwake.com

4600 Madison Avenue, Suite 800  
Kansas City, MO 64112  
Main +1 816 221 2200  
Fax +1 913 273 1398  
**cushmanwakefield.com**

**First Floor Plan****SUITE 101**

- Reception
- Enclosed front desk with pass-through to reception
- 4 offices/exam rooms
- 2 exam rooms with water (could be used as a breakroom)
- Private restroom

**Suzanne Dimmel, CCIM**  
Director  
+1 816 412 0271  
suzanne.dimmel@cushwake.com

**Andrew Greene**  
Director  
+1 816 216 5654  
andrew.greene@cushwake.com

4600 Madison Avenue, Suite 800  
Kansas City, MO 64112  
Main +1 816 221 2200  
Fax +1 913 273 1398  
**cushmanwakefield.com**

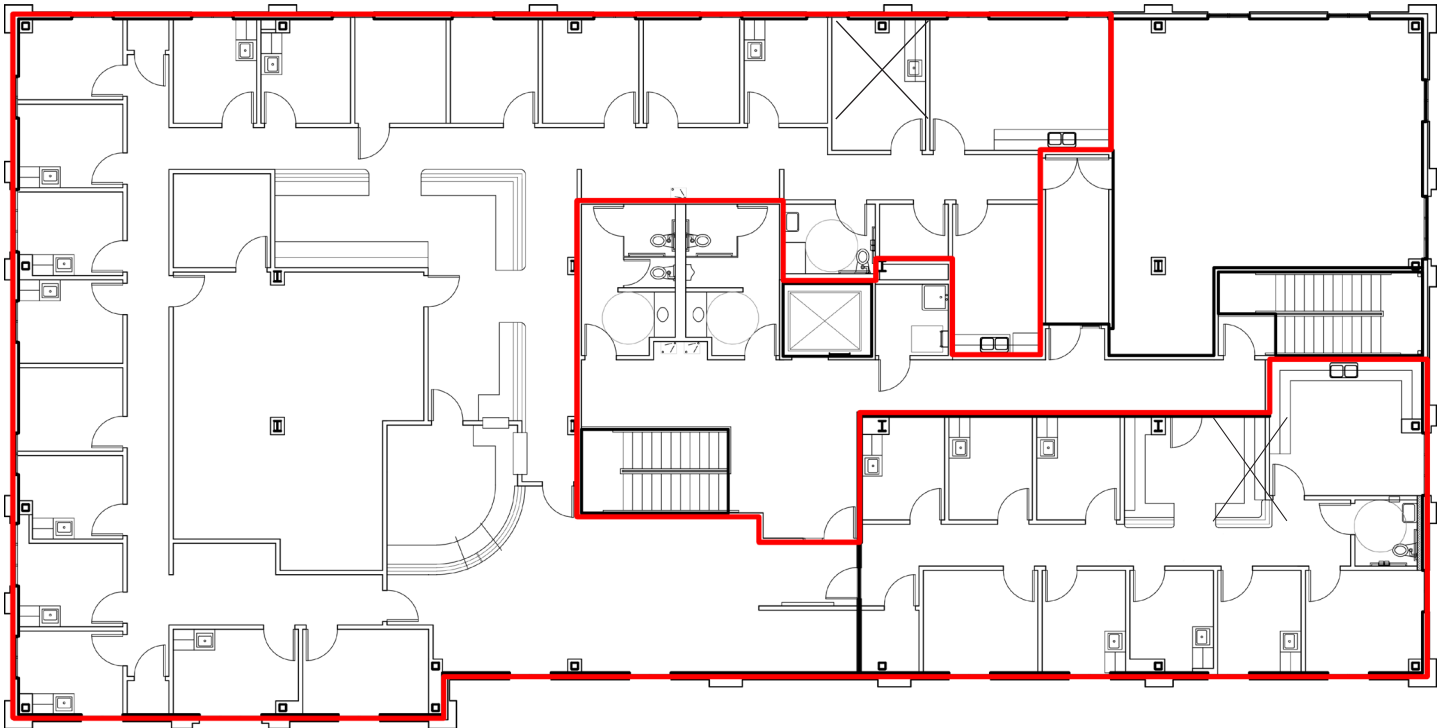


FOR SALE OR LEASE

# Medical Plaza One

1741 NE Douglas Street / Lee's Summit, MO

## Second Floor Plan



**Suzanne Dimmel, CCIM**  
Director  
+1 816 412 0271  
suzanne.dimmel@cushwake.com

**Andrew Greene**  
Director  
+1 816 216 5654  
andrew.greene@cushwake.com

4600 Madison Avenue, Suite 800  
Kansas City, MO 64112  
Main +1 816 221 2200  
Fax +1 913 273 1398  
**cushmanwakefield.com**





FOR SALE OR LEASE

# Medical Plaza One

1741 NE Douglas Street / Lee's Summit, MO

## Exterior Photos



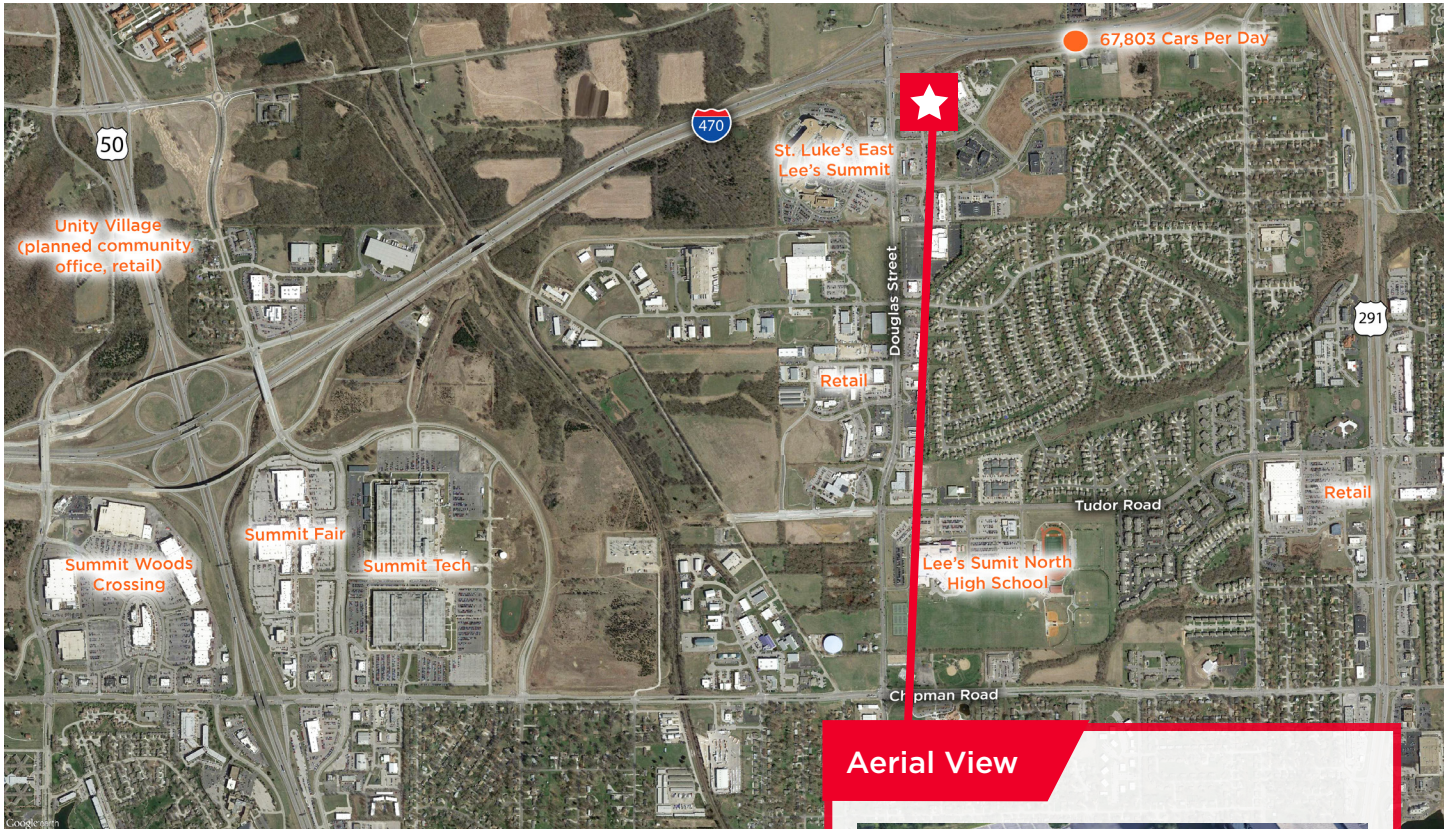
**Suzanne Dimmel, CCIM**  
Director  
+1 816 412 0271  
suzanne.dimmel@cushwake.com

**Andrew Greene**  
Director  
+1 816 216 5654  
andrew.greene@cushwake.com

4600 Madison Avenue, Suite 800  
Kansas City, MO 64112  
Main +1 816 221 2200  
Fax +1 913 273 1398  
**cushmanwakefield.com**



## Aerial



### Aerial View



## Demographics

	1 Mile	3 Miles	5 Miles
Population	3,566	45,267	85,439
Households	1,341	18,828	33,556
Average HH Income	\$89,693	\$77,744	\$91,811
Daytime Population	3,209	35,306	47,138
# Businesses	307	2,635	3,671

**Suzanne Dimmel, CCIM**  
Director  
+1 816 412 0271  
suzanne.dimmel@cushwake.com

**Andrew Greene**  
Director  
+1 816 216 5654  
andrew.greene@cushwake.com

4600 Madison Avenue, Suite 800  
Kansas City, MO 64112  
Main +1 816 221 2200  
Fax +1 913 273 1398  
**cushmanwakefield.com**