



PACIFIC VIEW PLAZA

5973 AVENIDA ENCINAS | CARLSBAD, CA

Under New Ownership &
Extensive Building Renovations Underway

PROPERTY HIGHLIGHTS

Pacific View Plaza is a three-story office building in the coastal community of Carlsbad. The property offers ocean views, an open-atrium design, efficient floor layouts, and on-site amenities. Its prime location near Carlsbad's dining spots and beaches, along with easy access to Interstate 5, makes it an optimal choice for businesses seeking space in the Carlsbad area.



54,446 SF
total



Under new
ownership



Open-atrium
courtyard



Ocean & Carlsbad
Flower Fields views



Walking distance to
numerous restaurants



On-site locker
room & showers



EXTERIOR IMPROVEMENTS

COMPLETED RECENTLY



FRONT ELEVATION



BACK ELEVATION

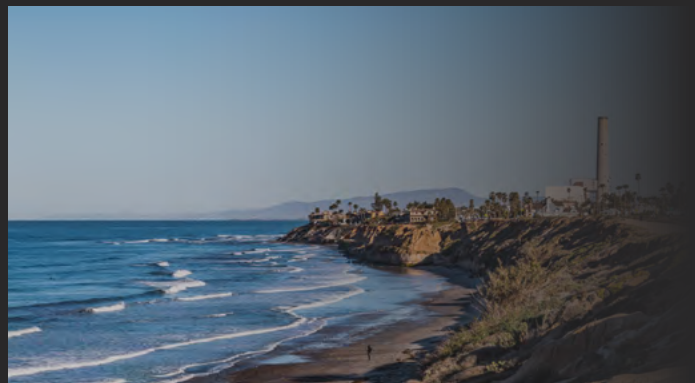


INTERIOR COURTYARD

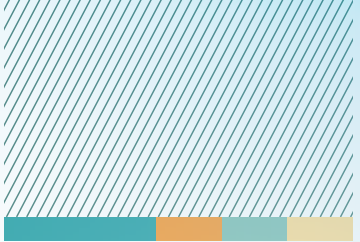


PRIME
ocean-view
OFFICES








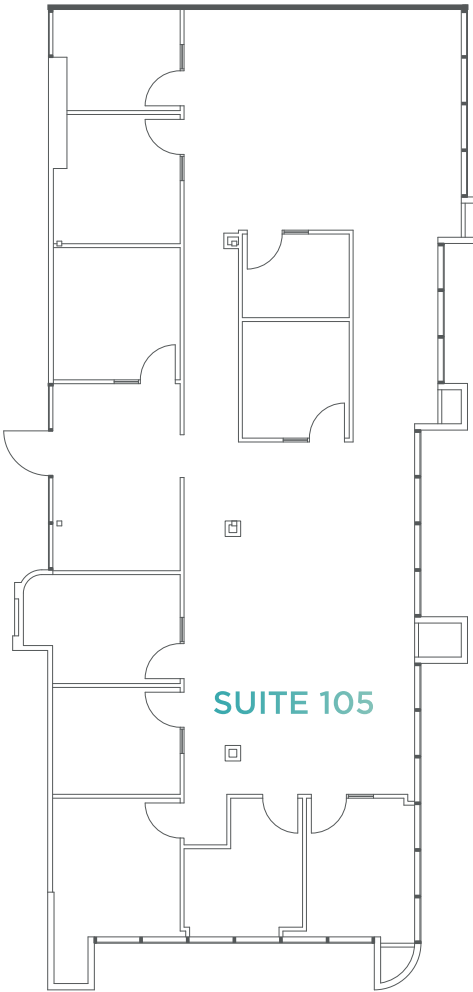
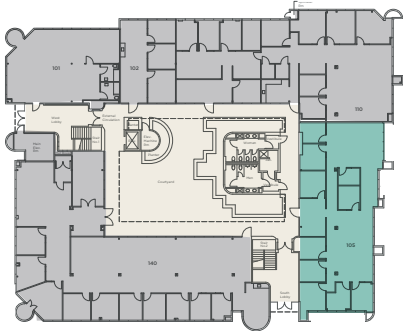
FIRST FLOOR AVAILABILITIES



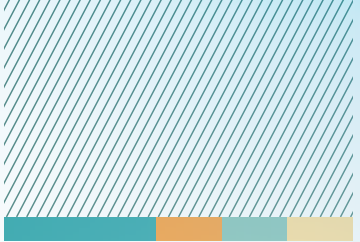
SUITE 105: 3,395 SF

Open ceilings, creative space

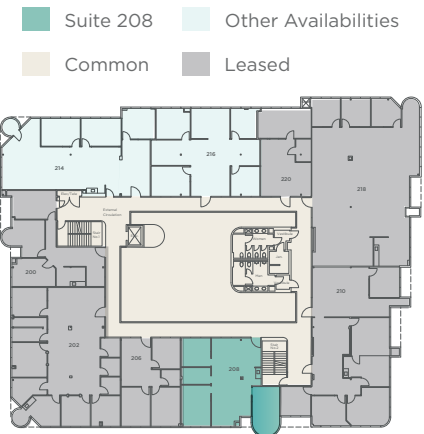
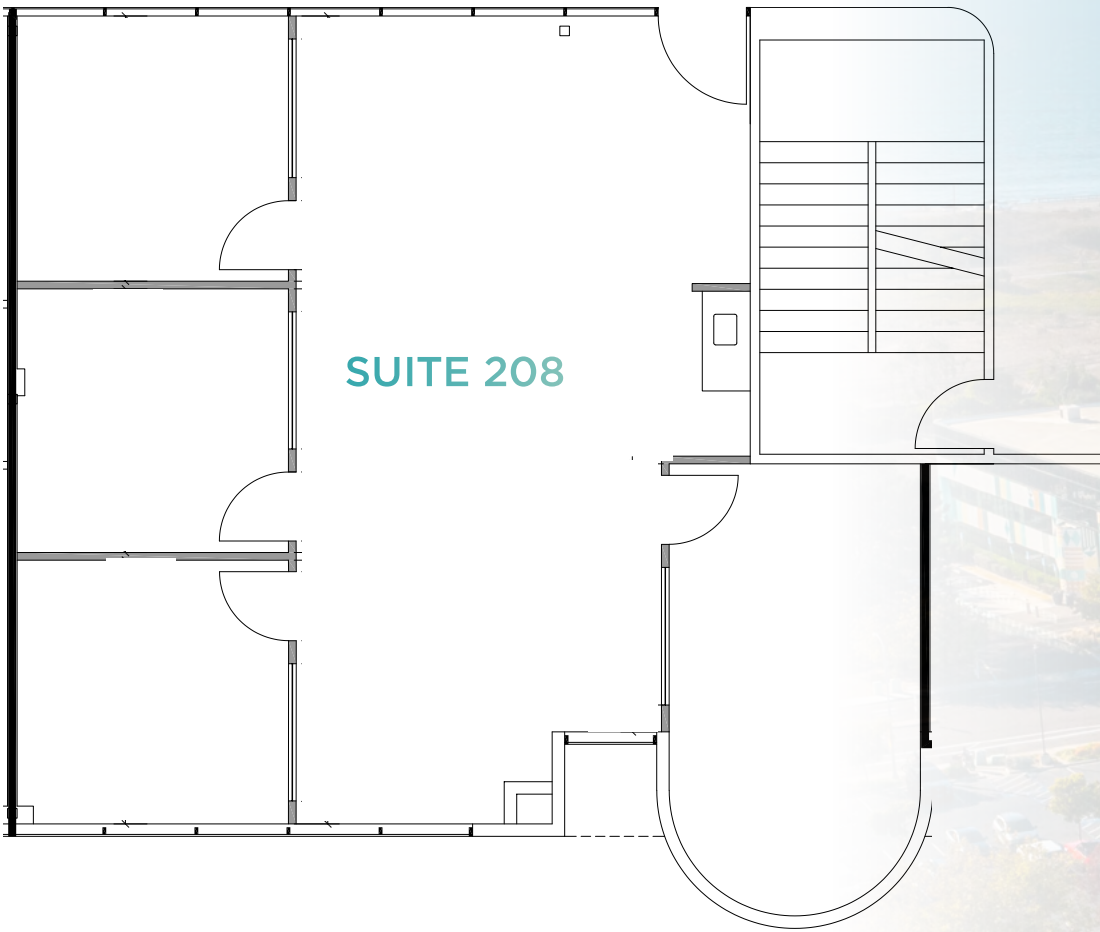
-  Suite 105
-  Common
-  Leased



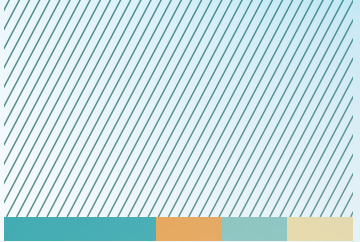
SECOND FLOOR AVAILABILITIES



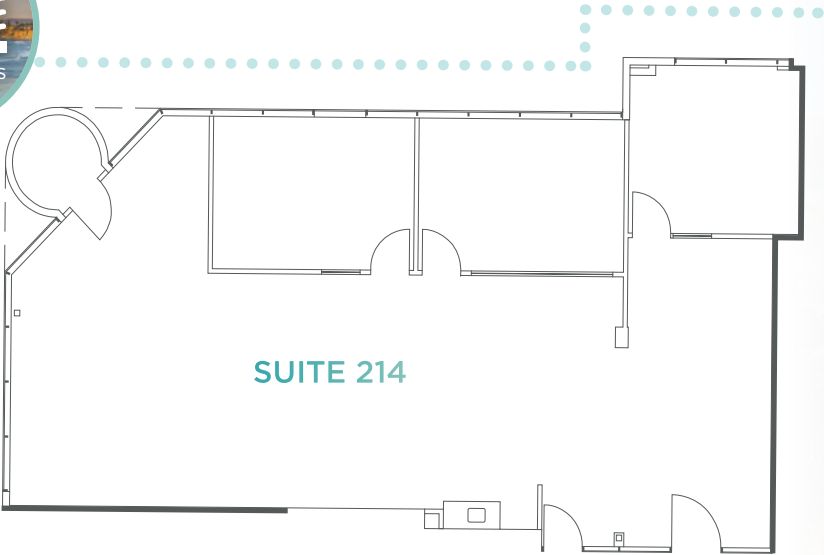
SUITE 208: 1,611 SF
NEW SPEC SUITE



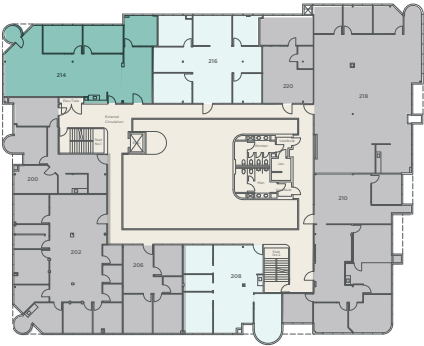
SECOND FLOOR AVAILABILITIES



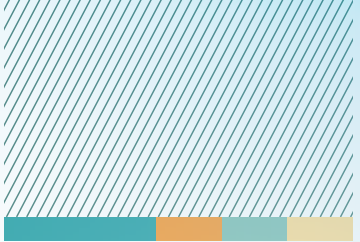
SUITE 214: 2,314 SF
*Can be combined with suite 216 for 4,230 RSF



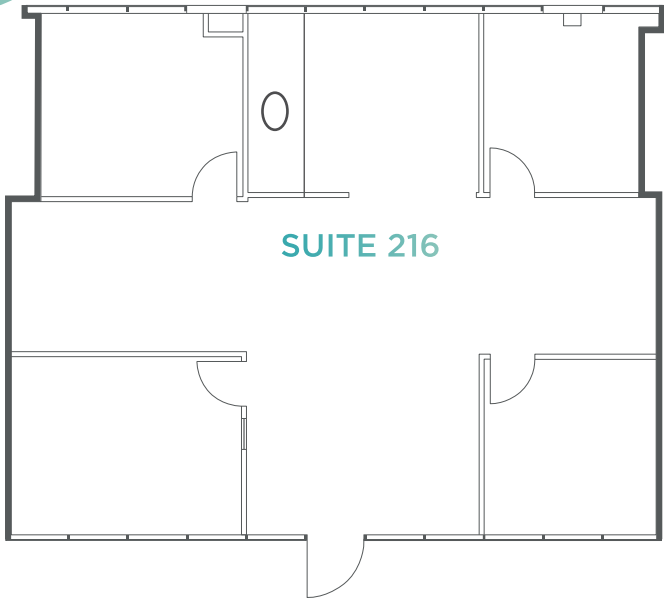
- Suite 214
- Other Availabilities
- Common
- Leased



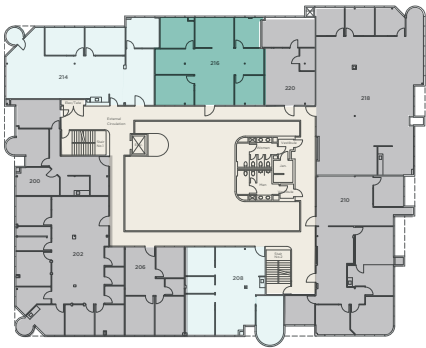
SECOND FLOOR AVAILABILITIES



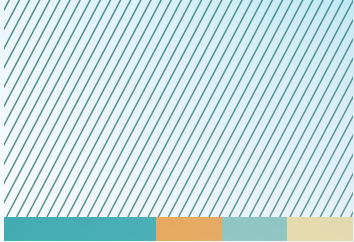
SUITE 216: 1,916 SF
*Can be combined with suite 214 for 4,230 RSF



- Suite 216
- Other Availabilities
- Common
- Leased

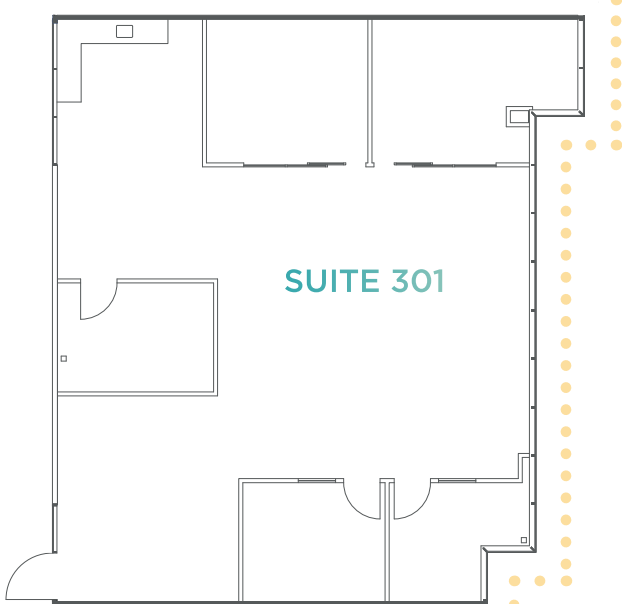


THIRD FLOOR AVAILABILITIES

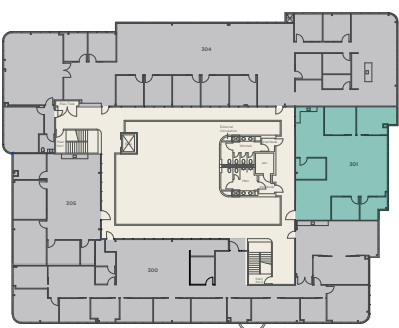


SUITE 301: 2,413 SF

AVAILABLE 4/1/2025



■ Suite 301
■ Common ■ Leased





PACIFIC VIEW PLAZA



JOE ANDERSON
Senior Director
CA License #01280854
Mobile: 760-415-3245
joe.anderson@cushwake.com

BROOKS CAMPBELL
Senior Director
CA License #01380901
Mobile: 760-500-7720
brooks.campbell@cushwake.com

DANIELLE BERGSON
Associate
CA License #02196210
Mobile: 808-419-0042
danielle.bergson@cushwake.com



©2025 Cushman & Wakefield. All rights reserved. The information contained in this communication is strictly confidential. This information has been obtained from sources believed to be reliable but has not been verified. NO WARRANTY OR REPRESENTATION, EXPRESS OR IMPLIED, IS MADE AS TO THE CONDITION OF THE PROPERTY (OR PROPERTIES) REFERENCED HEREIN OR AS TO THE ACCURACY OR COMPLETENESS OF THE INFORMATION CONTAINED HEREIN, AND SAME IS SUBMITTED SUBJECT TO ERRORS, OMISSIONS, CHANGE OF PRICE, RENTAL OR OTHER CONDITIONS, WITHDRAWAL WITHOUT NOTICE, AND TO ANY SPECIAL LISTING CONDITIONS IMPOSED BY THE PROPERTY OWNER(S). ANY PROJECTIONS, OPINIONS OR ESTIMATES ARE SUBJECT TO UNCERTAINTY AND DO NOT SIGNIFY CURRENT OR FUTURE PROPERTY PERFORMANCE. COE-PM-West-01.27.2025