

BEACHWALK

New Ownership | Exciting Renovations Coming Soon!



OFFICE SPACE FOR LEASE
437 S. Highway 101, Solana Beach, CA 92075

 CUSHMAN &
WAKEFIELD

 CAPSTONE
ADVISORS

BEACHWALK

Less than 5 Minutes to:

- *Fletcher's Cove and Dog Beach*
- *Cedros Design District*
- *I-5*
- *Amtrak Transit Stations*
- *San Diego Fairgrounds and Del Mar Racetrack*

Leave behind crowded commutes and cookie-cutter cubicles for ocean breezes and a bustling community of amenities and experiences. BeachWalk is a 55,580 SF mixed-use development offering premium office spaces in a sought-after Solana Beach destination. The location places you amongst top retail, dining, and wellness services as well as close access to major thoroughfares and entertainment. Complete with a walkable beach location, it's the ultimate setting for connection and productivity.



High end creative spec suites are available immediately



Signage opportunities



Located along S Hwy 101 with visibility to 19,395 vehicles per day



Zoning: office, medical, and retail



276 surface and covered parking
20 additional spaces along Highway 101

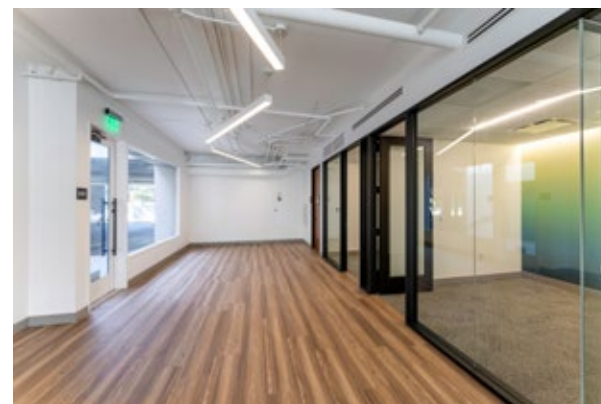
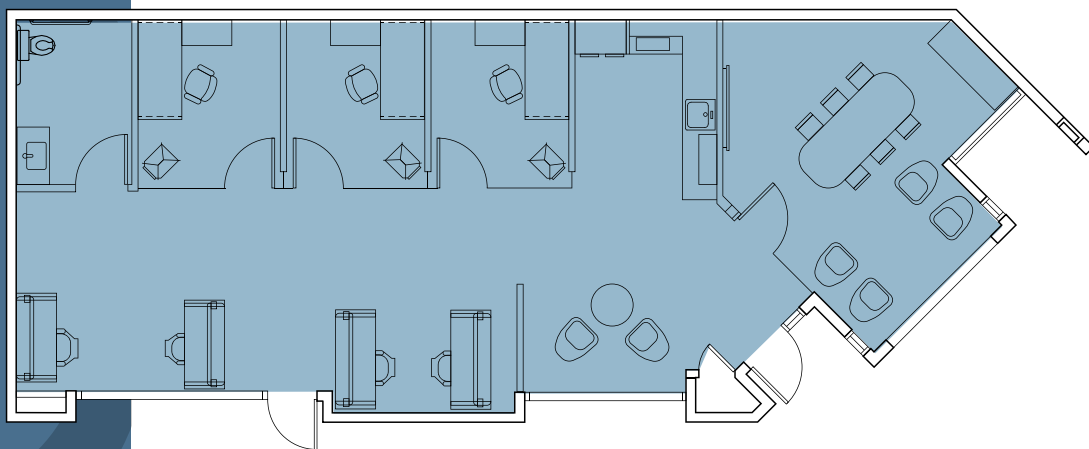


Dozens of shops and restaurants along
Highway 101 and Cedros Design District

SUITE 110

1,915 SF

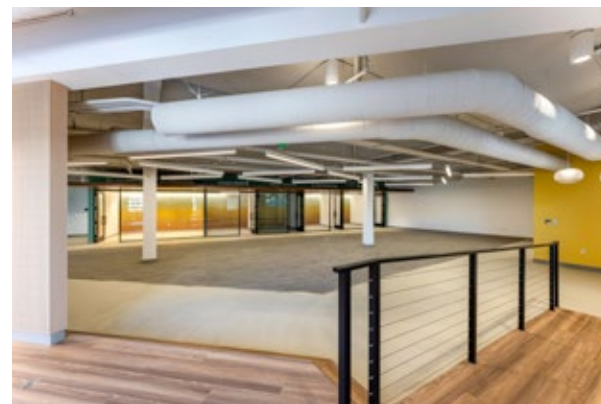
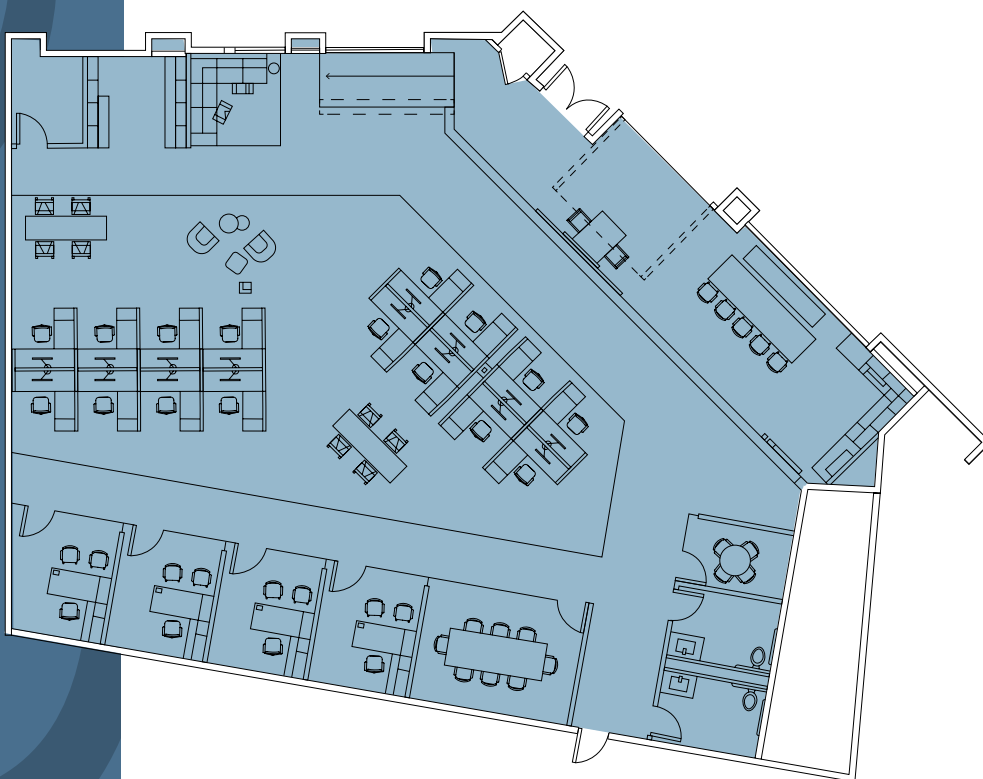
- LIGHT & BRIGHT CREATIVE SPEC SUITE
- 3 PRIVATE OFFICES
- CONFERENCE ROOM WITH GLASS ROLL-UP DOOR
- IN-SUITE KITCHEN AND RESTROOM
- OPEN AREA FOR WORKSTATIONS PLUS RECEPTION AREA AND TENANT LOUNGE



SUITE 112

5,423 SF

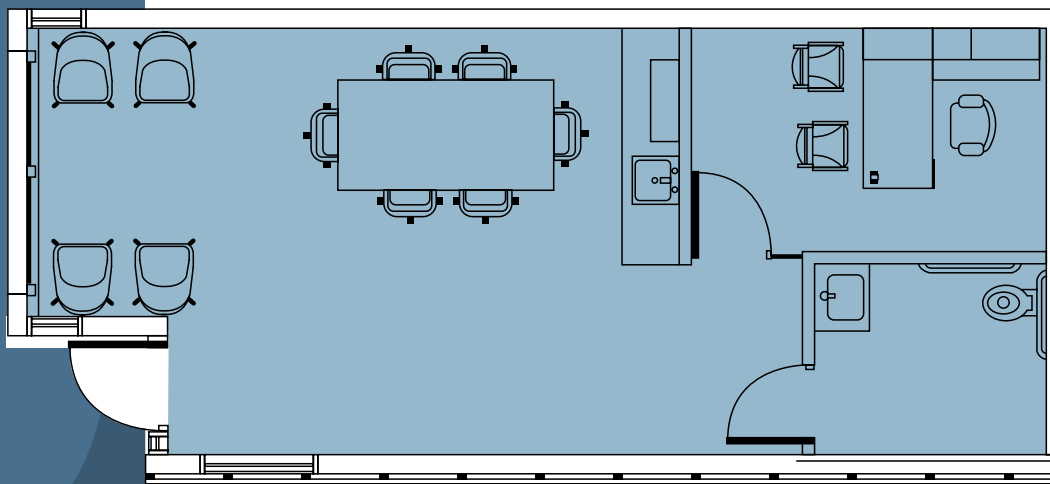
- LIGHT & BRIGHT CREATIVE SPEC SUITE
- CONFERENCE ROOM WITH GLASS ROLL-UP DOOR
- ONE ADDITIONAL CONFERENCE ROOM AND MEETING ROOM
- IN-SUITE KITCHEN AND RESTROOM
- OPEN AREA FOR WORKSTATIONS PLUS RECEPTION AREA AND TENANT LOUNGE



SUITE 114

790 SF

- LIGHT & BRIGHT CREATIVE SPEC SUITE
- ONE PRIVATE OFFICE WITH IN-SUITE KITCHEN AND RESTROOM
- GLASS ROLL-UP DOOR CONNECTING TO OUTDOOR PATIO



SITE PLAN





Suite 112

HIGH END FINISHED CREATIVE SPEC SUITES

Modern Finishes | Flexible Floorplans | Lots of Natural Light



Covered garage space with
abundant EV charging station's



Suite 110



Suite 112

AVAILABLE IMMEDIATELY

FROM SURFBOARD TO BOARDROOM TO BOARDWALK

Working at BeachWalk places you steps away to sought after retail, dining, wellness, and entertainment. You can start the day surfing at Solana Beach or at one of the many wellness centers before arriving refreshed at the office with coffee from your favorite roaster. For lunch, head out for a quick bite or entertain clients at Rare Society. After work, walk to Belly Up for a concert or take the Surfliner up to Orange County and beyond.



DINING

- Choice Juicery
- Vino Carta
- Achilles Coffee
- Solana Beach Kitchen
- Barefoot Coffee Roasters
- Rare Society
- Madeline Cafe & Bakery
- Grange Garden
- Lofty Coffee
- Carruth Cellars Urban Winery
- Similan Thai
- Tavern
- Culture Brewing Co.
- Pillbox Tavern
- Pizza Port
- Chief's Burgers and Brew

RETAIL

- CVS
- Revolution Bike Shop
- Solana Beach Farmer's Market
- Pedego Electric Bikes
- Clutch Modern
- David Allen Collection
- Muttropolis

WELLNESS

- The Boxing Club
- Jet Rhys Hair
- Grotto Spa
- NATURA Skin Care
- Banfield Pet Hospital
- YogaSix
- Pilates Movement
- F45 Training

SOLANA BEACH: WHERE THE OCEAN MEETS EVERYDAY LIFE

Solana Beach – which loosely translates to “sunny spot” – is a thriving coastal city in northern San Diego known for shopping, dining, and culture. Cedros Design District offers over two blocks of independent boutiques, spas, and restaurants. The Belly Up is one of the hottest live music venues on the west coast and hosts intimate concerts for some of the biggest names in music. Solana Beach’s coastline stretches 1.7 miles and it’s coastal rail trail is the perfect path for walkers, joggers, bicyclists and skaters.

Solana Beach’s pristine coastline, amenities, annual festivals, and perpetual sunshine make it the perfect place to grow your business.

DEMOGRAPHICS

Total Population:

34,366

Daytime Population:

42,920

Population with Degrees:

78%

Median Age:

46

Median HH Income:

\$160,689

*Disclaimer: Statistics reflect a 3-mile radius around the property



Coastline:

1.7 MILES



Parks:

2



Community Centers:

2



Aquatic Centers:

1

LOMA SANTA FE
GOLF COURSE



Average Winter Temp: 62° F

Average Summer Temp: 77° F



BEACHWALK

437 S. Highway 101, Solana Beach, CA 92075

JOE ANDERSON

Senior Director
760 415 3245

joe.anderson@cushwake.com
CA Lic: 01280854

BROOKS CAMPBELL

Senior Director
760 500 7720

brooks.campbell@cushwake.com
CA Lic.: 01880493

©2025 Cushman & Wakefield. All rights reserved. The information contained in this communication is strictly confidential. This information has been obtained from sources believed to be reliable but has not been verified. NO WARRANTY OR REPRESENTATION, EXPRESS OR IMPLIED, IS MADE AS TO THE CONDITION OF THE PROPERTY (OR PROPERTIES) REFERENCED HEREIN OR AS TO THE ACCURACY OR COMPLETENESS OF THE INFORMATION CONTAINED HEREIN, AND SAME IS SUBMITTED SUBJECT TO ERRORS, OMISSIONS, CHANGE OF PRICE, RENTAL OR OTHER CONDITIONS, WITHDRAWAL WITHOUT NOTICE, AND TO ANY SPECIAL LISTING CONDITIONS IMPOSED BY THE PROPERTY OWNER(S). ANY PROJECTIONS, OPINIONS OR ESTIMATES ARE SUBJECT TO UNCERTAINTY AND DO NOT SIGNIFY CURRENT OR FUTURE PROPERTY PERFORMANCE. COE-PM-West-02.20.2025

